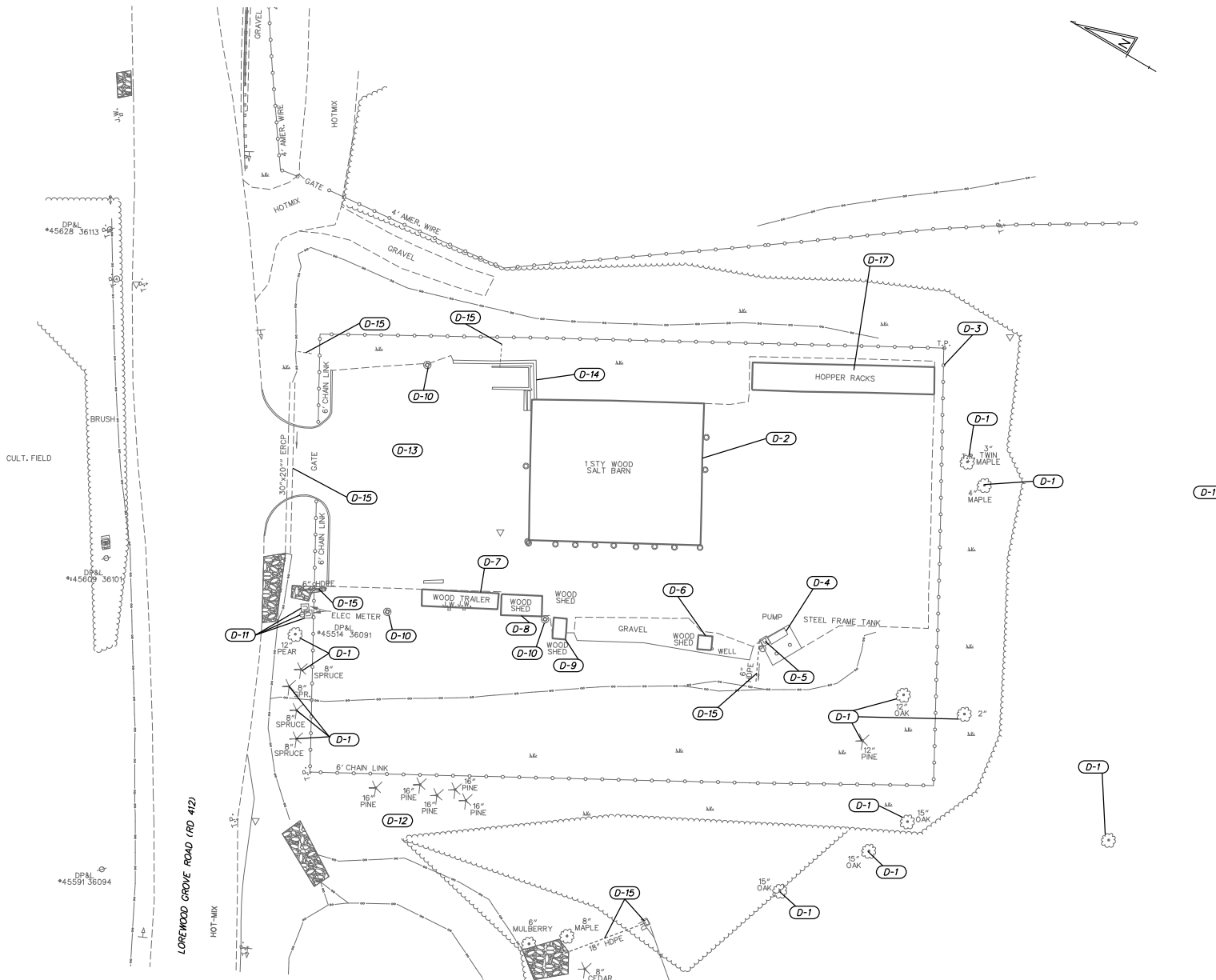
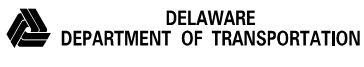


PLOTTED BY: BBOUGHERTY DATE: 4/18/2017
 FILE LOCATION: Q:\INR\120995-02\157-GEORGES_MAINTENANCE_CADD\SITE_EXISTING_CONDITIONS.DWG [SHEET: E-CADD]

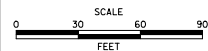


- DEMOLITION NOTES**
- D-1 CLEAR AND GRUB LIMITS OF LOC
 - D-2 1 SY EXISTING SALT BARN TO BE REMOVED (W/ ALL FEATURES)
 - D-3 REMOVE EXISTING CHAIN LINK FENCE (SEE CP FOR DETAILS)
 - D-4 REMOVE EXISTING CONCRETE PAD & STEEL FRAME TANK
 - D-5 REMOVE EXISTING FUEL PUMP
 - D-6 REMOVE/ABANDON EXISTING WELL AND STRUCTURE
 - D-7 REMOVE EXISTING WOOD TRAILER
 - D-8 REMOVE EXISTING WOOD SHED
 - D-9 REMOVE EXISTING WOOD SHED
 - D-10 REMOVE EXISTING LIGHT POLE
 - D-11 REMOVE EXISTING UTILITY POLE
 - D-12 REMOVE EXISTING CONCRETE BLOCK
 - D-13 REMOVE EXISTING PAVEMENT/GRAVEL
 - D-14 REMOVE EXISTING SALT LOADING AREAS
 - D-15 REMOVE EXISTING DRAINAGE SYSTEM
 - D-16 RELOCATE UTILITIES (LOCATION TBD)
 - D-17 HOPPER RACKS TO REMAIN, DELINEATE AREA WITH CONSTRUCTION SAFETY FENCE (ITEM 727014)

S-C-1



ADDENDUMS / REVISIONS



ST. GEORGES MAINTENANCE YARD IMPROVEMENTS

CONTRACT	BRIDGE NO.	N/A
T201680104	DESIGNED BY:	MM
COUNTY	CHECKED BY:	BH
NEW CASTLE		

EXISTING CONDITIONS & DEMOLITION PLAN

SHEET NO.	4
TOTAL SHTS.	118