

# Newark Regional Transportation Center

Newark City Council  
March 27, 2017



# Newark Regional Transportation Center

## Project History

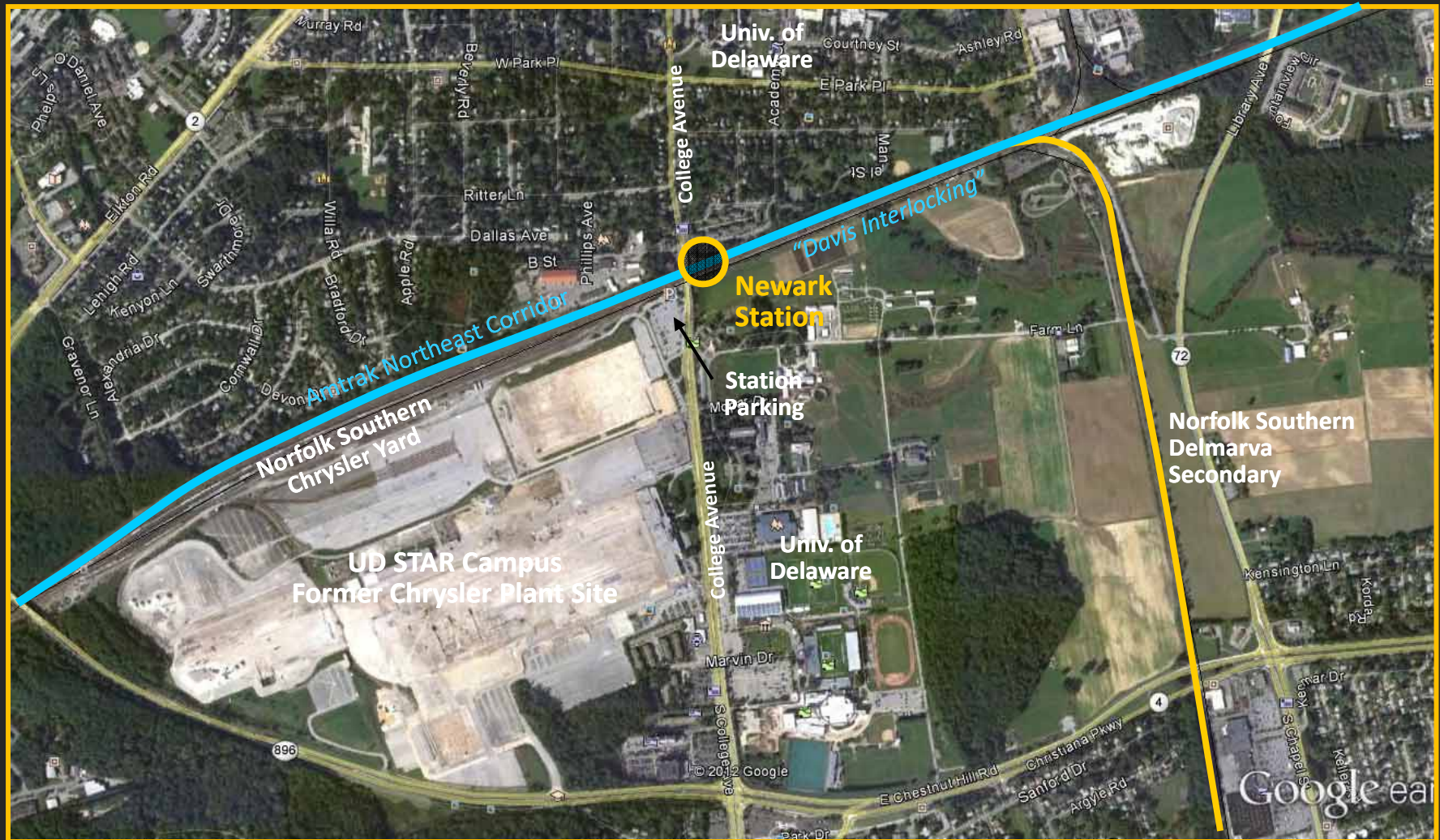
- Wilmington to Newark Commuter Rail Improvements, 2004
- Feasibility Study (Phase I) completed in July 2010
- TIGER II Planning Grant awarded in December 2010
- NRTC Study (Phase II) completed in March 2014
- TIGER IV Grant for PE/construction awarded in June 2012





# Newark Regional Transportation Center

## Station Location



# Newark Regional Transportation Center

## Project Purpose

- Accommodate additional SEPTA service
- Improve commuter safety and comfort
  - High-level platform will make boarding and alighting safer and more convenient for all trains
  - Station will meet ADA standards
- Accommodate future MARC service when/if that occurs
- Integrate station into UD's STAR Campus

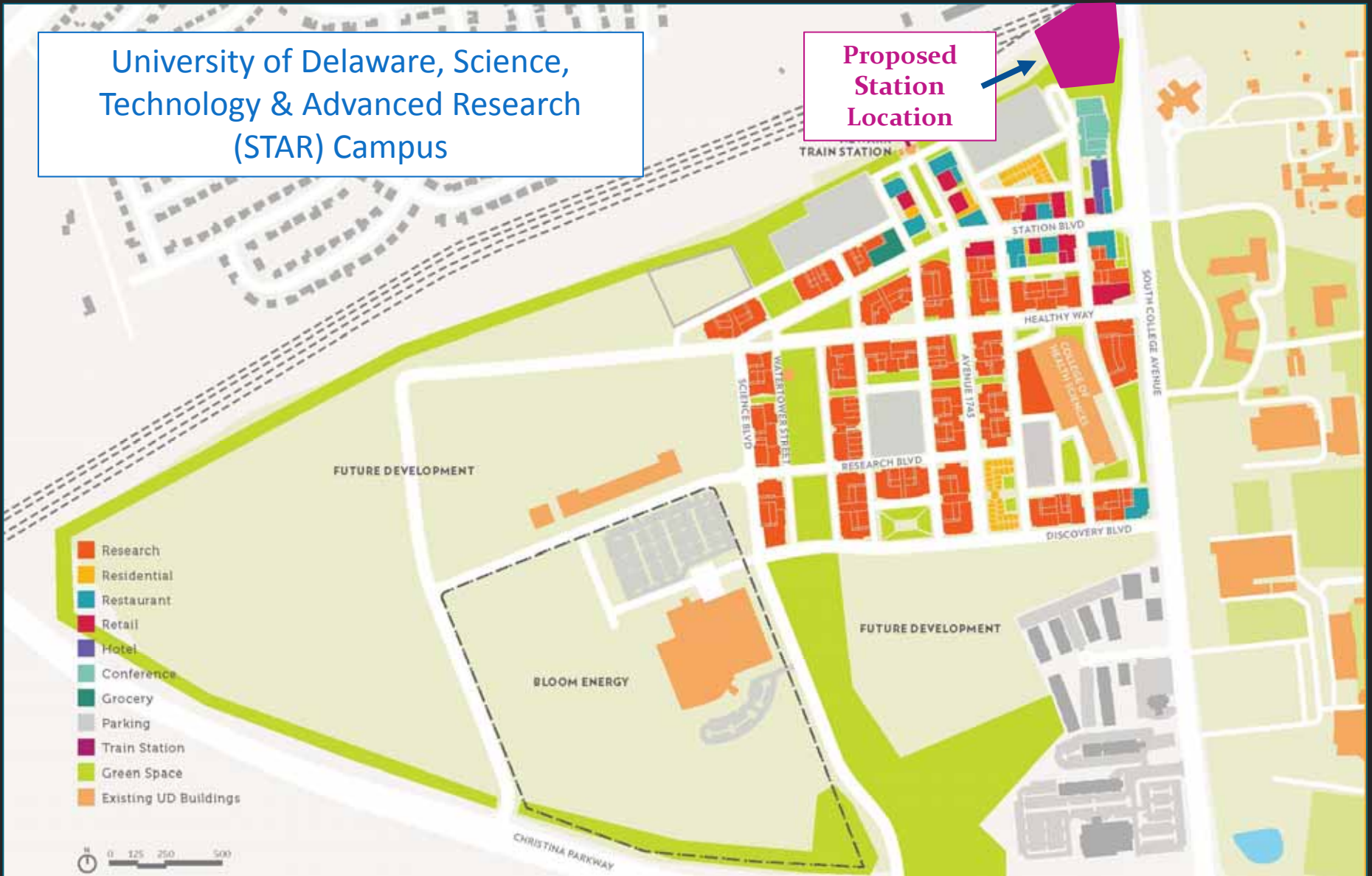




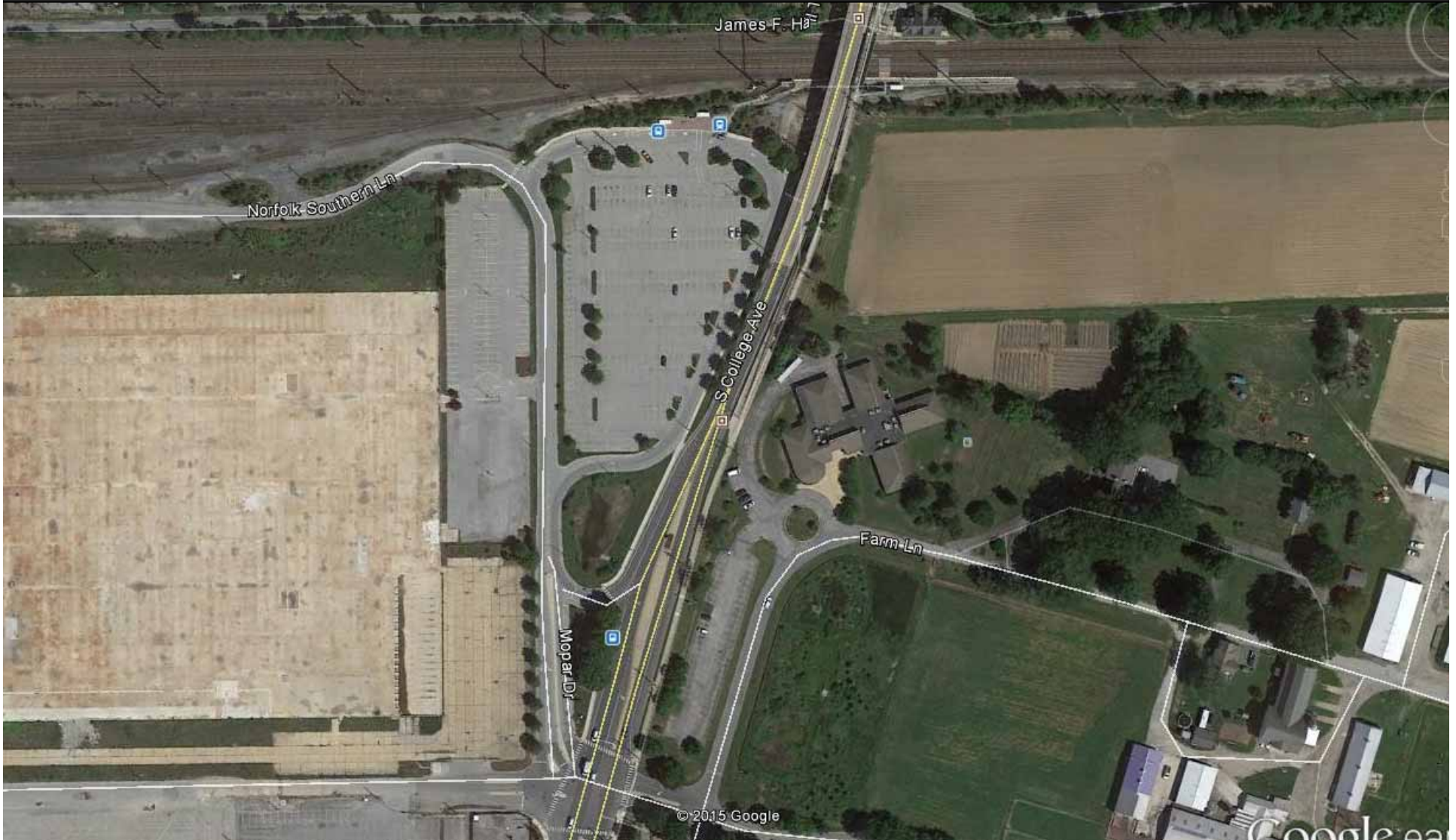
# Newark Regional Transportation Center

University of Delaware, Science, Technology & Advanced Research (STAR) Campus

Proposed Station Location



# Newark Regional Transportation Center Existing Station Configuration:





# Proposed Station Configuration





# Proposed Station Design





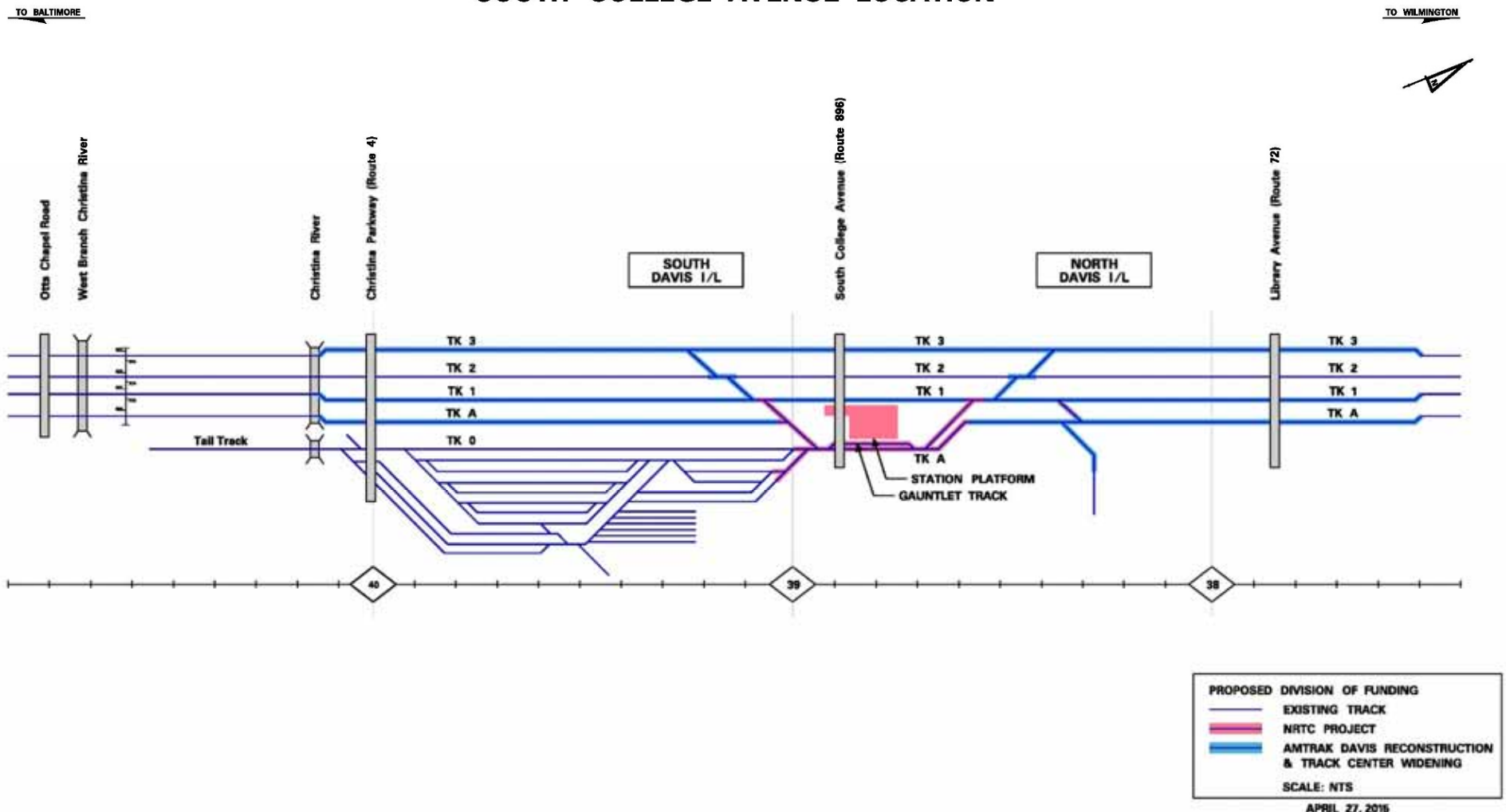
# Proposed Station Design



# Newark Regional Transportation Center

## Recommended Track Approach:

NEWARK REGIONAL TRANSPORTATION CENTER (NRTC)  
SOUTH COLLEGE AVENUE LOCATION





# Newark Regional Transportation Center

## Key Milestones for TIGER IV Construction Grant

Three construction contracts:

- Site access & parking – Late Spring 2017 (existing platform will remain in service)
- Station building – Late 2017 (existing platform will remain in service)
- Platform, pedestrian bridge and track work – TBD, (dependent on Amtrak work & scheduling)



Station Waiting Room





**For more information on this project, visit:**

**<http://www.wilmapco.org/newarktrain/>**

**Thank You!**

**Mark Tudor**

**Assistant Director, North Project Development  
DelDOT**

**[mark.tudor@state.de.us](mailto:mark.tudor@state.de.us)**

**Dave Gula**

**Principal Planner, WILMAPCO  
[dgula@wilmapco.org](mailto:dgula@wilmapco.org)**