

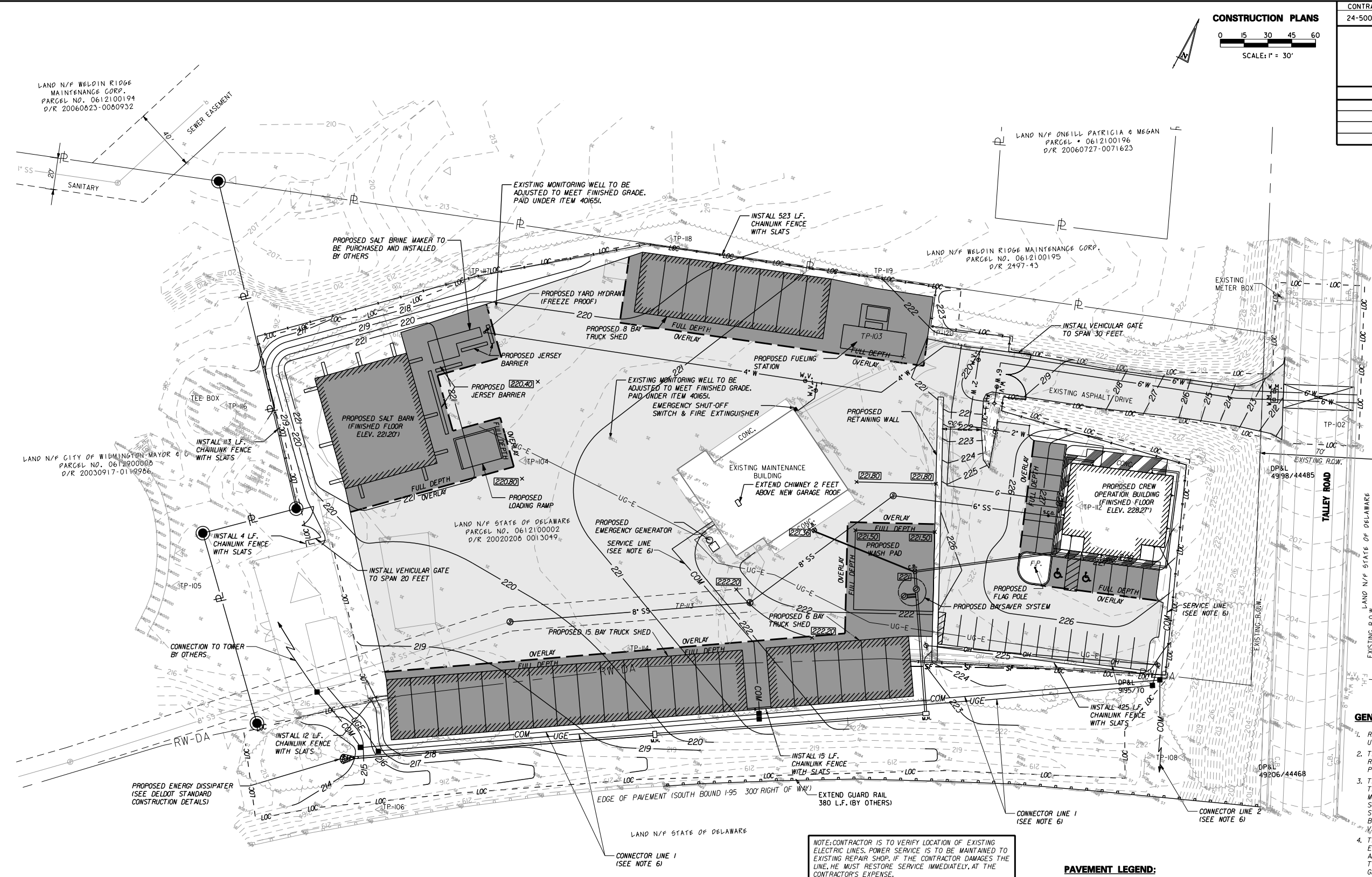
CONTRACT	COUNTY	F.A.P. NO.	SHEET NO.	TOTAL SHTS.
24-500-06	NEW CASTLE		8	97

TALLEY MAINTENANCE YARD IMPROVEMENTS

REVISIONS

CONTROL POINT DATA

ID	NORTHING	EASTING	ELEV.
TP-102	646848.2205	624963.0222	134.89
TP-103	646754.6600	624683.4017	144.26
TP-104	646580.5647	624518.2171	143.90
TP-105	646408.5152	624362.7361	140.68
TP-106	646344.1409	624541.9813	141.13
TP-108	646611.5486	624972.0554	145.42
TP-112	646721.0799	624840.6663	150.41
TP-113	646553.9511	624654.8059	145.34
TP-114	646506.6530	624631.4834	144.58
TP-116	646522.4943	624335.7267	145.86
TP-117	646668.8383	624431.2675	140.50
TP-118	646746.9068	624533.4069	142.82
TP-119	646787.7935	624662.2715	145.36
TP-120	646778.1977	624710.6229	146.15



- #### GENERAL NOTES:
- REFER TO UTILITY STAKE-OUT PLAN SHEETS FOR UTILITY SCHEDULES.
 - THE FIRE EXTINGUISHER SHALL HAVE A MINIMUM RATING OF 80 BC AND INSTALLED IN A WEATHER PROOF BOX.
 - THE CONTRACTOR SHALL DELIVER ALL MILLED MATERIAL TO THE DELAWARE DEPARTMENT OF TRANSPORTATION'S TALLEY MAINTENANCE YARD (ADJACENT PARCEL TO PROJECT SITE) ON SOUTH SIDE OF 1951. THE MATERIAL SHALL BE NEATLY STOCKPILED AT THE YARD. ALL COSTS FOR THIS WORK SHALL BE INCIDENTAL TO ITEM 760003 - PAVEMENT MILLING, HOT-MIX, VARIABLE DEPTH.
 - THE CONTRACTOR SHALL MILL A MINIMUM OF 2 INCHES OF EXISTING ASPHALT IN THE AREAS DESIGNATED ON THIS PLAN, AND SHALL OVERLAY A MINIMUM OF 125 INCHES OF SUPERPAVE, TYPE C, HOT-MIX, 160 GYRATIONS, PG70-22 (ITEM 40165) TO BRING GRADE AS SHOWN ON THESE PLANS. ALL OVERLAY SHALL BE PERFORMED IN ACCORDANCE WITH DELDOT'S STANDARDS FOR MINIMUM AND MAXIMUM LIFT THICKNESSES FOR SUPERPAVE HOT-MIX (SEE TABLE THIS SHEET). IN ADDITION, ALL TRENCHES MADE FOR INSTALLATION OF UTILITIES, AS WELL AS AREAS OF PROPOSED PAVEMENT OUTSIDE EXISTING PAVEMENT SHALL RECEIVE FULL DEPTH PAVEMENT SECTIONS AS DETAILED IN THE SITE DETAILS.
 - ALL EXISTING PAVEMENT OUTSIDE OF THE PROPOSED PAVEMENT AREA SHALL BE REMOVED TO A 6" DEPTH AS NECESSARY TO TOPSOIL, SEED, AND MULCH THE DISTURBED AREA.
 - REFER TO TELEPHONE AND DATA COMMUNICATION NOTES, SHEET NO.6 - PROJECT NOTES.

NOTE: CONTRACTOR IS TO VERIFY LOCATION OF EXISTING ELECTRIC LINES. POWER SERVICE IS TO BE MAINTAINED TO EXISTING REPAIR SHOP. IF THE CONTRACTOR DAMAGES THE LINE, HE MUST RESTORE SERVICE IMMEDIATELY, AT THE CONTRACTOR'S EXPENSE.

STANDARD LIFT THICKNESSES FOR HOT-MIX		
HOT-MIX	MINIMUM LIFT (INCHES)	MAXIMUM LIFT (INCHES)
TYPE C	1.25	2.00
TYPE B	2.25	3.00
BCBC	3.00	6.00

PAVEMENT LEGEND:

- FULL DEPTH PAVEMENT SECTION**
 - LIMITS OF MILL & OVERLAY AREA (SEE NOTE 4)
 - VARIABLE DEPTH, SUPERPAVE TYPE C HOT-MIX, 160 GYRATIONS, PG 70-22
 - VARIABLE DEPTH, SUPERPAVE TYPE B HOT-MIX, 160 GYRATIONS, PG 70-22
- NOTE: REFER TO PAVEMENT SECTION DETAILS AS SHOWN ON SHEET 21 - SITE DETAILS FOR FULL DEPTH PAVEMENT SECTION.

PREL. TRACING DESIGN CHKD.