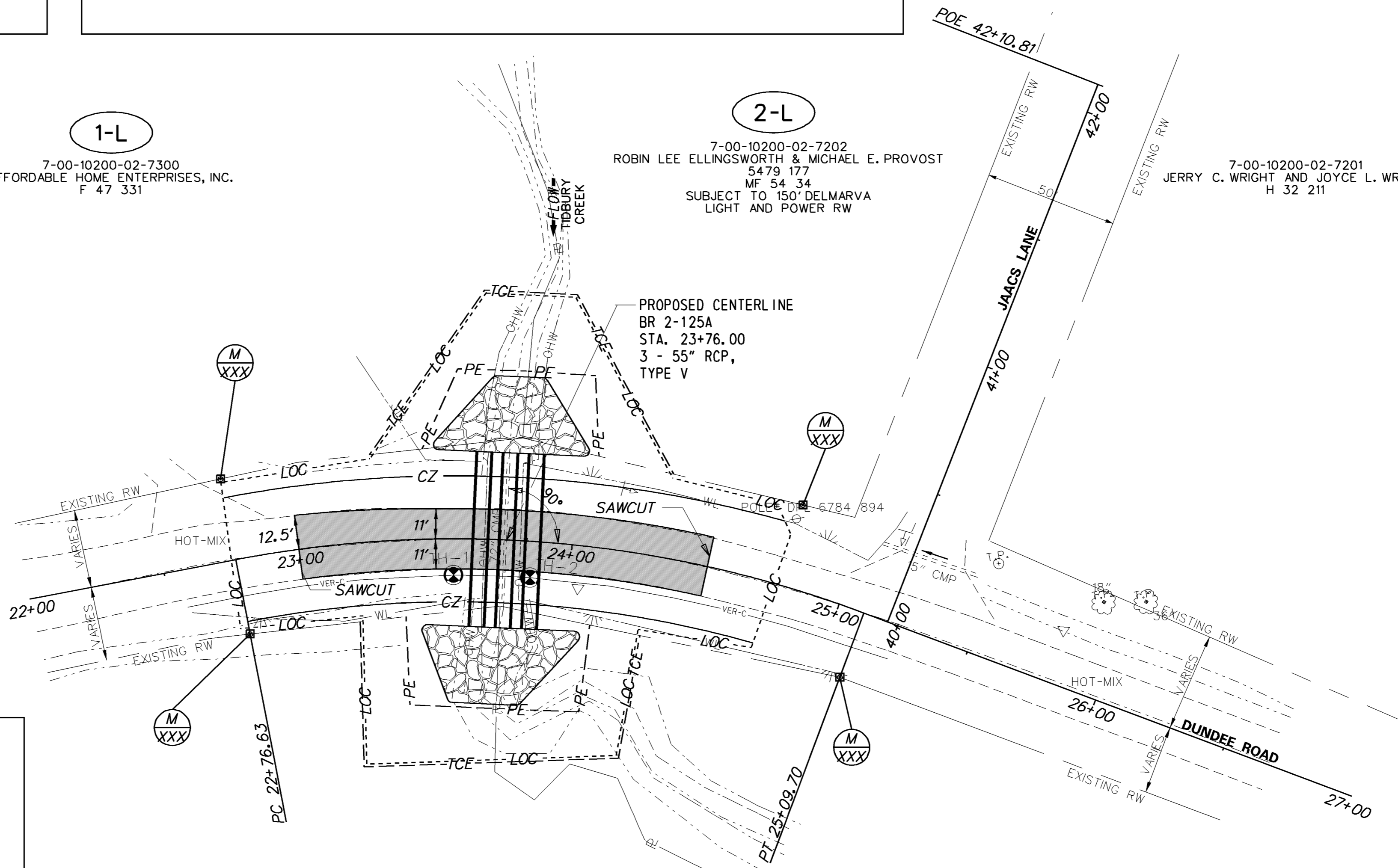


1-L
7-00-10200-02-7300
AFFORDABLE HOME ENTERPRISES, INC.
F 47 331

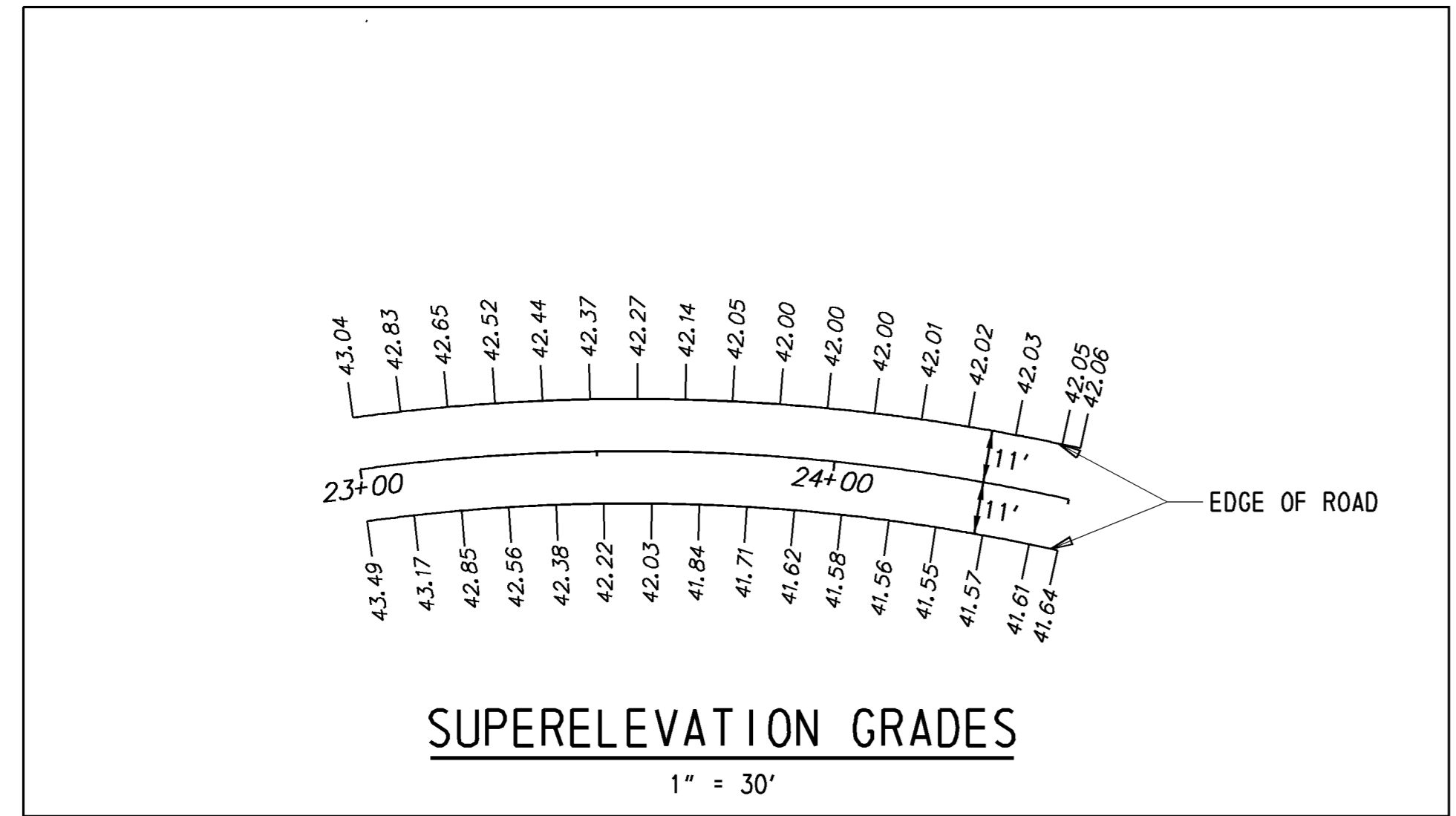
2-L
7-00-10200-02-7202
ROBIN LEE ELLINGSWORTH & MICHAEL E. PROVOST
5479 177
MF 54 34
SUBJECT TO 150' DELMARVA
LIGHT AND POWER RW

7-00-10200-02-7201
JERRY C. WRIGHT AND JOYCE L. WRIGHT
H 32 211

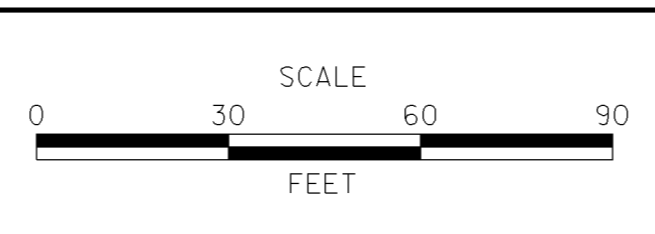


1-R
7-00-10200-02-4901
MARY ANN FRANCES BRYANT
3248 226

2-R
7-00-11008-01-1300
BARBARA TOWERS
WP005 0016
F 21 371



ADDENDUMS / REVISIONS



CONTRACT T201207504	BRIDGE NO. 2-125A
COUNTY KENT	DESIGNED BY: S.M.
	CHECKED BY: C.A.S.

CONSTRUCTION PLAN	SHEET NO. 6
	TOTAL SHTS. 28

Y:\KENT\Bridges\T201207504