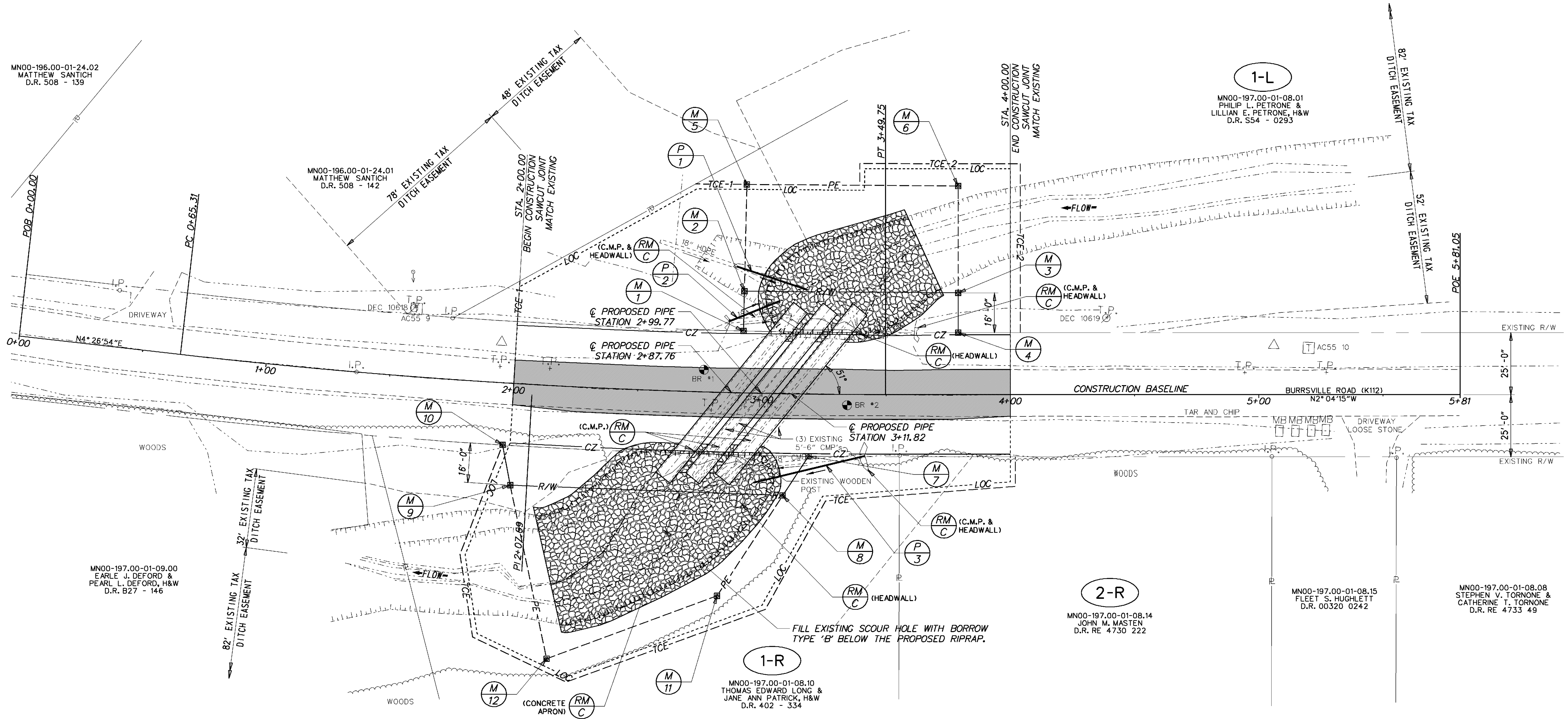
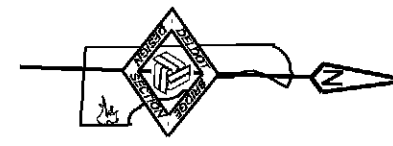


RIGHT-OF-WAY MONUMENT SCHEDULE					
NO.	TYPE	STATION	OFFSET	NORTHING	EASTING
1	CAPPED REBAR	2+92.00	-25.00	307172.2014	576987.4361
2	CAPPED REBAR	2+92.00	-41.00	307171.9928	576971.4375
3	CAPPED REBAR	3+79.00	-41.00	307258.0081	576968.9839
4	CAPPED REBAR	3+79.00	-25.00	307258.5862	576984.9735
5	CAPPED REBAR	2+92.00	-84.00	307171.4321	576928.4412
6	CAPPED REBAR	3+79.00	-84.00	307256.4543	576926.0120
7	CAPPED REBAR	3+19.00	25.00	307200.1204	577036.9290
8	CAPPED REBAR	3+09.00	41.00	307190.3404	577053.1434
9	CAPPED REBAR	2+01.00	41.00	307080.5754	577052.9573
10	CAPPED REBAR	1+97.00	25.00	307076.9149	577036.8602
11	CAPPED REBAR	2+84.00	82.00	307165.3386	577094.5223
12	CAPPED REBAR	2+19.00	110.00	307097.7492	577122.3056

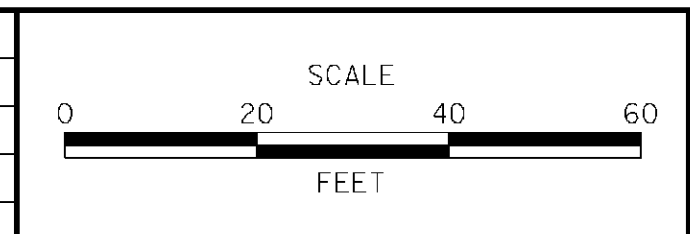
DRAINAGE PIPE SCHEDULE						
NO.	SIZE / TYPE	CLASS	LENGTH	SLOPE	INT. EL.	DIS. EL.
1	18" HDPE	S	30.00	1.133%	32.18	31.84
2	18" HDPE	S	22.00	4.545%	35.00	34.00
3	18" HDPE	S	46.00	2.065%	36.20	35.25

NOTE: PIPE 1 WILL TIE INTO THE EXISTING 18" HDPE DRAINAGE PIPE UPSTREAM ON THE SOUTH SIDE.



Y:\KENT\112.BRIDGE\T201107208\PLANS\CP01.DGN

ADDENDUMS / REVISIONS



CONTRACT T201107208	BRIDGE NO. 2-112B
COUNTY KENT	DESIGNED BY: NED
	CHECKED BY: JKM

SHEET NO. 5
TOTAL SHTS. 15