

W:\1957-011\CA005\Display\Virtual Workshop\CP04_5273.dgn
 2/8/2017 4:59:05 PM



ADDENDUMS / REVISIONS	

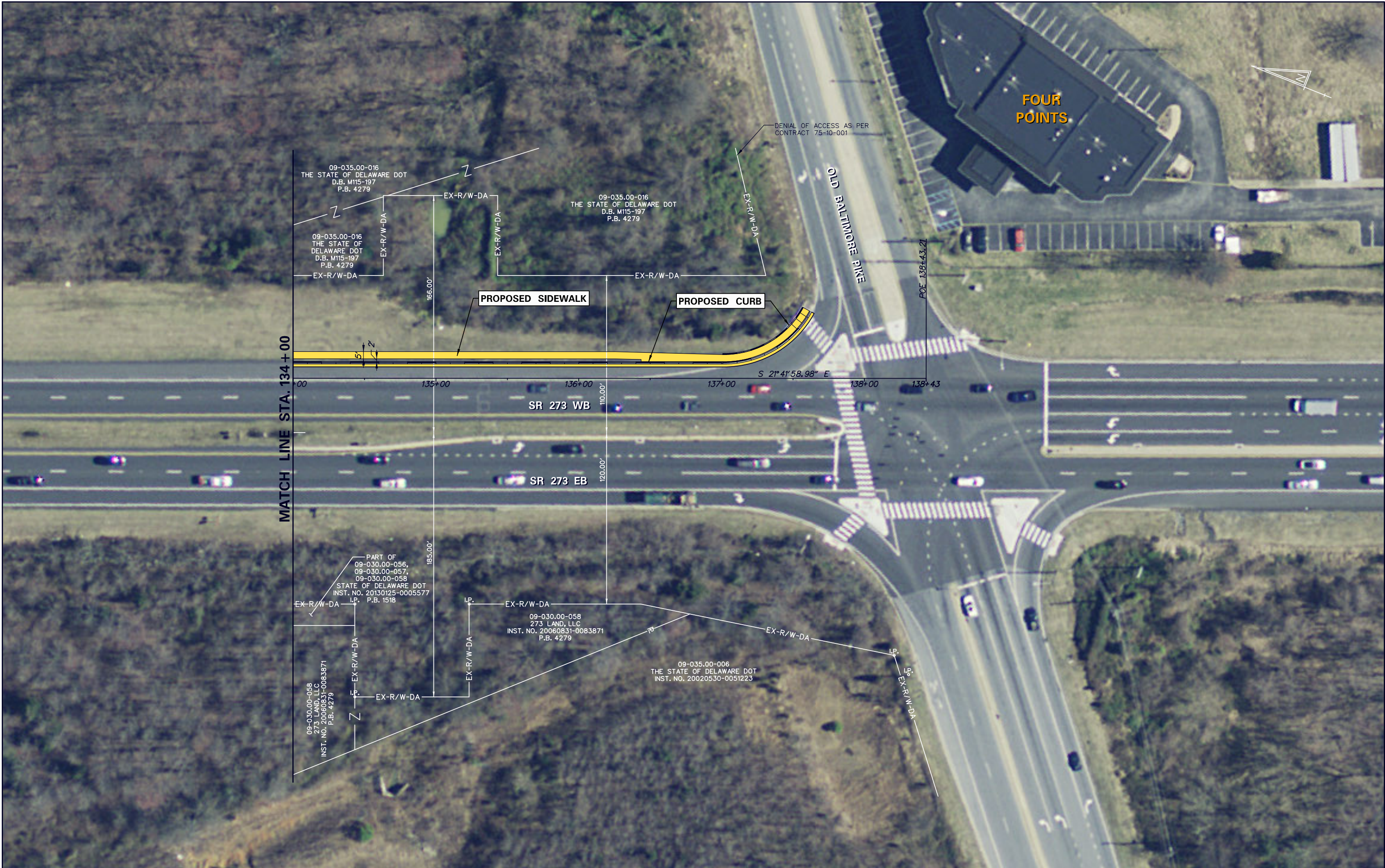


**SR 273 SIDEWALK,
 OLD BALTIMORE PIKE
 TO EAGLE RUN ROAD**

CONTRACT	BRIDGE NO.	N/A
T201500701	DESIGNED BY:	S.J.B.
COUNTY	CHECKED BY:	T.A.O.
NEW CASTLE		

CONSTRUCTION PLAN

SHEET NO.	11
TOTAL SHTS.	34



FOUR POINTS

MATCH LINE STA. 134 + 00

09-035.00-016
THE STATE OF DELAWARE DOT
D.B. M115-197
P.B. 4279

09-035.00-016
THE STATE OF DELAWARE DOT
D.B. M115-197
P.B. 4279

09-035.00-016
THE STATE OF DELAWARE DOT
D.B. M115-197
P.B. 4279

PART OF
09-030.00-056,
09-030.00-057,
09-030.00-058
STATE OF DELAWARE DOT
INST. NO. 20130125-0005577
P.B. 1518

09-030.00-058
273 LAND, LLC
INST. NO. 20060831-0083871
P.B. 4279

09-030.00-058
273 LAND, LLC
INST. NO. 20060831-0083871
P.B. 4279

09-035.00-006
THE STATE OF DELAWARE DOT
INST. NO. 20020530-0051223

DENIAL OF ACCESS AS PER
CONTRACT 75-10-001

PROPOSED SIDEWALK

PROPOSED CURB

SR 273 WB

SR 273 EB

OLD BALTIMORE PIKE

POE 138+43.21

S 21°41'58.98" E

5% EX-R/W-DA