

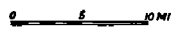
PLANNING SECTION

ANNUAL REPORT
OF THE
STATE HIGHWAY
DEPARTMENT
OF THE
STATE OF DELAWARE

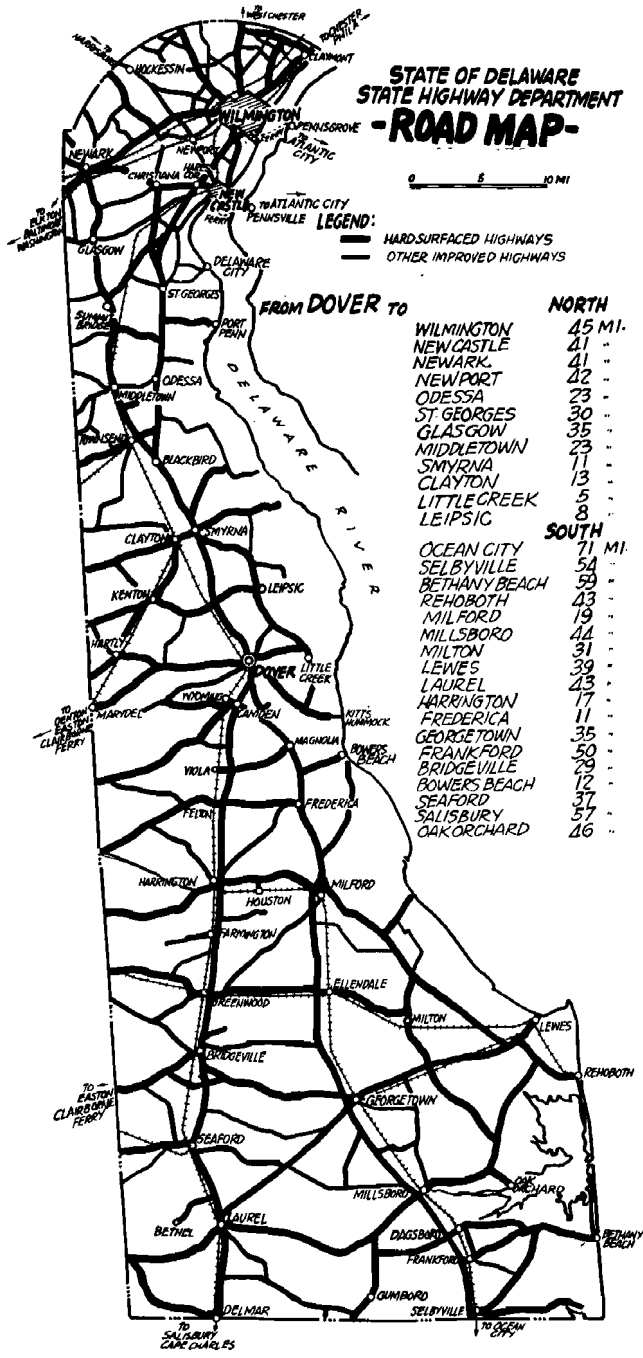


1935

STATE OF DELAWARE STATE HIGHWAY DEPARTMENT -ROAD MAP-



LEGEND:
 ——— HARD SURFACED HIGHWAYS
 - - - - OTHER IMPROVED HIGHWAYS



FROM DOVER TO

NORTH

WILMINGTON	45 MI.
NEW CASTLE	41 "
NEWARK	41 "
NEWPORT	42 "
ODESSA	23 "
ST GEORGES	30 "
GLASGOW	35 "
MIDDLETOWN	23 "
SMYRNA	11 "
CLAYTON	13 "
LITTLE CREEK	5 "
LEIPSIC	8 "

SOUTH

OCEAN CITY	71 MI.
SELBYVILLE	54 "
BETHANY BEACH	59 "
REHOBOTH	43 "
MILFORD	19 "
MILLSBORD	44 "
MILTON	31 "
LEWES	39 "
LAUREL	43 "
HARRINGTON	17 "
FREDERICA	11 "
GEORGETOWN	35 "
FRANKFORD	50 "
BRIDGEVILLE	29 "
BOWERS BEACH	12 "
SEAFORD	37 "
SALISBURY	57 "
OAK ORCHARD	46 "

TO EASTON
CLAREBORNE
FERRY

TO SALISBURY
CAPE CHARLES

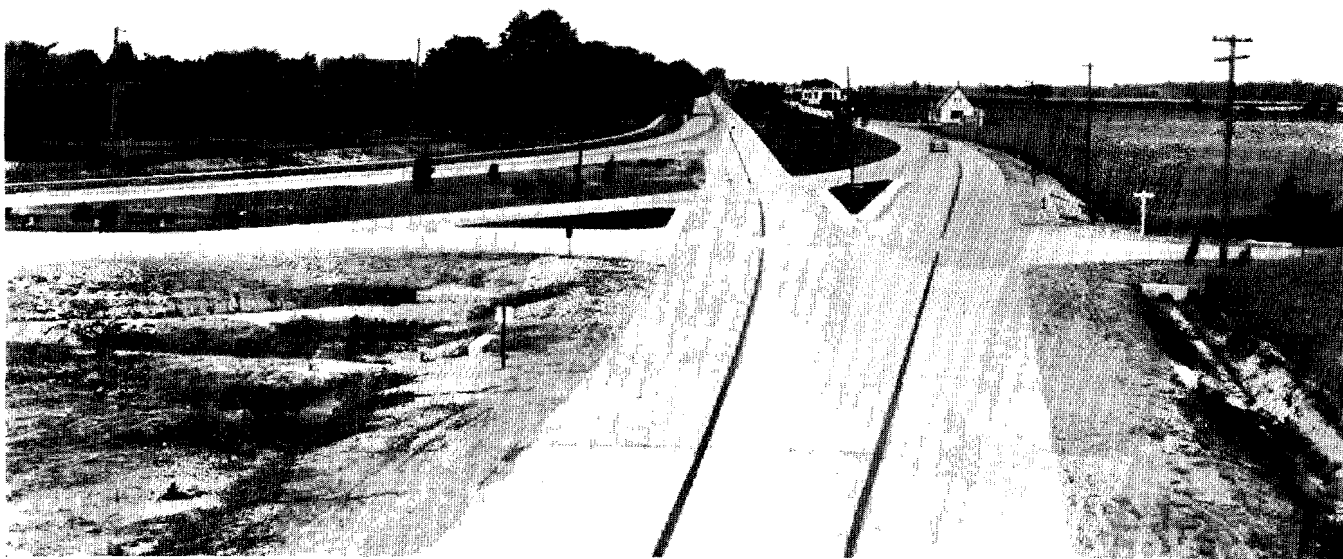
TO OCEAN
SPRING

BETHANY
BEACH

ANNUAL REPORT
OF THE
STATE HIGHWAY DEPARTMENT
OF THE
STATE OF DELAWARE
1935



F. V. DU PONT, *Chairman*
C. DOUGLASS BUCK CHARLES W. CULLEN
NEWTON L. GRUBB J. HENRY HAZEL
W. W. MACK, *Chief Engineer*
J. H. COSBY, *Secretary*



Kent County—Intersection of Routes 13 and 113 north of Dover. Looking north along dual highway