

ANNUAL REPORT
OF THE
STATE HIGHWAY DEPARTMENT
OF THE
STATE OF DELAWARE



1933

STATE OF DELAWARE
STATE HIGHWAY DEPARTMENT

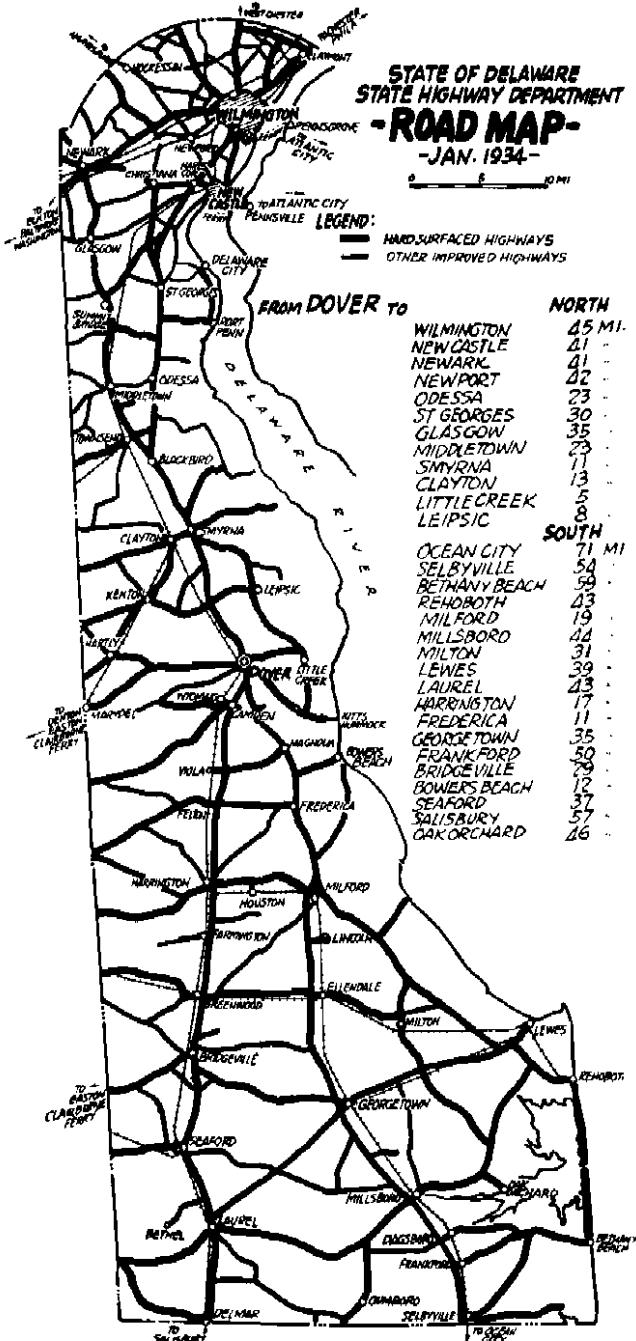
-ROAD MAP-

-JAN. 1934-



LEGEND:

- HARD SURFACED HIGHWAYS
- - -** OTHER IMPROVED HIGHWAYS



FROM DOVER TO

NORTH

WILMINGTON	45 MI.
NEW CASTLE	41 -
NEWARK	41 -
NEWPORT	42 -
ODESSA	23 -
ST GEORGES	30 -
GLASGOW	35 -
MIDDLETOWN	23 -
SMYRNA	11 -
CLAYTON	13 -
LITTLE CREEK	5 -
LEIPSIC	8 -

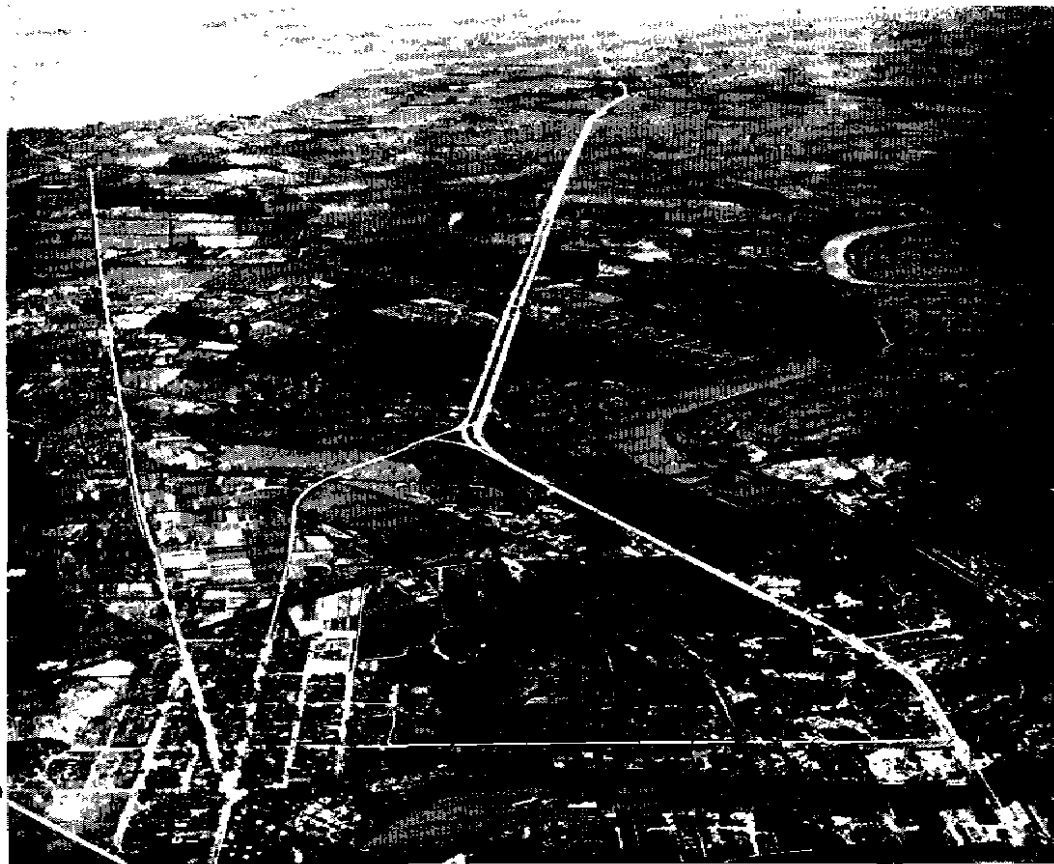
SOUTH

OCEAN CITY	71 MI.
SELBYVILLE	54 -
BETHANY BEACH	59 -
REHOBOTH	43 -
MILFORD	19 -
MILLSBORO	44 -
MILTON	31 -
LEWES	39 -
LAUREL	43 -
HARRINGTON	17 -
FREDERICA	11 -
GEORGE TOWN	35 -
FRANKFORD	30 -
BRIDGEVILLE	29 -
BOWERS BEACH	12 -
SEAFORD	37 -
SALISBURY	37 -
GAK ORCHARD	26 -

ANNUAL REPORT
OF THE
STATE HIGHWAY DEPARTMENT
OF THE
STATE OF DELAWARE
1933



F. V. DU PONT, *Chairman*
C. DOUGLASS BUCK
NEWTON L. GRUBB
CHARLES W. CULLEN
J. HENRY HAZEL
W. W. MACK, *Chief Engineer*
ALLEN CRAIG, *Secretary*



—Photo by Dattin Aerial Surveys, Philadelphia.

U. S. Route 13, New Castle County, Looking South from Wilmington.