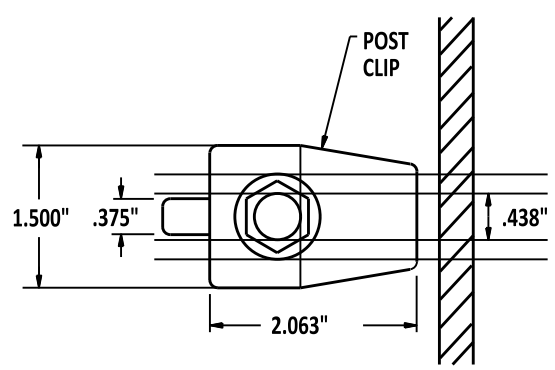
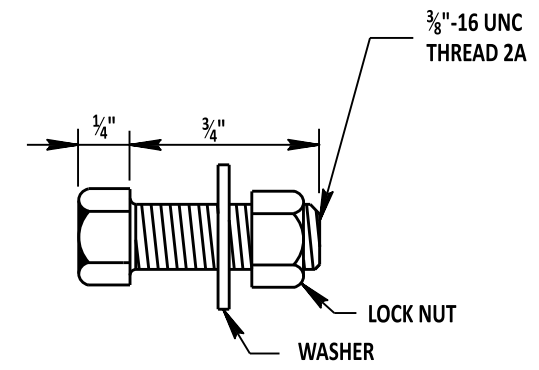


SLOTTED HOLES DRILLED  
12" O.C. END HOLES  
6" FROM ENDS OF  
PANEL. (SEE DETAIL A)

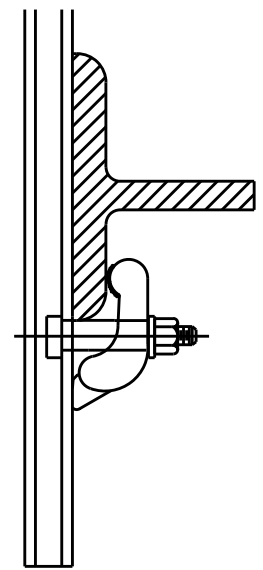
**SIGN PANEL ASSEMBLY**



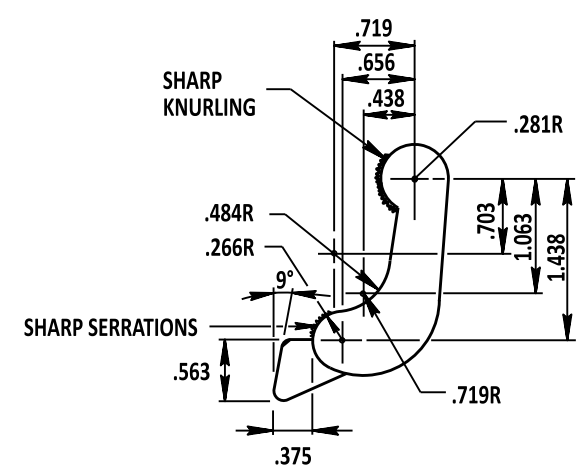
**SECTION A-A**



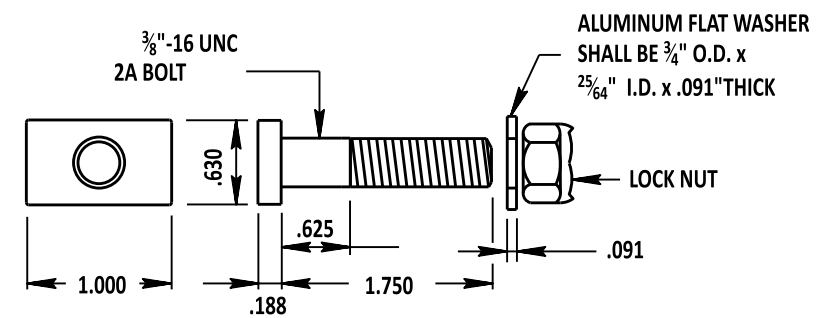
**STITCH BOLT (TYP.)**



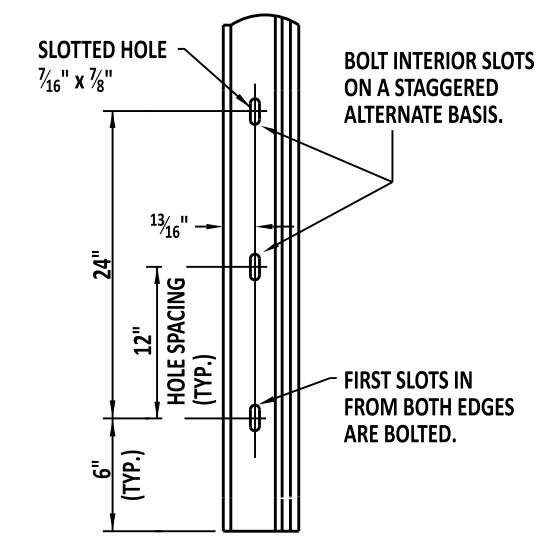
**SECTION B-B**



**POST CLIP (TYP.)**



**POST CLIP BOLT (TYP.)**



**DETAIL A**

- BOLTS B211, ALLOY 2024-T4, 6262-T9 OR 6061-T6
- FLAT WASHERS B209, ALLOY 2024-T4
- RIVETS ALLOY 5052
- NUTS B211, ALLOY 2017-T4
- POST CLIPS B108, ALLOY 356-T6



*Andrew Shott*  
ENGINEERING SUPPORT  
RECOMMENDED  
12/13/2022  
DATE

EXTRUDED ALUMINUM DETAIL  
STANDARD NO. T-27 (2022) SHT. 2 OF 2

REVIEWED *Mike Lee*  
DEPUTY DIRECTOR - DESIGN  
12/16/2022  
DATE  
APPROVED *Shrey*  
CHIEF ENGINEER  
12/21/2022  
DATE