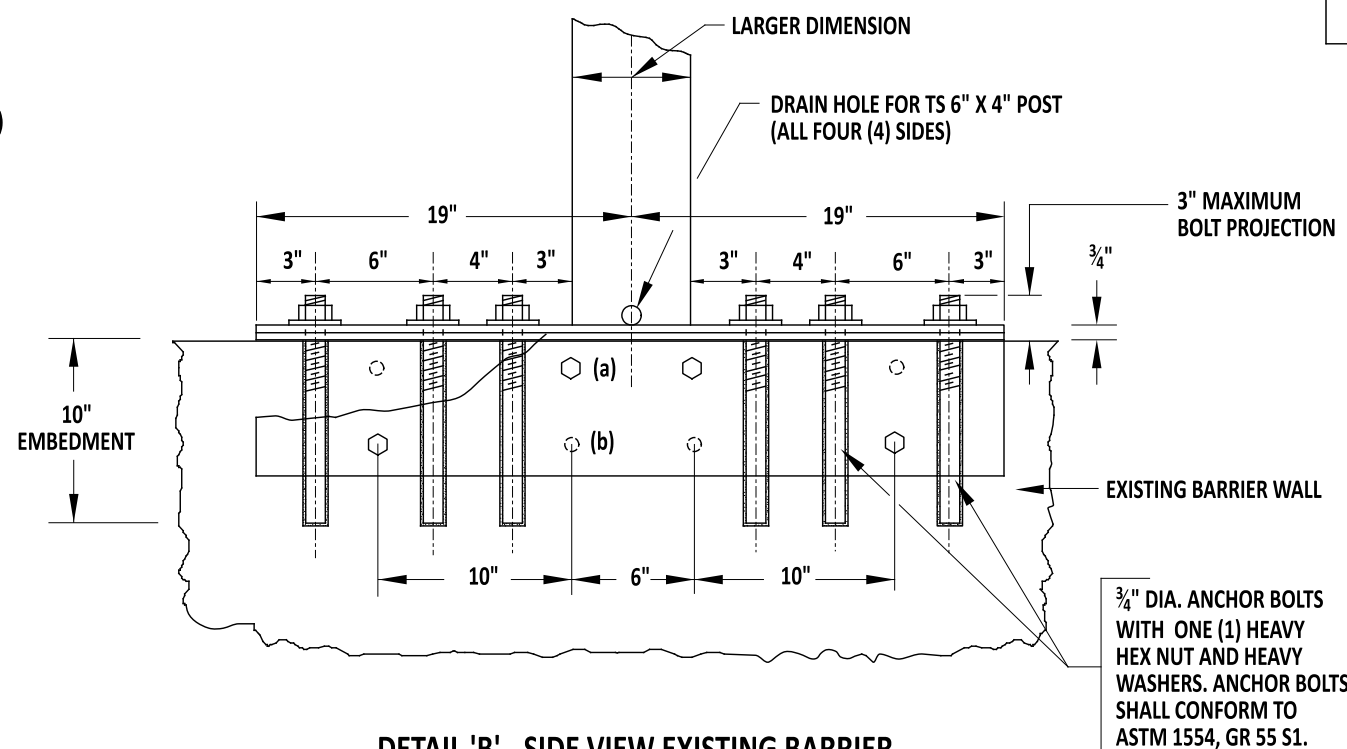
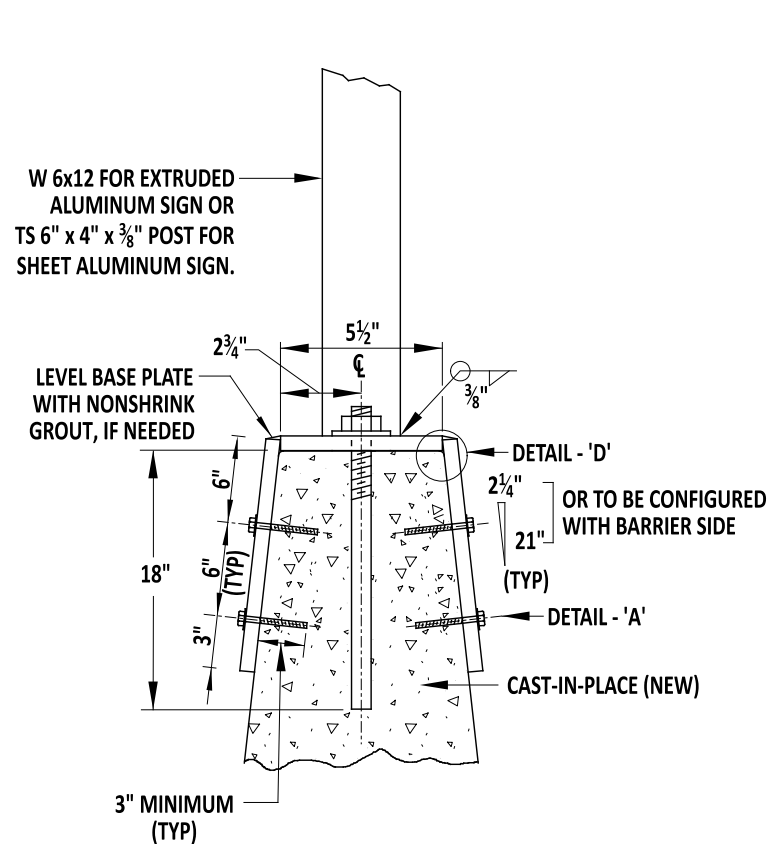


DETAIL 'A' - SIDE VIEW NEW BARRIER

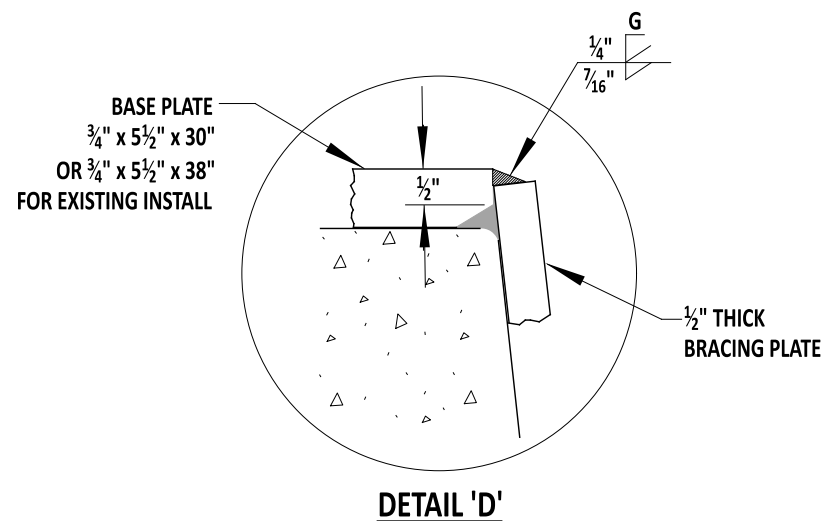
- (a): 3/8" DIA. EXPANSION BOLTS WITH FLAT WASHERS 3" MIN. EMBEDMENT (TYP.) (NEAR FACE)
- (b): 3/8" DIA. EXPANSION BOLTS WITH FLAT WASHERS 3" MIN EMBEDMENT (TYP.) (FAR FACE)



DETAIL 'B' - SIDE VIEW EXISTING BARRIER



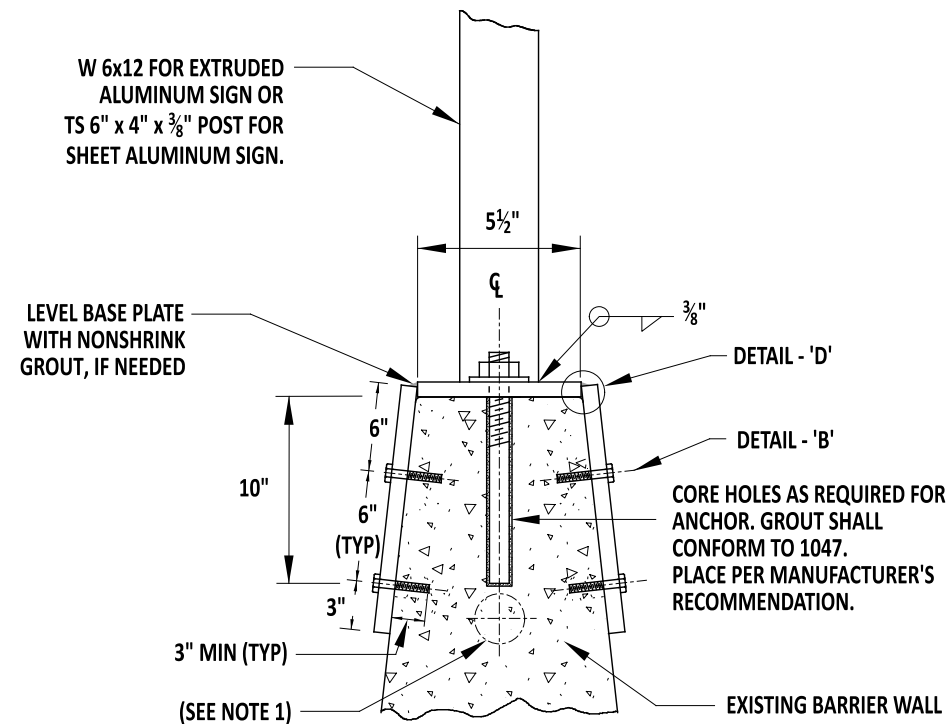
DETAIL 'A' NEW BARRIER



DETAIL 'D'

NOTES:

1. THE CONTRACTOR SHALL VERIFY ANY EXISTING CONDUIT BEFORE DRILLING HOLES. IF THE CONDUIT IS WITHIN 10" FROM THE TOP OF THE BARRIER, THE ENGINEER SHALL BE CONTACTED FOR ALTERNATE DESIGN.



DETAIL 'A' EXISTING BARRIER



Andrew Shott
ENGINEERING SUPPORT
RECOMMENDED
7/25/23
DATE

BARRIER MOUNTED SIGN
STANDARD NO. T-19 (2022)
SHT. 2 OF 2

REVIEWED
APPROVED
3 August 2023
DATE
08/10/2023
DATE

Deputy Director - Design
Chief Engineer

REVISED