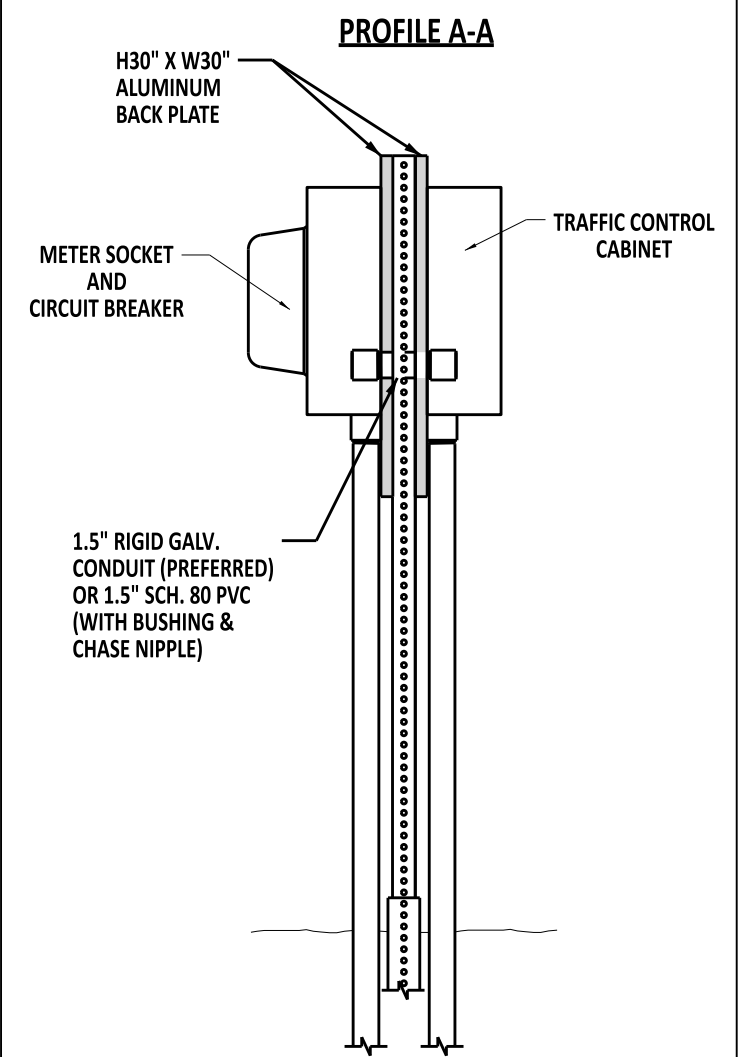
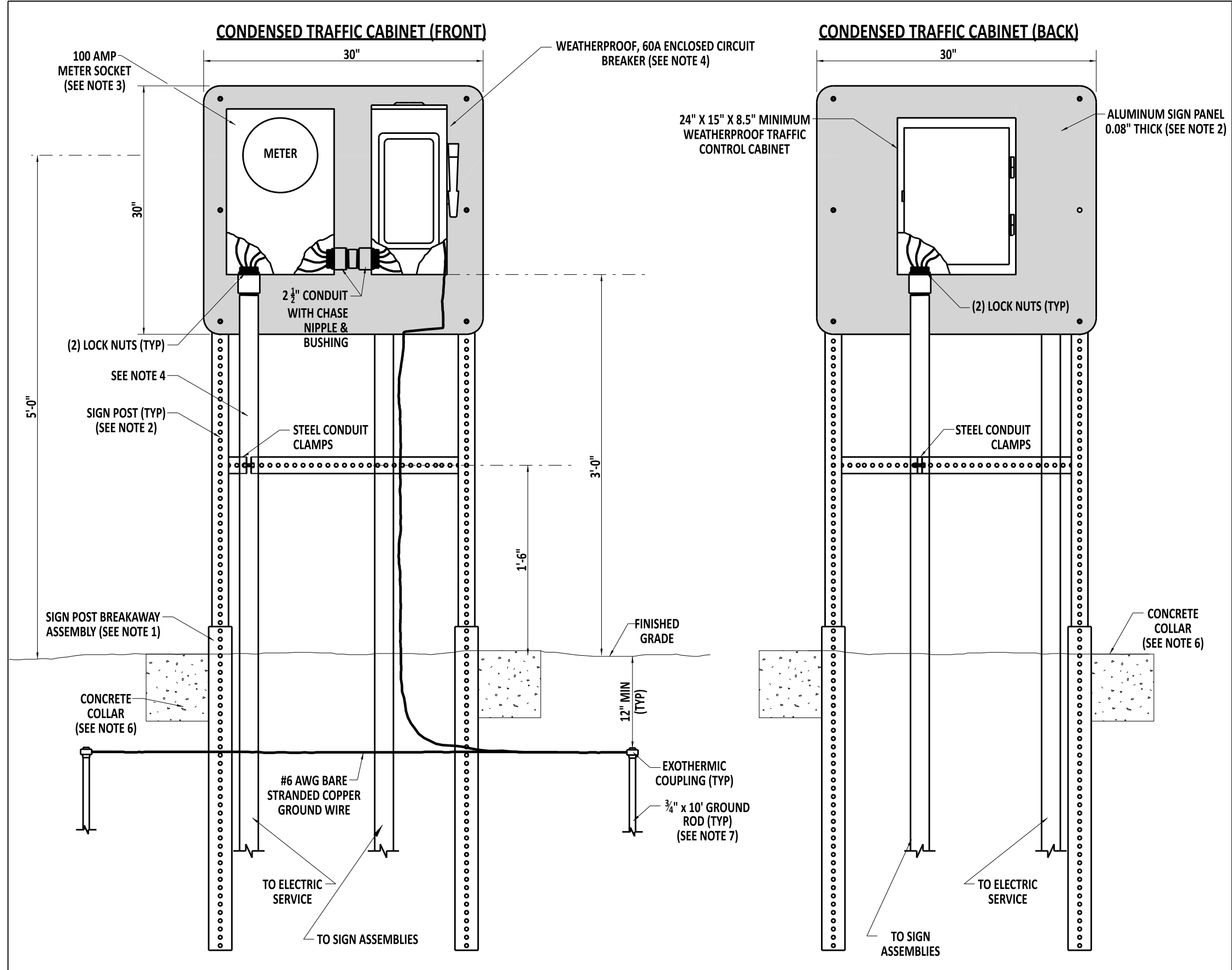


SCALE : NTS



- NOTES:**
- 1). SEE DETAIL T-15, SHEET 1, FOR SIGN POST AND BREAKAWAY ASSEMBLY DETAILS.
 - 2). ATTACH ALUMINUM PANEL TO SIGN POSTS WITH (6) $\frac{5}{16}$ " x $2\frac{1}{2}$ " LONG GRADE 5 BOLTS, FLAT WASHERS, AND NYLON LOCK NUTS, 3 ON EACH SIDE.
 - 3). MOUNT METER SOCKET TO ALUMINUM PANEL WITH (4) $\frac{5}{16}$ " x $\frac{3}{4}$ " STAINLESS STEEL BOLTS AND NYLON LOCK NUTS.
 - 4). ALL CONDUITS AND OTHER ASSOCIATED PIECES SHALL BE 2" RIGID GALVANIZED CONDUIT UNLESS SPECIFIED DIFFERENTLY ON THE PLANS OR BY LOCAL UTILITY COMPANY.
 - 5). USE OF THESE DETAILS ARE MEANT FOR THE OPERATION OF FLASHING BEACONS FOR SIGN ASSEMBLIES SUCH AS RECTANGULAR RAPID FLASHING BEACONS (RRFB) WHERE FIELD CONDITIONS DO NOT ALLOW FOR THE INSTALLATION PER T-17, SHEET 6.
 - 6). CONCRETE COLLAR SHALL CONTAIN 25 LBS OF CONCRETE AT EACH LEG JUST BELOW GRADE AS DIRECTED BY INSPECTOR.
 - 7). GROUND ROD SPREAD SHALL BE TWICE THE LENGTH OF THE GROUND ROD.



Andrew Shott
ENGINEERING SUPPORT
RECOMMENDED
12/13/2022
DATE

ELECTRICAL SERVICE PEDESTAL - SIGNAL & ITS COMPONENT INSTALLATIONS
SIGN ASSEMBLIES WITH FLASHING BEACONS - 100 AMP (CONDENSED)
STANDARD NO. T-17 (2022)
SHT. 7 OF 7

REVIEWED
APPROVED
DEPUTY DIRECTOR - DESIGN
CHIEF ENGINEER
12/16/2022
DATE
12/21/2022
DATE