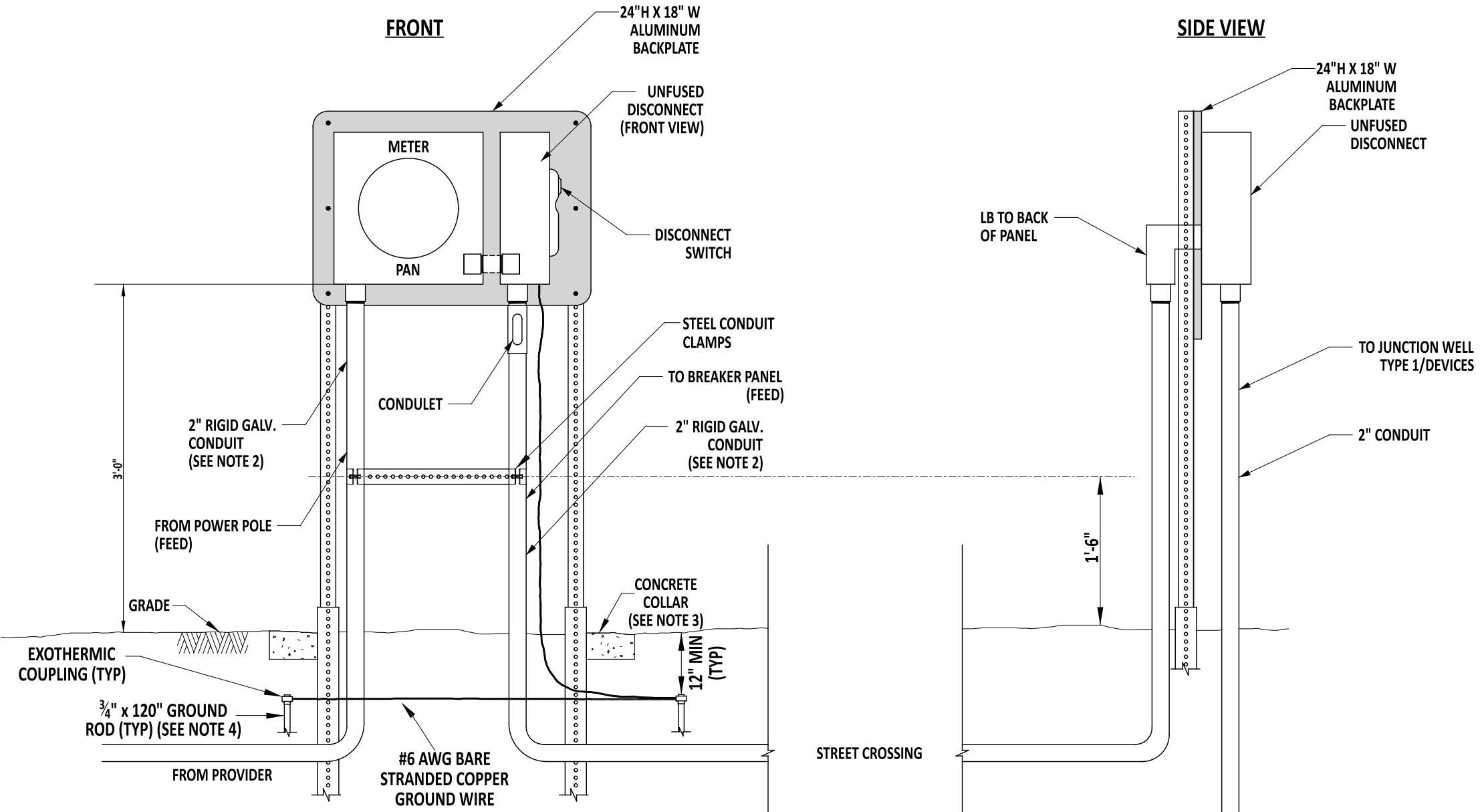


STANDARD INSTALLATION (UP TO 2 DEVICES)



- NOTES**
- 1). PEDESTAL SHALL BE USED WHEN ALL DEVICES ARE AWAY FROM POWER SOURCE.
 - 2). ALL CONDUITS AND OTHER ASSOCIATED PIECES SHALL BE 2" RIGID GALVANIZED CONDUIT UNLESS SPECIFIED DIFFERENTLY ON THE PLANS OR BY LOCAL UTILITY COMPANY. ALL CONDUITS SHALL BE INSTALLED FROM ENCLOSURE TO TYPE 1 JUNCTION WELL. JUNCTION WELL SHALL BE PLACED WITHIN 10' OF SERVICE PEDESTAL (OR PER PLAN).
 - 3). CONCRETE COLLAR SHALL CONTAIN 25 LBS OF CONCRETE AT EACH LEG JUST BELOW GRADE AS DIRECTED BY INSPECTOR.
 - 4). GROUND ROD SPREAD SHALL BE TWICE THE LENGTH OF THE GROUND ROD.



Andrew Shott
 ENGINEERING SUPPORT 7/25/23
 RECOMMENDED DATE

**ELECTRICAL SERVICE PEDESTAL -
 SIGNAL & ITS COMPONENT INSTALLATIONS - 100 AMP (UP TO 2 DEVICES)**

STANDARD NO. T-17 (2022) SHT. 3 OF 7

REVIEWED *[Signature]* 3 August 2023
 DEPUTY DIRECTOR - DESIGN DATE

APPROVED *[Signature]* 08/10/2023
 CHIEF ENGINEER DATE

REVISED