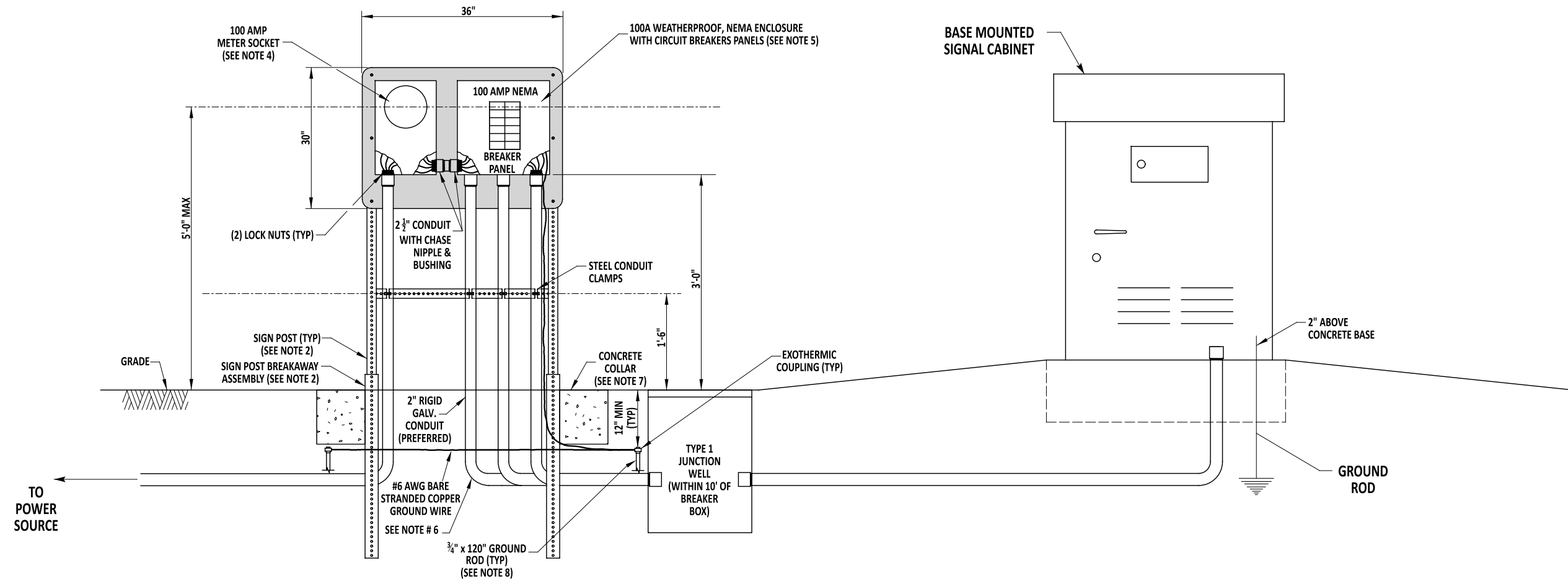


STANDARD INSTALLATION (3+ DEVICES)



NOTES:

- 1). INSTALLATION OF EQUIPMENT BETWEEN SERVICE PEDESTAL AND CONTROLLER CABINET SHALL BE AS PER CONTRACT DRAWINGS/DETAILS.
- 2). SEE DETAIL T-15, SHEET 1, FOR SIGN POST AND BREAKAWAY ASSEMBLY DETAILS.
- 3). ATTACH ALUMINUM PANEL TO SIGN POSTS WITH (6) 5/16" x 2 1/2" LONG GRADE 5 BOLTS, FLAT WASHERS, AND NYLON LOCK NUTS, 3 ON EACH SIDE.
- 4). MOUNT METER SOCKET TO ALUMINUM PANEL WITH (4) 5/16" x 3/4" STAINLESS STEEL BOLTS AND NYLON LOCK NUTS.
- 5). MOUNT CIRCUIT BREAKER BOX TO ALUMINUM PANEL WITH (4) 5/16" x 3/4" STAINLESS STEEL BOLTS AND NYLON LOCK NUTS.
- 6). ALL CONDUITS AND OTHER ASSOCIATED PIECES SHALL BE 2" RIGID GALVANIZED CONDUIT UNLESS SPECIFIED DIFFERENTLY ON THE PLANS OR BY LOCAL UTILITY COMPANY. ALL CONDUITS SHALL BE INSTALLED FROM ENCLOSURE TO TYPE 1 JUNCTION WELL. JUNCTION WELL SHALL BE PLACED WITHIN 10' OF SERVICE PEDESTAL (OR PER PLAN).
- 7). CONCRETE COLLAR SHALL CONTAIN 25 LBS OF CONCRETE AT EACH LEG JUST BELOW GRADE AS DIRECTED BY INSPECTOR.
- 8). GROUND ROD SPREAD SHALL BE TWICE THE LENGTH OF THE GROUND ROD.



Andrew Shott 7/25/23
 ENGINEERING SUPPORT DATE
RECOMMENDED

**ELECTRICAL SERVICE PEDESTAL -
 SIGNAL & ITS COMPONENT INSTALLATIONS - 100 AMP (3+ DEVICES)**
 STANDARD NO. T-17 (2022) SHT. 1 OF 7

REVIEWED
 APPROVED

[Signature]
 DEPUTY DIRECTOR - DESIGN
[Signature]
 CHIEF ENGINEER

3 August 2023
 DATE
 08/10/2023
 DATE

REVISED