

**WIRING COLOR CODE FOR #14/16  
SIGNAL CABLE FOR SIGNAL HEADS**

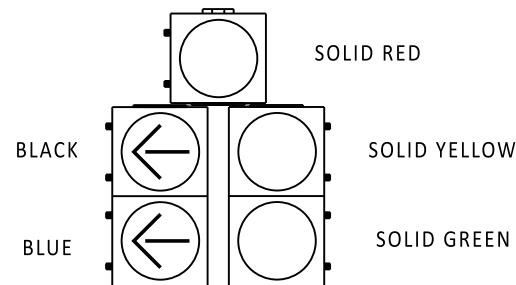
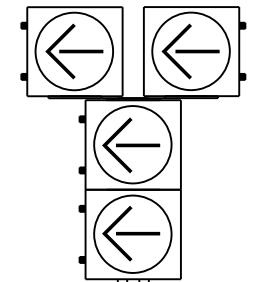
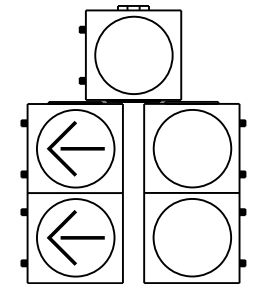
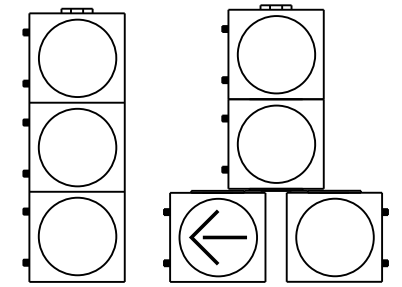
**WIRING COLOR CODE FOR #14/9 TCC**

SCALE : NTS

<u>MAIN STREET SIGNALS</u>	<u>WIRE COLORS</u> SOLID RED SOLID ORANGE SOLID GREEN SOLID WHITE	<u>SIGNAL INDICATION</u> RED YELLOW GREEN NEUTRAL
<u>SIDE STREET SIGNALS</u>	<u>WIRE COLORS</u> BLACK TRACER/RED BLACK TRACER/ORANGE BLACK TRACER/GREEN BLACK TRACER/WHITE	<u>SIGNAL INDICATION</u> RED YELLOW GREEN NEUTRAL
<u>NON-PERMISSIVE LEFT TURN SIGNALS</u>	<u>MAIN STREET WIRE COLORS</u> WHITE TRACER/RED WHITE TRACER/BLACK WHITE TRACER/GREEN WHITE TRACER/BLUE	<u>SIDE STREET WIRE COLORS</u> BLACK/RED TRACER SOLID BLACK SOLID BLUE BLUE/BLACK TRACER
<u>5-SECTION SIGNAL ARROWS</u>	<u>MAIN STREET WIRE COLORS</u> SOLID BLACK SOLID BLUE	<u>SIGNAL INDICATION</u> RED YELLOW GREEN NEUTRAL
	<u>MAIN STREET WIRE COLORS</u> SOLID BLACK SOLID BLUE	<u>SIGNAL INDICATION</u> YELLOW ARROW GREEN ARROW

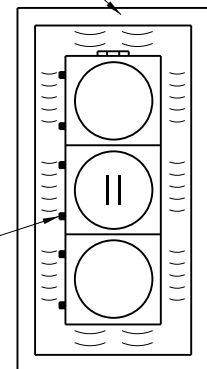
**MAST ARM:**

<u>MAIN STREET</u>	<u>WIRE COLORS</u> SOLID RED SOLID ORANGE SOLID GREEN SOLID WHITE	<u>SIGNAL INDICATION</u> RED YELLOW GREEN NEUTRAL
<u>MAIN STREET PERMISSIVE LEFT</u>	<u>WIRE COLORS</u> SOLID BLACK SOLID BLUE SOLID WHITE	<u>SIGNAL INDICATION</u> YELLOW ARROW GREEN ARROW NEUTRAL
<u>MAIN STREET FLASHING TOP "T"</u>	<u>WIRE COLORS</u> BLACK/RED TRACER SOLID WHITE	<u>SIGNAL INDICATION</u> RED ARROW NEUTRAL



2" REFLECTIVE YELLOW STRIP

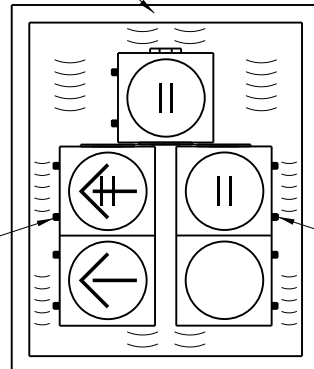
HINGE



**ONE-WAY  
THREE - SECTION  
12" SIGNAL HEADS**

2" REFLECTIVE YELLOW STRIP

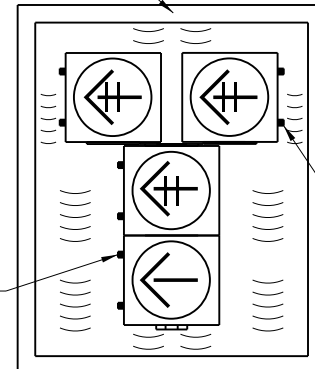
HINGE



**ONE-WAY FIVE-SECTION  
12" SIGNAL HEADS**

2" REFLECTIVE YELLOW STRIP

HINGE



**ONE-WAY  
FOUR - SECTION  
12" SIGNAL HEADS**

**NOTES**

- 1). HEAD CABLE SHALL BE MARKED WITH THE COLOR DESIGNATED FOR EACH DIRECTION OF TRAVEL. RED/NORTH, YELLOW/SOUTH, GREEN/EAST, BLUE/WEST.
- 2). SIDE STREET SIGNAL HEADS SHALL BE SPLICED INTO THE BLACK TRACER WIRES INSTEAD OF SOLID COLOR WIRES.
- 3). ALL SIGNAL HEADS INSTALLED ON MAST ARMS SHALL HAVE OWN SIGNAL CABLE AND SHALL BE SPLICED AT THE BASE.
- 4). ALL INSTALLATIONS SHALL CONTAIN ONE SPLICE PER SIGNAL HEAD.
- 5). ALL BOLTS SHALL BE STAINLESS STEEL.
- 6). ALL BACKPLATES SHALL BE POWDER-COATED ALUMINUM.
- 7). ALL BACKPLATES SHALL BE OUTLINED WITH A 2" REFLECTIVE YELLOW STRIP.

**LEGEND:**

|| LOCATION OF TERMINAL BLOCK



*Andrew Shott*  
ENGINEERING SUPPORT  
RECOMMENDED  
DATE 12/13/2022

WIRING INSTALLATION TYPICALS - WIRING COLOR CODES

STANDARD NO. T-9 (2022) SHT. 4 OF 4

REVIEWED

*Mike Jones*  
DEPUTY DIRECTOR - DESIGN  
DATE 12/16/2022

APPROVED

*Shrey*  
CHIEF ENGINEER  
DATE 12/21/2022