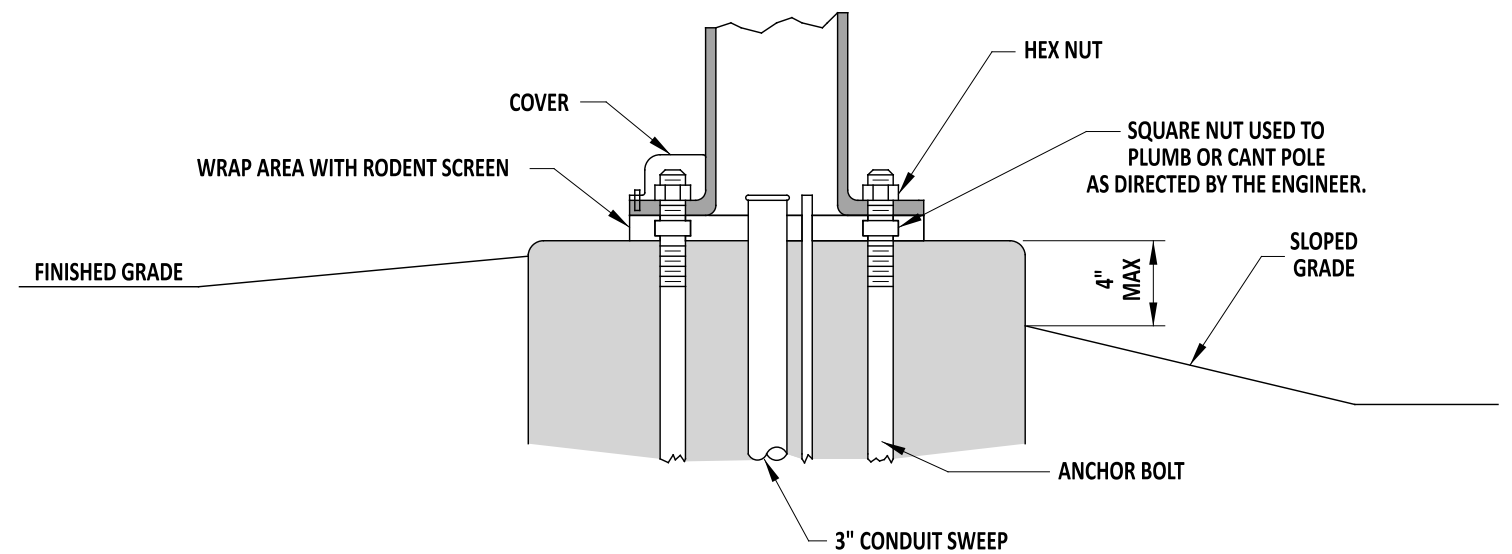


TYPICAL SECTION (BASES 1,2,2A,2B,3,3A, AND 3B)



TYPICAL INSTALLATION (BASES 1,2,2A,2B,3,3A, AND 3B)

NOTE:

- 1). SEE POLE BASE DATA CHART ON DETAIL T-5, SHEETS 3 AND 4, FOR POLE BASE DIMENSIONS.
- 2). STRAIN POLES SHALL USE 2 1/4" ANCHOR BOLTS AND MAST ARMS UP TO 60' SHALL USE 2" ANCHOR BOLTS. ANCHOR BOLTS TO BE SUPPLIED BY THE DEPARTMENT.
- 3). MAST ARMS FROM 70-90' SHALL USE 2 1/2" ANCHOR BOLTS, SUPPLIED BY THE DEPARTMENT.
- 4). ALL OTHER POLE BASES NOT LISTED SHALL ADHERE TO MANUFACTURER AND DEPARTMENT STANDARDS.
- 5). PER MANUFACTURER SPECIFICATIONS AND DETAILS, THE CONTRACTOR SHALL ENSURE THAT THE FOLLOWING LENGTH OF THREADS ARE EXPOSED PER EACH POLE TYPE:
 - STRAIN: 10 1/2"
 - B (MAST): 9 1/2"
 - C (MAST): 11 1/4"
 - CAMERA: 7"
 - LIGHTING: 4 1/2"
- 6). MAXIMUM EXPOSED FOUNDATION DEPTH OF 4" AT FINISHED GRADE TO APPROACHING TRAFFIC.



Andrew Shott
ENGINEERING SUPPORT
RECOMMENDED
DATE 7/25/23

POLE BASES - TYPICAL SECTION AND INSTALLATION
(BASES 1, 2, 2A, 2B, 3, 3A, AND 3B)
STANDARD NO. T-5 (2022) SHT. 2 OF 5

REVIEWED
APPROVED
DATE 3 August 2023
DATE 08/10/2023

REVISED