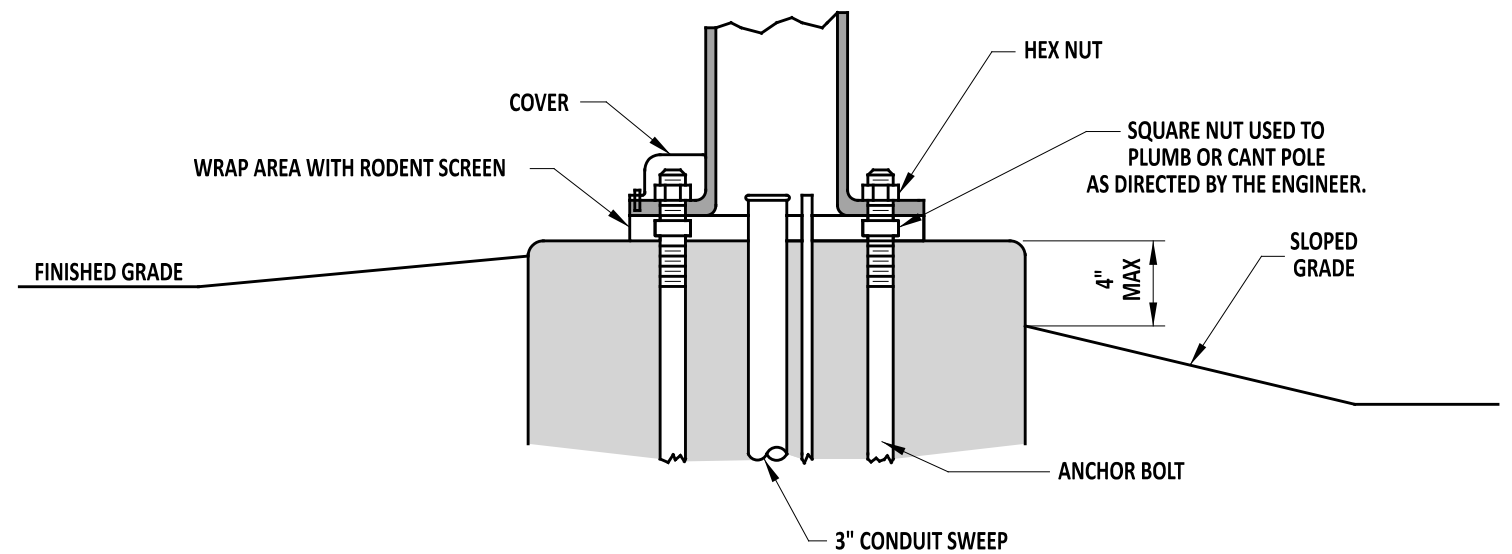


TYPICAL SECTION (BASES 1, 2, 2A, 2B, 3, 3A, AND 3B)



TYPICAL INSTALLATION (BASES 1, 2, 2A, 2B, 3, 3A, AND 3B)

NOTE:

- 1). SEE POLE BASE DATA CHART ON DETAIL T-5, SHEET 3 OF 4, FOR POLE BASE DIMENSIONS.
- 2). STRAIN POLES AND MAST ARMS UP TO 60' SHALL USE 2 1/4" ANCHOR BOLTS, SUPPLIED BY THE DEPARTMENT.
- 3). MAST ARMS FROM 70-90' SHALL USE 2 1/2" ANCHOR BOLTS, SUPPLIED BY THE DEPARTMENT.
- 4). ALL OTHER POLE BASES NOT LISTED SHALL ADHERE TO MANUFACTURER AND DEPARTMENT STANDARDS.
- 5). PER MANUFACTURER SPECIFICATIONS AND DETAILS, THE CONTRACTOR SHALL ENSURE THAT THE FOLLOWING LENGTH OF THREADS ARE EXPOSED PER EACH POLE TYPE:
 - STRAIN: 10 1/2"
 - B (MAST): 9 1/2"
 - C (MAST): 11 1/4"
 - CAMERA: 7"
 - LIGHTING: 4 1/2"
- 6). MAXIMUM EXPOSED FOUNDATION DEPTH OF 4" AT FINISHED GRADE IN ANY ORIENTATION AROUND POLE BASE.



ENGINEERING SUPPORT
 RECOMMENDED
 DATE: 12/08/2021

POLE BASES - TYPICAL SECTION AND INSTALLATION
 (BASES 1, 2, 2A, 2B, 3, 3A, AND 3B)
 STANDARD NO. T-5 (2021) SHT. 2 OF 4

REVIEWED
 DEPUTY DIRECTOR - DESIGN DATE: 12/08/2021
 APPROVED
 CHIEF ENGINEER DATE: 12/20/2021