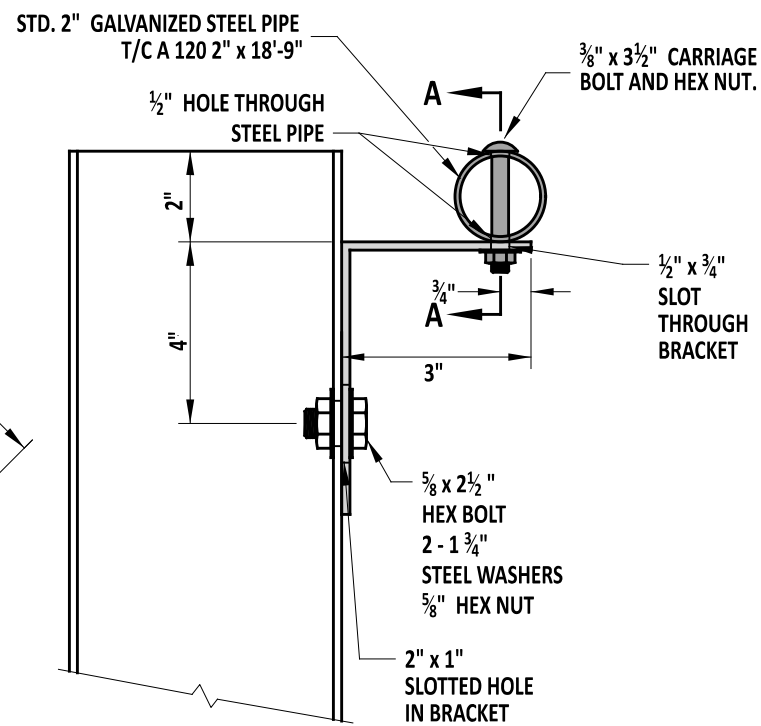
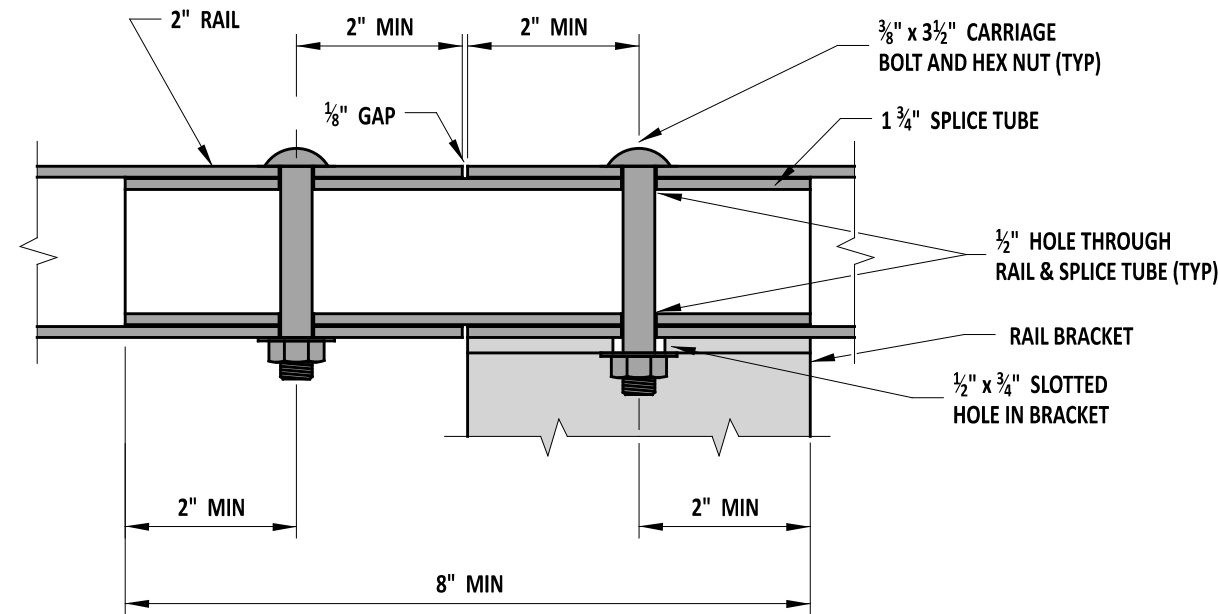


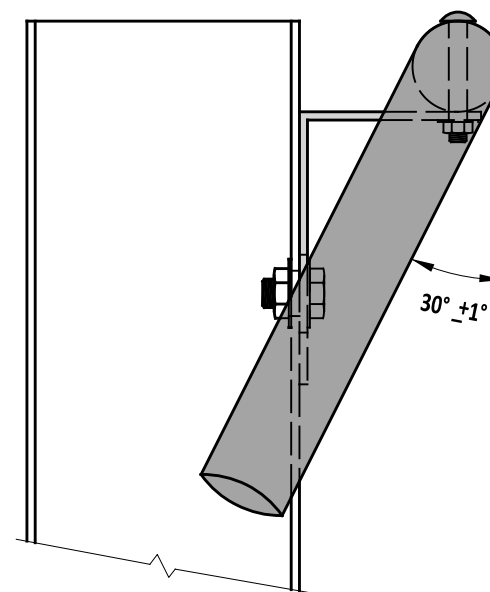
REAR VIEW WITH START & END SECTION



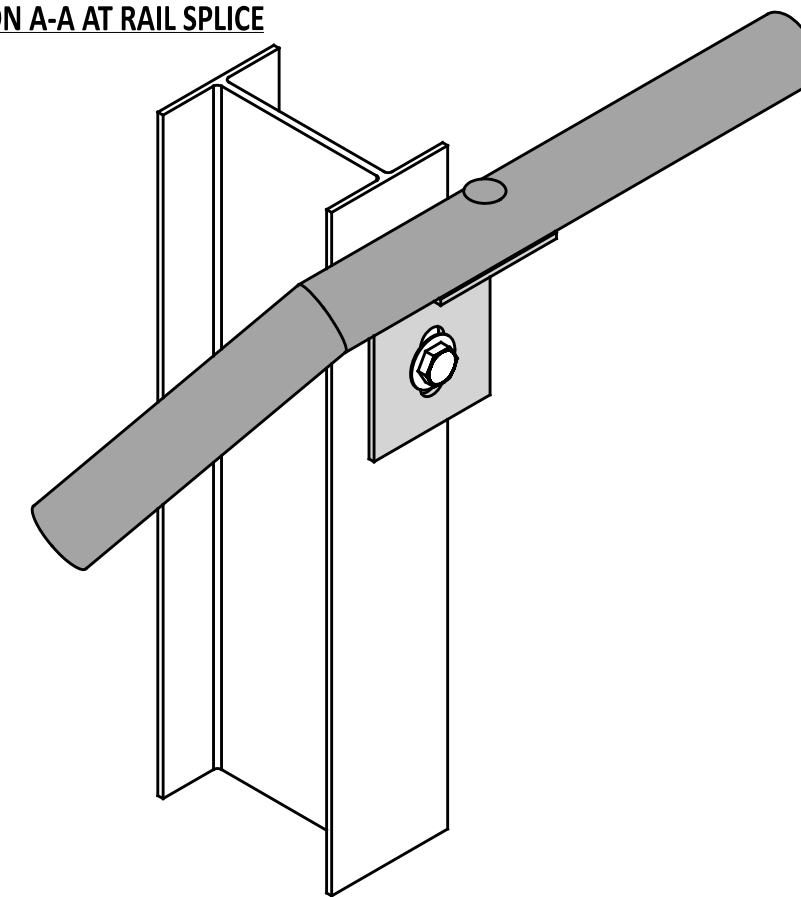
SIDE VIEW



SECTION A-A AT RAIL SPLICE



SIDE VIEW WITH START & END SECTION



ISOMETRIC VIEW WITH START & END SECTION

**NOTES:**

- 1). USE THIS RAIL ADJACENT TO A PEDESTRIAN ACCESS ROUTE.
- 2). SHOP TO FABRICATE ALL COMPONENTS OF THE RAIL INCLUDING CUTTING AND DRILLING.
- 3). BUR ALL EXPOSED THREADED HARDWARE TO ENSURE NUTS CAN NOT BE REMOVED.
- 4). PRIOR TO GALVANIZING, SHOP TO DRILL GUARDRAIL POSTS THAT RAIL BRACKETS WILL BE ATTACHED TO.
- 5). PLACE RAIL SPLICES AT RAIL SUPPORT BRACKETS, USING THE SAME BOLT TO ATTACH THE RAIL TO THE BRACKET, TO SECURE THE SPLICE TUBE.
- 6). ONLY INSTALL RAILS TO STANDARD W-BEAM SECTIONS AND AT LEAST ONE POST AWAY FROM THE PAYMENT LIMITS OF THE END TREATMENT.
- 7). FOR TYPE 2-31 GUARDRAIL, BOLT RAILING TO EVERY OTHER POST OR AT A SPACING OF 6'-3".



*John C.*  
ENGINEERING SUPPORT  
RECOMMENDED  
DATE 12/08/2021

GUARDRAIL MOUNTED RAIL (ONLY FOR POSTED SPEEDS AT OR BELOW 25 MPH)

STANDARD NO. B-13 (2021) SHT. 10 OF 12

REVIEWED

*Mike Lee*  
DEPUTY DIRECTOR - DESIGN  
DATE 12/08/2021

APPROVED

*Sheryl*  
CHIEF ENGINEER  
DATE 12/20/2021