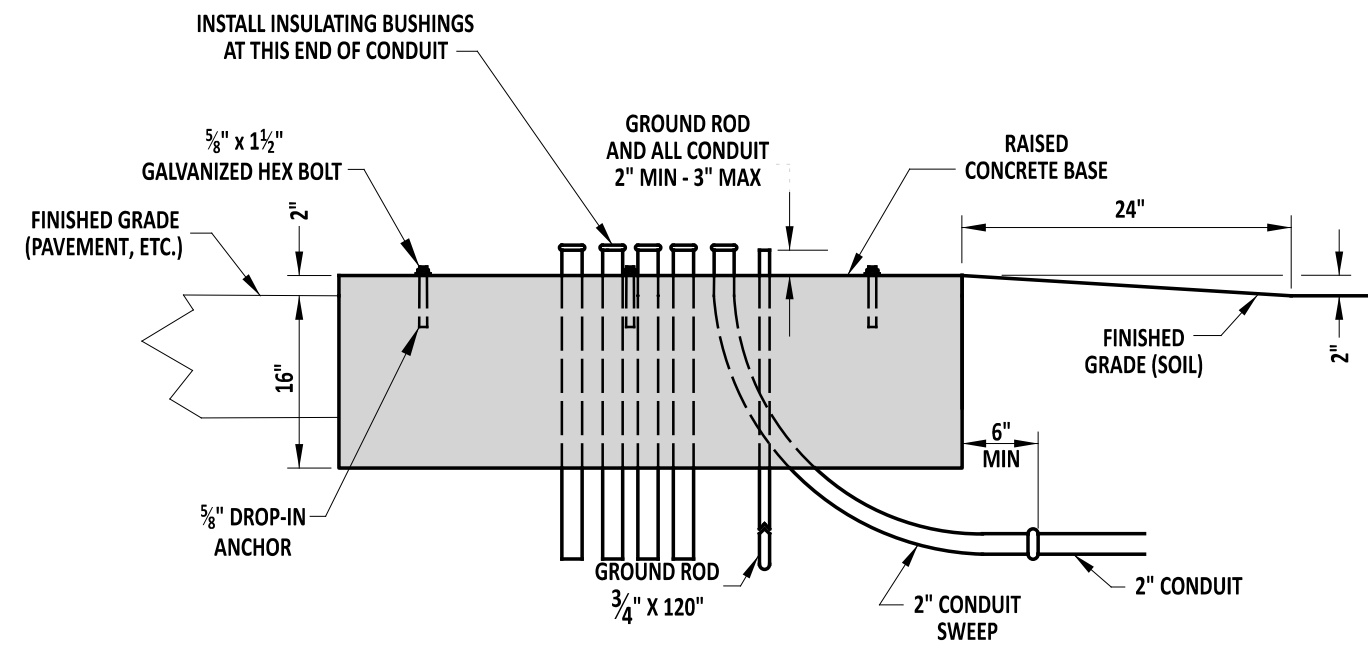
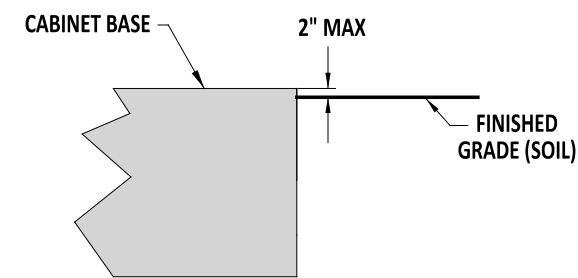


**"P & R" CABINET
PLAN VIEW**



SECTION A-A



SECTION B-B

NOTE:

- 1). CONDUITS SHALL BE EVENLY SPACED, WITH MINIMUM 2" WIDTH SPACING ESTABLISHED BETWEEN ALL CONDUITS.
- 2). IF FULL SIZE OF BASE CANNOT BE ESTABLISHED, A 56" X 58" BASE SHALL BE INSTALLED PER DELDOT'S SIGNAL CONSTRUCTION INSPECTOR.




 ENGINEERING SUPPORT DATE 09/01/2020
RECOMMENDED

CABINET BASES, TYPES P & R

STANDARD NO. T-4 (2020) SHT. 2 OF 2

REVIEWED  DATE 09/01/2020
DEPUTY DIRECTOR - DESIGN

APPROVED  DATE 09/01/2020
CHIEF ENGINEER