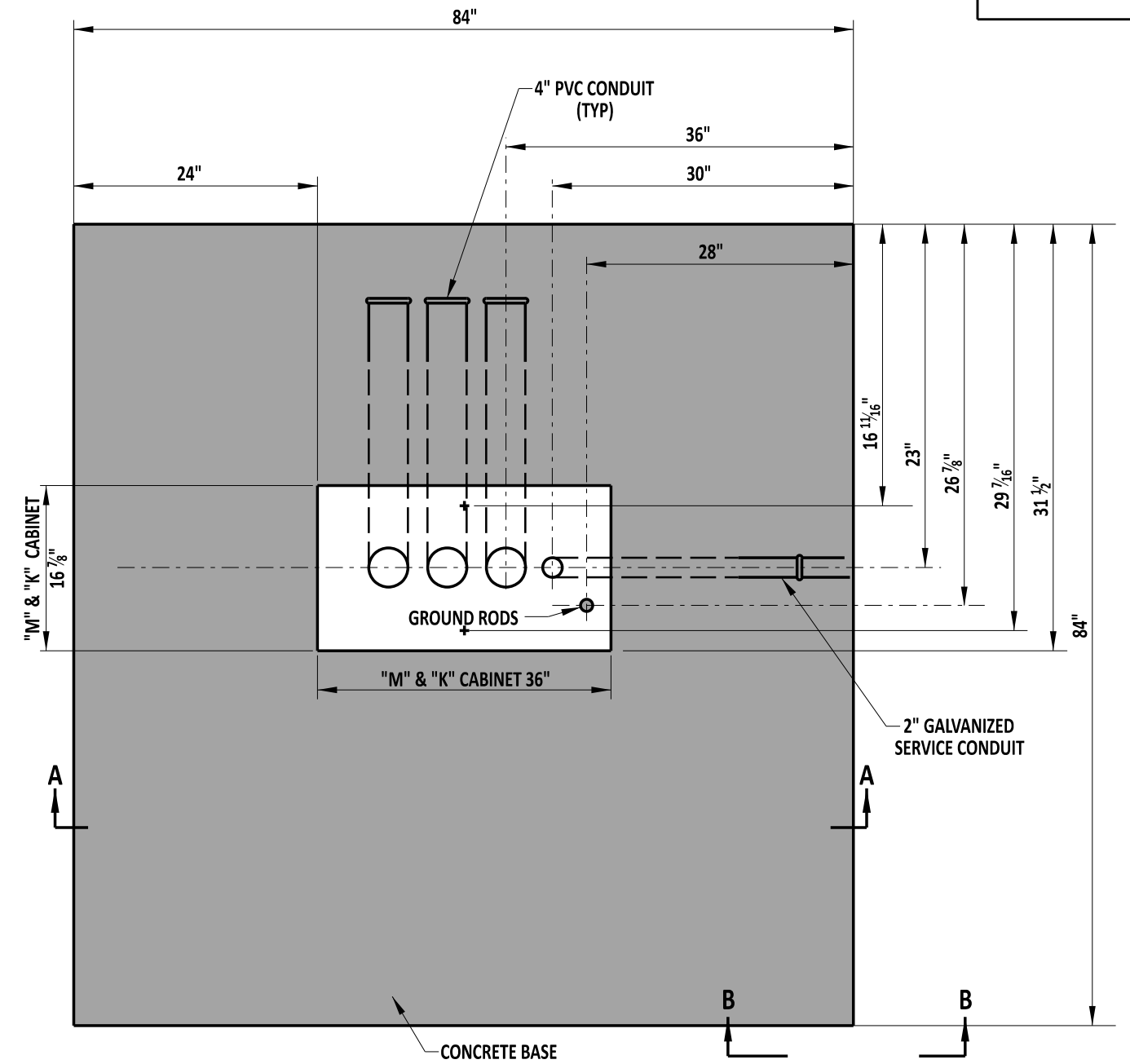


**"F" CABINET
PLAN VIEW**



**"M" & "K" CABINET
PLAN VIEW**

NOTE:

- 1). CONDUITS SHALL BE EVENLY SPACED, WITH MINIMUM 2" WIDTH SPACING ESTABLISHED BETWEEN ALL CONDUITS.
- 2). FOR VIEW OF SECTION A-A AND SECTION B-B, SEE DETAIL T-4, SHEET 2 OF 2.
- 3). IF FULL SIZE OF BASE CANNOT BE ESTABLISHED, A 56"X 58" BASE SHALL BE INSTALLED PER DELDOT'S SIGNAL CONSTRUCTION INSPECTOR.



Paul Johnson
ENGINEERING SUPPORT
RECOMMENDED
DATE 09/01/2020

CABINET BASES, TYPES M, K, & F
STANDARD NO. T-4 (2020)
SHT. 1 OF 2

REVIEWED *Mike Jones*
DEPUTY DIRECTOR - DESIGN
DATE 09/01/2020
APPROVED *Shrey*
CHIEF ENGINEER
DATE 09/01/2020