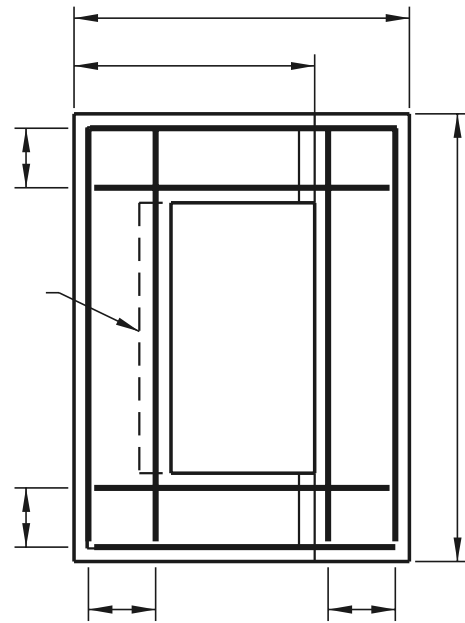
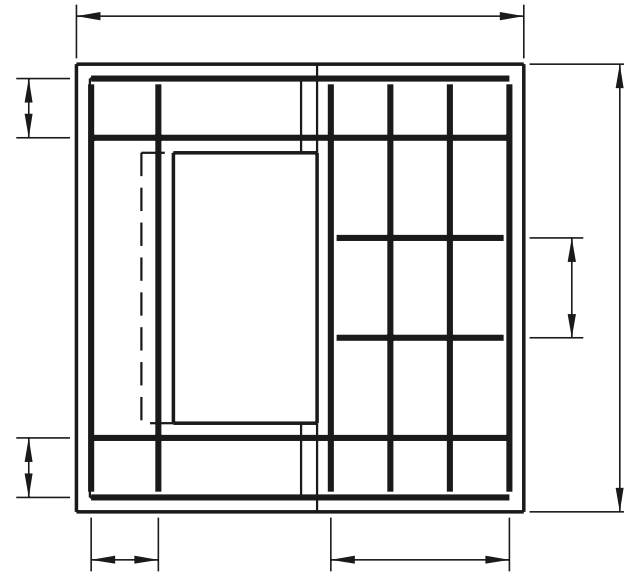


NOTE :

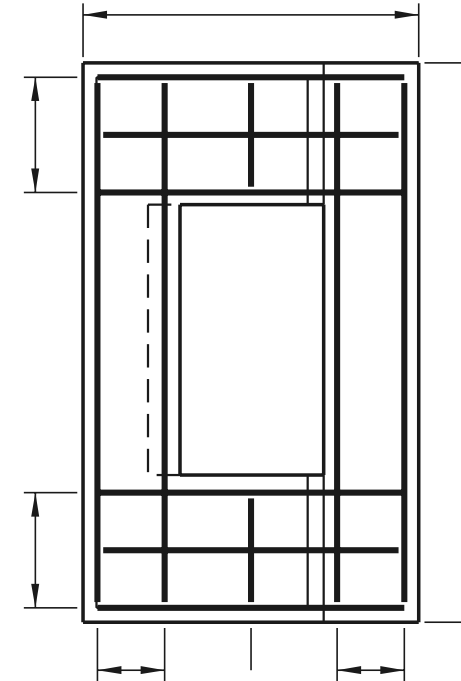
2. DELETE ENCROACHING REINFORCING BARS WHEN USING TYPES B, C, D, & E TOP UNITS.
3. COVER SLABS ARE TO BE PRE-CAST.



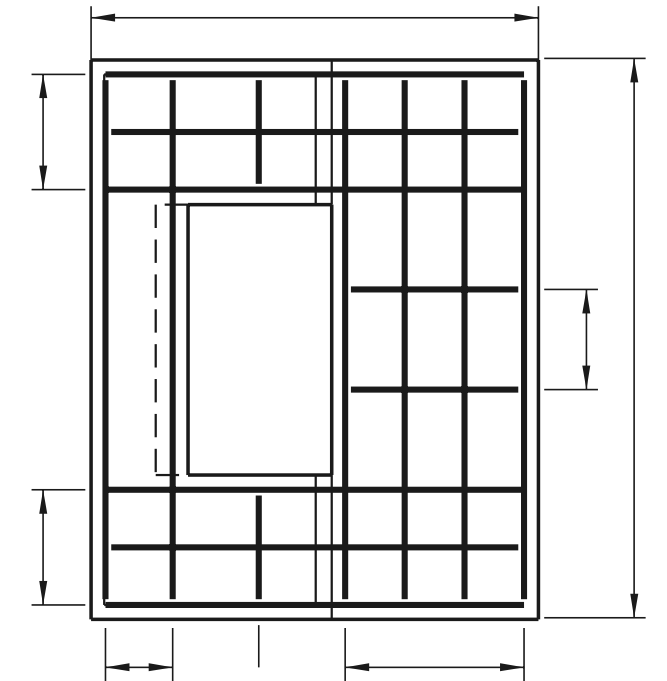
TYPE 1



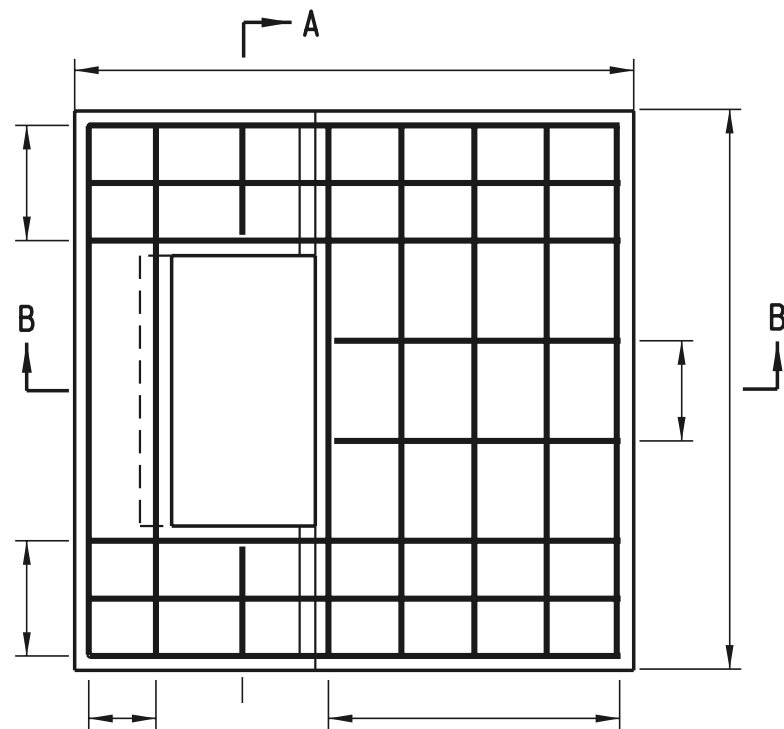
TYPE 2



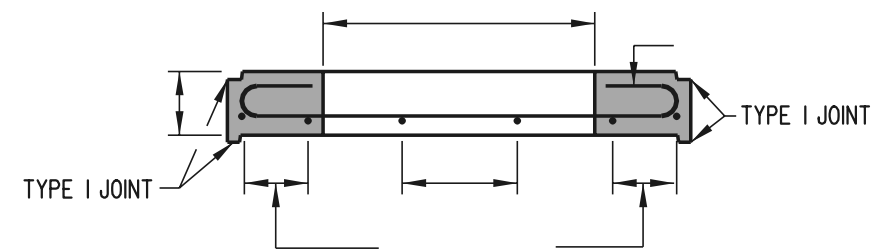
TYPE 3



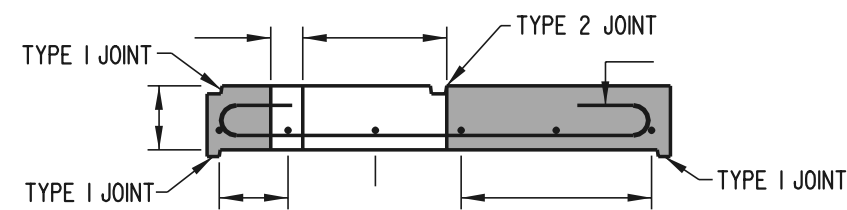
TYPE 4



TYPE 5



SECTION A-A



SECTION B-B

DRAINAGE INLET COVER SLAB DETAILS

DRAINAGE INLET DETAILS

MARK	A	B	G	J

ROTATE BARS TO MAINTAIN MIN. COVER

BAR LIST

N.T.S.