

**4.3.5 K-02742. Dwelling (“The Old Barney Wynn Place”)
Barratts Chapel Road
No longer extant**

Resource K-02742 was originally identified as “The Old Barney Wynn Place” in a 1980 survey. The house burned down and there is no trace left of the house or outbuildings. Several ranch houses now exist in the approximate former location of K-02742.

**4.3.6 K-02743. Agricultural Complex
3762 Barratts Chapel Road
SM-00-130.00-02-03.10**

Description: This 2.6-acre property is located on the south side of Barratts Chapel Road to the west of Double Run. It was once the site of the K-02743 agricultural complex, but the only remaining structure historically associated with the farmstead is a silo.

The silo is approximately 80 feet tall, with a diameter of approximately 30 feet. It was probably constructed ca. 1920. The concrete stave structure is built on a concrete slab foundation, strengthened by steel ribbing, and capped with a metal dome.

Applicable Historic Context(s): Upper Peninsula Zone; Urbanization and Early Suburbanization (1880-1940±); Agriculture; Architecture, Engineering, and Decorative Arts.

Historical Overview: The current 2.6-acre parcel was subdivided from a larger agriculture complex sometime after the property was surveyed in 1980. In the 1980 original survey form, this resource contained a ca. 1875 farmhouse, a shed, two barns, a silo, two animal stall structures, and a privy (Appendix B). Today, only the silo remains of the original ensemble of buildings. New housing developments are located nearby.

Evaluation: The silo has been disassociated from its original setting (the fields remain but all of the structures are gone), association, and feeling. The resource K-02743 has no integrity as an agricultural complex due to the loss of the farmhouse, barns, and other outbuildings. The silo does retain its original design, materials, and workmanship, but its common utilitarian form does not demonstrate significance under NRHP Criterion C as a work of engineering or under NRHP Criterion D as a potential source of construction information. K-02743 is not eligible for listing in the NRHP.

K-02743 Photograph

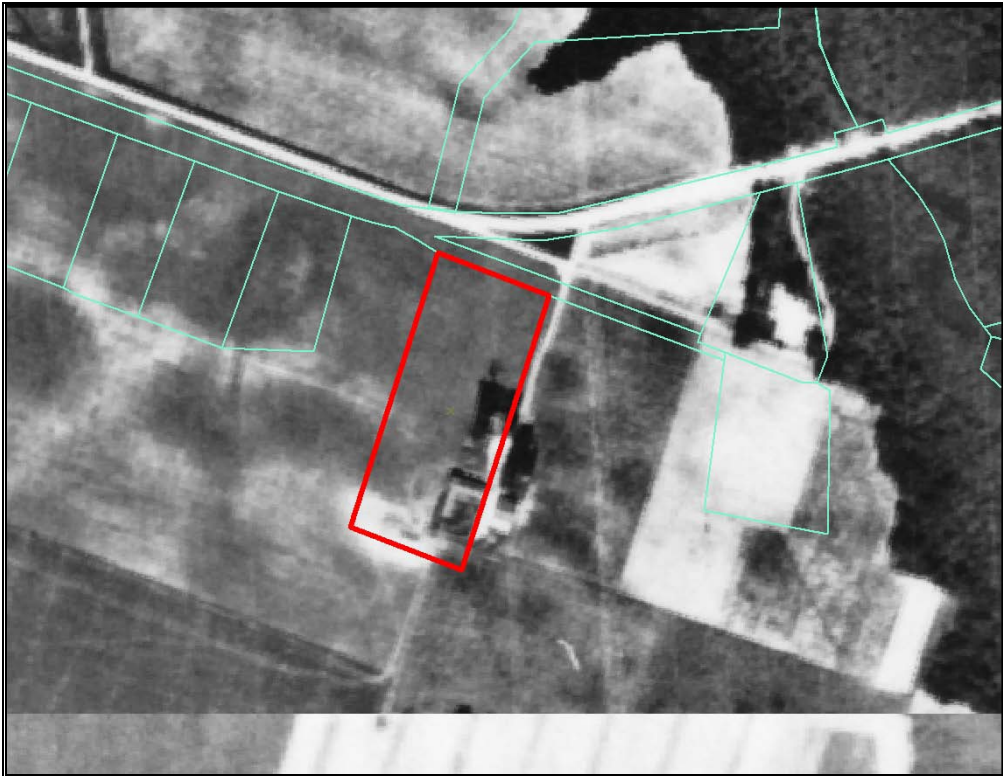


Silo, east elevation, facing west.

K-02743 Mapping



K-02743 tax parcel on 2002 aerial photograph (Delaware DataMIL 2008).



K-02743 tax parcel on 1937 aerial photograph (Delaware DataMIL 2008).