

4.0 SURVEY RESULTS

4.1 Introduction

Eighteen historic structures resources were identified within the Barratts Chapel Road Improvements project historic structures APE during the Phase IA identification-level survey. Eleven of the historic structures resources were previously surveyed and seven of the historic structures resources (labeled K-07601 through K-07607) were newly identified. K-00103 Barratt's Chapel is the only resource within the APE that is listed in the NRHP. Only one previously surveyed resource, K-02742, is no longer present in the historic structures APE. Three other previously surveyed agricultural complexes -- K-02741, K-02743, and K-02744 -- have lost their primary structures, but associated surviving structures are identified in the resource descriptions in Section 4.3. Complete new and/or updated CRS forms for each resource can be found in Appendix A. Copies of the existing CRS forms, which date primarily from 1980, are included in Appendix B.

4.2 Overview of the APE

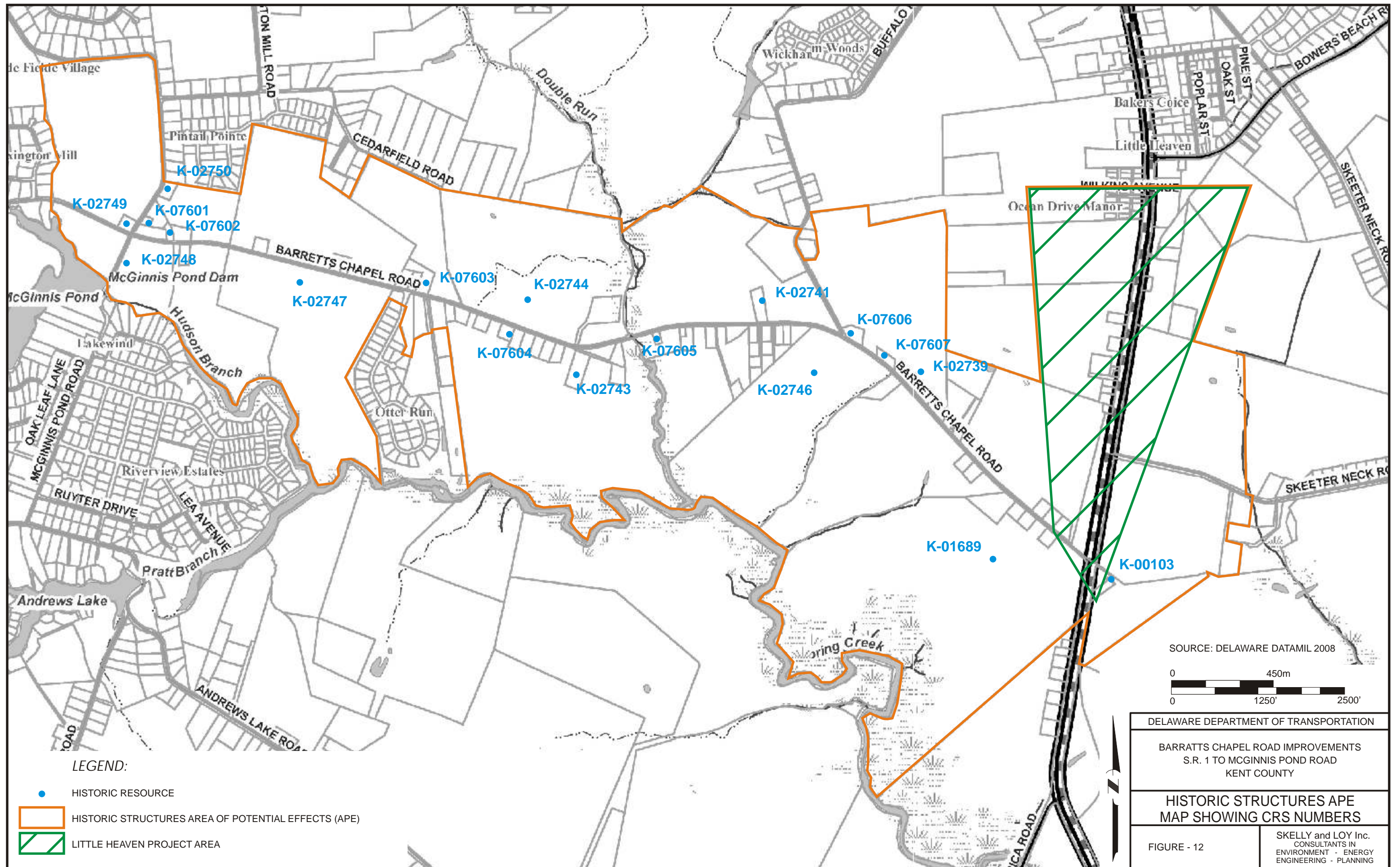
Most of the project area consists of farmland that was first occupied as early as the late seventeenth or early eighteenth century. Generations of owner-farmers and tenant-farmers worked the land, raising crops like wheat and corn, growing apple and peach orchards, and caring for livestock. Several mills located near McGinnis Pond processed the produce and raw materials from these farms. In the mid- to late twentieth century, several of the large farm properties were subdivided into small one-acre or half-acre lots with single-family homes.

The historic resources are described and evaluated in Section 4.3. The resources are listed numerically by their CRS number and recorded on the historic structures APE maps (Figures 12 and 13).

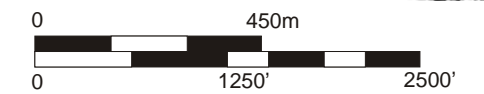
4.3 Historic Architectural Resource Survey Analysis

4.3.1 **K-00103. Barratt's Chapel (NRHP-listed)** **S.R. 1 opposite Barratts Chapel Road** **SM-00-131.00-01-11.01+**

Resource K-00103 Barratt's Chapel is listed in the NRHP. As part of the Little Heaven project, the firm A.D. Marble was charged with determining the NRHP-boundary of Barratt's Chapel. No further research or evaluation is necessary for this resource.



SOURCE: DELAWARE DATAMIL 2008



DELAWARE DEPARTMENT OF TRANSPORTATION

BARRATTS CHAPEL ROAD IMPROVEMENTS
S.R. 1 TO MCGINNIS POND ROAD
KENT COUNTY

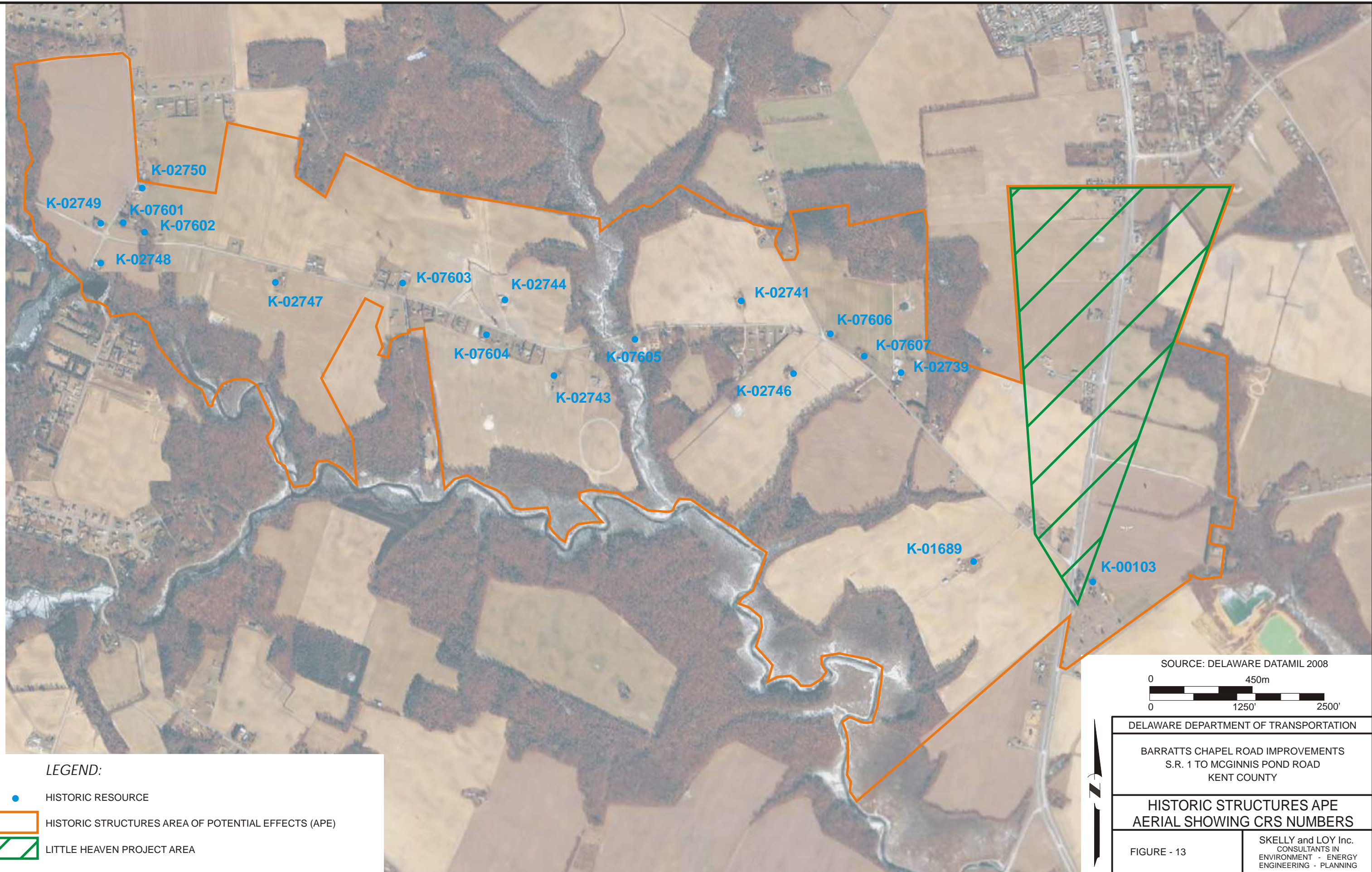
**HISTORIC STRUCTURES APE
MAP SHOWING CRS NUMBERS**

FIGURE - 12

SKELLY and LOY Inc.
CONSULTANTS IN
ENVIRONMENT - ENERGY
ENGINEERING - PLANNING

LEGEND:

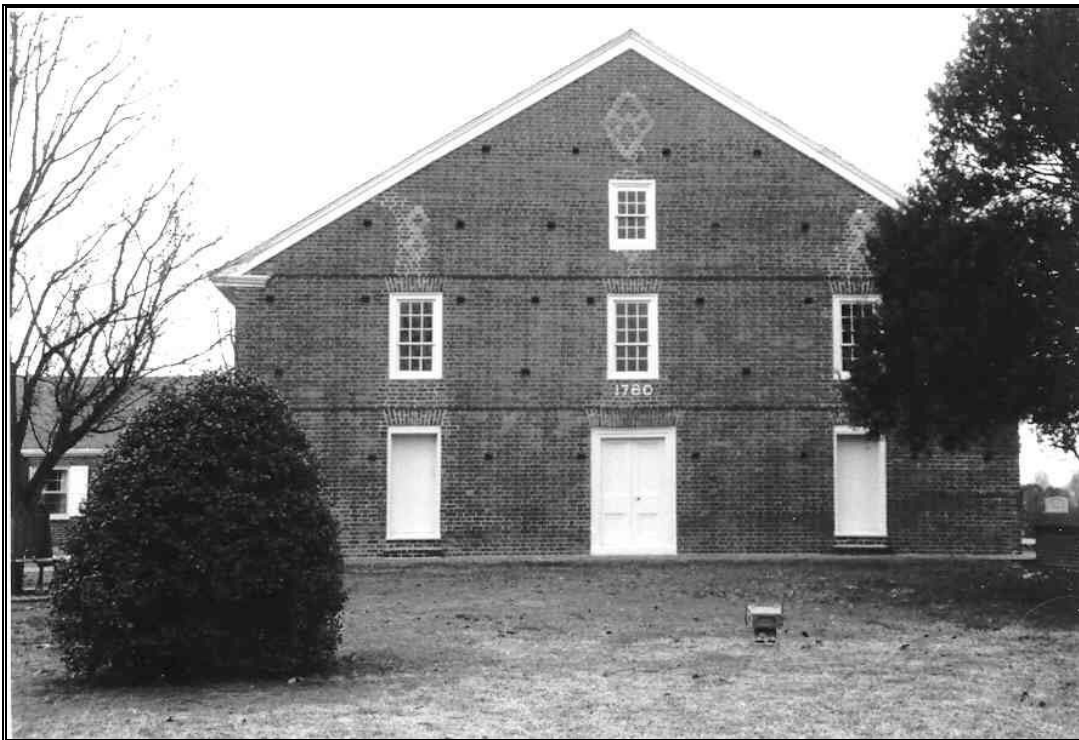
- HISTORIC RESOURCE
- HISTORIC STRUCTURES AREA OF POTENTIAL EFFECTS (APE)
- LITTLE HEAVEN PROJECT AREA



K-00103 Photographs



Barratt's Chapel, north and west (front) elevations, facing east.



Barratt's Chapel, west (front) elevation, facing northeast.



Vestry, museum, and Barratt's Chapel, north and west elevations, facing southeast.



Barratt's Chapel cemetery gate, north elevation, facing southeast.