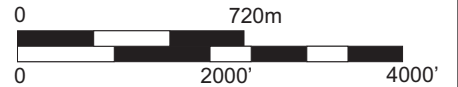
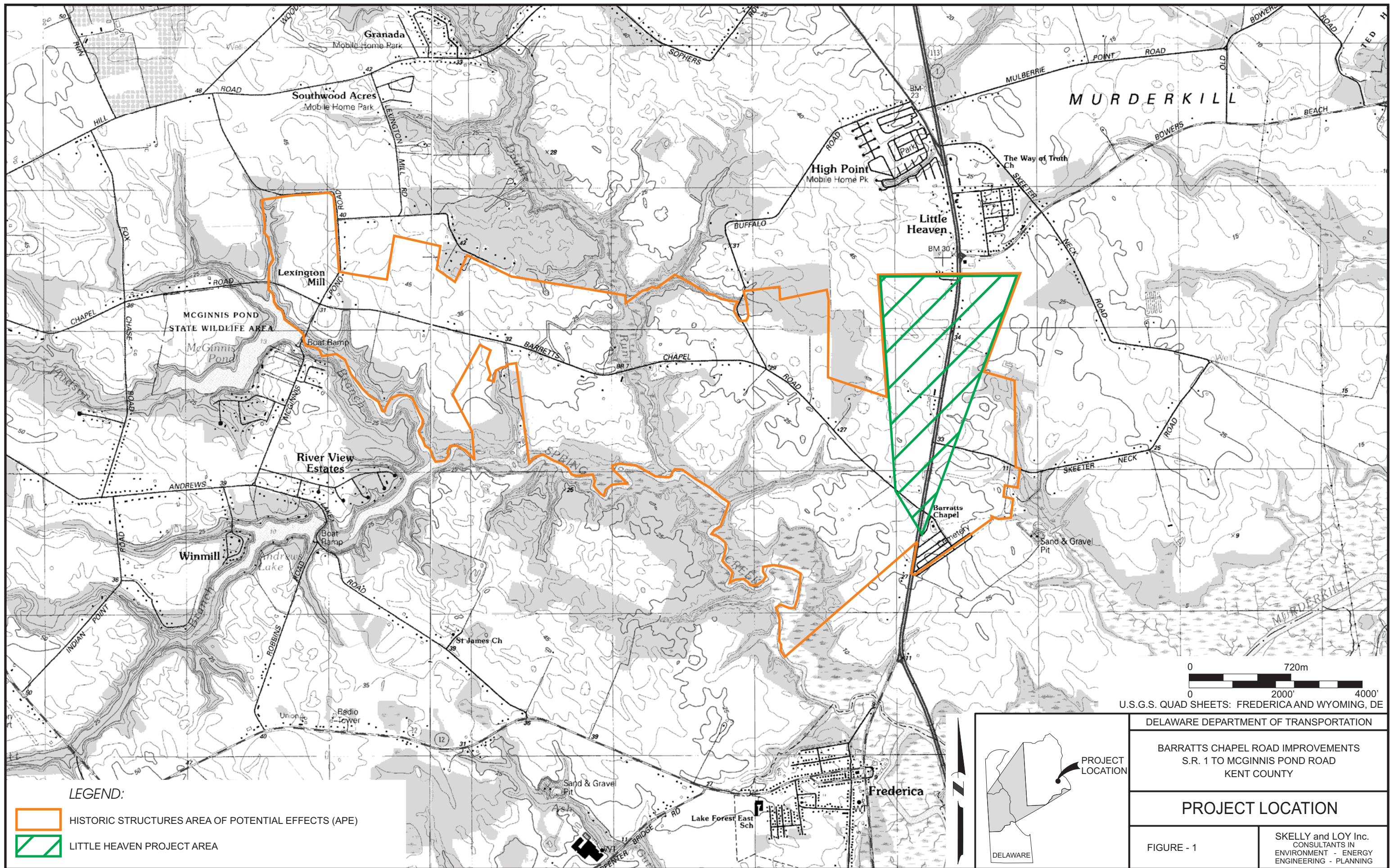


## 1.0 INTRODUCTION



This report describes the results of a Phase II evaluation-level historic architectural resource survey conducted on behalf of the Delaware Department of Transportation (DelDOT) for the Barratts Chapel Road Improvements (State Road [S.R.] 1 to McGinnis Pond Road) project, located in Kent County, Delaware (Figures 1 and 2). The Phase II report was prepared in order to evaluate the 18 historic properties, which were identified in the combined Phase IA Cultural Resources report for this project, for eligibility for listing in the National Register of Historic Places (NRHP) (Gundy *et al.* 2008). The resources meet the minimum age criterion of 50 years and are located within the historic structures Area of Potential Effects (APE). The project area is located on the United States Geological Survey (USGS) Wyoming, Delaware (USGS 1981) and Frederica, Delaware (USGS 1982) 7.5 minute topographic quadrangles.

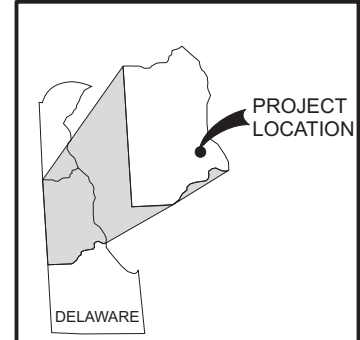
The Phase II evaluation-level historic architectural resource survey is designed to assure compliance with applicable state and federal legislation, including Section 106 of the National Historic Preservation Act of 1966, the National Environmental Policy Act of 1969, 36 CFR 800, and Executive Order 11593, as amended. The forms and photographs associated with this report will be filed at the Delaware State Historic Preservation Office (DESHPO) in Dover, Delaware. Additional copies will be filed at the offices of Skelly and Loy, Inc. in Pittsburgh, Pennsylvania.



U.S.G.S. QUAD SHEETS: FREDERICA AND WYOMING, DE

**LEGEND:**

-  HISTORIC STRUCTURES AREA OF POTENTIAL EFFECTS (APE)
-  LITTLE HEAVEN PROJECT AREA



DELAWARE DEPARTMENT OF TRANSPORTATION	
BARRATTS CHAPEL ROAD IMPROVEMENTS S.R. 1 TO MCGINNIS POND ROAD KENT COUNTY	
<b>PROJECT LOCATION</b>	
FIGURE - 1	SKELLY and LOY Inc. CONSULTANTS IN ENVIRONMENT - ENERGY ENGINEERING - PLANNING



**LEGEND:**

- HISTORIC STRUCTURES AREA OF POTENTIAL EFFECTS (APE)
- LITTLE HEAVEN PROJECT AREA



DELAWARE DEPARTMENT OF TRANSPORTATION  
 BARRATTS CHAPEL ROAD IMPROVEMENTS  
 S.R. 1 TO MCGINNIS POND ROAD  
 KENT COUNTY

**PLAN VIEW**

FIGURE - 2	<b>SKELLY and LOY, Inc.</b> CONSULTANTS IN ENVIRONMENT - ENERGY ENGINEERING - PLANNING
------------	---

SOURCE: DELAWARE DATAMIL 2008