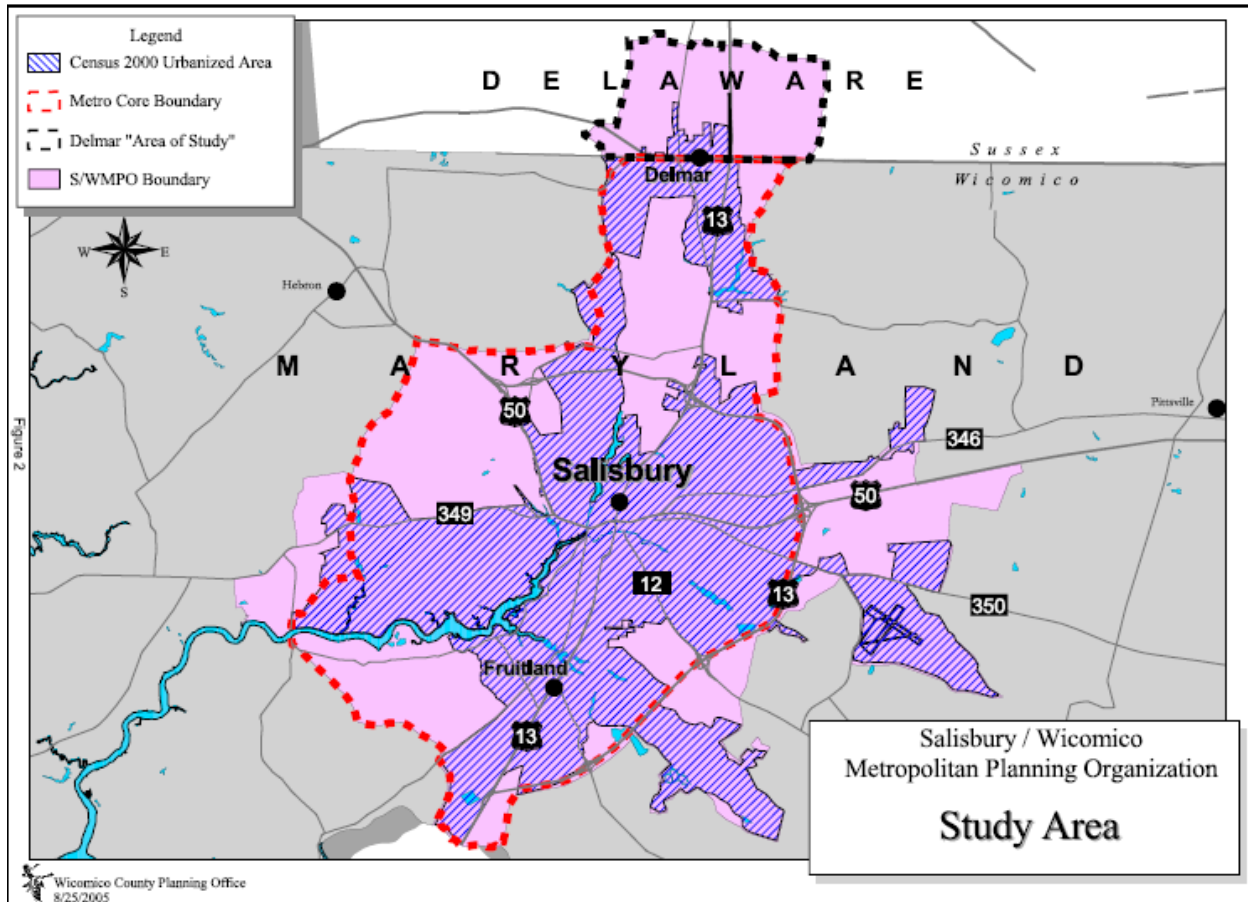


HIGHWAY STATISTICS

2011 Salisbury MPO Congestion Management

Salisbury/Wicomico Metropolitan Planning Organization (including Delmar, DE)



Salisbury/Wicomico Metropolitan Planning Organization (including Delmar, DE)

As a result of the 2000 Census, the urbanized area of Salisbury, Maryland reached the 50,000-population threshold that requires establishment of an MPO. Established in 2004, the Salisbury/Wicomico Metropolitan Planning Organization (S/W MPO) includes the Town of Delmar, DE, and a portion of Sussex County that is adjacent to Delmar. It is anticipated that other areas of Sussex County will meet the 50,000-population threshold after the next census in 2010.

A Congestion Management System or Process is required for Transportation Management Areas (TMAs) – urbanized areas with a population over 200,000. When initially established, the S/W MPO had an urbanized population of approximately 60,000. Although a Congestion Management System is not required, the MPO has undertaken detailed transportation corridor studies for areas experiencing significant development pressures and

increased congestion. At the time of this publication, the S/W MPO has undertaken and completed five (5) detailed corridor studies including the following:

1. Pemberton Drive Corridor Study;
2. East Side Corridor Study;
3. Riverside Drive Corridor Study;
4. U.S. Route 13 / Bi-State Blvd / Foskey Lane Planning Study; and
5. U.S. Route 13 North / Naylor Mill Road Corridor Study.

The above mentioned studies analyze land use and existing and projected traffic volumes based on development in the study area, and subsequently determines the impact(s) within the corridors. The analysis consists of identifying existing traffic volumes and capacity of the roadways based on development trends and anticipated development, as well as estimates existing and projected Levels of Service for the years 2010, 2020, and 2030. Based on the anticipated development, as well as Level of Service, recommendations are provided to ensure safety and operations are functioning at an acceptable level. The impacted jurisdiction(s) can use these short-term and long-term recommendations to program future improvements (subject to funding availability).

Source: Keith D. Hall
Long Range/Transportation Planner
Ph: (410) 548-4860
Khall@wicomicocounty.org
P.O. Box 870
Salisbury, Maryland 21803

More information about the aforementioned studies is located online at the S/W MPO's website, www.swmpo.org

Delaware MPOs

Delaware is a small state with 3 MPOs. DelDOT coordinates with these agencies on congestion management, related funding needs, and other transportation issues.

The DelDOT representative on the Salisbury / Wicomico Metropolitan Planning Organization is:

Karen Emory Brittingham
Real Estate Representative, Planning
DelDOT
(302) 760-4805
Karen.Brittingham@state.de.us