

US 13, SUSSEX HIGHWAY, AND SR404 INTERSECTION REALIGNMENT AND BRIDGEVILLE SERVICE ROADS [Project No. 22-124-06]

PROJECT SCOPE/DESCRIPTION: This project involves the realignment of the US 13 and SR404, North Main Street intersection to form a perpendicular intersection. The realignment will eliminate the skew and add turn lanes at this intersection. Further, this project will construct parallel service roads on both sides of US 13 (from S545, Rifle Range Road to SR404, North Main Street) at this intersection.

PROJECT JUSTIFICATION: This realignment will improve both flow and safety at this intersection. The service roads will help reduce traffic congestion and preserve capacity along the US 13 corridor.

County:	Sussex
Municipality:	Bridgeville
Funding Program:	Road System – Collectors
Functional Category:	Management
Representative District:	35
Senatorial District:	19



US 13, SUSSEX HIGHWAY, AND SR404 INTERSECTION REALIGNMENT AND BRIDGEVILLE SERVICE ROADS (CONTINUED)**PROJECT FUNDING INFORMATION**

Project	Funding Type	Original Estimate	Current Estimate	Authorization	Committed as of 12/31/04	Expended as of 12/31/04	Committed Unexpended as of 12/31/04	Authorization Available
US 13, Sussex Highway, and SR404 Intersection Realignment and Bridgeville Service Roads		\$ 15,948.7						
Prior Years	State			\$ 3,749.5	\$ 3,719.5	\$ 79.3	\$ 3,640.2	\$ 30.0
	Federal			\$ 999.2	\$ 781.9	\$ 267.9	\$ 514.0	\$ 217.3
	Other			\$ 0.0	\$ 0.0	\$ 0.0	\$ 0.0	\$ 0.0
FY 2005	State		\$ 19,458.7	\$ 0.0	\$ 0.0	\$ 0.0	\$ 0.0	\$ 30.0
	Federal			\$ 0.0	\$ 0.0	\$ 0.0	\$ 0.0	\$ 217.3
	Other			\$ 0.0	\$ 0.0	\$ 0.0	\$ 0.0	\$ 0.0
FY 2006 Request	State			\$ 4,710.0				\$ 4,740.0
	Federal			\$ 10,000.0				\$ 10,217.3
	Other			\$ 0.0				\$ 0.0
FY 2007 Projected	State							
	Federal							
	Other							
FY 2008 Projected	State							
	Federal							
	Other							
FY 2009-2011 Projected	State							
	Federal							
	Other							
Total Projected	State			\$ 8,459.5	\$ 3,719.5			\$ 4,740.0
	Federal			\$ 10,999.2	\$ 781.9			\$ 10,217.3
	Other			\$ 0.0	\$ 0.0			\$ 0.0
Total All Funds		\$ 15,948.7	\$ 19,458.7	\$ 19,458.7	\$ 4,501.4	\$ 347.2	\$ 4,154.2	\$ 14,957.2

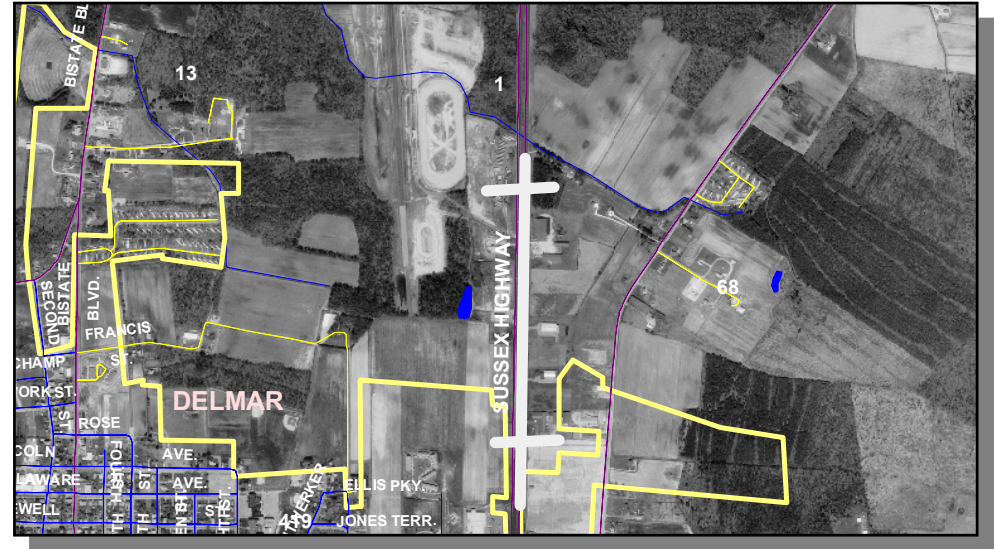
US 13, SUSSEX HIGHWAY, AND SR404 INTERSECTION REALIGNMENT AND BRIDGEVILLE SERVICE ROADS (CONTINUED)**PROJECT TIMELINE INFORMATION**

Project #	Description	Phase	Funding Schedule	Current Estimate	Prior Years	FY 2005	FY 2006	FY 2007	FY 2008	FY 2009 -2011
	US 13, Sussex Highway, and SR404 Intersection Realignment and Bridgeville Service Roads									
22-124-06	US 13, Bridgeville Service Roads	PE	80% FHWA	\$ 1,100.0	\$ 1,100.0	\$ 0.0	\$ 0.0	\$ 0.0	\$ 0.0	\$ 0.0
20-009-01		RW	100% ST	5,709.7	3,499.7	0.0	2,210.0	0.0	0.0	0.0
		C	80% FHWA	12,649.0	149.0	0.0	12,500.0	0.0	0.0	0.0
	Total All Funds			\$ 19,458.7	\$ 4,748.7	\$ 0.0	\$ 14,710.0	\$ 0.0	\$ 0.0	\$ 0.0

US 13, SUSSEX HIGHWAY, DELMAR SERVICE ROAD [Project No. 22-124-03]

PROJECT SCOPE/DESCRIPTION: This project consists of the construction of a connector road from US 13 to S 68, Old Stage Road and median improvements along US 13 including removal of the existing left-turn lane and crossover into State Line Plaza; adding left-turn lanes; channelizing the crossover at Delmar Business Park; and channelization of the crossover north of Delmar Business Park.

PROJECT JUSTIFICATION: The connector road will create/enhance the local road network by creating access between properties without the use of US 13. The intersection and median improvements will improve access management and circulation for developments along US 13.



County:	Sussex
Municipality:	Delmar
Funding Program:	Road System – Collectors
Functional Category:	Management
Representative District:	40
Senatorial District:	21



US 13, SUSSEX HIGHWAY, DELMAR SERVICE ROAD (CONTINUED)**PROJECT FUNDING INFORMATION**

Project	Funding Type	Original Estimate	Current Estimate	Authorization	Committed as of 12/31/04	Expended as of 12/31/04	Committed Unexpended as of 12/31/04	Authorization Available
US 13, Sussex Highway Delmar Service Road		\$ 2,358.6						
Prior Years	State			\$ 1,606.8	\$ 1,559.0	\$ 488.3	\$ 1,070.7	\$ 47.8
	Federal			\$ 751.8	\$ 0.0	\$ 0.0	\$ 0.0	\$ 751.8
	Other			\$ 0.0	\$ 0.0	\$ 0.0	\$ 0.0	\$ 0.0
FY 2005	State		\$ 2,358.6	\$ 0.0	\$ 47.8	\$ 0.0	\$ 47.8	\$ 0.0
	Federal			\$ 0.0	\$ 0.0	\$ 0.0	\$ 0.0	\$ 751.8
	Other			\$ 0.0	\$ 0.0	\$ 0.0	\$ 0.0	\$ 0.0
FY 2006 Request	State							
	Federal							
	Other							
FY 2007 Projected	State							
	Federal							
	Other							
FY 2008 Projected	State							
	Federal							
	Other							
FY 2009-2011 Projected	State							
	Federal							
	Other							
Total Projected	State			\$ 1,606.8	\$ 1,606.8			\$ 0.0
	Federal			\$ 751.8	\$ 0.0			\$ 751.8
	Other			\$ 0.0	\$ 0.0			\$ 0.0
Total All Funds		\$ 2,358.6	\$ 2,358.6	\$ 2,358.6	\$ 1,606.8	\$ 488.3	\$ 1,118.5	\$ 751.8

US 13, SUSSEX HIGHWAY, DELMAR SERVICE ROAD (CONTINUED)**PROJECT TIMELINE INFORMATION**

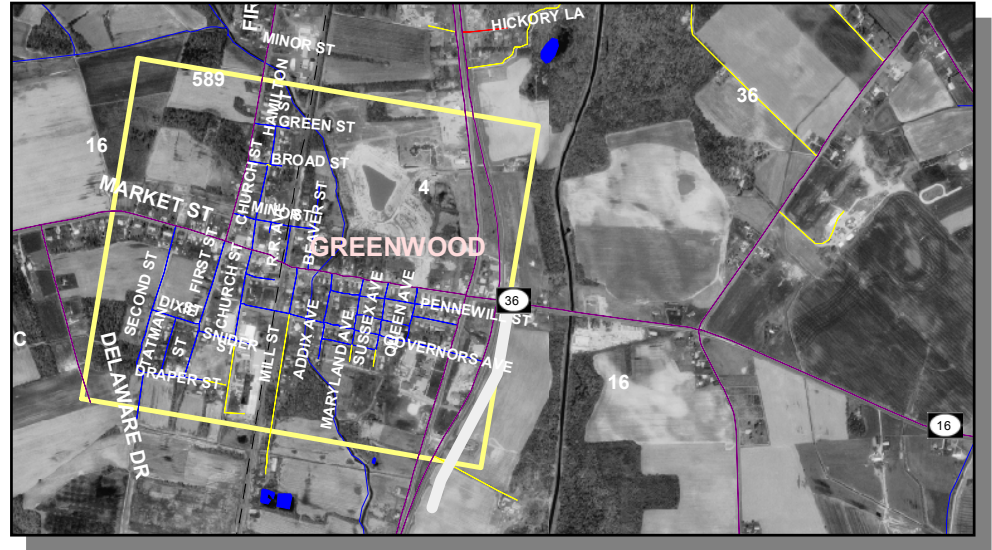
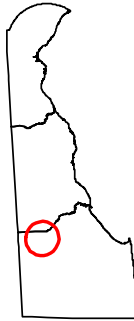
Project #	Description	Phase	Funding Schedule	Current Estimate	Prior Years	FY 2005	FY 2006	FY 2007	FY 2008	FY 2009 -2011
22-124-03	US 13, Sussex Highway Delmar Service Road	PE, RW, C	100% ST	\$ 1,000.0	\$ 1,000.0	\$ 0.0	\$ 0.0	\$ 0.0	\$ 0.0	\$ 0.0
24-124-03		RW	100% ST	418.8	418.8	0.0	0.0	0.0	0.0	0.0
		PE, RW, C	80% FHWA	939.8	939.8	0.0	0.0	0.0	0.0	0.0
	Total All Funds			\$ 2,358.6	\$ 2,358.6	\$ 0.0	\$ 0.0	\$ 0.0	\$ 0.0	\$ 0.0

US 13, SUSSEX HIGHWAY, GREENWOOD SERVICE ROAD [Project No. 22-124-05]

PROJECT SCOPE/DESCRIPTION: This project includes the construction of a service road parallel to US 13, from south of the CHEER Center to SR 16.

PROJECT JUSTIFICATION: This road will provide alternate access for the multiple planned developments along US 13 and improve the local road network to help preserve the capacity on US 13 to function as a regional arterial highway.

County:	Sussex
Municipality:	Greenwood
Funding Program:	Road System – Collectors
Functional Category:	Management
Representative District:	35
Senatorial District:	19



US 13, SUSSEX HIGHWAY, GREENWOOD SERVICE ROAD (CONTINUED)**PROJECT FUNDING INFORMATION**

Project	Funding Type	Original Estimate	Current Estimate	Authorization	Committed as of 12/31/04	Expended as of 12/31/04	Committed Unexpended as of 12/31/04	Authorization Available
US 13, Sussex Highway, Greenwood Service Road		\$ 2,443.2						
Prior Years	State			\$ 2,443.2	\$ 2,443.2	\$ 63.9	\$ 2,379.3	\$ 0.0
	Federal			\$ 0.0	\$ 0.0	\$ 0.0	\$ 0.0	\$ 0.0
	Other			\$ 0.0	\$ 0.0	\$ 0.0	\$ 0.0	\$ 0.0
FY 2005	State		\$ 2,443.2	\$ 0.0	\$ 0.0	\$ 0.0	\$ 0.0	\$ 0.0
	Federal			\$ 0.0	\$ 0.0	\$ 0.0	\$ 0.0	\$ 0.0
	Other			\$ 0.0	\$ 0.0	\$ 0.0	\$ 0.0	\$ 0.0
FY 2006 Request	State							
	Federal							
	Other							
FY 2007 Projected	State							
	Federal							
	Other							
FY 2008 Projected	State							
	Federal							
	Other							
FY 2009-2011 Projected	State							
	Federal							
	Other							
Total Projected	State			\$ 2,443.2	\$ 2,443.2			\$ 0.0
	Federal			\$ 0.0	\$ 0.0			\$ 0.0
	Other			\$ 0.0	\$ 0.0			\$ 0.0
Total All Funds		\$ 2,443.2	\$ 2,443.2	\$ 2,443.2	\$ 2,443.2	\$ 63.9	\$ 2,379.3	\$ 0.0

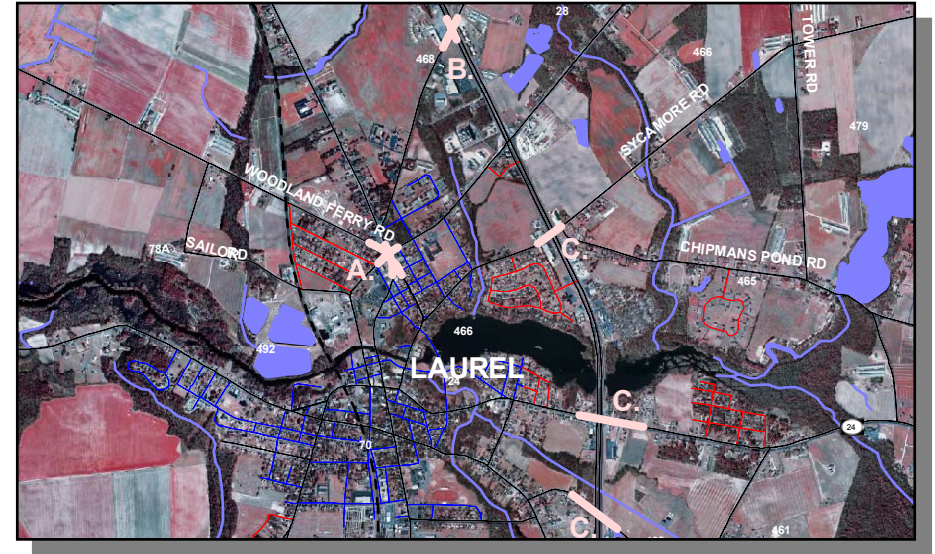
US 13, SUSSEX HIGHWAY, GREENWOOD SERVICE ROAD (CONTINUED)**PROJECT TIMELINE INFORMATION**

Project #	Description	Phase	Funding Schedule	Current Estimate	Prior Years	FY 2005	FY 2006	FY 2007	FY 2008	FY 2009 -2011
22-124-05	US 13, Sussex Highway, Greenwood Service Road	PE, C	100% ST	\$ 2,338.2	\$ 2,338.2	\$ 0.0	\$ 0.0	\$ 0.0	\$ 0.0	\$ 0.0
		RW	100% ST	105.0	105.0	0.0	0.0	0.0	0.0	0.0
	Total All Funds			\$ 2,443.2	\$ 2,443.2	\$ 0.0	\$ 0.0	\$ 0.0	\$ 0.0	\$ 0.0

US 13, SUSSEX HIGHWAY, LAUREL INTERSECTIONS IMPROVEMENTS [Project No. 22-124-01]

PROJECT SCOPE/DESCRIPTION: The Laurel intersections improvements are comprised of three projects listed below:

- A. **Laurel Five Points [Project No. 22-124-02]** – This project includes adding curbing (Brooklyn Avenue to US 9, County Seat Highway on both sides of the roadway and at each of the corners at the intersection); adding/replacing sidewalk at the intersection; increasing the turning radius from northbound Central Avenue onto eastbound Georgetown Road; and increasing the turning radius from southbound Central Avenue onto Woodland Ferry Road. Minimal right of way will be required and there will be two utility relocations and two signal pole relocations.
- B. **US 13 and S468, Discount Land Road [Project No. 22-124-01]** – This project includes median channelization at the intersection of US 13, Sussex Highway and S468, Discount Land Road north of Laurel. The work will involve: 1) adding concrete islands to channelize the left-turn movement from US 13, Sussex Highway onto S468, Discount Land Road; and 2) resurfacing on S468, Discount Land Road 200 feet from US 13, Sussex Highway along both approaches. All work will take place within the existing right of way, and there will be no drainage improvements or utility relocations.
- C. **US 13, Laurel Intersections Improvements [Project No. 22-124-04]** – This project consists of increasing the length of the existing right-turn lanes on eastbound and westbound approaches of US 9, County Seat Highway; adding left-turn lanes on the eastbound and westbound approaches of S466, Delaware Avenue; and removing split phasing from the signal, adding left-turn lanes on the eastbound and westbound approaches of SR 24, and adding a northbound acceleration lane from S462, Trussum Pond Road to US 13, Sussex Highway. Extensive pavement rehabilitation will be done at the intersections of US 13 and US 9, S466, SR 24, and S462, Trussum Pond Road to correct rutting problems. In addition, US 13 will get a two-inch mill and overlay between these intersections.



PROJECT JUSTIFICATION: These intersection improvements will provide additional corridor capacity and improve safety in all the locations. The work at Five Points was recommended improvements from the Laurel Truck Route Study.

County:	Sussex
Municipality:	Laurel
Funding Program:	Road System – Collectors
Functional Category:	Management
Representative District:	40
Senatorial District:	21



*US 13, SUSSEX HIGHWAY, LAUREL INTERSECTIONS IMPROVEMENTS (CONTINUED)***PROJECT FUNDING INFORMATION**

Project	Funding Type	Original Estimate	Current Estimate	Authorization	Committed as of 12/31/04	Expended as of 12/31/04	Committed Unexpended as of 12/31/04	Authorization Available
US 13, Sussex Highway, Laurel Intersections Improvements		\$ 4,801.5						
Prior Years	State			\$ 3,266.5	\$ 2,470.9	\$ 699.9	\$ 1,771.0	\$ 795.6
	Federal			\$ 0.0	\$ 0.0	\$ 0.0	\$ 0.0	\$ 0.0
	Other			\$ 0.0	\$ 0.0	\$ 0.0	\$ 0.0	\$ 0.0
FY 2005	State		\$ 5,012.4	\$ 1,745.9	\$ 0.0	\$ 0.0	\$ 0.0	\$ 2,541.5
	Federal			\$ 0.0	\$ 0.0	\$ 0.0	\$ 0.0	\$ 0.0
	Other			\$ 0.0	\$ 0.0	\$ 0.0	\$ 0.0	\$ 0.0
FY 2006 Request	State							
	Federal							
	Other							
FY 2007 Projected	State							
	Federal							
	Other							
FY 2008 Projected	State							
	Federal							
	Other							
FY 2009-2011 Projected	State							
	Federal							
	Other							
Total Projected	State			\$ 5,012.4	\$ 2,470.9			\$ 2,541.5
	Federal			\$ 0.0	\$ 0.0			\$ 0.0
	Other			\$ 0.0	\$ 0.0			\$ 0.0
Total All Funds		\$ 4,801.5	\$ 5,012.4	\$ 5,012.4	\$ 2,470.9	\$ 699.9	\$ 1,771.0	\$ 2,541.5

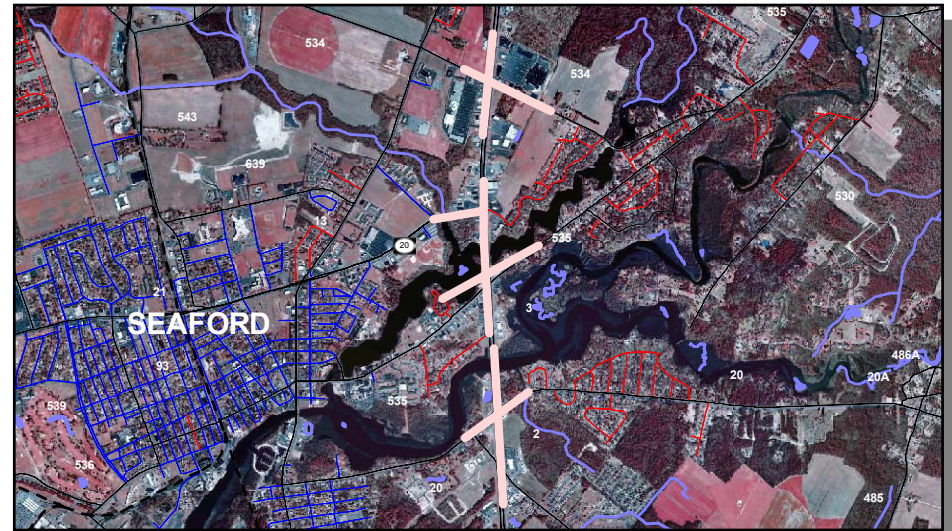
US 13, SUSSEX HIGHWAY, LAUREL INTERSECTIONS IMPROVEMENTS (CONTINUED)**PROJECT TIMELINE INFORMATION**

Project #	Description	Phase	Funding Schedule	Current Estimate	Prior Years	FY 2005	FY 2006	FY 2007	FY 2008	FY 2009 -2011
	US 13, Sussex Highway, Laurel Intersections Improvements	PE, RW, C	100% ST	\$ 1,159.5	\$ 1,159.5	\$ 0.0	\$ 0.0	\$ 0.0	\$ 0.0	\$ 0.0
		PE	100% ST	20.0	20.0	0.0	0.0	0.0	0.0	0.0
22-124-02	A. Laurel Five-Points	PE, RW	100% ST	137.0	137.0	0.0	0.0	0.0	0.0	0.0
		C	100% ST	423.0	423.0	0.0	0.0	0.0	0.0	0.0
22-124-01	B. US 13 and S468, Discount Land Road	PE	100% ST	0.0	0.0	0.0	0.0	0.0	0.0	0.0
		C	100% ST	54.2	54.2	0.0	0.0	0.0	0.0	0.0
		C	100% ST	216.8	216.8	0.0	0.0	0.0	0.0	0.0
22-124-04	C. US 13, Laurel Intersections Improvements	PE	100% ST	339.0	339.0	0.0	0.0	0.0	0.0	0.0
		RW	100% ST	249.0	249.0	0.0	0.0	0.0	0.0	0.0
		C	100% ST	2,413.9	668.0	1,745.9	0.0	0.0	0.0	0.0
	Total All Funds			\$ 5,012.4	\$ 3,266.5	\$ 1,745.9	\$ 0.0	\$ 0.0	\$ 0.0	\$ 0.0

US 13, SUSSEX HIGHWAY, SEAFORD INTERSECTION IMPROVEMENTS [Project No. 23-124-01]

PROJECT SCOPE/DESCRIPTION: These improvements have been expanded from the original conception on US 13 to include the following sections:

- **US 13, Sussex Highway Intersection Improvements [Project No. 24-124-01]** at S534, Herring Run Road/Tharp Road, SR 20, Stein Highway, S535, Middleford Road, and S 20, Concord Road will include modifications to the signal timing/phasing and addition of separate left-turn lanes.
- The project includes removal of pavement at the **US 13, Sussex Highway /US 13A, Bridgeville Highway/S 46, Old Furnace Road Intersection [Project No. 23-124-01]** to improve safety and remove duplicate traffic movements. The high-speed entrance to US 13A, Bridgeville Highway southbound from US 13, Sussex Highway will be replaced by a low speed, rights-in/rights-out to the south of S 46, Old Furnace Road. Additionally, access to US 13A, Bridgeville Highway from S 46, Old Furnace Road will be provided by a connector road to the west of US 13A, Bridgeville Highway.



US 13, SUSSEX HIGHWAY, SEAFORD INTERSECTION IMPROVEMENTS (CONTINUED)

- **US 13 Ross Industrial Park Access** – In the FY 2005 Capital Bond Bill, the following language was written for this project, and corresponding project development funds were allocated. The department is authorized to enter into such agreements with the City of Seaford or any such employer that the City is successful in attracting as are necessary and convenient for the planning, design, construction, and/or financing of any such improvements to the transportation system. The department shall provide a report of its activities in this regard, in writing, to the General Assembly and the Governor by May 1, 2005.

PROJECT JUSTIFICATION: The intersection improvements will provide additional capacity and improve safety at these intersections. In addition, the US 13, Sussex Highway/S 46, Old Furnace Road intersection section of roadway was listed in the 1998 Highway Safety Improvement Program (HSIP) as a site having a high rate of accidents.

County:	Sussex
Municipality:	Seaford
Funding Program:	Road System – Collectors
Functional Category:	Management
Representative District:	35, 39
Senatorial District:	19, 21



US 13, SUSSEX HIGHWAY, SEAFORD INTERSECTION IMPROVEMENTS (CONTINUED)**PROJECT FUNDING INFORMATION**

Project	Funding Type	Original Estimate	Current Estimate	Authorization	Committed as of 12/31/04	Expended as of 12/31/04	Committed Unexpended as of 12/31/04	Authorization Available
US 13, Sussex Highway, Seaford Intersection Improvements		\$ 7,454.5						
Prior Years	State			\$ 5,376.5	\$ 3,143.4	\$ 333.9	\$ 2,809.5	\$ 2,233.1
	Federal			\$ 1,578.0	\$ 0.0	\$ 0.0	\$ 0.0	\$ 1,578.0
	Other			\$ 0.0	\$ 0.0	\$ 0.0	\$ 0.0	\$ 0.0
FY 2005	State		\$ 7,454.5	\$ 500.0	\$ 0.0	\$ 0.0	\$ 0.0	\$ 2,733.1
	Federal			\$ 0.0	\$ 0.0	\$ 0.0	\$ 0.0	\$ 1,578.0
	Other			\$ 0.0	\$ 0.0	\$ 0.0	\$ 0.0	\$ 0.0
FY 2006 Request	State							
	Federal							
	Other							
FY 2007 Projected	State							
	Federal							
	Other							
FY 2008 Projected	State							
	Federal							
	Other							
FY 2009-2011 Projected	State							
	Federal							
	Other							
Total Projected	State			\$ 5,876.5	\$ 3,143.4			\$ 2,733.1
	Federal			\$ 1,578.0	\$ 0.0			\$ 1,578.0
	Other			\$ 0.0	\$ 0.0			\$ 0.0
Total All Funds		\$ 7,454.5	\$ 7,454.5	\$ 7,454.5	\$ 3,143.4	\$ 333.9	\$ 2,809.5	\$ 4,311.1

US 13, SUSSEX HIGHWAY, SEAFORD INTERSECTION IMPROVEMENTS (CONTINUED)**PROJECT TIMELINE INFORMATION**

Project #	Description	Phase	Funding Schedule	Current Estimate	Prior Years	FY 2005	FY 2006	FY 2007	FY 2008	FY 2009 -2011
	US 13, Sussex Highway, Seaford Intersection Improvements									
24-124-01	US 13, Seaford Intersection Improvements	PE, RW, C	100% ST	\$ 1,800.0	\$ 1,800.0	\$ 0.0	\$ 0.0	\$ 0.0	\$ 0.0	\$ 0.0
23-124-01	US 13, Sussex Highway and US 13A, Bridgeville Highway, S 46, Old Furnace Road Intersection	PE	100% ST	382.0	382.0	0.0	0.0	0.0	0.0	0.0
		RW	100% ST	800.0	800.0	0.0	0.0	0.0	0.0	0.0
		C	100% ST	340.0	340.0	0.0	0.0	0.0	0.0	0.0
		C	100% ST	1,660.0	1,660.0	0.0	0.0	0.0	0.0	0.0
		C	80% FHWA	1,972.5	1,972.5	0.0	0.0	0.0	0.0	0.0
	US 13, Ross Industrial Park Access	PD	100% ST	500.0	0.0	500.0	0.0	0.0	0.0	0.0
	Total All Funds			\$ 7,454.5	\$ 6,954.5	\$ 500.0	\$ 0.0	\$ 0.0	\$ 0.0	\$ 0.0

US113, DUPONT BOULEVARD AND S36A, SEABURY AVENUE, MILFORD [Project No. 21-009-01]

PROJECT SCOPE/DESCRIPTION: This project will install channelization on the eastbound approach and within the median opening to prohibit eastbound through movements, westbound through movements, and northbound left-turns.

PROJECT JUSTIFICATION: This major intersection was identified through the 1998 Highway Safety Improvement Program (HSIP).

County:	Sussex
Municipality:	Milford
Funding Program:	Road System - Collectors
Functional Category:	Management
Representative District:	36
Senatorial District:	18



US113, DUPONT BOULEVARD AND S36A, SEABURY AVENUE, MILFORD (CONTINUED)**PROJECT FUNDING INFORMATION**

Project	Funding Type	Original Estimate	Current Estimate	Authorization	Committed as of 12/31/04	Expended as of 12/31/04	Committed Unexpended as of 12/31/04	Authorization Available
US113, DuPont Boulevard and S36A, Seabury Avenue, Milford		\$ 194.2						
Prior Years	State			\$ 65.3	\$ 65.3	\$ 43.0	\$ 22.3	\$ 0.0
	Federal			\$ 128.9	\$ 123.8	\$ 94.4	\$ 29.4	\$ 5.1
	Other			\$ 0.0	\$ 0.0	\$ 0.0	\$ 0.0	\$ 0.0
FY 2005	State		\$ 194.2	\$ 0.0	\$ 0.0	\$ 0.0	\$ 0.0	\$ 0.0
	Federal			\$ 0.0	\$ 0.0	\$ 0.0	\$ 0.0	\$ 5.1
	Other			\$ 0.0	\$ 0.0	\$ 0.0	\$ 0.0	\$ 0.0
FY 2006 Request	State							
	Federal							
	Other							
FY 2007 Projected	State							
	Federal							
	Other							
FY 2008 Projected	State							
	Federal							
	Other							
FY 2009-2011 Projected	State							
	Federal							
	Other							
Total Projected	State			\$ 65.3	\$ 65.3			\$ 0.0
	Federal			\$ 128.9	\$ 123.8			\$ 0.0
	Other			\$ 0.0	\$ 0.0			\$ 0.0
Total All Funds		\$ 194.2	\$ 194.2	\$ 194.2	\$ 189.1	\$ 137.4	\$ 51.7	\$ 0.0

US113, DUPONT BOULEVARD AND S36A, SEABURY AVENUE, MILFORD (CONTINUED)**PROJECT TIMELINE INFORMATION**

Project #	Description	Phase	Funding Schedule	Current Estimate	Prior Years	FY 2005	FY 2006	FY 2007	FY 2008	FY 2009 -2011
21-009-01	US 113, DuPont Boulevard and S36A, Seabury Avenue, Milford	PE	100% ST	\$ 51.0	\$ 51.0	\$ 0.0	\$ 0.0	\$ 0.0	\$ 0.0	\$ 0.0
		C	90% FHWA	143.2	143.2	0.0	0.0	0.0	0.0	0.0
	Total All Funds			\$ 194.2	\$ 194.2	\$ 0.0	\$ 0.0	\$ 0.0	\$ 0.0	\$ 0.0