

# ***ROAD SYSTEM***

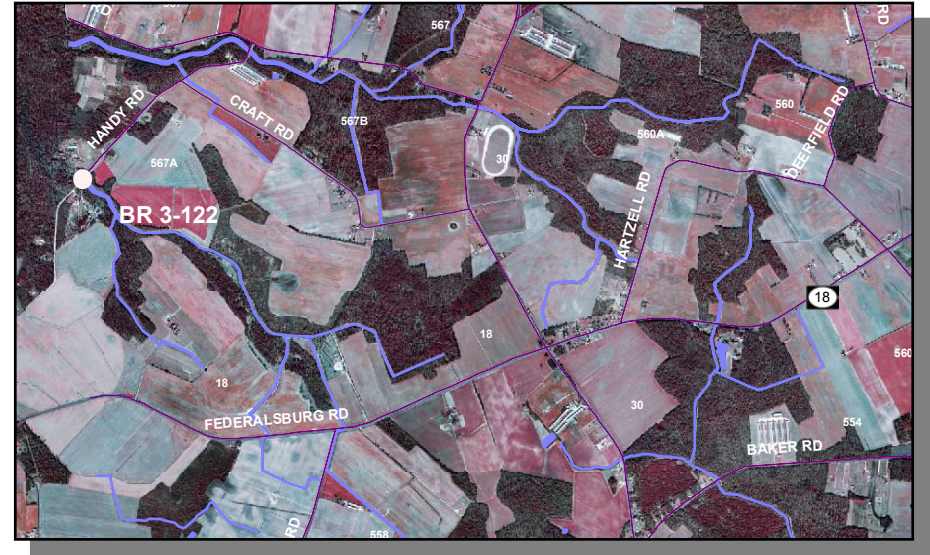
# ***BRIDGES***

***BR 3-122 ON S567A, HANDY ROAD OVER HOUSTON BRANCH [Project No. 24-073-02]***

**PROJECT SCOPE/DESCRIPTION:** This project will consist of replacing the existing pipes with a precast concrete rigid frame. Other work will include placing riprap for scour protection, reconstructing the approach roadways, and placing steel beam guardrail.

**PROJECT JUSTIFICATION:** The existing structure consists of three corrugated steel pipe culverts in very poor condition due mainly to the severe corrosion that is taking place throughout the pipe culvert. The bottoms of the pipes have deteriorated completely in several locations. The bridge currently ranks 17<sup>th</sup> out of 1,399 on the department's bridge deficiency list (via the bridge management program).

<b>County:</b>	Sussex
<b>Municipality:</b>	
<b>Funding Program:</b>	Road System – Bridges
<b>Functional Category:</b>	Preservation
<b>Representative District:</b>	35
<b>Senatorial District:</b>	19



***BR 3-122 ON S567A, HANDY ROAD OVER HOUSTON BRANCH (CONTINUED)***

***Bridge 3-122 on S567A, Handy Road over Houston Branch***



***Inside Bridge 3-122***



**BR 3-122 ON S567A, HANDY ROAD OVER HOUSTON BRANCH (CONTINUED)****PROJECT FUNDING INFORMATION**

Project	Funding Type	Original Estimate	Current Estimate	Authorization	Committed as of 12/31/04	Expended as of 12/31/04	Committed Unexpended as of 12/31/04	Authorization Available
Br 3-122 on S567A, Handy Road over Houston Branch		\$ 575.8						
Prior Years	State			\$ 73.4	\$ 73.4	\$ 1.1	\$ 72.3	\$ 0.0
	Federal			\$ 293.6	\$ 46.8	\$ 4.4	\$ 42.4	\$ 246.8
	Other			\$ 0.0	\$ 0.0	\$ 0.0	\$ 0.0	\$ 0.0
FY 2005	State		\$ 869.8	\$ 3.3	\$ 2.9	\$ 0.0	\$ 2.9	\$ 0.4
	Federal			\$ 13.2	\$ 0.0	\$ 0.0	\$ 0.0	\$ 260.0
	Other			\$ 0.0	\$ 0.0	\$ 0.0	\$ 0.0	\$ 0.0
FY 2006 Request	State			\$ 97.3				\$ 97.7
	Federal			\$ 389.0				\$ 649.0
	Other			\$ 0.0				\$ 0.0
FY 2007 Projected	State							
	Federal							
	Other							
FY 2008 Projected	State							
	Federal							
	Other							
FY 2009-2011 Projected	State							
	Federal							
	Other							
Total Projected	State			\$ 174.0	\$ 76.3			\$ 97.7
	Federal			\$ 695.8	\$ 46.8			\$ 649.0
	Other			\$ 0.0	\$ 0.0			\$ 0.0
Total All Funds		\$ 575.8	\$ 869.8	\$ 869.8	\$ 123.1	\$ 5.5	\$ 117.6	\$ 746.7

**BR 3-122 ON S567A, HANDY ROAD OVER HOUSTON BRANCH (CONTINUED)****PROJECT TIMELINE INFORMATION**

Project #	Description	Phase	Funding Schedule	Current Estimate	Prior Years	FY 2005	FY 2006	FY 2007	FY 2008	FY 2009 -2011
24-073-02	<b>BR 3-122 on S567A, Handy Road over Houston Branch</b>	PE	80% FHWA	\$ 367.0	\$ 367.0	\$ 0.0	\$ 0.0	\$ 0.0	\$ 0.0	\$ 0.0
		RW	80% FHWA	16.5	0.0	16.5	0.0	0.0	0.0	0.0
		C	80% FHWA	486.3	0.0	0.0	486.3	0.0	0.0	0.0
	Total All Funds			\$ 869.8	\$ 367.0	\$ 16.5	\$ 486.3	\$ 0.0	\$ 0.0	\$ 0.0



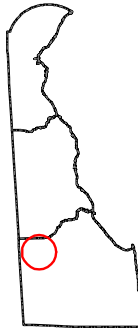
***BR 3-141 ON S583 OVER POLK BRANCH, NORTH OF BRIDGEVILLE [Project No. 23-073-02]***

**PROJECT SCOPE/DESCRIPTION:** This project will consist of replacing the existing structure with a precast concrete rigid frame. Other work will include placing riprap for scour protection, reconstructing the approach roadways, and placing steel beam guardrail.

**PROJECT JUSTIFICATION:** The existing structure is a two-cell concrete rigid frame in very poor condition. Heavy spalling and cracking is evidenced in the walls and the pier, with full section loss occurring at several locations. There is also evidence of settlement. This bridge was added to the program at the request of the Bridge Management Section after a recent inspection indicated that the structure was in poor condition and in need of replacement. The bridge currently ranks 163<sup>rd</sup> out of 1,399 on the department's bridge deficiency list (via the bridge management program).



<b>County:</b>	Sussex
<b>Municipality:</b>	
<b>Funding Program:</b>	Road System – Bridges
<b>Functional Category:</b>	Preservation
<b>Representative District:</b>	35
<b>Senatorial District:</b>	19



***BR 3-141 ON S583 OVER POLK BRANCH, NORTH OF BRIDGEVILLE (CONTINUED)***

***Bridge 3-141 on S583 Over Polk Branch***



***Inside Bridge 3-141***



**BR 3-141 ON S583 OVER POLK BRANCH, NORTH OF BRIDGEVILLE (CONTINUED)****PROJECT FUNDING INFORMATION**

Project	Funding Type	Original Estimate	Current Estimate	Authorization	Committed as of 12/31/04	Expended as of 12/31/04	Committed Unexpended as of 12/31/04	Authorization Available
BR 3-141 on S583 over Polk Branch, North of Bridgeville		\$ 670.0						
Prior Years	State			\$ 180.0	\$ 180.0	\$ 5.6	\$ 174.4	\$ 0.0
	Federal			\$ 72.0	\$ 72.0	\$ 22.6	\$ 49.4	\$ 0.0
	Other			\$ 0.0	\$ 0.0	\$ 0.0	\$ 0.0	\$ 0.0
FY 2005	State		\$ 832.0	\$ 116.0	\$ 116.0	\$ 0.0	\$ 116.0	\$ 0.0
	Federal			\$ 464.0	\$ 464.0	\$ 0.0	\$ 464.0	\$ 0.0
	Other			\$ 0.0	\$ 0.0	\$ 0.0	\$ 0.0	\$ 0.0
FY 2006 Request	State							
	Federal							
	Other							
FY 2007 Projected	State							
	Federal							
	Other							
FY 2008 Projected	State							
	Federal							
	Other							
FY 2009-2011 Projected	State							
	Federal							
	Other							
Total Projected	State			\$ 296.0	\$ 296.0			\$ 0.0
	Federal			\$ 536.0	\$ 536.0			\$ 0.0
	Other			\$ 0.0	\$ 0.0			\$ 0.0
Total All Funds		\$ 670.0	\$ 832.0	\$ 832.0	\$ 832.0	\$ 28.2	\$ 803.8	\$ 0.0



**BR 3-141 ON S583 OVER POLK BRANCH, NORTH OF BRIDGEVILLE (CONTINUED)****PROJECT TIMELINE INFORMATION**

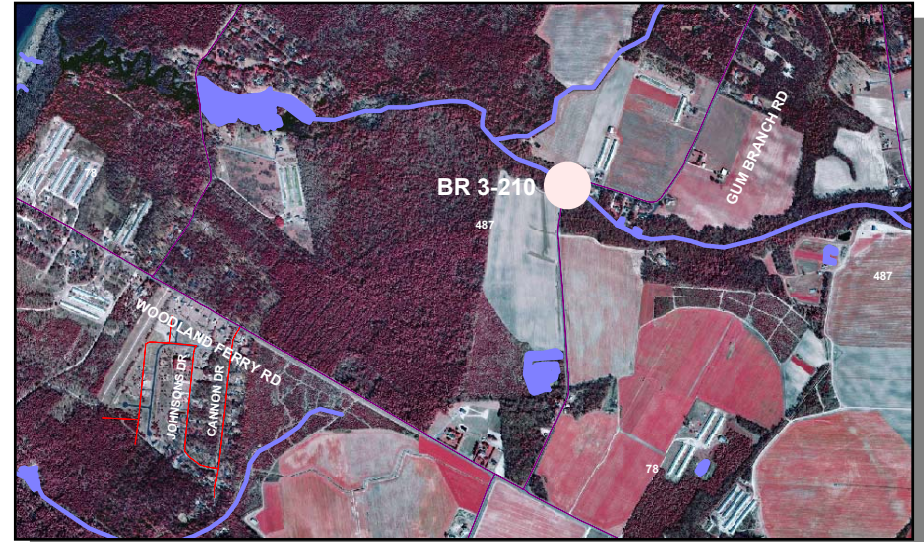
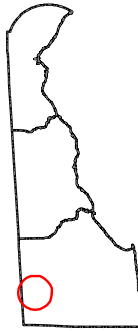
Project #	Description	Phase	Funding Schedule	Current Estimate	Prior Years	FY 2005	FY 2006	FY 2007	FY 2008	FY 2009 -2011
23-073-02	<b>BR 3-141 on S583 over Polk Branch, North of Bridgeville</b>	PE	80% FHWA	\$ 90.0	\$ 90.0	\$ 0.0	\$ 0.0	\$ 0.0	\$ 0.0	\$ 0.0
		PE	100% ST	162.0	162.0	0.0	0.0	0.0	0.0	0.0
		RW	80% FHWA	11.0	0.0	11.0	0.0	0.0	0.0	0.0
		C	80% FHWA	569.0	0.0	569.0	0.0	0.0	0.0	0.0
	Total All Funds			\$ 832.0	\$ 252.0	\$ 580.0	\$ 0.0	\$ 0.0	\$ 0.0	\$ 0.0

**BR 3-210 ON S487, GUM BRANCH ROAD OVER GUM BRANCH [Project No. 23-073-01]**

**PROJECT SCOPE/DESCRIPTION:** This project will consist of replacing the existing pipes with a precast concrete box culvert or pipes. Other work shall include placing riprap for scour protection, reconstructing the approach roadways, and placing steel beam guardrail as needed.

**PROJECT JUSTIFICATION:** The existing structure consists of two elliptical corrugated metal pipes in poor condition due to excessive corroding and locations of complete loss of section. The bridge currently ranks 163<sup>rd</sup> out of 1,399 on the department's bridge deficiency list (via the bridge management program).

<b>County:</b>	Sussex
<b>Municipality:</b>	
<b>Funding Program:</b>	Road System – Bridges
<b>Functional Category:</b>	Preservation
<b>Representative District:</b>	39
<b>Senatorial District:</b>	21

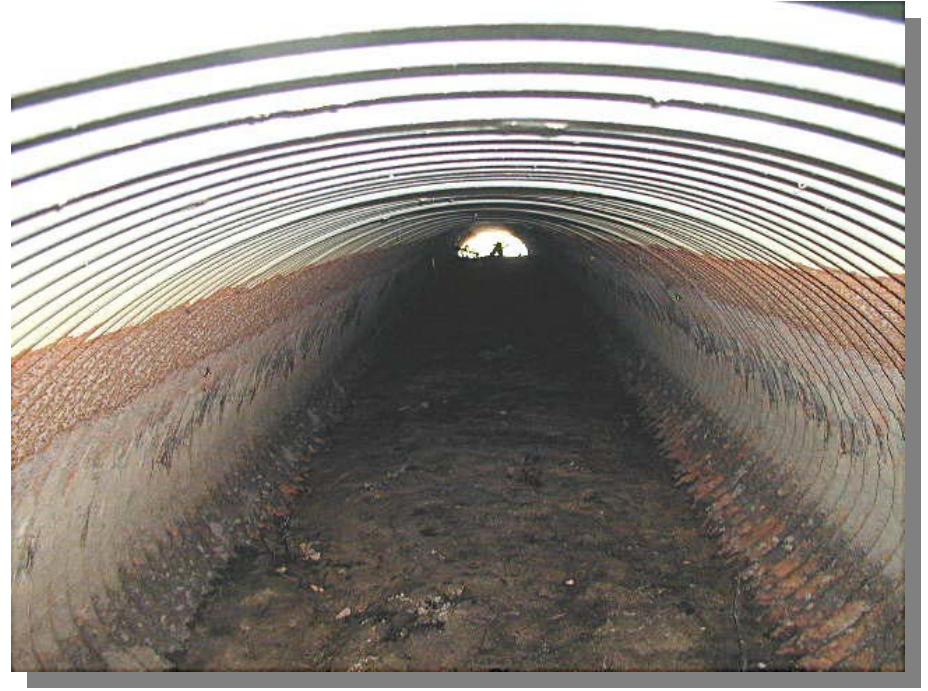


***BR 3-210 ON S487, GUM BRANCH ROAD OVER GUM BRANCH (CONTINUED)***

***Bridge 3-210 on S487, Gum Branch Road Over Gum Branch***



***Inside Bridge 3-210***



**BR 3-210 ON S487, GUM BRANCH ROAD OVER GUM BRANCH (CONTINUED)****PROJECT FUNDING INFORMATION**

Project	Funding Type	Original Estimate	Current Estimate	Authorization	Committed as of 12/31/04	Expended as of 12/31/04	Committed Unexpended as of 12/31/04	Authorization Available
BR 3-210 on S487, Gum Branch Road over Gum Branch		\$ 161.0						
Prior Years	State			\$ 86.0	\$ 86.0	\$ 15.8	\$ 70.2	\$ 0.0
	Federal			\$ 0.0	\$ 0.0	\$ 0.0	\$ 0.0	\$ 0.0
	Other			\$ 0.0	\$ 0.0	\$ 0.0	\$ 0.0	\$ 0.0
FY 2005	State		\$ 161.0	\$ 75.0	\$ 0.0	\$ 0.0	\$ 0.0	\$ 75.0
	Federal			\$ 0.0	\$ 0.0	\$ 0.0	\$ 0.0	\$ 0.0
	Other			\$ 0.0	\$ 0.0	\$ 0.0	\$ 0.0	\$ 0.0
FY 2006 Request	State							
	Federal							
	Other							
FY 2007 Projected	State							
	Federal							
	Other							
FY 2008 Projected	State							
	Federal							
	Other							
FY 2009-2011 Projected	State							
	Federal							
	Other							
Total Projected	State			\$ 161.0	\$ 86.0			\$ 75.0
	Federal			\$ 0.0	\$ 0.0			\$ 0.0
	Other			\$ 0.0	\$ 0.0			\$ 0.0
Total All Funds		\$ 161.0	\$ 161.0	\$ 161.0	\$ 86.0	\$ 15.8	\$ 70.2	\$ 75.0



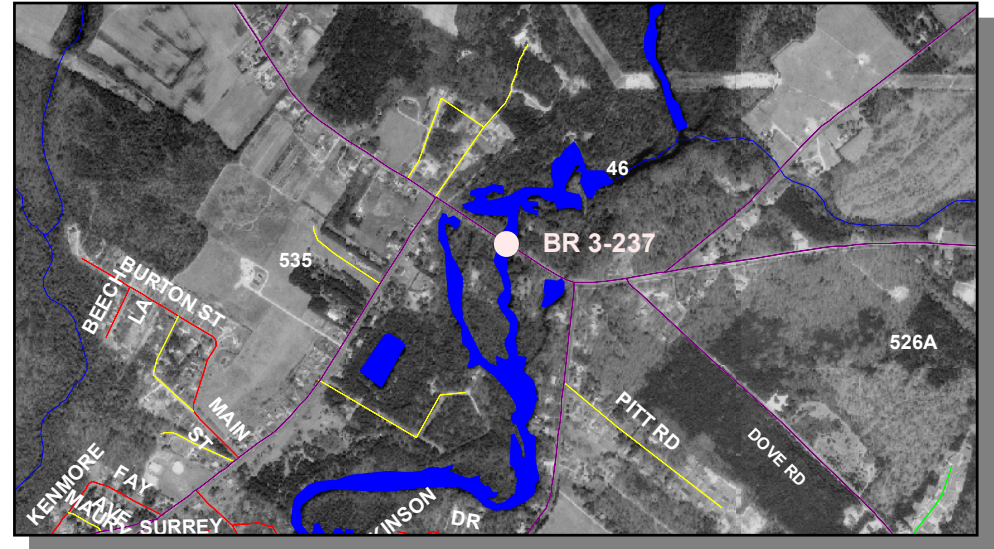
**BR 3-210 ON S487, GUM BRANCH ROAD OVER GUM BRANCH (CONTINUED)****PROJECT TIMELINE INFORMATION**

Project #	Description	Phase	Funding Schedule	Current Estimate	Prior Years	FY 2005	FY 2006	FY 2007	FY 2008	FY 2009 -2011
23-073-01	<b>BR 3-210 on S487, Gum Branch Road over Gum Branch</b>	PE	100% ST	\$ 86.0	\$ 86.0	\$ 0.0	\$ 0.0	\$ 0.0	\$ 0.0	\$ 0.0
		RW	100% ST	0.0	0.0	0.0	0.0	0.0	0.0	0.0
		C	80% FHWA	0.0	0.0	0.0	0.0	0.0	0.0	0.0
	Maintenance	C	100% ST	75.0	0.0	75.0	0.0	0.0	0.0	0.0
	Total All Funds			\$ 161.0	\$ 86.0	\$ 75.0	\$ 0.0	\$ 0.0	\$ 0.0	\$ 0.0

***BR 3-237 ON S 46, ELKS ROAD OVER GRAVELLY BRANCH, SEAFORD [Project No. 21-076-01]***

**PROJECT SCOPE/DESCRIPTION:** This bridge was built in 1919 and has been designated as a historic bridge. It is finished with concrete parapets in incised rectangular panels and is supported on concrete abutments with U-shaped concrete wing walls. Flared timber wing walls have been added in an effort to arrest erosion of the embankments. The improvements will include partial replacement of the bridge on S 46, Elks Road by repairing spalls on the existing concrete arch; widening the arch with matching shape and parapets and installing guardrails at bridge approaches. The existing roadway section will also be widened.

**PROJECT JUSTIFICATION:** This bridge is functionally obsolete and ranks 61<sup>st</sup> out of 1,399 on the department's bridge deficiency list (via the bridge management program). Bridge inspection reports indicate that sections of the concrete arch are delaminated with exposed reinforcements. The report also shows that spalls are located on the arch and rails, and several spalls on the railing have exposed rebar. Scour is present on the south side of the arch, extending in from the channel.



<b>County:</b>	Sussex
<b>Municipality:</b>	
<b>Funding Program:</b>	Road System – Bridges
<b>Functional Category:</b>	Preservation
<b>Representative District:</b>	35, 39
<b>Senatorial District:</b>	19



***BR 3-237 ON S 46, ELKS ROAD OVER GRAVELLY BRANCH, SEAFORD (CONTINUED)***

***Bridge 3-237***



**BR 3-237 ON S 46, ELKS ROAD OVER GRAVELLY BRANCH, SEAFORD (CONTINUED)****PROJECT FUNDING INFORMATION**

Project	Funding Type	Original Estimate	Current Estimate	Authorization	Committed as of 12/31/04	Expended as of 12/31/04	Committed Unexpended as of 12/31/04	Authorization Available
BR 3-237 on S 46, Elks Road over Gravelly Branch, Seaford		\$ 1,212.0						
Prior Years	State			\$ 397.6	\$ 99.3	\$ 89.6	\$ 9.7	\$ 298.3
	Federal			\$ 814.4	\$ 0.0	\$ 0.0	\$ 0.0	\$ 814.4
	Other			\$ 0.0	\$ 0.0	\$ 0.0	\$ 0.0	\$ 0.0
FY 2005	State		\$ 1,212.0	\$ 0.0	\$ 0.0	\$ 0.0	\$ 0.0	\$ 298.3
	Federal			\$ 0.0	\$ 0.0	\$ 0.0	\$ 0.0	\$ 814.4
	Other			\$ 0.0	\$ 0.0	\$ 0.0	\$ 0.0	\$ 0.0
FY 2006 Request	State							
	Federal							
	Other							
FY 2007 Projected	State							
	Federal							
	Other							
FY 2008 Projected	State							
	Federal							
	Other							
FY 2009-2011 Projected	State							
	Federal							
	Other							
Total Projected	State			\$ 397.6	\$ 99.3			\$ 298.3
	Federal			\$ 814.4	\$ 0.0			\$ 814.4
	Other			\$ 0.0	\$ 0.0			\$ 0.0
Total All Funds		\$ 1,212.0	\$ 1,212.0	\$ 1,212.0	\$ 99.3	\$ 89.6	\$ 9.7	\$ 1,112.7



**BR 3-237 ON S 46, ELKS ROAD OVER GRAVELLY BRANCH, SEAFORD (CONTINUED)****PROJECT TIMELINE INFORMATION**

Project #	Description	Phase	Funding Schedule	Current Estimate	Prior Years	FY 2005	FY 2006	FY 2007	FY 2008	FY 2009 -2011
21-076-01	<b>BR 3-237 on S 46, Elks Road over Gravelly Branch, Seaford</b>	PE	100% ST	\$ 150.0	\$ 150.0	\$ 0.0	\$ 0.0	\$ 0.0	\$ 0.0	\$ 0.0
		RW	100% ST	44.0	44.0	0.0	0.0	0.0	0.0	0.0
		C	80% FHWA	1,018.0	1,018.0	0.0	0.0	0.0	0.0	0.0
	Total All Funds			\$ 1,212.0	\$ 1,212.0	\$ 0.0	\$ 0.0	\$ 0.0	\$ 0.0	\$ 0.0

**BR 3-328 ON S454, OAK BRANCH ROAD OVER FIGGS DITCH, EAST OF DELMAR [Project No. 24-073-03]**

**PROJECT SCOPE/DESCRIPTION:** This project will consist of replacing the existing metal pipes with a precast concrete box culvert that meets current accepted roadway and bridge design criteria. Other work shall include placing riprap at the inlet and outlet for scour protection, reconstructing the approach roadway and placing steel beam guardrail.

**PROJECT JUSTIFICATION:** The existing structure consists of three corrugated metal elliptical pipes in poor condition. Some distortion in one of the pipes could lead to future failure of the roadway and must be addressed. Some corrosion is also present in all three cells. This bridge currently ranks 303<sup>rd</sup> out of 1,399 on the department's bridge deficiency list (via the bridge management program).

<b>County:</b>	Sussex
<b>Municipality:</b>	
<b>Funding Program:</b>	Road System – Bridges
<b>Functional Category:</b>	Preservation
<b>Representative District:</b>	40
<b>Senatorial District:</b>	21

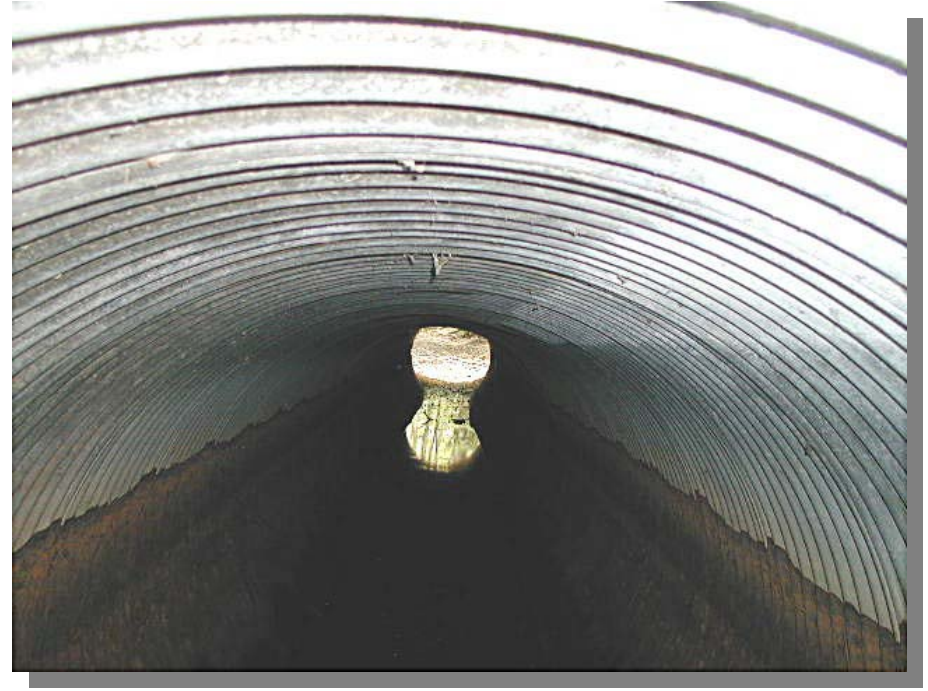


***BR 3-328 ON S454, OAK BRANCH ROAD OVER FIGGS DITCH, EAST OF DELMAR (CONTINUED)***

***Bridge 3-328 on S454, Oak Branch Road Over Figgs Ditch***



***Inside Bridge 3-328***



**BR 3-328 ON S454, OAK BRANCH ROAD OVER FIGGS DITCH, EAST OF DELMAR (CONTINUED)****PROJECT FUNDING INFORMATION**

Project	Funding Type	Original Estimate	Current Estimate	Authorization	Committed as of 12/31/04	Expended as of 12/31/04	Committed Unexpended as of 12/31/04	Authorization Available
BR 3-328 on S454, Oak Branch Road over Figgs Ditch, East of Delmar		\$ 418.9						
Prior Years	State			\$ 71.1	\$ 71.1	\$ 8.2	\$ 62.9	\$ 0.0
	Federal			\$ 56.8	\$ 47.5	\$ 33.0	\$ 14.5	\$ 9.3
	Other			\$ 0.0	\$ 0.0	\$ 0.0	\$ 0.0	\$ 0.0
FY 2005	State		\$ 475.8	\$ 4.8	\$ 4.7	\$ 0.0	\$ 4.7	\$ 0.1
	Federal			\$ 19.4	\$ 0.0	\$ 0.0	\$ 0.0	\$ 28.7
	Other			\$ 0.0	\$ 0.0	\$ 0.0	\$ 0.0	\$ 0.0
FY 2006 Request	State			\$ 64.7				\$ 64.8
	Federal			\$ 259.0				\$ 287.7
	Other			\$ 0.0				\$ 0.0
FY 2007 Projected	State							
	Federal							
	Other							
FY 2008 Projected	State							
	Federal							
	Other							
FY 2009-2011 Projected	State							
	Federal							
	Other							
Total Projected	State			\$ 140.6	\$ 75.8			\$ 64.8
	Federal			\$ 335.2	\$ 47.5			\$ 287.7
	Other			\$ 0.0	\$ 0.0			\$ 0.0
Total All Funds		\$ 418.9	\$ 475.8	\$ 475.8	\$ 123.3	\$ 41.2	\$ 82.0	\$ 352.5



**BR 3-328 ON S454, OAK BRANCH ROAD OVER FIGGS DITCH, EAST OF DELMAR (CONTINUED)****PROJECT TIMELINE INFORMATION**

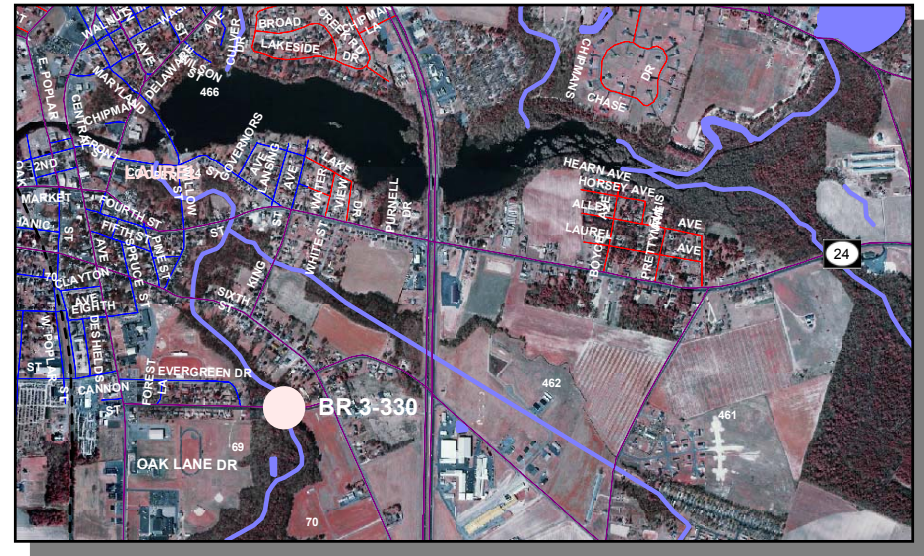
Project #	Description	Phase	Funding Schedule	Current Estimate	Prior Years	FY 2005	FY 2006	FY 2007	FY 2008	FY 2009 -2011
24-073-03	<b>BR 3-328 on S454, Oak Branch Road over Figgs Ditch, East of Delmar</b>	PE	80% FHWA	\$ 71.0	\$ 71.0	\$ 0.0	\$ 0.0	\$ 0.0	\$ 0.0	\$ 0.0
		PE	100% ST	56.9	56.9	0.0	0.0	0.0	0.0	0.0
		RW	80% FHWA	24.2	0.0	24.2	0.0	0.0	0.0	0.0
		C	80% FHWA	323.7	0.0	0.0	323.7	0.0	0.0	0.0
	Total All Funds			\$ 475.8	\$ 127.9	\$ 24.2	\$ 323.7	\$ 0.0	\$ 0.0	\$ 0.0

***BR 3-330 ON OAK LANE OVER ROSSAKATUM BRANCH, LAUREL [Project No. 24-073-01]***

**PROJECT SCOPE/DESCRIPTION:** This project will consist of replacing the existing metal pipe arch with a precast concrete arch or framing with wingwalls. Other work shall include placing riprap for scour protection, reconstructing the approach roadway and replacing the existing cable guardrail with steel beam guardrail that meets current design standards.

**PROJECT JUSTIFICATION:** The existing structure consists of an elliptical corrugated metal pipe in poor condition due to the excessive corrosion and delaminations. The bridge ranks 361<sup>st</sup> out of 1,399 on the department's bridge deficiency list (via the bridge management program).

<b>County:</b>	Sussex
<b>Municipality:</b>	
<b>Funding Program:</b>	Road System – Bridges
<b>Functional Category:</b>	Preservation
<b>Representative District:</b>	40
<b>Senatorial District:</b>	21



***BR 3-330 ON OAK LANE OVER ROSSAKATUM BRANCH, LAUREL (CONTINUED)***

***Bridge 3-330 on Oak Lane Over Rossakatum Branch***



***Inside Bridge 3-330***



**BR 3-330 ON OAK LANE OVER ROSSAKATUM BRANCH, LAUREL (CONTINUED)****PROJECT FUNDING INFORMATION**

Project	Funding Type	Original Estimate	Current Estimate	Authorization	Committed as of 12/31/04	Expended as of 12/31/04	Committed Unexpended as of 12/31/04	Authorization Available
BR 3-330 on Oak Lane over Rossakatum Branch, Laurel		\$ 933.0						
Prior Years	State			\$ 27.8	\$ 27.8	\$ 15.2	\$ 12.6	\$ 0.0
	Federal			\$ 111.2	\$ 111.2	\$ 18.6	\$ 92.6	\$ 0.0
	Other			\$ 0.0	\$ 0.0	\$ 0.0	\$ 0.0	\$ 0.0
FY 2005	State		\$ 952.0	\$ 162.6	\$ 139.5	\$ 0.0	\$ 139.5	\$ 23.1
	Federal			\$ 650.4	\$ 467.8	\$ 0.0	\$ 467.8	\$ 182.6
	Other			\$ 0.0	\$ 0.0	\$ 0.0	\$ 0.0	\$ 0.0
FY 2006 Request	State							
	Federal							
	Other							
FY 2007 Projected	State							
	Federal							
	Other							
FY 2008 Projected	State							
	Federal							
	Other							
FY 2009-2011 Projected	State							
	Federal							
	Other							
Total Projected	State			\$ 190.4	\$ 167.3			\$ 23.1
	Federal			\$ 761.6	\$ 579.0			\$ 182.6
	Other			\$ 0.0	\$ 0.0			\$ 0.0
Total All Funds		\$ 933.0	\$ 952.0	\$ 952.0	\$ 746.3	\$ 33.8	\$ 712.5	\$ 205.7



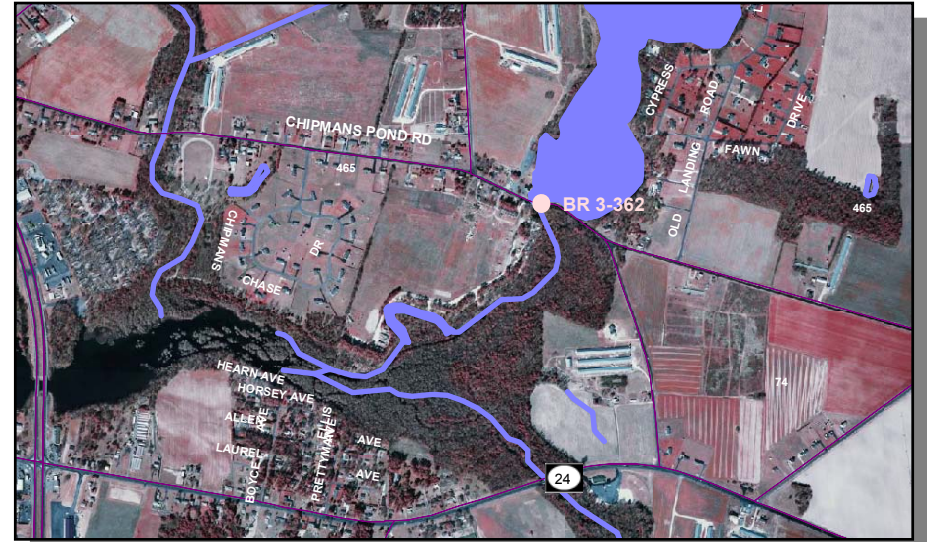
**BR 3-330 ON OAK LANE OVER ROSSAKATUM BRANCH, LAUREL (CONTINUED)****PROJECT TIMELINE INFORMATION**

Project #	Description	Phase	Funding Schedule	Current Estimate	Prior Years	FY 2005	FY 2006	FY 2007	FY 2008	FY 2009 -2011
24-073-01	<b>BR 3-330 on Oak Lane over Rossakatum Branch, Laurel</b>	PE	80% FHWA	\$ 139.0	\$ 139.0	\$ 0.0	\$ 0.0	\$ 0.0	\$ 0.0	\$ 0.0
		RW	80% FHWA	11.0	0.0	11.0	0.0	0.0	0.0	0.0
		C	80% FHWA	802.0	0.0	802.0	0.0	0.0	0.0	0.0
	Total All Funds			\$ 952.0	\$ 139.0	\$ 813.0	\$ 0.0	\$ 0.0	\$ 0.0	\$ 0.0

***BR 3-362 ON S465, CHIPMANS POND ROAD AT CHIPMAN'S POND, LAUREL [Project No. 25-073-01]***

**PROJECT SCOPE/DESCRIPTION:** Bridge 3-362 carries S465, Chipmans Pond Road over Chipmans Pond Bridge. The project will include replacement and widening of the existing bridge, construction of a new spillway to convey larger flood flows and realignment of the approach roadways to improve safety. The project will be coordinated with DNREC and their efforts to improve dam safety.

**PROJECT JUSTIFICATION:** Bridge 3-362 is currently ranked 282<sup>nd</sup> out of 1,399 on the department's bridge deficiency list. The existing bridge is functionally obsolete as it is a one-lane bridge on a two-lane road. The existing roadway geometry is unsafe because of a sharp bend in the roadway at the narrow point of the bridge. Also, the existing spillway is inadequate for handling large storm events.



<b>County:</b>	Sussex
<b>Municipality:</b>	
<b>Funding Program:</b>	Road System – Bridges
<b>Functional Category:</b>	Preservation
<b>Representative District:</b>	40
<b>Senatorial District:</b>	21



***BR 3-362 ON S465 AT CHIPMAN'S POND, LAUREL (CONTINUED)***

***Looking East Towards Bridge 3-362***



**BR 3-362 ON S465 AT CHIPMAN'S POND, LAUREL (CONTINUED)****PROJECT FUNDING INFORMATION**

Project	Funding Type	Original Estimate	Current Estimate	Authorization	Committed as of 12/31/04	Expended as of 12/31/04	Committed Unexpended as of 12/31/04	Authorization Available
BR 3-362 on S465 at Chipman's Pond, Laurel		\$ 560.0						
Prior Years	State			\$ 0.0	\$ 0.0	\$ 0.0	\$ 0.0	\$ 0.0
	Federal			\$ 0.0	\$ 0.0	\$ 0.0	\$ 0.0	\$ 0.0
	Other			\$ 0.0	\$ 0.0	\$ 0.0	\$ 0.0	\$ 0.0
FY 2005	State		\$ 574.1	\$ 144.1	\$ 144.1	\$ 15.9	\$ 128.2	\$ 0.0
	Federal			\$ 0.0	\$ 0.0	\$ 0.0	\$ 0.0	\$ 0.0
	Other			\$ 0.0	\$ 0.0	\$ 0.0	\$ 0.0	\$ 0.0
FY 2006 Request	State			\$ 86.0				\$ 86.0
	Federal			\$ 344.0				\$ 344.0
	Other			\$ 0.0				\$ 0.0
FY 2007 Projected	State							
	Federal							
	Other							
FY 2008 Projected	State							
	Federal							
	Other							
FY 2009-2011 Projected	State							
	Federal							
	Other							
Total Projected	State			\$ 230.1	\$ 144.1			\$ 86.0
	Federal			\$ 344.0	\$ 0.0			\$ 344.0
	Other			\$ 0.0	\$ 0.0			\$ 0.0
Total All Funds		\$ 560.0	\$ 574.1	\$ 574.1	\$ 144.1	\$ 15.9	\$ 128.2	\$ 430.0



**BR 3-362 ON S465 AT CHIPMAN'S POND, LAUREL (CONTINUED)****PROJECT TIMELINE INFORMATION**

Project #	Description	Phase	Funding Schedule	Current Estimate	Prior Years	FY 2005	FY 2006	FY 2007	FY 2008	FY 2009 -2011
25-073-01	<b>BR 3-362 on S465 at Chipman's Pond, Laurel</b>	PE	100% ST	\$ 75.0	\$ 0.0	\$ 75.0	\$ 0.0	\$ 0.0	\$ 0.0	\$ 0.0
		RW	100% ST	69.1	0.0	69.1	0.0	0.0	0.0	0.0
		C	80% FHWA	430.0	0.0	0.0	430.0	0.0	0.0	0.0
	Total All Funds			\$ 574.1	\$ 0.0	\$ 144.1	\$ 430.0	\$ 0.0	\$ 0.0	\$ 0.0