

SR 15, CHOPTANK ROAD FROM N437, BUNKER HILL ROAD TO N286, BETHEL CHURCH ROAD [Project No. 22-120-01]

PROJECT SCOPE/DESCRIPTION: This project will widen the current 18-foot travelway to 22-feet with additional five-foot pedestrian and bicycle shoulders; full reconstruction of pavement; realign sections of SR 15, Choptank Road from N437, Bunker Hill Road to N433, Bethel Church Road to create clear sight distances; and construct three roundabouts at the intersections of Choptank Road-Bethel Church Road, Choptank Road-Churchtown Road, and Choptank Road-Bunker Hill Road.

PROJECT JUSTIFICATION: This project will provide additional modes of transportation in the US301 corridor.

County: New Castle
Municipality:
Funding Program: Road System – Locals
Functional Category: Management
Representative District: 8, 9
Senatorial District: 10, 14



SR 15, Choptank Road and Churchtown Road Intersection



SR 15, CHOPTANK ROAD FROM N437, BUNKER HILL ROAD TO N286, BETHEL CHURCH ROAD (CONTINUED)**PROJECT FUNDING INFORMATION**

Project	Funding Type	Original Estimate	Current Estimate	Authorization	Committed as of 12/31/04	Expended as of 12/31/04	Committed Unexpended as of 12/31/04	Authorization Available
SR 15, Choptank Road from N437, Bunker Hill Road to N286, Bethel Church Road		\$ 14,144.7						
Prior Years	State			\$ 2,010.6	\$ 2,010.6	\$ 1,539.5	\$ 471.1	\$ 0.0
	Federal			\$ 0.0	\$ 0.0	\$ 0.0	\$ 0.0	\$ 0.0
	Other			\$ 0.0	\$ 0.0	\$ 0.0	\$ 0.0	\$ 0.0
FY 2005	State		\$ 14,144.7	\$ 3,596.1	\$ 2,632.6	\$ 0.0	\$ 2,632.6	\$ 963.5
	Federal			\$ 8,538.0	\$ 6,974.4	\$ 11.5	\$ 6,962.9	\$ 1,563.6
	Other			\$ 0.0	\$ 0.0	\$ 0.0	\$ 0.0	\$ 0.0
FY 2006 Request	State							
	Federal							
	Other							
FY 2007 Projected	State							
	Federal							
	Other							
FY 2008 Projected	State							
	Federal							
	Other							
FY 2009-2011 Projected	State							
	Federal							
	Other							
Total Projected	State			\$ 5,606.7	\$ 4,643.2			\$ 963.5
	Federal			\$ 8,538.0	\$ 6,974.4			\$ 1,563.6
	Other			\$ 0.0	\$ 0.0			\$ 0.0
Total All Funds		\$ 14,144.7	\$ 14,144.7	\$ 14,144.7	\$ 11,617.6	\$ 1,551.0	\$ 10,066.6	\$ 2,527.1

SR 15, CHOPTANK ROAD FROM N437, BUNKER HILL ROAD TO N286, BETHEL CHURCH ROAD (CONTINUED)**PROJECT TIMELINE INFORMATION**

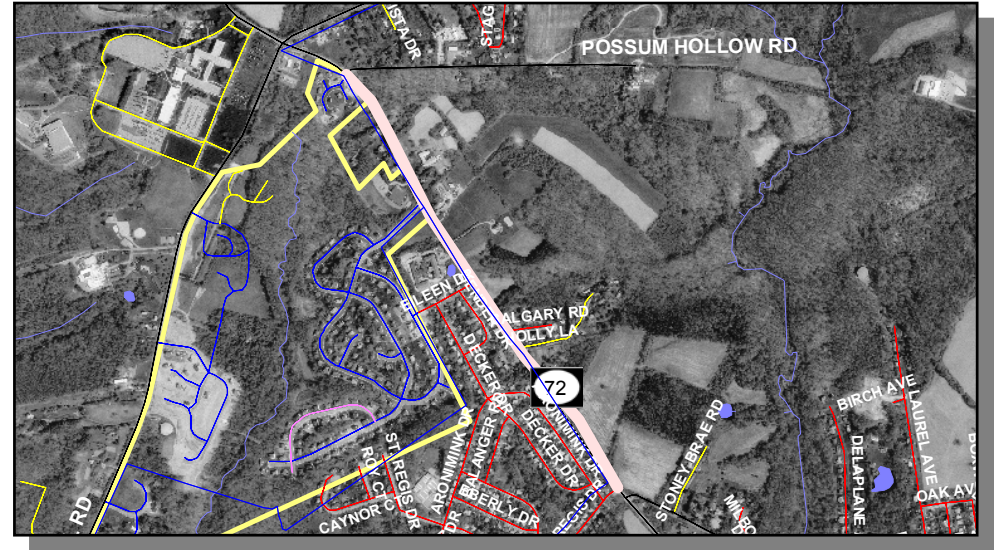
Project #	Description	Phase	Funding Schedule	Current Estimate	Prior Years	FY 2005	FY 2006	FY 2007	FY 2008	FY 2009 -2011
22-120-01	SR 15, Choptank Road from N437, Bunker Hill Road to N286, Bethel Church Road	LOC, ENV	100% ST	\$ 38.0	\$ 38.0	\$ 0.0	\$ 0.0	\$ 0.0	\$ 0.0	\$ 0.0
		PE	100% ST	2,360.0	1,060.0	1,300.0	0.0	0.0	0.0	0.0
		RW	100% ST	1,074.2	912.6	161.6	0.0	0.0	0.0	0.0
		C	80% FHWA	10,672.4	0.0	10,672.4	0.0	0.0	0.0	0.0
	Total All Funds			\$ 14,144.7	\$ 2,010.6	\$ 12,134.1	\$ 0.0	\$ 0.0	\$ 0.0	\$ 0.0

SR 72, POSSUM PARK ROAD FROM N299, POSSUM HOLLOW ROAD TO N303, OLD POSSUM PARK ROAD [Project No. 23-044-01]

PROJECT SCOPE/DESCRIPTION: This project will widen and reconstruct the existing shoulders of SR 72, Possum Park Road from N299, Possum Hollow Road to N303, Old Possum Park Road to 12-feet. Additional improvements include guardrail and drainage improvements, hot mix patching, and a milling/overlay to the roadway.

PROJECT JUSTIFICATION: This project will improve transportation modes along the corridor.

County: New Castle
Municipality:
Funding Program: Road System – Locals
Functional Category: Management
Representative District: 21, 22, 23
Senatorial District: 6, 8



SR 72, POSSUM PARK ROAD FROM N299, POSSUM HOLLOW ROAD TO N303, OLD POSSUM PARK ROAD (CONTINUED)**PROJECT FUNDING INFORMATION**

Project	Funding Type	Original Estimate	Current Estimate	Authorization	Committed as of 12/31/04	Expended as of 12/31/04	Committed Unexpended as of 12/31/04	Authorization Available
SR 72, Possum Park Road from N299, Possum Hollow Road to N303, Old Possum Park Road		\$ 2,850.0						
Prior Years	State			\$ 350.0	\$ 350.0	\$ 40.4	\$ 309.6	\$ 0.0
	Federal			\$ 0.0	\$ 0.0	\$ 0.0	\$ 0.0	\$ 0.0
	Other			\$ 0.0	\$ 0.0	\$ 0.0	\$ 0.0	\$ 0.0
FY 2005	State		\$ 2,950.0	\$ 100.0	\$ 100.0	\$ 0.0	\$ 100.0	\$ 0.0
	Federal			\$ 0.0	\$ 0.0	\$ 0.0	\$ 0.0	\$ 0.0
	Other			\$ 0.0	\$ 0.0	\$ 0.0	\$ 0.0	\$ 0.0
FY 2006 Request	State			\$ 0.0				\$ 0.0
	Federal			\$ 0.0				\$ 0.0
	Other			\$ 0.0				\$ 0.0
FY 2007 Projected	State			\$ 500.0				\$ 500.0
	Federal			\$ 2,000.0				\$ 2,000.0
	Other			\$ 0.0				\$ 0.0
FY 2008 Projected	State							
	Federal							
	Other							
FY 2009-2011 Projected	State							
	Federal							
	Other							
Total Projected	State			\$ 950.0	\$ 450.0			\$ 500.0
	Federal			\$ 2,000.0	\$ 0.0			\$ 2,000.0
	Other			\$ 0.0	\$ 0.0			\$ 0.0
Total All Funds		\$ 2,850.0	\$ 2,950.0	\$ 2,950.0	\$ 450.0	\$ 40.4	\$ 409.6	\$ 2,500.0

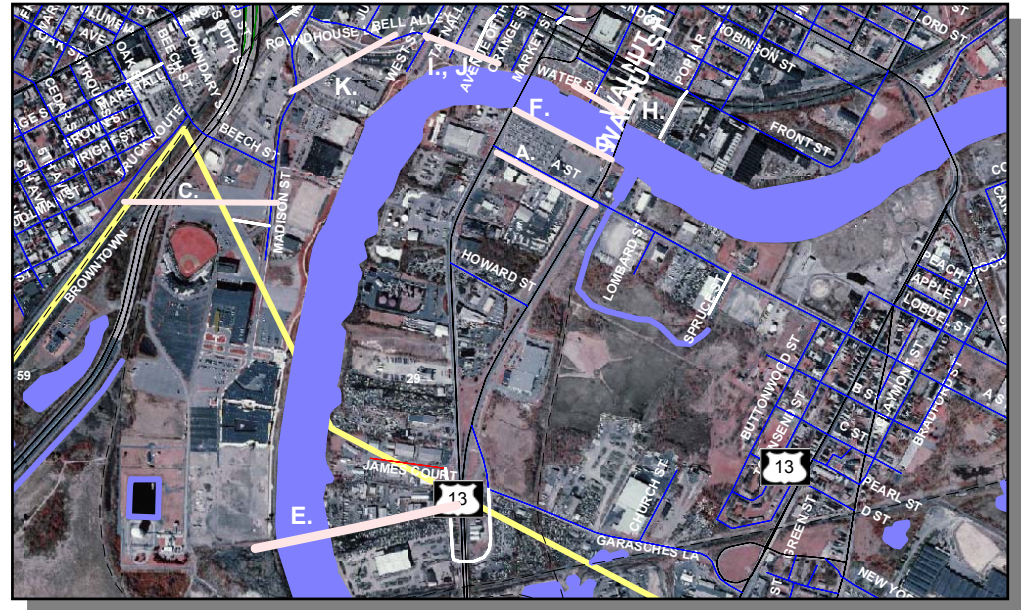
SR 72, POSSUM PARK ROAD FROM N299, POSSUM HOLLOW ROAD TO N303, OLD POSSUM PARK ROAD (CONTINUED)**PROJECT TIMELINE INFORMATION**

Project #	Description	Phase	Funding Schedule	Current Estimate	Prior Years	FY 2005	FY 2006	FY 2007	FY 2008	FY 2009 -2011
23-044-01	SR 72, Possum Park Road from N299, Possum Hollow Road to N303, Old Possum Park Road	PE	100% ST	\$ 350.0	\$ 350.0	\$ 0.0	\$ 0.0	\$ 0.0	\$ 0.0	\$ 0.0
		RW	100% ST	100.0	0.0	100.0	0.0	0.0	0.0	0.0
		C	80% FHWA	2,500.0	0.0	0.0	0.0	2,500.0	0.0	0.0
	Total All Funds			\$ 2,950.0	\$ 350.0	\$ 100.0	\$ 0.0	\$ 2,500.0	\$ 0.0	\$ 0.0

WILMINGTON RIVERFRONT**PROJECT SCOPE/DESCRIPTION:**

A. **A Street, South Market Street to South Walnut Street - Street Improvements [Project No. 24-121-03]** – This project provides streetscaping improvements on A Street between Market and Walnut Streets. Concepts include reconstructing of the existing roadway to an elevation approximately two feet higher than the existing roadway elevation, the addition of a brick and landscaped median, bump-outs to delineate on-street parking and enhanced entrance delineation. Brick sidewalks, lighting, ornamental signals and a keystone retaining wall along the south side of A Street to maintain access to the existing businesses are also included in this concept. The cost of undergrounding the aerial utilities along A Street is included.

B. **Bioswale Modification [Project No. 24-121-02]** – The goal of this project is to improve the aesthetics and function of the bio-filtration system adjacent to the Christina Riverwalk. This will be done using the latest techniques to achieve water quality standards and simultaneously keeping a pleasing landscape with cost effective maintenance.



C. **Browntown Pedestrian Walkway from Community Center to Stadium Area [Project No. 22-121-02]**- This project provides a critical pedestrian link from the nearby community to the Riverfront Arts Center, Frawley Stadium, and other Riverfront attractions. It will construct pathways that are safe for pedestrians and encourage more pedestrian, rather than vehicular, movement in the area. The community is presently separated from the Riverfront by railroad tracks and the I-95 Viaduct.

D. **Bulkhead Rehabilitation [Project No. 24-121-01]** – The goal of this project is to re-construct the old bulkhead of the Christina River's south bank between Market and Walnut Streets. This will facilitate the future economic development of the parcel bounded by the river, Market and Walnut Streets, and A Street.

E. **Christina River Bridge** – Due to increased activity in the Riverfront Area, a new crossing of the Christina River will be constructed that will connect just south of the Shipyard Shops and connecting with US 13 south of the South Walnut Street, South Market Street split.

F. **Riverwalk, South Market Street to South Walnut Street with Sidewalk Connections to Bridges [Project No. 24-121-05]** – This will include construction of a new riverwalk on the south side of the Christina River beginning at Market Street bridge with a pedestrian connection, continuing eastward with a 16-foot wide brick walkway, landscaping, lighting and an ornamental railing along the bulkhead to Walnut Street with a pedestrian connection to the Walnut Street bridge sidewalk.

WILMINGTON RIVERFRONT (CONTINUED)

- G. **Riverwalk VIII, South of Shipyard Shops through Peterson Preserve [Project No. 20-121-01]** – The final portion of the Riverwalk will connect the Shipyard Shops to the Education Center at the Governor Peterson Wildlife Preserve. This provides pedestrian-friendly access to a wildlife refuge area and is consistent with the designs of previous Riverwalk phases.
- H. **Water Street East [Project No. 23-121-01]** – From its current terminus at French Street, Water Street will be extended along the south side of the Pennsylvania Building and along the east side of the Pennsylvania Building and Amtrak Train Station and connected to Front Street. Due to development plans to enclose the space between the Pennsylvania Building and Amtrak Train Station, this will provide fire safety access to the new structure and at the same time provide a public roadway for better overall access to the area.
- I. **Justison Street and Public Works [Project No.'s 24-121-04 and 24-121-07]** – This project's focus will be the Riverfront area bounded by the Amtrak Northeast Corridor viaduct and the West Street Connector from Water Street to South Madison Street. The project will provide better access to properties, improve traffic flow, beautify the area and provide good pedestrian connections. The goal is to continue to encourage and stimulate economic growth as part of the Christina Riverfront re-development efforts.
- J. **Water Street West, Shipley Street to West Street [Project No. 23-121-04]** – This project will provide street trees, ornamental lighting, decorative sidewalks and paving to an area immediately adjacent to present and future development parcels at the Riverfront.
- K. **West Street Connector Extension [Project No. 99-121-02]** – This project will provide better access into Frawley Stadium and the interstate, as well as, provide the infrastructure to support the redevelopment of the Christina Riverfront.
- L. **West Street Connector Extension, Streetscape, South Madison to Stadium Drive** – This will provide streetscaping to the West Street Connector Extension project.
- M. **Wilmington Parking Deck** - Supplemental funding was appropriated from this category to complete the ING Riverfront parking garage, listed under Transit Facilities in this document.

PROJECT JUSTIFICATION: The success of Wilmington's redevelopment of this area depends on multi-modal transportation improvements. The Riverwalk provides a critical pedestrian link from the Wilmington Transit Center and Riverfront Park to riverfront attractions like Frawley Stadium, the Arts Center, Shipyard Shops, restaurants, and entertainment.

County: New Castle
Municipality: Wilmington
Funding Program: Road System – Locals
Functional Category: Management
Representative District: 2, 3, 16
Senatorial District: 2, 3



WILMINGTON RIVERFRONT (CONTINUED)**PROJECT FUNDING INFORMATION**

Project	Funding Type	Original Estimate	Current Estimate	Authorization	Committed as of 12/31/04	Expended as of 12/31/04	Committed Unexpended as of 12/31/04	Authorization Available
Wilmington Riverfront		\$ 82,122.5						
Prior Years	State			\$ 41,182.0	\$ 41,182.0	\$ 27,501.9	\$ 13,680.0	\$ 0.0
	Federal			\$ 0.0	\$ 0.0	\$ 0.0	\$ 0.0	\$ 0.0
	Other			\$ 0.0	\$ 0.0	\$ 0.0	\$ 0.0	\$ 0.0
FY 2005	State		\$ 93,834.0	\$ 16,800.0	\$ 10,180.5	\$ 0.0	\$ 10,180.5	\$ 6,619.5
	Federal			\$ 0.0	\$ 0.0	\$ 0.0	\$ 0.0	\$ 0.0
	Other			\$ 0.0	\$ 0.0	\$ 0.0	\$ 0.0	\$ 0.0
FY 2006 Request	State			\$ 5,600.0				\$ 12,219.5
	Federal			\$ 0.0				\$ 0.0
	Other			\$ 0.0				\$ 0.0
FY 2007 Projected	State			\$ 8,252.0				\$ 20,471.5
	Federal			\$ 0.0				\$ 0.0
	Other			\$ 0.0				\$ 0.0
FY 2008 Projected	State			\$ 0.0				\$ 20,471.5
	Federal			\$ 0.0				\$ 0.0
	Other			\$ 0.0				\$ 0.0
FY 2009-2011 Projected	State			\$ 22,000.0				\$ 42,471.5
	Federal			\$ 0.0				\$ 0.0
	Other			\$ 0.0				\$ 0.0
Total Projected	State			\$ 93,834.0	\$ 51,362.5			\$ 42,471.5
	Federal			\$ 0.0	\$ 0.0			\$ 0.0
	Other			\$ 0.0	\$ 0.0			\$ 0.0
Total All Funds		\$ 82,122.5	\$ 93,834.0	\$ 93,834.0	\$ 51,362.5	\$ 27,501.9	\$ 23,860.5	\$ 42,471.5

WILMINGTON RIVERFRONT (CONTINUED)**PROJECT TIMELINE INFORMATION**

Project #	Description	Phase	Funding Schedule	Current Estimate	Prior Years	FY 2005	FY 2006	FY 2007	FY 2008	FY 2009 -2011
	Wilmington Riverfront									
	Program Development	PD	100% ST	\$ 17,370.0	\$ 11,420.0	\$ 350.0	\$ 5,600.0	\$ 0.0	\$ 0.0	\$ 0.0
24-121-03	A. A Street, South Market Street to South Walnut Street - Street Improvements	PE	100% ST	200.0	200.0	0.0	0.0	0.0	0.0	0.0
		RW	100% ST	2,000.0	200.0	1,800.0	0.0	0.0	0.0	0.0
		C	100% ST	14,975.0	5,600.0	9,375.0	0.0	0.0	0.0	0.0
24-121-02	B. Bioswale Modification	C	100% ST	750.0	750.0	0.0	0.0	0.0	0.0	0.0
22-121-02	C. Browntown Pedestrian Walkway from Community Center to Stadium Area	PE	100% ST	50.0	50.0	0.0	0.0	0.0	0.0	0.0
		ENV	100% ST	25.0	25.0	0.0	0.0	0.0	0.0	0.0
		RW	100% ST	25.0	25.0	0.0	0.0	0.0	0.0	0.0
		C	100% ST	1,125.0	1,125.0	0.0	0.0	0.0	0.0	0.0
24-121-01	D. Bulkhead Rehabilitation	C	100% ST	3,000.0	3,000.0	0.0	0.0	0.0	0.0	0.0
		ENV	100% ST	0.0	0.0	0.0	0.0	0.0	0.0	0.0
	E. Christina River Bridge	PD	100% ST	500.0	0.0	500.0	0.0	0.0	0.0	0.0
		PE	100% ST	2,000.0	0.0	0.0	0.0	0.0	0.0	2,000.0
		C	100% ST	20,000.0	0.0	0.0	0.0	0.0	0.0	20,000.0
24-121-05	F. Riverwalk, South Market Street to South Walnut Street with Sidewalk Connections to Bridges	PE	100% ST	350.0	350.0	0.0	0.0	0.0	0.0	0.0
		RW	100% ST	200.0	200.0	0.0	0.0	0.0	0.0	0.0
		C	100% ST	3,375.0	2,600.0	775.0	0.0	0.0	0.0	0.0
20-121-01	G. Riverwalk VIII, South of Shipyard Shops through Peterson Preserve	PE	100% ST	800.0	0.0	0.0	0.0	800.0	0.0	0.0
		C	100% ST	2,800.0	0.0	0.0	0.0	2,800.0	0.0	0.0

WILMINGTON RIVERFRONT (CONTINUED)**PROJECT TIMELINE INFORMATION**

Project #	Description	Phase	Funding Schedule	Current Estimate	Prior Years	FY 2005	FY 2006	FY 2007	FY 2008	FY 2009 -2011
	Wilmington Riverfront (Continued)									
23-121-01	H. Water Street East	PE	100% ST	0.0	0.0	0.0	0.0	0.0	0.0	0.0
		C	100% ST	4,876.5	4,876.5	0.0	0.0	0.0	0.0	0.0
24-121-04	I. Justison Street and Public Works	PE, RW, C	100% ST	11,000.0	7,000.0	4,000.0	0.0	0.0	0.0	0.0
24-121-07										
23-121-04	J. Water Street West, Shipley Street to West Street	PE	100% ST	300.0	300.0	0.0	0.0	0.0	0.0	0.0
		RW	100% ST	200.0	200.0	0.0	0.0	0.0	0.0	0.0
		C	100% ST	0.0	0.0	0.0	0.0	0.0	0.0	0.0
99-121-02	K. West Street Connector Extension	C	100% ST	4,001.0	2,499.0	0.0	0.0	1,502.0	0.0	0.0
	L. West Street Connector Extension - Streetscape, South Madison to Stadium Drive	PE	100% ST	650.0	0.0	0.0	0.0	650.0	0.0	0.0
		RW	100% ST	250.0	0.0	0.0	0.0	250.0	0.0	0.0
		C	100% ST	2,250.0	0.0	0.0	0.0	2,250.0	0.0	0.0
	M. Wilmington Parking Deck	PE, C	100% ST	761.5	761.5	0.0	0.0	0.0	0.0	0.0
	Total All Funds			\$ 93,834.0	\$ 41,182.0	\$ 16,800.0	\$ 5,600.0	\$ 8,252.0	\$ 0.0	\$ 22,000.0

WILMINGTON SIGNAL IMPROVEMENTS

PROJECT SCOPE/DESCRIPTION: This project includes the installation of light emitting diode (LED) modules in the green and red signals along state maintained roads and other principal routes throughout the City of Wilmington.

PROJECT JUSTIFICATION: LED’s have been installed throughout the State as a cost reducing measure as the incandescent bulbs have a much shorter lifespan than LED’s.

County:

Municipality:

Funding Program:

Functional Category:

Representative District:

Senatorial District:

New Castle

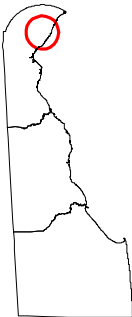
Wilmington

Road System – Locals

Management

1, 2, 3, 4, 16

1, 2, 3



WILMINGTON SIGNAL IMPROVEMENTS (CONTINUED)**PROJECT FUNDING INFORMATION**

Project	Funding Type	Original Estimate	Current Estimate	Authorization	Committed as of 12/31/04	Expended as of 12/31/04	Committed Unexpended as of 12/31/04	Authorization Available
Wilmington Signal Improvements		\$ 750.0						
Prior Years	State			\$ 0.0	\$ 0.0	\$ 0.0	\$ 0.0	\$ 0.0
	Federal			\$ 0.0	\$ 0.0	\$ 0.0	\$ 0.0	\$ 0.0
	Other			\$ 0.0	\$ 0.0	\$ 0.0	\$ 0.0	\$ 0.0
FY 2005	State		\$ 750.0	\$ 100.0	\$ 100.0	\$ 0.0	\$ 100.0	\$ 0.0
	Federal			\$ 0.0	\$ 0.0	\$ 0.0	\$ 0.0	\$ 0.0
	Other			\$ 0.0	\$ 0.0	\$ 0.0	\$ 0.0	\$ 0.0
FY 2006 Request	State			\$ 130.0				\$ 130.0
	Federal			\$ 520.0				\$ 520.0
	Other			\$ 0.0				\$ 0.0
FY 2007 Projected	State			\$ 0.0				\$ 130.0
	Federal			\$ 0.0				\$ 520.0
	Other			\$ 0.0				\$ 0.0
FY 2008 Projected	State			\$ 0.0				\$ 130.0
	Federal			\$ 0.0				\$ 520.0
	Other			\$ 0.0				\$ 0.0
FY 2009-2011 Projected	State			\$ 0.0				\$ 130.0
	Federal			\$ 0.0				\$ 520.0
	Other			\$ 0.0				\$ 0.0
Total Projected	State			\$ 230.0	\$ 100.0			\$ 130.0
	Federal			\$ 520.0	\$ 0.0			\$ 520.0
	Other			\$ 0.0	\$ 0.0			\$ 0.0
Total All Funds		\$ 750.0	\$ 750.0	\$ 750.0	\$ 100.0	\$ 0.0	\$ 100.0	\$ 650.0

WILMINGTON SIGNAL IMPROVEMENTS (CONTINUED)**PROJECT TIMELINE INFORMATION**

Project #	Description	Phase	Funding Schedule	Current Estimate	Prior Years	FY 2005	FY 2006	FY 2007	FY 2008	FY 2009 -2011
	Wilmington Signal Improvements	PE, C	100% ST	\$ 100.0	\$ 0.0	\$ 100.0	\$ 0.0	\$ 0.0	\$ 0.0	\$ 0.0
		PE, C	80% FHWA	650.0	0.0	0.0	650.0	0.0	0.0	0.0
	Total All Funds			\$ 750.0	\$ 0.0	\$ 100.0	\$ 650.0	\$ 0.0	\$ 0.0	\$ 0.0