

NEW CASTLE COUNTY

ROAD SYSTEM

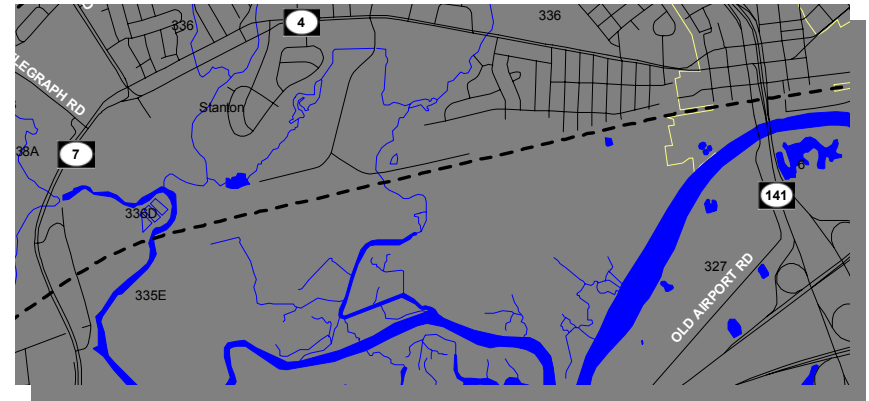
EXPRESSWAYS

BREAD AND CHEESE ISLAND [ID No. 05-00094]

PROJECT SCOPE/DESCRIPTION: Funding is requested to purchase land between SR141, Basin Road and Glenville in the Christina River for possible future use as a fresh water reservoir.

PROJECT JUSTIFICATION: The current real estate market is conducive to purchase this property at the current time.

County:	New Castle
Municipality:	
Funding Program:	Road System – Expressways
Functional Category:	Management
Representative District:	18, 19
Senatorial District:	9



BREAD AND CHEESE ISLAND (CONTINUED)**PROJECT FUNDING INFORMATION**

Project	Funding Type	Original Estimate	Current Estimate	Authorization	Committed as of 12/31/04	Expended as of 12/31/04	Committed Unexpended as of 12/31/04	Authorization Available
Bread and Cheese Island		\$ 5,000.0						
Prior Years	State			\$ 0.0	\$ 0.0	\$ 0.0	\$ 0.0	\$ 0.0
	Federal			\$ 0.0	\$ 0.0	\$ 0.0	\$ 0.0	\$ 0.0
	Other			\$ 0.0	\$ 0.0	\$ 0.0	\$ 0.0	\$ 0.0
FY 2005	State		\$ 5,000.0	\$ 0.0	\$ 0.0	\$ 0.0	\$ 0.0	\$ 0.0
	Federal			\$ 0.0	\$ 0.0	\$ 0.0	\$ 0.0	\$ 0.0
	Other			\$ 0.0	\$ 0.0	\$ 0.0	\$ 0.0	\$ 0.0
FY 2006 Request	State			\$ 5,000.0				\$ 5,000.0
	Federal			\$ 0.0				\$ 0.0
	Other			\$ 0.0				\$ 0.0
FY 2007 Projected	State			\$ 0.0				\$ 5,000.0
	Federal			\$ 0.0				\$ 0.0
	Other			\$ 0.0				\$ 0.0
FY 2008 Projected	State			\$ 0.0				\$ 5,000.0
	Federal			\$ 0.0				\$ 0.0
	Other			\$ 0.0				\$ 0.0
FY 2009-2011 Projected	State			\$ 0.0				\$ 5,000.0
	Federal			\$ 0.0				\$ 0.0
	Other			\$ 0.0				\$ 0.0
Total Projected	State			\$ 5,000.0	\$ 0.0			\$ 5,000.0
	Federal			\$ 0.0	\$ 0.0			\$ 0.0
	Other			\$ 0.0	\$ 0.0			\$ 0.0
Total All Funds		\$ 5,000.0	\$ 5,000.0	\$ 5,000.0	\$ 0.0	\$ 0.0	\$ 0.0	\$ 5,000.0

BREAD AND CHEESE ISLAND (CONTINUED)**PROJECT TIMELINE INFORMATION**

Project #	Description	Phase	Funding Schedule	Current Estimate	Prior Years	FY 2005	FY 2006	FY 2007	FY 2008	FY 2009 -2011
	Bread and Cheese Island	PD	100% ST	\$ 5,000.0	\$ 0.0	\$ 0.0	\$ 5,000.0	\$ 0.0	\$ 0.0	\$ 0.0
	Total All Funds			\$ 5,000.0	\$ 0.0	\$ 0.0	\$ 5,000.0	\$ 0.0	\$ 0.0	\$ 0.0

GLENVILLE WETLAND MITIGATION [Project No. 24-037-03]

PROJECT SCOPE/DESCRIPTION: Funding has been appropriated from the General Fund of the State to the Transportation Trust Fund. The department will use these funds to continue its program of property acquisitions and relocations for the residents of Glenville/Stanton Crest along the Red Clay Creek. The department will apply all of these reimbursements, together with the net proceeds of the sale of any vacant lots and surplus housing, to the relevant accounts in the Transportation Trust Fund.

After the completion of the property acquisitions, DelDOT will investigate the possibility of constructing a wetland mitigation area. The estimated cost of this improvement is not fully determined at this time.

PROJECT JUSTIFICATION: This area is in a severe flood plain and is a constant threat during heavy storms and the flooding of the Red Clay Creek.



County:	New Castle
Municipality:	
Funding Program:	Road System – Expressways
Functional Category:	Preservation
Representative District:	19
Senatorial District:	9



GLENVILLE WETLAND MITIGATION (CONTINUED)**PROJECT FUNDING INFORMATION**

Project	Funding Type	Original Estimate	Current Estimate	Authorization	Committed as of 12/31/04	Expended as of 12/31/04	Committed Unexpended as of 12/31/04	Authorization Available
Glenville Wetland Mitigation		\$ 59,263.0						
Prior Years	State			\$ 1,013.0	\$ 1,013.0	\$ 516.0	\$ 497.0	\$ 0.0
	Federal			\$ 0.0	\$ 0.0	\$ 0.0	\$ 0.0	\$ 0.0
	Other			\$ 15,000.0	\$ 15,000.0	\$ 15,000.0	\$ 0.0	\$ 0.0
FY 2005	State		\$ 59,263.0	\$ 18,250.0	\$ 17,964.7	\$ 0.0	\$ 17,964.7	\$ 285.3
	Federal			\$ 0.0	\$ 0.0	\$ 0.0	\$ 0.0	\$ 0.0
	Other			\$ 15,000.0	\$ 15,000.0	\$ 11,057.1	\$ 3,942.9	\$ 0.0
FY 2006 Request	State			\$ 5,000.0				\$ 5,285.3
	Federal			\$ 0.0				\$ 0.0
	Other			\$ 0.0				\$ 0.0
FY 2007 Projected	State			\$ 5,000.0				\$ 10,285.3
	Federal			\$ 0.0				\$ 0.0
	Other			\$ 0.0				\$ 0.0
FY 2008 Projected	State			\$ 0.0				\$ 10,285.3
	Federal			\$ 0.0				\$ 0.0
	Other			\$ 0.0				\$ 0.0
FY 2009-2011 Projected	State			\$ 0.0				\$ 10,285.3
	Federal			\$ 0.0				\$ 0.0
	Other			\$ 0.0				\$ 0.0
Total Projected	State			\$ 29,263.0	\$ 18,977.7			\$ 10,285.3
	Federal			\$ 0.0	\$ 0.0			\$ 0.0
	Other			\$ 30,000.0	\$ 30,000.0			\$ 0.0
Total All Funds		\$ 59,263.0	\$ 59,263.0	\$ 59,263.0	\$ 48,977.7	\$ 26,573.1	\$ 22,404.6	\$ 10,285.3

GLENVILLE WETLAND MITIGATION (CONTINUED)**PROJECT TIMELINE INFORMATION**

Project #	Description	Phase	Funding Schedule	Current Estimate	Prior Years	FY 2005	FY 2006	FY 2007	FY 2008	FY 2009 -2011
24-037-03	Glenville Wetland Mitigation	RW	100% ST	\$ 19,263.0	\$ 1,013.0	\$ 18,250.0	\$ 0.0	\$ 0.0	\$ 0.0	\$ 0.0
		RW	100% COUNTY	30,000.0	15,000.0	15,000.0	0.0	0.0	0.0	0.0
		PD	100% ST	5,000.0	0.0	0.0	5,000.0	0.0	0.0	0.0
		PE	100% ST	5,000.0	0.0	0.0	0.0	5,000.0	0.0	0.0
	Total All Funds			\$ 59,263.0	\$ 16,013.0	\$ 33,250.0	\$ 5,000.0	\$ 5,000.0	\$ 0.0	\$ 0.0

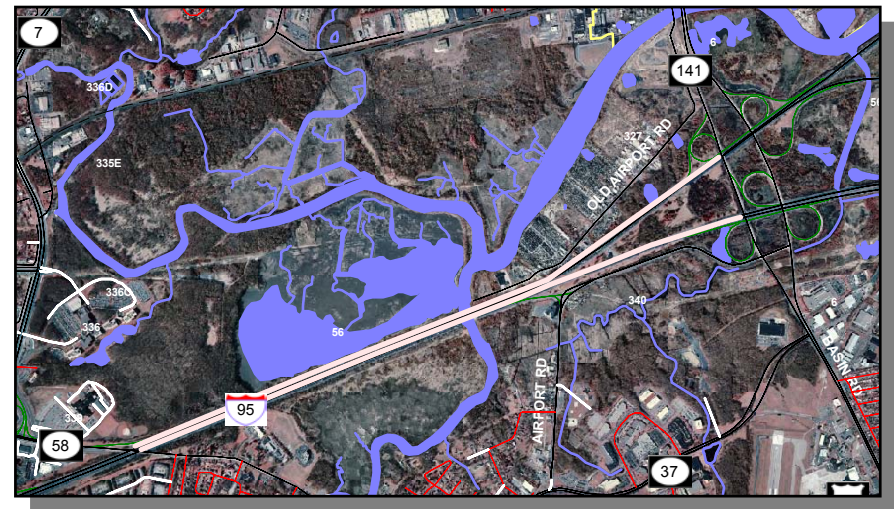
I-95, MARYLAND STATE LINE TO SR141

PROJECT SCOPE/DESCRIPTION: In FY 2004 the department began a major effort to focus on the preparation of the formal and environmental documentation that is needed for funding of a major project. This series of projects will consist of major improvements throughout the area to help alleviate traffic congestion. Notices for the public workshops on (December 1 and 2, 2003) for these projects are entitled “**Delaware Turnpike Improvements Projects.**” These improvements include:

Churchman’s Road Bridge [Project No. 91-071-05] – Construction of a new two-lane bridge on Churchman’s Road over I-95 that will provide shoulders and sidewalks.

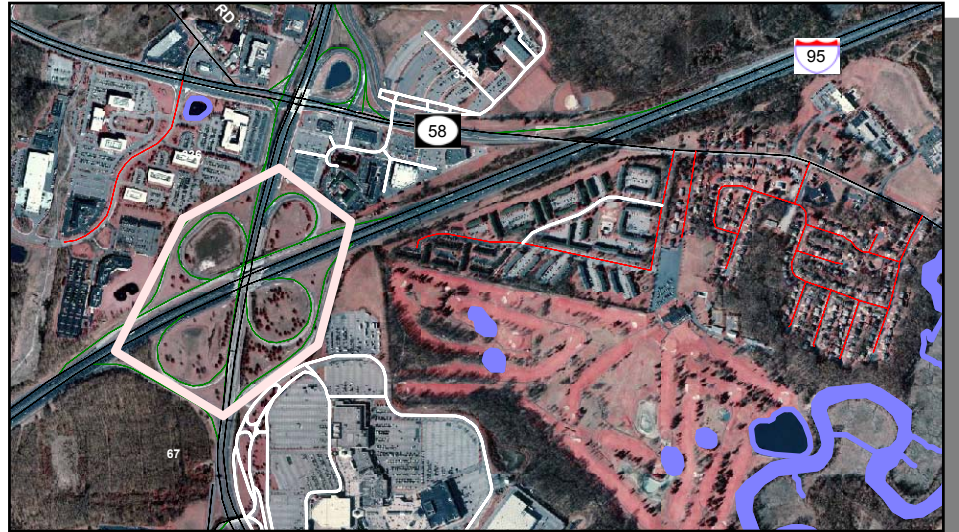


I-95, Fifth Lane Expansion from Churchman’s Bridge to SR141, Basin Road [Project No. 23-690-03] – Construction will include a new fifth travel lane from the new bridge to SR141, Basin Road through Churchman’s Marsh.



I-95, MARYLAND STATE LINE TO SR141 (CONTINUED)

SR 1/I-95 Interchange [Project No. 25-090-01] – Construction of a new multiple-lane interchange will eliminate the traffic weaving around the Christiana Mall, SR 1, and I-95 areas



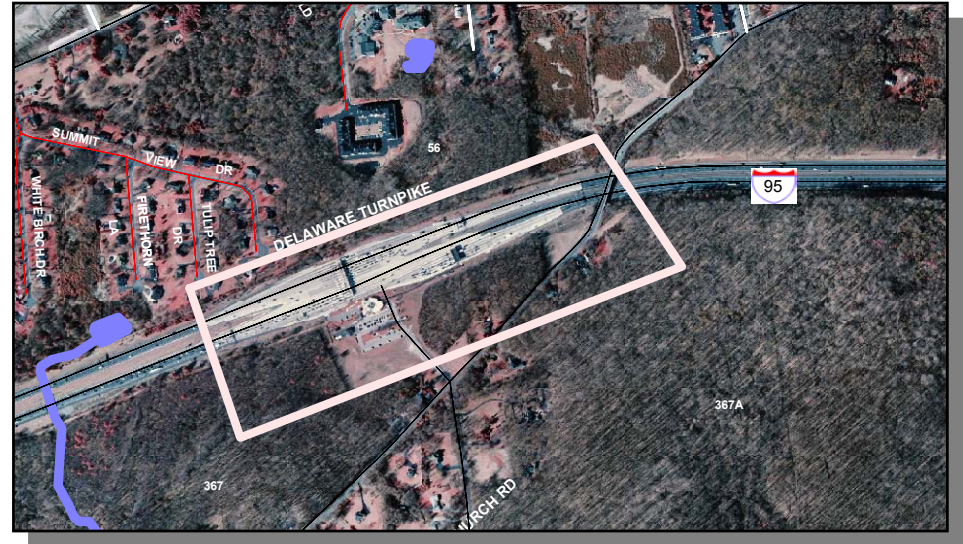
SR896, South College Avenue/I-95 Interchange, Rehabilitation – Project Development work will investigate the need for future improvements which could include, maintain as is; upgrading the current approaches and the on/off ramps; or construction of total new interchanges for northbound and southbound I-95 from SR896.



I-95, MARYLAND STATE LINE TO SR141 (CONTINUED)

Toll Plaza Rehabilitation and Highway Speed *E-ZPass* Improvements [Project No. 24-090-03] – This project will enhance the current computer technology utilized on I-95 to process electronic toll collection by installing safe highway speed lanes.

PROJECT JUSTIFICATION: The department will invest over \$185 million to reduce traffic congestion in the busy I-95 northeast corridor.



County:	New Castle
Municipality:	
Funding Program:	Road System – Expressways
Functional Category:	Expansion
Representative District:	18, 24, 25, 26
Senatorial District:	9, 10, 11



*I-95, MARYLAND STATE LINE TO SR141 (CONTINUED)***PROJECT FUNDING INFORMATION**

Project	Funding Type	Original Estimate	Current Estimate	Authorization	Committed as of 12/31/04	Expended as of 12/31/04	Committed Unexpended as of 12/31/04	Authorization Available
I-95, Maryland State Line to SR141		\$ 190,661.0						
Prior Years	State			\$ 10,232.6	\$ 10,232.6	\$ 2,171.6	\$ 8,061.0	\$ 0.0
	Federal			\$ 18,727.8	\$ 18,727.8	\$ 4,279.0	\$ 14,448.8	\$ 0.0
	Other			\$ 0.0	\$ 0.0	\$ 0.0	\$ 0.0	\$ 0.0
FY 2005	State		\$ 229,976.6	\$ 4,997.8	\$ 2,437.8	\$ 0.0	\$ 2,437.8	\$ 2,560.0
	Federal			\$ 7,931.3	\$ 4,124.5	\$ 0.0	\$ 4,124.5	\$ 3,806.8
	Other			\$ 87.1	\$ 0.0	\$ 0.0	\$ 0.0	\$ 87.1
FY 2006 Request	State			\$ 300.0				\$ 2,860.0
	Federal			\$ 2,700.0				\$ 6,506.8
	Other			\$ 0.0				\$ 87.1
FY 2007 Projected	State			\$ 88,250.0				\$ 91,110.0
	Federal			\$ 96,750.0				\$ 103,256.8
	Other			\$ 0.0				\$ 87.1
FY 2008 Projected	State							
	Federal							
	Other							
FY 2009-2011 Projected	State							
	Federal							
	Other							
Total Projected	State			\$ 103,780.4	\$ 12,670.4			\$ 91,110.0
	Federal			\$ 126,109.1	\$ 22,852.3			\$ 103,256.8
	Other			\$ 87.1	\$ 0.0			\$ 87.1
Total All Funds		\$ 190,661.0	\$ 229,976.6	\$ 229,976.6	\$ 35,522.7	\$ 6,450.6	\$ 29,072.1	\$ 194,454.0

I-95, MARYLAND STATE LINE TO SR141 (CONTINUED)**PROJECT TIMELINE INFORMATION**

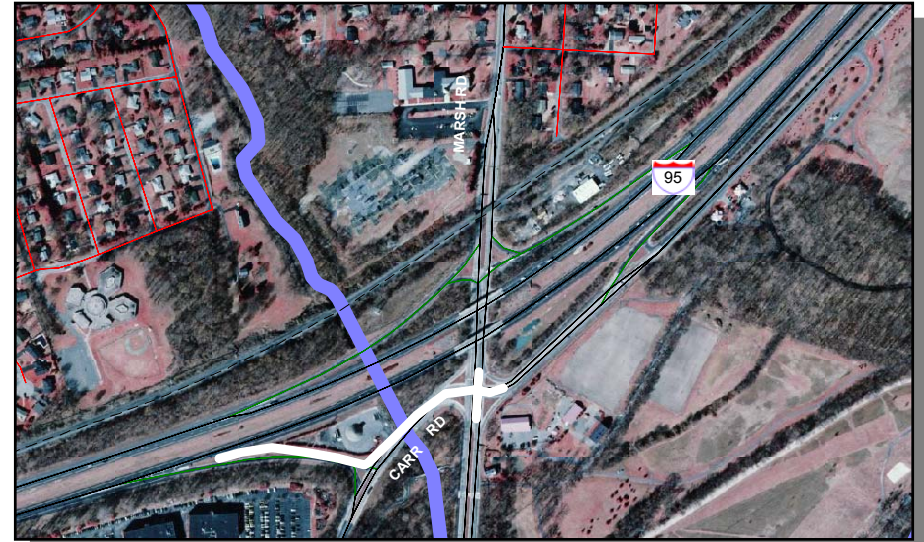
Project #	Description	Phase	Funding Schedule	Current Estimate	Prior Years	FY 2005	FY 2006	FY 2007	FY 2008	FY 2009 -2011
	I-95, Maryland State Line to SR141									
91-071-05	Churchman's Road Bridge	PE	80% FHWA	\$ 990.1	\$ 451.0	\$ 539.1	\$ 0.0	\$ 0.0	\$ 0.0	\$ 0.0
		RW	100% ST	200.0	200.0	0.0	0.0	0.0	0.0	0.0
		C	100% PRIVATE	87.1	0.0	87.1	0.0	0.0	0.0	0.0
		C	80% FHWA	16,000.0	12,800.0	3,200.0	0.0	0.0	0.0	0.0
23-690-03	I-95, Fifth Lane Expansion from Churchman's Bridge to SR141, Basin Road	PD	100% ST	190.0	0.0	190.0	0.0	0.0	0.0	0.0
		PE	80% FHWA	5,000.0	3,000.0	2,000.0	0.0	0.0	0.0	0.0
		C	90% FHWA	15,000.0	0.0	0.0	0.0	15,000.0	0.0	0.0
		C	90% DISC FHWA	15,000.0	0.0	0.0	0.0	15,000.0	0.0	0.0
	Planning and Formal Environmental Documentation	ENV	100% ST	7,879.4	7,879.4	0.0	0.0	0.0	0.0	0.0
25-090-01	SR 1 / I-95 Interchange	PD	90% FHWA	1,000.0	0.0	1,000.0	0.0	0.0	0.0	0.0
		PE	90% FHWA	5,000.0	0.0	2,000.0	3,000.0	0.0	0.0	0.0
		C	90% FHWA	52,630.0	2,630.0	0.0	0.0	50,000.0	0.0	0.0
		C	100% ST	50,000.0	0.0	0.0	0.0	50,000.0	0.0	0.0
	SR896, South College Avenue / I-95 Interchange, Rehabilitation	C	100% ST	0.0	0.0	0.0	0.0	0.0	0.0	0.0
24-090-03	Toll Plaza Rehabilitation and Highway Speed E-ZPass Improvements	PD	100% ST	1,000.0	1,000.0	0.0	0.0	0.0	0.0	0.0
		PE	80% FHWA	5,000.0	1,000.0	4,000.0	0.0	0.0	0.0	0.0
		C	90% FHWA	27,500.0	0.0	0.0	0.0	27,500.0	0.0	0.0
		C	100% ST	27,500.0	0.0	0.0	0.0	27,500.0	0.0	0.0
	Total All Funds			\$ 229,976.6	\$ 28,960.4	\$ 13,016.2	\$ 3,000.0	\$ 185,000.0	\$ 0.0	\$ 0.0

I-95, N213, CARR ROAD AND N 3, MARSH ROAD INTERCHANGE IMPROVEMENTS [ID No. 03-00034]

PROJECT SCOPE/DESCRIPTION: This area has been identified for possible congestion and capacity improvements. Project development will determine the type of improvements needed.

PROJECT JUSTIFICATION: This project was identified through the Highway Safety Improvement Program (HSIP).

County:	New Castle
Municipality:	
Funding Program:	Road System – Expressways
Functional Category:	Management
Representative District:	6
Senatorial District:	1



I-95, N213, CARR ROAD AND N 3, MARSH ROAD INTERCHANGE IMPROVEMENTS (CONTINUED)**PROJECT FUNDING INFORMATION**

Project	Funding Type	Original Estimate	Current Estimate	Authorization	Committed as of 12/31/04	Expended as of 12/31/04	Committed Unexpended as of 12/31/04	Authorization Available
I-95, N213, Carr Road and N 3, Marsh Road Interchange Improvements		\$ 1,000.0						
Prior Years	State			\$ 0.0	\$ 0.0	\$ 0.0	\$ 0.0	\$ 0.0
	Federal			\$ 0.0	\$ 0.0	\$ 0.0	\$ 0.0	\$ 0.0
	Other			\$ 0.0	\$ 0.0	\$ 0.0	\$ 0.0	\$ 0.0
FY 2005	State		\$ 1,000.0	\$ 0.0	\$ 0.0	\$ 0.0	\$ 0.0	\$ 0.0
	Federal			\$ 0.0	\$ 0.0	\$ 0.0	\$ 0.0	\$ 0.0
	Other			\$ 0.0	\$ 0.0	\$ 0.0	\$ 0.0	\$ 0.0
FY 2006 Request	State			\$ 0.0				\$ 0.0
	Federal			\$ 0.0				\$ 0.0
	Other			\$ 0.0				\$ 0.0
FY 2007 Projected	State			\$ 1,000.0				\$ 1,000.0
	Federal			\$ 0.0				\$ 0.0
	Other			\$ 0.0				\$ 0.0
FY 2008 Projected	State			\$ 0.0				\$ 1,000.0
	Federal			\$ 0.0				\$ 0.0
	Other			\$ 0.0				\$ 0.0
FY 2009-2011 Projected	State			\$ 0.0				\$ 1,000.0
	Federal			\$ 0.0				\$ 0.0
	Other			\$ 0.0				\$ 0.0
Total Projected	State			\$ 1,000.0	\$ 0.0			\$ 1,000.0
	Federal			\$ 0.0	\$ 0.0			\$ 0.0
	Other			\$ 0.0	\$ 0.0			\$ 0.0
Total All Funds		\$ 1,000.0	\$ 1,000.0	\$ 1,000.0	\$ 0.0	\$ 0.0	\$ 0.0	\$ 1,000.0

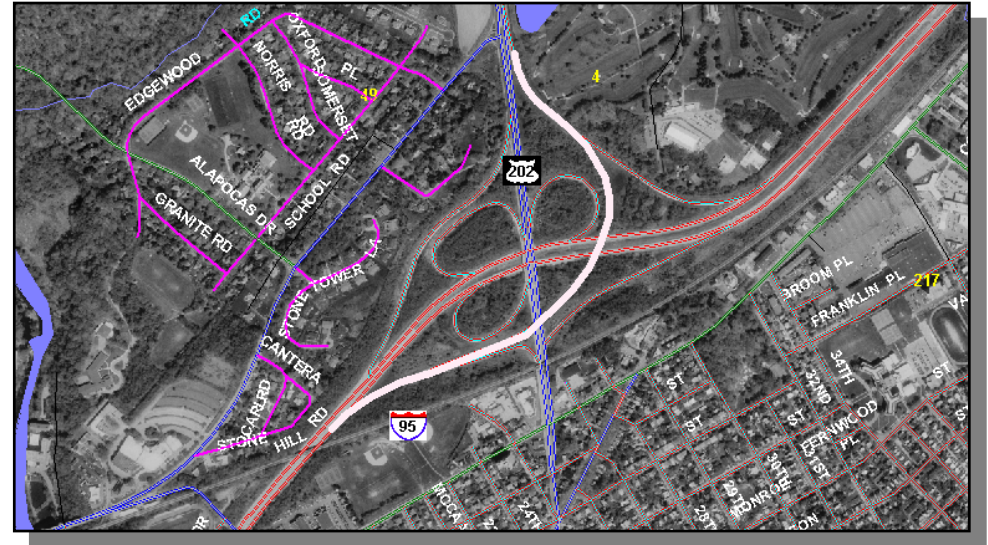
I-95, N213, CARR ROAD AND N 3, MARSH ROAD INTERCHANGE IMPROVEMENTS (CONTINUED)**PROJECT TIMELINE INFORMATION**

Project #	Description	Phase	Funding Schedule	Current Estimate	Prior Years	FY 2005	FY 2006	FY 2007	FY 2008	FY 2009 -2011
	I-95, N213, Carr Road and N 3, Marsh Road Interchange Improvements	PD	100% ST	\$ 1,000.0	\$ 0.0	\$ 0.0	\$ 0.0	\$ 1,000.0	\$ 0.0	\$ 0.0
	Total All Funds			\$ 1,000.0	\$ 0.0	\$ 0.0	\$ 0.0	\$ 1,000.0	\$ 0.0	\$ 0.0

I-95 / US202 INTERCHANGE [ID No. 04-00095]

PROJECT SCOPE/DESCRIPTION: This project will widen the existing ramp from northbound I-95 to northbound US202 in the I-95/US202 interchange from one to two lanes. Additionally, other ramp improvements will be made to address weaving problems and develop US202 gateway into the city.

PROJECT JUSTIFICATION: The current demand for use of this ramp backs traffic, at various times during the day, onto I-95 as far south as the City of Wilmington. In so doing, it effectively restricts the capacity of two lanes on I-95, where only three exist, and creates a safety problem. With the improvements to US202 as part of the Blue Ball Properties project, and the widening of this ramp, the capacity and safety issues on I-95 will be eliminated.



County:	New Castle
Municipality:	Wilmington
Funding Program:	Road System – Expressways
Functional Category:	Expansion
Representative District:	4, 6
Senatorial District:	1, 4



*I-95 / US202 INTERCHANGE (CONTINUED)***PROJECT FUNDING INFORMATION**

Project	Funding Type	Original Estimate	Current Estimate	Authorization	Committed as of 12/31/04	Expended as of 12/31/04	Committed Unexpended as of 12/31/04	Authorization Available
I-95 / US202 Interchange		\$ 22,900.0						
Prior Years	State			\$ 0.2	\$ 0.0	\$ 0.0	\$ 0.0	\$ 0.2
	Federal			\$ 0.0	\$ 0.0	\$ 0.0	\$ 0.0	\$ 0.0
	Other			\$ 0.0	\$ 0.0	\$ 0.0	\$ 0.0	\$ 0.0
FY 2005	State		\$ 3,000.2	\$ 3,000.0	\$ 0.0	\$ 0.0	\$ 0.0	\$ 3,000.2
	Federal			\$ 0.0	\$ 0.0	\$ 0.0	\$ 0.0	\$ 0.0
	Other			\$ 0.0	\$ 0.0	\$ 0.0	\$ 0.0	\$ 0.0
FY 2006 Request	State			\$ 0.0				\$ 3,000.2
	Federal			\$ 0.0				\$ 0.0
	Other			\$ 0.0				\$ 0.0
FY 2007 Projected	State							
	Federal							
	Other							
FY 2008 Projected	State							
	Federal							
	Other							
FY 2009-2011 Projected	State							
	Federal							
	Other							
Total Projected	State			\$ 3,000.2	\$ 0.0			\$ 3,000.2
	Federal			\$ 0.0	\$ 0.0			\$ 0.0
	Other			\$ 0.0	\$ 0.0			\$ 0.0
Total All Funds		\$ 22,900.0	\$ 3,000.2	\$ 3,000.2	\$ 0.0	\$ 0.0	\$ 0.0	\$ 3,000.2

I-95 / US202 INTERCHANGE (CONTINUED)**PROJECT TIMELINE INFORMATION**

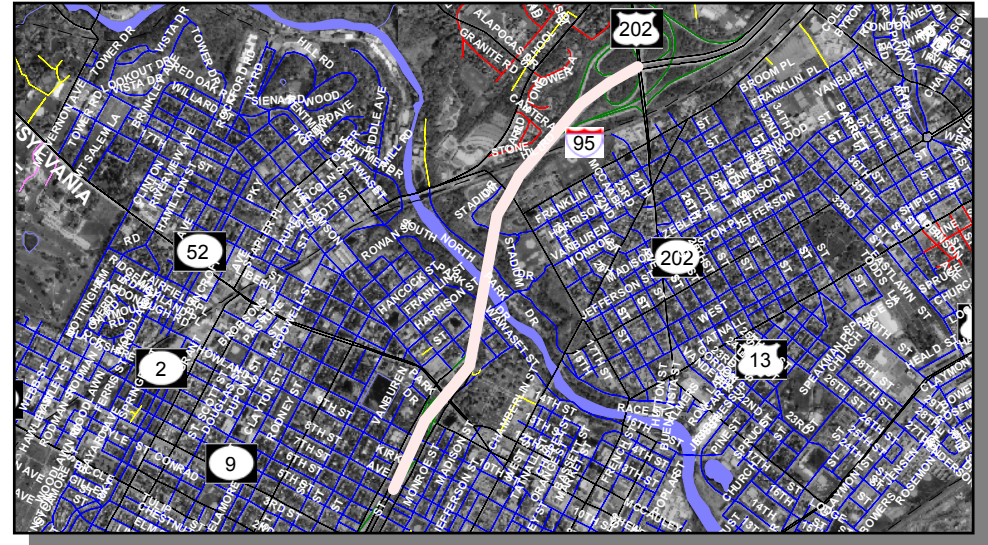
Project #	Description	Phase	Funding Schedule	Current Estimate	Prior Years	FY 2005	FY 2006	FY 2007	FY 2008	FY 2009 -2011
	I-95 / US202 Interchange	PE	100% ST	\$ 3,000.2	\$ 0.2	\$ 3,000.0	\$ 0.0	\$ 0.0	\$ 0.0	\$ 0.0
		C	90% FHWA	0.0	0.0	0.0	0.0	0.0	0.0	0.0
		C	100% ST	0.0	0.0	0.0	0.0	0.0	0.0	0.0
	Total All Funds			\$ 3,000.2	\$ 0.2	\$ 3,000.0	\$ 0.0	\$ 0.0	\$ 0.0	\$ 0.0

I-95, WILMINGTON VIADUCT TO US202 [Project No. 23-074-03]

PROJECT SCOPE/DESCRIPTION: This project includes the rehabilitation of existing bridges along I-95 from US202 to the Wilmington Viaduct including bridges along and over I-95. The project also includes resurfacing I-95 with an asphalt overlay from the Wilmington Viaduct to US202.

This work includes bearing replacements, concrete repairs, painting, etc. Also included are approach slab replacements on the Wilmington viaduct; a short-term mill and overlay for the pavement section through Wilmington; and major rehabilitation on the superstructure of the Brandywine Bridge including parapet walls, approach slab and the center joint.

PROJECT JUSTIFICATION: Due to bridge ratings, deterioration, vertical clearances, etc., these bridges require repair work to be completed. The roadway condition is in need of repair. The previous overlay was done in 1996. Full reconstruction of this section will be done in future years.



County:	New Castle
Municipality:	Wilmington
Funding Program:	Road System – Expressways
Functional Category:	Preservation
Representative District:	2, 3, 4
Senatorial District:	1, 2, 3



*I-95, WILMINGTON VIADUCT TO US202 (CONTINUED)***PROJECT FUNDING INFORMATION**

Project	Funding Type	Original Estimate	Current Estimate	Authorization	Committed as of 12/31/04	Expended as of 12/31/04	Committed Unexpended as of 12/31/04	Authorization Available
I-95, Wilmington Viaduct to US202		\$ 31,451.8						
Prior Years	State			\$ 14,571.0	\$ 4,191.0	\$ 766.0	\$ 3,425.0	\$ 10,380.0
	Federal			\$ 20,868.5	\$ 6,440.1	\$ 3,029.8	\$ 3,410.3	\$ 14,428.3
	Other			\$ 0.0	\$ 0.0	\$ 0.0	\$ 0.0	\$ 0.0
FY 2005	State		\$ 36,839.5	\$ 1,400.0	\$ 0.0	\$ 0.0	\$ 0.0	\$ 11,780.0
	Federal			\$ 0.0	\$ 0.0	\$ 0.0	\$ 0.0	\$ 14,428.3
	Other			\$ 0.0	\$ 0.0	\$ 0.0	\$ 0.0	\$ 0.0
FY 2006 Request	State							
	Federal							
	Other							
FY 2007 Projected	State							
	Federal							
	Other							
FY 2008 Projected	State							
	Federal							
	Other							
FY 2009-2011 Projected	State							
	Federal							
	Other			\$ 0.0				\$ 0.0
Total Projected	State			\$ 15,971.0	\$ 4,191.0			\$ 11,780.0
	Federal			\$ 20,868.5	\$ 6,440.1			\$ 14,428.3
	Other			\$ 0.0	\$ 0.0			\$ 0.0
Total All Funds		\$ 31,451.8	\$ 36,839.5	\$ 36,839.5	\$ 10,631.1	\$ 3,795.8	\$ 6,835.3	\$ 26,208.4

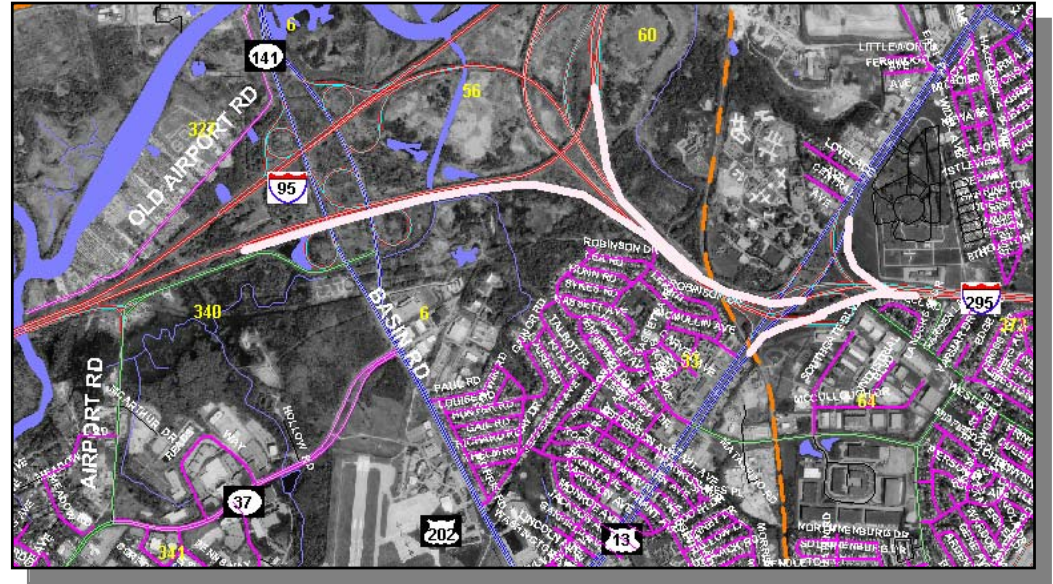
I-95, WILMINGTON VIADUCT TO US202 (CONTINUED)**PROJECT TIMELINE INFORMATION**

Project #	Description	Phase	Funding Schedule	Current Estimate	Prior Years	FY 2005	FY 2006	FY 2007	FY 2008	FY 2009 -2011
	I-95, Wilmington Viaduct to US202	PE	100% ST	\$ 9,354.0	\$ 9,354.0	\$ 0.0	\$ 0.0	\$ 0.0	\$ 0.0	\$ 0.0
		C	80% FHWA	11,215.7	11,215.7	0.0	0.0	0.0	0.0	0.0
	I-95, BR 1-746 to Wilmington Viaduct (Northbound and Southbound), Pavement Resurfacing	C	80% FHWA	487.7	487.7	0.0	0.0	0.0	0.0	0.0
23-074-03	I-95, Wilmington Bridges	PE	80% FHWA	496.0	496.0	0.0	0.0	0.0	0.0	0.0
		C	80% FHWA	10,386.1	10,386.1	0.0	0.0	0.0	0.0	0.0
	I-95, Wilmington Ramps	C	80% FHWA	581.5	581.5	0.0	0.0	0.0	0.0	0.0
	I-95, Wilmington Viaduct, Joint Replacements	C	80% FHWA	647.0	647.0	0.0	0.0	0.0	0.0	0.0
23-091-01	I-95, Wilmington Viaduct to US202, Pavement Resurfacing	C	80% FHWA	2,271.5	2,271.5	0.0	0.0	0.0	0.0	0.0
	Landscaping and Paving, Brandywine Park	PE, C	100% ST	1,400.0	0.0	1,400.0	0.0	0.0	0.0	0.0
	Total All Funds			\$ 36,839.5	\$ 35,439.5	\$ 1,400.0	\$ 0.0	\$ 0.0	\$ 0.0	\$ 0.0

I-295 IMPROVEMENTS [ID No. 04-00675]

PROJECT SCOPE/DESCRIPTION: In FY 2000, the Delaware River and Bay Authority (DRBA) began a five to six-year rehabilitation project on all the approaches and ramps on the west side of the Delaware Memorial Bridge. The work involves the rehabilitation of the existing pavement, replacement or rehabilitation of bridges, the erection of new high mast light standards, surveillance cameras, electronic signage, and the installation of *E-ZPass* readers at the toll plaza. The ultimate objectives are to eliminate dangerous weaving traffic patterns and to provide a new road surface for the entire network. Construction on the eastbound lanes was completed in FY 2000, and the work closest to the bridge on the westbound lanes is currently under construction.

DelDOT currently maintains I-295 west of Bridges 1-008E and 1-008W. DRBA is responsible for the remaining portion on I-295 up to and including the Delaware Memorial Bridge. New planned improvements will be a joint effort by DelDOT and DRBA. DRBA will design and manage the improvements with oversight from DelDOT.



Improvements will include:

- **DRBA Bridges** – As noted above, DelDOT maintains Bridges 1-008E and 1-008W. These bridges are located over an abandoned railroad. Plans are underway to encapsulate and fill in the areas under the bridges. This is projected to save bridge maintenance funds in future years. An agreement between DelDOT and DRBA has been signed that will make DRBA responsible to rebuild the bridges if and when a commuter rail line is constructed. Although there are no current plans to construct a rail line, this does remain a viable option in the future.
- **Lighting** - installation of ten new light standards at \$100,000 each - This cost covers procurement, installation, maintenance, and 30 years worth of electricity, with rate increases paid by DRBA. The light standards will be within the limits of DelDOT maintenance responsibilities for I-295 and US 13. The length of the project is from 1,500-feet west of the Interstate Connection of northbound I-95/I-295 to 2,400-feet west of US 13.
- **Third Lane Expansion from SR141 to SR 9** – DRBA and DelDOT will continue to work together on the I-95/I-295 interchange issues to study lane flexibility and reach a decision that is best for all, at the most effective cost. During peak periods, the current two-lane configuration is not adequate. This has been modeled, and there are no air quality issues. The length of the project is from I-95/SR141 Interchange to 2,400-feet west of US 13.

I-295 IMPROVEMENTS (CONTINUED)

- **Weave Elimination from I-95 to US 13** - a collector and distributor slip ramp with mill and overlay on I-295 - DRBA has developed a concept that will solve the existing weave problem from southbound I-95 to eastbound I-295 to southbound US 13. This solution incorporates a collector/distributor (C/D) ramp and barrier to preclude the weave and offers optional routes to replace the moves eliminated by the barrier. DRBA will remove the current ramps from southbound US 13 to the eastbound bridge and construct a new access which will require motorists to travel further south on US 13, and then make a cross traffic turn to get onto the Delaware Memorial Bridge. DRBA, DelDOT, and the Federal Highway Administration (FHWA) engineers have analyzed this traffic volume and believe it is light enough to warrant the new pattern. An overlay and pavement rehabilitation to I-295 will also be done. The length of the project is from the Interstate Connection of northbound I-95/I-295 to 2,400-feet west of US 13.
- **Westbound US 13 to I-95** - Pavement reconstruction of I-295 west of US 13 to I-95 will also be completed.

PROJECT JUSTIFICATION: This project will address the difficult traffic weave patterns between I-295 from the Delaware Memorial Bridge to US 13, and I-95 northbound and southbound by eliminating the safety problems in the area.

County:

Municipality:

Funding Program:

Functional Category:

Representative District:

Senatorial District:

New Castle

Road System – Expressways

Preservation

16, 17

2, 13



*I-295 IMPROVEMENTS (CONTINUED)***PROJECT FUNDING INFORMATION**

Project	Funding Type	Original Estimate	Current Estimate	Authorization	Committed as of 12/31/04	Expended as of 12/31/04	Committed Unexpended as of 12/31/04	Authorization Available
I-295 Improvements		\$ 14,300.0						
Prior Years	State			\$ 3,700.0	\$ 3,117.0	\$ 0.0	\$ 3,117.0	\$ 583.0
	Federal			\$ 0.0	\$ 0.0	\$ 0.0	\$ 0.0	\$ 0.0
	Other			\$ 0.0	\$ 0.0	\$ 0.0	\$ 0.0	\$ 0.0
FY 2005	State		\$ 18,300.0	\$ 1,000.0	\$ 0.0	\$ 0.0	\$ 0.0	\$ 1,583.0
	Federal			\$ 0.0	\$ 0.0	\$ 0.0	\$ 0.0	\$ 0.0
	Other			\$ 0.0	\$ 0.0	\$ 0.0	\$ 0.0	\$ 0.0
FY 2006 Request	State			\$ 3,000.0				\$ 4,583.0
	Federal			\$ 0.0				\$ 0.0
	Other			\$ 0.0				\$ 0.0
FY 2007 Projected	State			\$ 4,000.0				\$ 8,583.0
	Federal			\$ 0.0				\$ 0.0
	Other			\$ 0.0				\$ 0.0
FY 2008 Projected	State			\$ 6,600.0				\$ 15,183.0
	Federal			\$ 0.0				\$ 0.0
	Other			\$ 0.0				\$ 0.0
FY 2009-2011 Projected	State							
	Federal							
	Other							
Total Projected	State			\$ 18,300.0	\$ 3,117.0			\$ 15,183.0
	Federal			\$ 0.0	\$ 0.0			\$ 0.0
	Other			\$ 0.0	\$ 0.0			\$ 0.0
Total All Funds		\$ 14,300.0	\$ 18,300.0	\$ 18,300.0	\$ 3,117.0	\$ 0.0	\$ 3,117.0	\$ 15,183.0

I-295 IMPROVEMENTS (CONTINUED)**PROJECT TIMELINE INFORMATION**

Project #	Description	Phase	Funding Schedule	Current Estimate	Prior Years	FY 2005	FY 2006	FY 2007	FY 2008	FY 2009 -2011
	I-295 Improvements									
	DRBA Bridges	PE	100% ST	\$ 300.0	\$ 0.0	\$ 300.0	\$ 0.0	\$ 0.0	\$ 0.0	\$ 0.0
		C	100% ST	1,200.0	0.0	200.0	1,000.0	0.0	0.0	0.0
	Lighting	C	100% ST	1,000.0	1,000.0	0.0	0.0	0.0	0.0	0.0
	Third Lane Expansion from SR141 to SR 9	PD	100% ST	500.0	400.0	0.0	100.0	0.0	0.0	0.0
		PE	100% ST	1,500.0	0.0	0.0	0.0	1,500.0	0.0	0.0
		C	100% ST	6,600.0	0.0	0.0	0.0	0.0	6,600.0	0.0
	Weave Elimination from I-95 to US 13	C	100% ST	4,200.0	2,300.0	0.0	1,900.0	0.0	0.0	0.0
	Westbound, US 13 to I-95	PE	100% ST	500.0	0.0	500.0	0.0	0.0	0.0	0.0
		C	100% ST	2,500.0	0.0	0.0	0.0	2,500.0	0.0	0.0
	Total All Funds			\$ 18,300.0	\$ 3,700.0	\$ 1,000.0	\$ 3,000.0	\$ 4,000.0	\$ 6,600.0	\$ 0.0