

BR 1-660 AND BR 1-664 ON US 13, SOUTHWEST OF NEW CASTLE [Project No. 24-074-05]

PROJECT SCOPE/DESCRIPTION: The proposed work for both bridges will include patching of spalls and sealing of cracks in the existing concrete. Riprap will be placed throughout Bridge 1-660 and at the entrance and exit of Bridge 1-664 to protect the two bridges from the effects of scour. Guardrail improvements will be made as necessary.

PROJECT JUSTIFICATION: Both existing bridges are concrete frames in poor condition. Each structure has extensive cracking and spalling throughout. Bridge 1-660 and Bridge 1-664 are currently ranked 219th and 65th, respectively, out of 1,399 on the bridge deficiency list (via the bridge management system).

County:	New Castle
Municipality:	
Funding Program:	Road System – Bridges
Functional Category:	Preservation
Representative District:	15, 17
Senatorial District:	12



BR 1-660 AND BR 1-664 ON US 13, SOUTHWEST OF NEW CASTLE (CONTINUED)

Bridge 1-660



Bridge 1-664



BR 1-660 AND BR 1-664 ON US 13, SOUTHWEST OF NEW CASTLE (CONTINUED)**PROJECT FUNDING INFORMATION**

Project	Funding Type	Original Estimate	Current Estimate	Authorization	Committed as of 12/31/04	Expended as of 12/31/04	Committed Unexpended as of 12/31/04	Authorization Available
BR 1-660 and BR 1-664 on US 13, Southwest of New Castle		\$ 580.0						
Prior Years	State			\$ 23.0	\$ 23.0	\$ 1.5	\$ 21.5	\$ 0.0
	Federal			\$ 92.0	\$ 84.0	\$ 6.2	\$ 77.8	\$ 8.0
	Other			\$ 0.0	\$ 0.0	\$ 0.0	\$ 0.0	\$ 0.0
FY 2005	State		\$ 580.0	\$ 9.0	\$ 9.0	\$ 0.0	\$ 9.0	\$ 0.0
	Federal			\$ 36.0	\$ 0.0	\$ 0.0	\$ 0.0	\$ 44.0
	Other			\$ 0.0	\$ 0.0	\$ 0.0	\$ 0.0	\$ 0.0
FY 2006 Request	State			\$ 84.0				\$ 84.0
	Federal			\$ 336.0				\$ 380.0
	Other			\$ 0.0				\$ 0.0
FY 2007 Projected	State							
	Federal							
	Other							
FY 2008 Projected	State							
	Federal							
	Other							
FY 2009-2011 Projected	State							
	Federal							
	Other							
Total Projected	State			\$ 116.0	\$ 32.0			\$ 84.0
	Federal			\$ 464.0	\$ 84.0			\$ 380.0
	Other			\$ 0.0	\$ 0.0			\$ 0.0
Total All Funds		\$ 580.0	\$ 580.0	\$ 580.0	\$ 116.0	\$ 7.7	\$ 108.3	\$ 464.0

BR 1-660 AND BR 1-664 ON US 13, SOUTHWEST OF NEW CASTLE (CONTINUED)**PROJECT TIMELINE INFORMATION**

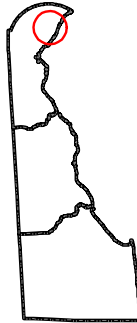
Project #	Description	Phase	Funding Schedule	Current Estimate	Prior Years	FY 2005	FY 2006	FY 2007	FY 2008	FY 2009 -2011
24-074-05	BR 1-660 and BR 1-664 on US 13, Southwest of New Castle	PE	80% FHWA	\$ 115.0	\$ 115.0	\$ 0.0	\$ 0.0	\$ 0.0	\$ 0.0	\$ 0.0
		RW	80% FHWA	45.0	0.0	45.0	0.0	0.0	0.0	0.0
		C	80% FHWA	420.0	0.0	0.0	420.0	0.0	0.0	0.0
	Total All Funds			\$ 580.0	\$ 115.0	\$ 45.0	\$ 420.0	\$ 0.0	\$ 0.0	\$ 0.0

BR 1-687, SOUTH WALNUT STREET AND BR 1-688, SOUTH MARKET STREET OVER CHRISTINA RIVER

PROJECT SCOPE/DESCRIPTION: This project will improve the aesthetics of Bridge 1-688 (South Market Street Bridge) and Bridge 1-687 (Walnut Street Bridge) over the Christina River in Wilmington. Project goals include new sidewalks on the bridges, up-lighting of the bridges and painting.

PROJECT JUSTIFICATION: The improvements will enhance the pedestrian environment in the area in support of the residential and commercial development of the Christina's south bank between Market and Walnut Street. It will also help to beautify an area which was previously industrial in character.

County:	New Castle
Municipality:	Wilmington
Funding Program:	Road System – Bridges
Functional Category:	Management
Representative District:	2, 16
Senatorial District:	2, 3



BR 1-687, SOUTH WALNUT STREET AND BR 1-688, SOUTH MARKET STREET OVER CHRISTINA RIVER (CONTINUED)**PROJECT FUNDING INFORMATION**

Project	Funding Type	Original Estimate	Current Estimate	Authorization	Committed as of 12/31/04	Expended as of 12/31/04	Committed Unexpended as of 12/31/04	Authorization Available
BR 1-687, South Walnut Street and BR 1-688, South Market Street over Christina River		\$ 5,600.0						
Prior Years	State			\$ 400.0	\$ 0.0	\$ 0.0	\$ 0.0	\$ 400.0
	Federal			\$ 0.0	\$ 0.0	\$ 0.0	\$ 0.0	\$ 0.0
	Other			\$ 0.0	\$ 0.0	\$ 0.0	\$ 0.0	\$ 0.0
FY 2005	State		\$ 4,600.0	\$ 0.0	\$ 0.0	\$ 0.0	\$ 0.0	\$ 400.0
	Federal			\$ 0.0	\$ 0.0	\$ 0.0	\$ 0.0	\$ 0.0
	Other			\$ 0.0	\$ 0.0	\$ 0.0	\$ 0.0	\$ 0.0
FY 2006 Request	State			\$ 4,200.0				\$ 4,600.0
	Federal			\$ 0.0				\$ 0.0
	Other			\$ 0.0				\$ 0.0
FY 2007 Projected	State							
	Federal							
	Other							
FY 2008 Projected	State							
	Federal							
	Other							
FY 2009-2011 Projected	State							
	Federal							
	Other							
Total Projected	State			\$ 4,600.0	\$ 0.0			\$ 4,600.0
	Federal			\$ 0.0	\$ 0.0			\$ 0.0
	Other			\$ 0.0	\$ 0.0			\$ 0.0
Total All Funds		\$ 5,600.0	\$ 4,600.0	\$ 4,600.0	\$ 0.0	\$ 0.0	\$ 0.0	\$ 4,600.0

BR 1-687, SOUTH WALNUT STREET AND BR 1-688, SOUTH MARKET STREET OVER CHRISTINA RIVER (CONTINUED)**PROJECT TIMELINE INFORMATION**

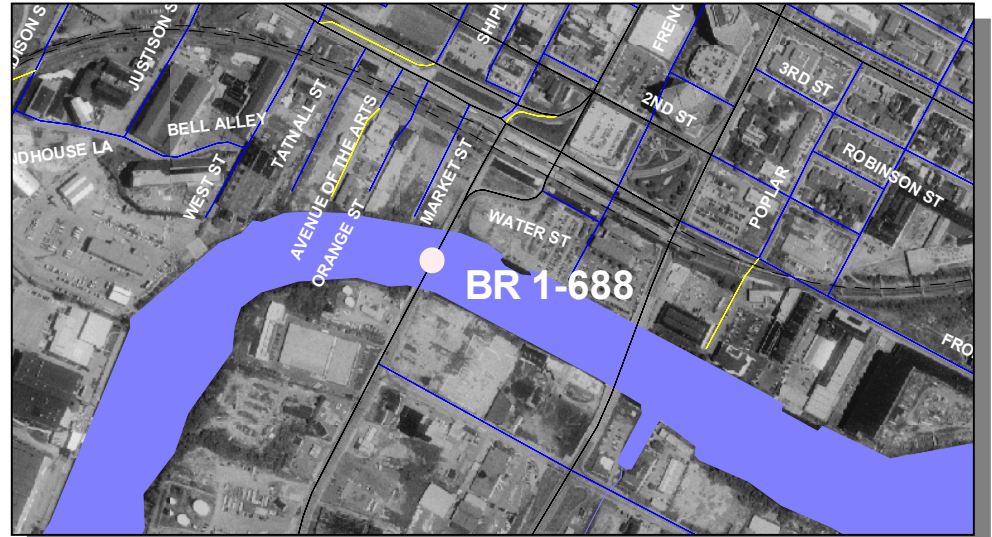
Project #	Description	Phase	Funding Schedule	Current Estimate	Prior Years	FY 2005	FY 2006	FY 2007	FY 2008	FY 2009 -2011
	BR 1-687, South Walnut Street and BR 1-688, South Market Street over Christina River	PE	100% ST	\$ 600.0	\$ 400.0	\$ 0.0	\$ 200.0	\$ 0.0	\$ 0.0	\$ 0.0
		C	100% ST	4,000.0	0.0	0.0	4,000.0	0.0	0.0	0.0
	Total All Funds			\$ 4,600.0	\$ 400.0	\$ 0.0	\$ 4,200.0	\$ 0.0	\$ 0.0	\$ 0.0

BR 1-688 ON SOUTH MARKET STREET OVER CHRISTINA RIVER [Project No. 21-074-07]

PROJECT SCOPE/DESCRIPTION: Bridge 1-688 is a double leaf drawbridge, which spans the Christina River. An in-depth inspection of the structural, mechanical and electrical systems was conducted. Improvements include repairs to the structure steel, electrical system and the mechanical gearing.

PROJECT JUSTIFICATION: Bridge 1-688 is functionally obsolete and ranks 30th out of 1,399 on the department's bridge deficiency list (via the bridge management program).

County:	New Castle
Municipality:	Wilmington
Funding Program:	Road System – Bridges
Functional Category:	Preservation
Representative District:	2, 16
Senatorial District:	2, 3



BR 1-688 ON SOUTH MARKET STREET OVER CHRISTINA RIVER (CONTINUED)**PROJECT FUNDING INFORMATION**

Project	Funding Type	Original Estimate	Current Estimate	Authorization	Committed as of 12/31/04	Expended as of 12/31/04	Committed Unexpended as of 12/31/04	Authorization Available
BR 1-688 on South Market Street over Christina River		\$ 8,600.0						
Prior Years	State			\$ 1,880.0	\$ 1,842.4	\$ 675.3	\$ 1,167.1	\$ 37.6
	Federal			\$ 6,720.0	\$ 6,121.2	\$ 2,701.1	\$ 3,420.1	\$ 598.8
	Other			\$ 0.0	\$ 0.0	\$ 0.0	\$ 0.0	\$ 0.0
FY 2005	State		\$ 10,422.0	\$ 364.4	\$ 0.0	\$ 0.0	\$ 0.0	\$ 402.0
	Federal			\$ 1,457.6	\$ 0.0	\$ 0.0	\$ 0.0	\$ 2,056.4
	Other			\$ 0.0	\$ 0.0	\$ 0.0	\$ 0.0	\$ 0.0
FY 2006 Request	State							
	Federal							
	Other							
FY 2007 Projected	State							
	Federal							
	Other							
FY 2008 Projected	State							
	Federal							
	Other							
FY 2009-2011 Projected	State							
	Federal							
	Other							
Total Projected	State			\$ 2,244.4	\$ 1,842.4			\$ 402.0
	Federal			\$ 8,177.6	\$ 6,121.2			\$ 2,056.4
	Other			\$ 0.0	\$ 0.0			\$ 0.0
Total All Funds		\$ 8,600.0	\$ 10,422.0	\$ 10,422.0	\$ 7,963.6	\$ 3,376.3	\$ 4,587.3	\$ 2,458.4

BR 1-688 ON SOUTH MARKET STREET OVER CHRISTINA RIVER (CONTINUED)**PROJECT TIMELINE INFORMATION**

Project #	Description	Phase	Funding Schedule	Current Estimate	Prior Years	FY 2005	FY 2006	FY 2007	FY 2008	FY 2009 -2011
21-074-07	BR 1-688 on South Market Street over Christina River	PE	100% ST	\$ 200.0	\$ 200.0	\$ 0.0	\$ 0.0	\$ 0.0	\$ 0.0	\$ 0.0
		C	80% FHWA	10,222.0	8,400.0	1,822.0	0.0	0.0	0.0	0.0
	Total All Funds			\$ 10,422.0	\$ 8,600.0	\$ 1,822.0	\$ 0.0	\$ 0.0	\$ 0.0	\$ 0.0

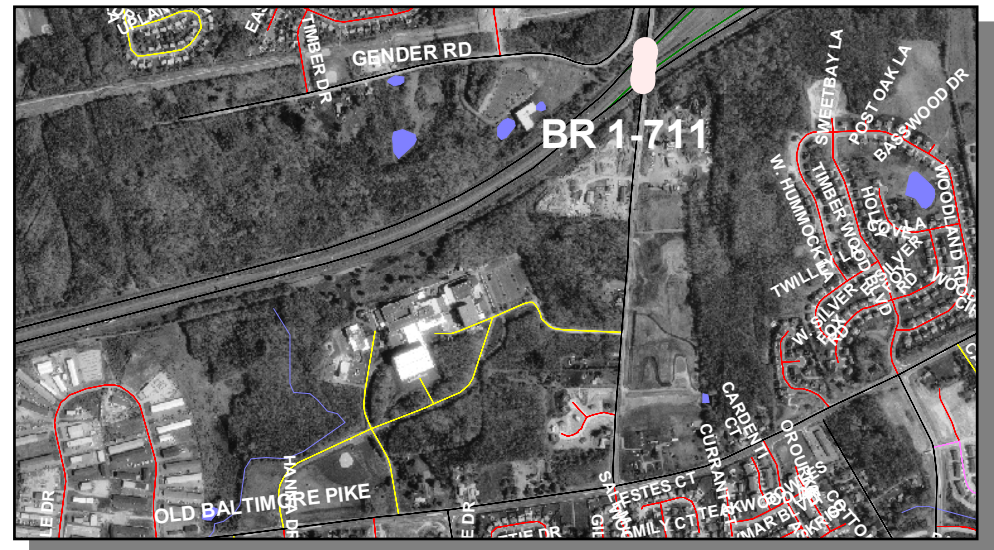
BR 1-708 AND BR 1-709 ON I-95 OVER SR 72, SUNSET LAKE ROAD AND BR 1-711 ON N 48, SALEM CHURCH ROAD OVER I-95
[Project No. 22-074-08]

PROJECT SCOPE/DESCRIPTION: In order to maintain the interstate system and prolong premature replacement of its bridges, work will be performed as follows: replace the expansion bearings; replace portions of the approach slabs and backwalls on the abutments; replace the joint seals to prevent moisture intrusion, rehabilitate the substructure units by crack sealing and waterproofing the surfaces; repair the structural steel; clean and paint the structural steel and replace the trough system beneath the finger joints.

PROJECT JUSTIFICATION: Bridges 1-708 and 1-709 on I-95 over SR 72, Sunset Lake Road and Bridge 1-711 on N 48, Salem Church Road over I-95 are located in the Newark portion of the Delaware Turnpike that is a critical asset for the state. These projects are grouped together because of their close proximity with each other. Bridges 1-708, 1-709, and 1-711 are in need of repair to maintain their serviceability and are currently ranked 35th, 21st, and 77th, respectively, out of 1,399 on the department's bridge deficiency list (via the bridge management program).



County:	New Castle
Municipality:	
Funding Program:	Road System – Bridges
Functional Category:	Preservation
Representative District:	24, 25, 26
Senatorial District:	10, 11



BR 1-708 AND BR 1-709 ON I-95 OVER SR 72, SUNSET LAKE ROAD AND BR 1-711 ON N 48, SALEM CHURCH ROAD OVER I-95 (CONTINUED)

Bridge 1-708



Bridge 1-709



BR 1-708 AND BR 1-709 ON I-95 OVER SR 72, SUNSET LAKE ROAD AND BR 1-711 ON N 48, SALEM CHURCH ROAD OVER I-95 (CONTINUED)

Bridge 1-711



BR 1-708 AND BR 1-709 ON I-95 OVER SR 72, SUNSET LAKE ROAD AND BR 1-711 ON N 48, SALEM CHURCH ROAD OVER I-95 (CONTINUED)**PROJECT FUNDING INFORMATION**

Project	Funding Type	Original Estimate	Current Estimate	Authorization	Committed as of 12/31/04	Expended as of 12/31/04	Committed Unexpended as of 12/31/04	Authorization Available
BR 1-708 and BR 1-709 on I-95 over SR 72, Sunset Lake Road and BR 1-711 on N 48, Salem Church Road over I-95		\$ 4,250.4						
Prior Years	State			\$ 721.0	\$ 721.0	\$ 38.9	\$ 682.0	\$ 0.0
	Federal			\$ 4,151.6	\$ 4,151.6	\$ 350.2	\$ 3,801.4	\$ 0.0
	Other			\$ 0.0	\$ 0.0	\$ 0.0	\$ 0.0	\$ 0.0
FY 2005	State		\$ 11,672.6	\$ 680.0	\$ 680.0	\$ 0.0	\$ 680.0	\$ 0.0
	Federal			\$ 6,120.0	\$ 5,417.6	\$ 0.0	\$ 5,417.6	\$ 702.4
	Other			\$ 0.0	\$ 0.0	\$ 0.0	\$ 0.0	\$ 0.0
FY 2006 Request	State							
	Federal							
	Other							
FY 2007 Projected	State							
	Federal							
	Other							
FY 2008 Projected	State							
	Federal							
	Other							
FY 2009-2011 Projected	State							
	Federal							
	Other							
Total Projected	State			\$ 1,401.0	\$ 1,401.0			\$ 0.0
	Federal			\$ 10,271.6	\$ 9,569.2			\$ 702.4
	Other			\$ 0.0	\$ 0.0			\$ 0.0
Total All Funds		\$ 4,250.4	\$ 11,672.6	\$ 11,672.6	\$ 10,970.2	\$ 389.2	\$ 10,581.0	\$ 702.4

BR 1-708 AND BR 1-709 ON I-95 OVER SR 72, SUNSET LAKE ROAD AND BR 1-711 ON N 48, SALEM CHURCH ROAD OVER I-95 (CONTINUED)**PROJECT TIMELINE INFORMATION**

Project #	Description	Phase	Funding Schedule	Current Estimate	Prior Years	FY 2005	FY 2006	FY 2007	FY 2008	FY 2009 -2011
22-074-08	BR 1-708 and BR 1-709 on I-95 over SR 72, Sunset Lake Road and BR 1-711 on N 48, Salem Church Road over I-95	PE	90% FHWA	\$ 4,612.8	\$ 4,612.8	\$ 0.0	\$ 0.0	\$ 0.0	\$ 0.0	\$ 0.0
		C	90% FHWA	6,800.0	0.0	6,800.0	0.0	0.0	0.0	0.0
		RW	100% ST	259.8	259.8	0.0	0.0	0.0	0.0	0.0
	Total All Funds			\$ 11,672.6	\$ 4,872.6	\$ 6,800.0	\$ 0.0	\$ 0.0	\$ 0.0	\$ 0.0