

BR 1-361 ON SR 72, SUNSET LAKE ROAD OVER MUDDY RUN, SOUTH OF NEWARK [Project No. 22-071-03]

PROJECT SCOPE/DESCRIPTION: Bridge 1-361 on SR 72, Sunset Lake Road is located south of Newark. Work on this bridge to extend the life of the structure includes replacement of the existing prestressed concrete beams in kind, repair of the existing concrete substructure, placement of scour countermeasures, upgrade of terminal ends of guardrail and minimal approach roadway work. Construction has been completed on this bridge and the road has been reopened to traffic.

PROJECT JUSTIFICATION: The bridge is in need of repair to extend the life of the structure and maintain its structural capacity and is currently ranked 92nd out of 1,399 on the department's bridge deficiency list (via the bridge management program).



County:	New Castle
Municipality:	
Funding Program:	Road System – Bridges
Functional Category:	Preservation
Representative District:	24, 27
Senatorial District:	10



Bridge 1-361



BR 1-361 ON SR 72, SUNSET LAKE ROAD OVER MUDDY RUN, SOUTH OF NEWARK (CONTINUED)**PROJECT FUNDING INFORMATION**

Project	Funding Type	Original Estimate	Current Estimate	Authorization	Committed as of 12/31/04	Expended as of 12/31/04	Committed Unexpended as of 12/31/04	Authorization Available
BR 1-361 on SR 72, Sunset Lake Road over Muddy Run, South of Newark		\$ 464.1						
Prior Years	State			\$ 464.1	\$ 387.6	\$ 307.3	\$ 80.3	\$ 76.5
	Federal			\$ 0.0	\$ 0.0	\$ 0.0	\$ 0.0	\$ 0.0
	Other			\$ 0.0	\$ 0.0	\$ 0.0	\$ 0.0	\$ 0.0
FY 2005	State		\$ 464.1	\$ 0.0	\$ 0.0	\$ 0.0	\$ 0.0	\$ 76.5
	Federal			\$ 0.0	\$ 0.0	\$ 0.0	\$ 0.0	\$ 0.0
	Other			\$ 0.0	\$ 0.0	\$ 0.0	\$ 0.0	\$ 0.0
FY 2006 Request	State							
	Federal							
	Other							
FY 2007 Projected	State							
	Federal							
	Other							
FY 2008 Projected	State							
	Federal							
	Other							
FY 2009-2011 Projected	State							
	Federal							
	Other							
Total Projected	State			\$ 464.1	\$ 387.6			\$ 76.5
	Federal			\$ 0.0	\$ 0.0			\$ 0.0
	Other			\$ 0.0	\$ 0.0			\$ 0.0
Total All Funds		\$ 464.1	\$ 464.1	\$ 464.1	\$ 387.6	\$ 307.3	\$ 80.3	\$ 76.5

BR 1-361 ON SR 72, SUNSET LAKE ROAD OVER MUDDY RUN, SOUTH OF NEWARK (CONTINUED)**PROJECT TIMELINE INFORMATION**

Project #	Description	Phase	Funding Schedule	Current Estimate	Prior Years	FY 2005	FY 2006	FY 2007	FY 2008	FY 2009 -2011
22-071-03	BR 1-361 on SR 72, Sunset Lake Road over Muddy Run, South of Newark	PE	100% ST	\$ 60.0	\$ 60.0	\$ 0.0	\$ 0.0	\$ 0.0	\$ 0.0	\$ 0.0
		RW	100% ST	0.0	0.0	0.0	0.0	0.0	0.0	0.0
		C	100% ST	404.1	404.1	0.0	0.0	0.0	0.0	0.0
	Total All Funds			\$ 464.1	\$ 464.1	\$ 0.0	\$ 0.0	\$ 0.0	\$ 0.0	\$ 0.0

BR 1-394N AND BR 1-394S ON US 13 OVER DRAWYERS CREEK [Project No. 23-071-02]

PROJECT SCOPE/DESCRIPTION: The proposed work for Bridge 1-394N is currently being studied. At the least, it will consist of repairing the delaminations in the existing concrete deck underside and substructure, re-jacketing and repairing the piles, and repairing the slope stabilization. It could potentially be a total bridge replacement, depending on the outcome of the study.

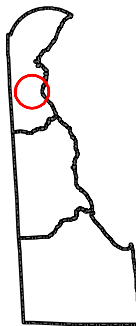
The proposed work for Bridge 1-394S will consist of minor repairs to the approaches and possible slope stabilization.

PROJECT JUSTIFICATION: The existing Bridge 1-394N is a six-span concrete slab bridge and is in moderately poor condition. All of the existing concrete piles need to be re-jacketed to protect them from further deterioration. A few of these piles also need to be repaired for concrete delaminations. The existing concrete abutments and wingwalls have areas of spalling that need to be addressed. The slope stabilization protection also needs to be repaired. Bridge 1-394N is currently ranked 103rd out of 1,399 on the bridge deficiency list (via the bridge management program).



The approaches to Bridge 1-394S are in need of repair due to erosion of the embankment caused by a meander in the river. This bridge is also located adjacent to Bridge 1-394N with a ranking of 350th out of 1,399 on the bridge deficiency list (via the bridge management program).

County:	New Castle
Municipality:	
Funding Program:	Road System – Bridges
Functional Category:	Preservation
Representative District:	8, 9
Senatorial District:	14



BR 1-394N AND BR 1-394S ON US 13 OVER DRAWYERS CREEK (CONTINUED)

Bridge 1-394N



Inside Bridge 1-394N



Bridge 1-394S



Underside of Bridge 1-394S



BR 1-394N AND BR 1-394S ON US 13 OVER DRAWYERS CREEK (CONTINUED)**PROJECT FUNDING INFORMATION**

Project	Funding Type	Original Estimate	Current Estimate	Authorization	Committed as of 12/31/04	Expended as of 12/31/04	Committed Unexpended as of 12/31/04	Authorization Available
BR 1-394N and BR 1-395S on US 13 over Drawyers Creek		\$ 420.0						
Prior Years	State			\$ 420.0	\$ 420.0	\$ 81.1	\$ 338.9	\$ 0.0
	Federal			\$ 0.0	\$ 0.0	\$ 0.0	\$ 0.0	\$ 0.0
	Other			\$ 0.0	\$ 0.0	\$ 0.0	\$ 0.0	\$ 0.0
FY 2005	State		\$ 420.0	\$ 0.0	\$ 0.0	\$ 0.0	\$ 0.0	\$ 0.0
	Federal			\$ 0.0	\$ 0.0	\$ 0.0	\$ 0.0	\$ 0.0
	Other			\$ 0.0	\$ 0.0	\$ 0.0	\$ 0.0	\$ 0.0
FY 2006 Request	State			\$ 0.0				\$ 0.0
	Federal			\$ 0.0				\$ 0.0
	Other			\$ 0.0				\$ 0.0
FY 2007 Projected	State			\$ 0.0				\$ 0.0
	Federal			\$ 0.0				\$ 0.0
	Other			\$ 0.0				\$ 0.0
FY 2008 Projected	State			\$ 0.0				\$ 0.0
	Federal			\$ 0.0				\$ 0.0
	Other			\$ 0.0				\$ 0.0
FY 2009-2011 Projected	State			\$ 0.0				\$ 0.0
	Federal			\$ 0.0				\$ 0.0
	Other			\$ 0.0				\$ 0.0
Total Projected	State			\$ 420.0	\$ 420.0			\$ 0.0
	Federal			\$ 0.0	\$ 0.0			\$ 0.0
	Other			\$ 0.0	\$ 0.0			\$ 0.0
Total All Funds		\$ 420.0	\$ 420.0	\$ 420.0	\$ 420.0	\$ 81.1	\$ 338.9	\$ 0.0

BR 1-394N AND BR 1-394S ON US 13 OVER DRAWYERS CREEK (CONTINUED)**PROJECT TIMELINE INFORMATION**

Project #	Description	Phase	Funding Schedule	Current Estimate	Prior Years	FY 2005	FY 2006	FY 2007	FY 2008	FY 2009 -2011
23-071-02	BR 1-394N and BR 1-394S on US 13 over Drawyers Creek	PE	100% ST	\$ 420.0	\$ 420.0	\$ 0.0	\$ 0.0	\$ 0.0	\$ 0.0	\$ 0.0
		RW	100% ST	0.0	0.0	0.0	0.0	0.0	0.0	0.0
		C	80% FHWA	0.0	0.0	0.0	0.0	0.0	0.0	0.0
	Total All Funds			\$ 420.0	\$ 420.0	\$ 0.0	\$ 0.0	\$ 0.0	\$ 0.0	\$ 0.0

BR 1-431 ON SR 15, DEXTER'S CORNER ROAD, SOUTH OF TOWNSEND [Project No. 23-071-05]

PROJECT SCOPE/DESCRIPTION: The proposed work on Bridge 1-431 will consist of realigning and reconstructing the existing roadway approaches to meet current design standards. Included in this realignment will be the removal and replacement of the existing concrete structure with a new precast concrete box culvert and wingwalls. Riprap will also be placed to protect the stream and structure from the effects of scour.

PROJECT JUSTIFICATION: The existing bridge is a concrete box that was extended on both sides with corrugated steel pipes and concrete masonry. The concrete box is in poor condition due to several delaminations present in the structure. The existing concrete masonry is also in poor shape and should be replaced. The steel pipes have corrosion at the waterline that will continue to deteriorate. This bridge is currently ranked 401st out of 1,399 on the bridge deficiency list (via the bridge management program).



County:	New Castle
Municipality:	
Funding Program:	Road System – Bridges
Functional Category:	Preservation
Representative District:	8
Senatorial District:	14



BR 1-431 ON SR 15, DEXTER'S CORNER ROAD, SOUTH OF TOWNSEND (CONTINUED)

Bridge 1-431



BR 1-431 ON SR 15, DEXTER'S CORNER ROAD, SOUTH OF TOWNSEND (CONTINUED)**PROJECT FUNDING INFORMATION**

Project	Funding Type	Original Estimate	Current Estimate	Authorization	Committed as of 12/31/04	Expended as of 12/31/04	Committed Unexpended as of 12/31/04	Authorization Available
BR 1-431 on SR 15, Dexter's Corner Road, South of Townsend		\$ 673.0						
Prior Years	State			\$ 130.5	\$ 130.5	\$ 35.8	\$ 94.7	\$ 0.0
	Federal			\$ 470.0	\$ 470.0	\$ 35.6	\$ 434.4	\$ 0.0
	Other			\$ 0.0	\$ 0.0	\$ 0.0	\$ 0.0	\$ 0.0
FY 2005	State		\$ 1,185.5	\$ 175.4	\$ 82.9	\$ 0.0	\$ 82.9	\$ 92.5
	Federal			\$ 409.6	\$ 39.8	\$ 0.0	\$ 39.8	\$ 369.8
	Other			\$ 0.0	\$ 0.0	\$ 0.0	\$ 0.0	\$ 0.0
FY 2006 Request	State							
	Federal							
	Other							
FY 2007 Projected	State							
	Federal							
	Other							
FY 2008 Projected	State							
	Federal							
	Other							
FY 2009-2011 Projected	State							
	Federal							
	Other							
Total Projected	State			\$ 305.9	\$ 213.4			\$ 92.5
	Federal			\$ 879.6	\$ 509.8			\$ 369.8
	Other			\$ 0.0	\$ 0.0			\$ 0.0
Total All Funds		\$ 673.0	\$ 1,185.5	\$ 1,185.5	\$ 723.2	\$ 71.4	\$ 651.8	\$ 462.3

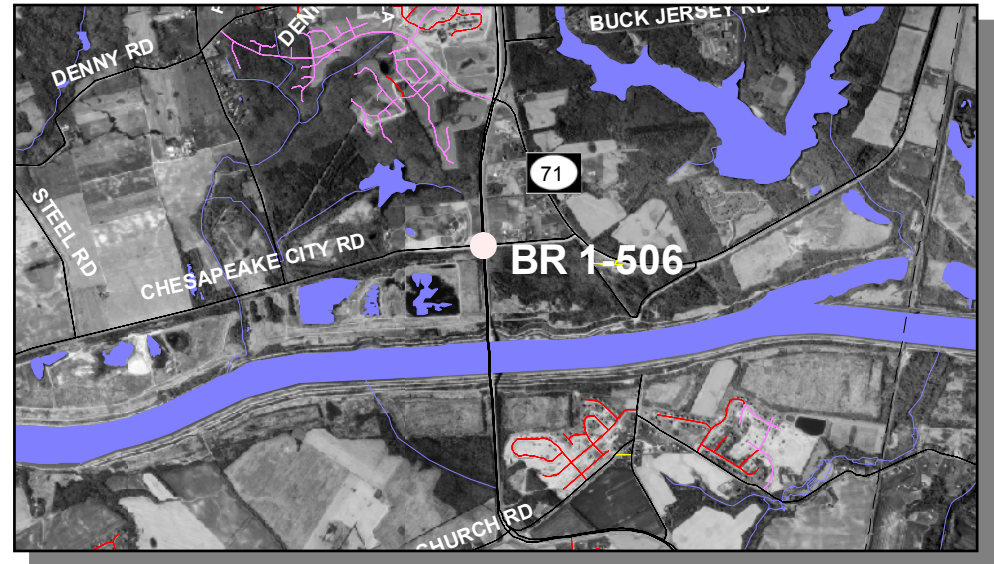
BR 1-431 ON SR 15, DEXTER'S CORNER ROAD, SOUTH OF TOWNSEND (CONTINUED)**PROJECT TIMELINE INFORMATION**

Project #	Description	Phase	Funding Schedule	Current Estimate	Prior Years	FY 2005	FY 2006	FY 2007	FY 2008	FY 2009 -2011
23-071-05	BR 1-431 on SR 15, Dexter's Corner Road, South of Townsend	PE	80% FHWA	\$ 75.0	\$ 75.0	\$ 0.0	\$ 0.0	\$ 0.0	\$ 0.0	\$ 0.0
		RW	100% ST	86.0	13.0	73.0	0.0	0.0	0.0	0.0
		C	80% FHWA	1,024.5	512.5	512.0	0.0	0.0	0.0	0.0
	Total All Funds			\$ 1,185.5	\$ 600.5	\$ 585.0	\$ 0.0	\$ 0.0	\$ 0.0	\$ 0.0

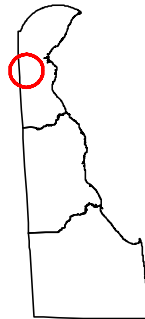
BR 1-506 ON N399, CHESAPEAKE CITY ROAD OVER SUMMIT BRIDGE ROAD [Project No. 22-074-05]

PROJECT SCOPE/DESCRIPTION: Bridge 1-506 on N399, Chesapeake City Road began construction in FY 2004. The improvements include removing the existing hot-mix on the bridge deck, replacing the hot-mix with high performance concrete, rehabilitating the substructure, painting the beams and other safety improvements and incidental work. This project was awarded in December 2003 and construction began in summer 2004. Paving and overlay of N399, Chesapeake City Road from the Maryland State Line to SR 71, Red Lion Road will also be constructed with the bridge.

PROJECT JUSTIFICATION: The bridge is in need of repair to maintain its structural capacity and is currently ranked 153rd out of 1,399 on the department's bridge deficiency list (via the bridge management program).



County:	New Castle
Municipality:	
Funding Program:	Road System – Bridges
Functional Category:	Preservation
Representative District:	9, 15
Senatorial District:	10, 12



BR 1-506 ON N399, CHESAPEAKE CITY ROAD OVER SUMMIT BRIDGE ROAD (CONTINUED)

Bridge 1-506 Over SR896



Bridge 1-506 Looking West



BR 1-506 ON N399, CHESAPEAKE CITY ROAD OVER SUMMIT BRIDGE ROAD (CONTINUED)**PROJECT FUNDING INFORMATION**

Project	Funding Type	Original Estimate	Current Estimate	Authorization	Committed as of 12/31/04	Expended as of 12/31/04	Committed Unexpended as of 12/31/04	Authorization Available
BR 1-506 on N399, Chesapeake City Road over Summit Bridge Road		\$ 1,465.5						
Prior Years	State			\$ 852.7	\$ 781.6	\$ 579.5	\$ 202.1	\$ 71.1
	Federal			\$ 612.8	\$ 237.5	\$ 174.7	\$ 62.8	\$ 375.3
	Other			\$ 0.0	\$ 0.0	\$ 0.0	\$ 0.0	\$ 0.0
FY 2005	State		\$ 1,465.5	\$ 0.0	\$ 0.0	\$ 0.0	\$ 0.0	\$ 71.1
	Federal			\$ 0.0	\$ 0.0	\$ 0.0	\$ 0.0	\$ 375.3
	Other			\$ 0.0	\$ 0.0	\$ 0.0	\$ 0.0	\$ 0.0
FY 2006 Request	State							
	Federal							
	Other							
FY 2007 Projected	State							
	Federal							
	Other							
FY 2008 Projected	State							
	Federal							
	Other							
FY 2009-2011 Projected	State							
	Federal							
	Other							
Total Projected	State			\$ 852.7	\$ 781.6			\$ 71.1
	Federal			\$ 612.8	\$ 237.5			\$ 375.3
	Other			\$ 0.0	\$ 0.0			\$ 0.0
Total All Funds		\$ 1,465.5	\$ 1,465.5	\$ 1,465.5	\$ 1,019.1	\$ 754.2	\$ 264.9	\$ 446.4

BR 1-506 ON N399, CHESAPEAKE CITY ROAD OVER SUMMIT BRIDGE ROAD (CONTINUED)**PROJECT TIMELINE INFORMATION**

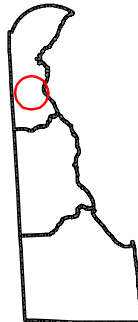
Project #	Description	Phase	Funding Schedule	Current Estimate	Prior Years	FY 2005	FY 2006	FY 2007	FY 2008	FY 2009 -2011
22-074-05	BR 1-506 on N399, Chesapeake City Road over Summit Bridge Road	PE	80% FHWA	\$ 75.0	\$ 75.0	\$ 0.0	\$ 0.0	\$ 0.0	\$ 0.0	\$ 0.0
		RW	100% ST	699.5	699.5	0.0	0.0	0.0	0.0	0.0
		C	80% FHWA	691.0	691.0	0.0	0.0	0.0	0.0	0.0
	Total All Funds			\$ 1,465.5	\$ 1,465.5	\$ 0.0	\$ 0.0	\$ 0.0	\$ 0.0	\$ 0.0

BR 1-510 ON US 13, NORTHBOUND, SOUTH OF ODESSA [Project No. 23-071-06]

PROJECT SCOPE/DESCRIPTION: The proposed work for Bridge 1-510 will consist of replacing the existing concrete box culvert with a precast concrete rigid frame on piles. Riprap will need to be placed in the stream to protect the new structure and the streambed from the effects of scour. The roadway approaches will be reconstructed and new steel beam guardrail will be placed.

PROJECT JUSTIFICATION: The existing bridge is a concrete box culvert in poor condition. The concrete box culvert has many cracks, and several joints and at least one soffit are failing. The bridge is currently ranked 131st out of 1,399 on the bridge deficiency list (via the bridge management program).

County:	New Castle
Municipality:	
Funding Program:	Road System – Bridges
Functional Category:	Preservation
Representative District:	8, 9
Senatorial District:	14



BR 1-510 ON US 13, NORTHBOUND, SOUTH OF ODESSA (CONTINUED)

Bridge 1-510



BR 1-510 ON US 13, NORTHBOUND, SOUTH OF ODESSA (CONTINUED)**PROJECT FUNDING INFORMATION**

Project	Funding Type	Original Estimate	Current Estimate	Authorization	Committed as of 12/31/04	Expended as of 12/31/04	Committed Unexpended as of 12/31/04	Authorization Available
BR 1-510 on US 13, Northbound South of Odessa		\$ 1,044.0						
Prior Years	State			\$ 464.0	\$ 209.9	\$ 30.4	\$ 179.5	\$ 254.1
	Federal			\$ 630.4	\$ 630.4	\$ 110.0	\$ 520.4	\$ 0.0
	Other			\$ 0.0	\$ 0.0	\$ 0.0	\$ 0.0	\$ 0.0
FY 2005	State		\$ 1,295.7	\$ 40.3	\$ 0.0	\$ 0.0	\$ 0.0	\$ 294.4
	Federal			\$ 161.0	\$ 161.0	\$ 0.0	\$ 161.0	\$ 0.0
	Other			\$ 0.0	\$ 0.0	\$ 0.0	\$ 0.0	\$ 0.0
FY 2006 Request	State							
	Federal							
	Other							
FY 2007 Projected	State							
	Federal							
	Other							
FY 2008 Projected	State							
	Federal							
	Other							
FY 2009-2011 Projected	State							
	Federal							
	Other							
Total Projected	State			\$ 504.3	\$ 209.9			\$ 294.5
	Federal			\$ 791.4	\$ 791.4			\$ 0.0
	Other			\$ 0.0	\$ 0.0			\$ 0.0
Total All Funds		\$ 1,044.0	\$ 1,295.7	\$ 1,295.7	\$ 1,001.3	\$ 140.5	\$ 860.8	\$ 294.5

BR 1-510 ON US 13, NORTHBOUND, SOUTH OF ODESSA (CONTINUED)**PROJECT TIMELINE INFORMATION**

Project #	Description	Phase	Funding Schedule	Current Estimate	Prior Years	FY 2005	FY 2006	FY 2007	FY 2008	FY 2009 -2011
23-071-06	BR 1-510 on US 13, Northbound South of Odessa	PE	80% FHWA	\$ 124.0	\$ 124.0	\$ 0.0	\$ 0.0	\$ 0.0	\$ 0.0	\$ 0.0
		RW	100% ST	306.4	306.4	0.0	0.0	0.0	0.0	0.0
		C	80% FHWA	865.3	664.0	201.3	0.0	0.0	0.0	0.0
	Total All Funds			\$ 1,295.7	\$ 1,094.4	\$ 201.3	\$ 0.0	\$ 0.0	\$ 0.0	\$ 0.0

BR 1-600 ON SR141, FERRIS ROAD, OVER SR 2, KIRKWOOD HIGHWAY

PROJECT SCOPE/DESCRIPTION: The proposed work for Bridge 1-600 consists of rehabilitating the existing steel girder structure. The existing expansion joints will be replaced. Areas of spalling in the concrete substructure will be repaired. The existing concrete deck will be milled and replaced with a high performance concrete overlay.

PROJECT JUSTIFICATION: The existing structure is a two-span continuous steel girder bridge with a composite concrete deck. The bridge is in need of repair to maintain its integrity and to extend the life of the bridge. The heavy spalling on the substructure needs to be repaired. The expansion bearings and joints need to be replaced. The bridge is currently ranked 162nd out of 1,399 on the bridge deficiency list (via the bridge management program).



County:	New Castle
Municipality:	
Funding Program:	Road System – Bridges
Functional Category:	Preservation
Representative District:	12, 13
Senatorial District:	7



BR 1-600 ON SR141, FERRIS ROAD, OVER SR 2, KIRKWOOD HIGHWAY (CONTINUED)

Bridge 1-600



BR 1-600 ON SR141, FERRIS ROAD, OVER SR 2, KIRKWOOD HIGHWAY (CONTINUED)**PROJECT FUNDING INFORMATION**

Project	Funding Type	Original Estimate	Current Estimate	Authorization	Committed as of 12/31/04	Expended as of 12/31/04	Committed Unexpended as of 12/31/04	Authorization Available
BR 1-600 on SR141, Ferris Road over SR 2, Kirkwood Highway		\$ 1,750.0						
Prior Years	State			\$ 82.0	\$ 82.0	\$ 0.0	\$ 82.0	\$ 0.0
	Federal			\$ 0.0	\$ 0.0	\$ 0.0	\$ 0.0	\$ 0.0
	Other			\$ 0.0	\$ 0.0	\$ 0.0	\$ 0.0	\$ 0.0
FY 2005	State		\$ 1,750.0	\$ 333.6	\$ 251.6	\$ 0.0	\$ 251.6	\$ 82.0
	Federal			\$ 1,334.4	\$ 1,334.4	\$ 0.0	\$ 1,334.4	\$ 0.0
	Other			\$ 0.0	\$ 0.0	\$ 0.0	\$ 0.0	\$ 0.0
FY 2006 Request	State							
	Federal							
	Other							
FY 2007 Projected	State							
	Federal							
	Other							
FY 2008 Projected	State							
	Federal							
	Other							
FY 2009-2011 Projected	State							
	Federal							
	Other							
Total Projected	State			\$ 415.6	\$ 333.6			\$ 82.0
	Federal			\$ 1,334.4	\$ 1,334.4			\$ 0.0
	Other			\$ 0.0	\$ 0.0			\$ 0.0
Total All Funds		\$ 1,750.0	\$ 1,750.0	\$ 1,750.0	\$ 1,668.0	\$ 0.0	\$ 1,668.0	\$ 82.0

BR 1-600 ON SR141, FERRIS ROAD, OVER SR 2, KIRKWOOD HIGHWAY (CONTINUED)**PROJECT TIMELINE INFORMATION**

Project #	Description	Phase	Funding Schedule	Current Estimate	Prior Years	FY 2005	FY 2006	FY 2007	FY 2008	FY 2009 -2011
	BR 1-600 on SR141, Ferris Road, over SR 2, Kirkwood Highway	PE	100% ST	\$ 82.0	\$ 82.0	\$ 0.0	\$ 0.0	\$ 0.0	\$ 0.0	\$ 0.0
		RW	100% ST	0.0	0.0	0.0	0.0	0.0	0.0	0.0
		C	80% FHWA	1,668.0	0.0	1,668.0	0.0	0.0	0.0	0.0
	Total All Funds			\$ 1,750.0	\$ 82.0	\$ 1,668.0	\$ 0.0	\$ 0.0	\$ 0.0	\$ 0.0