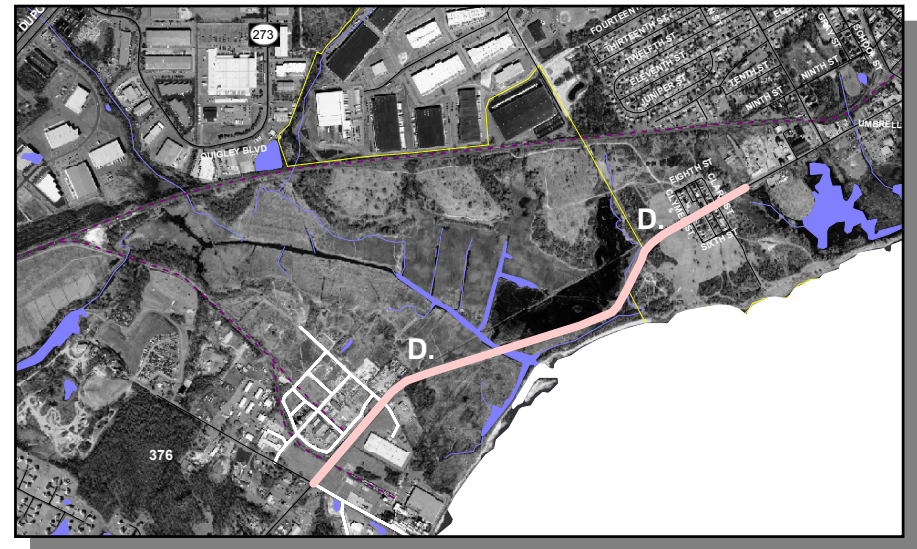
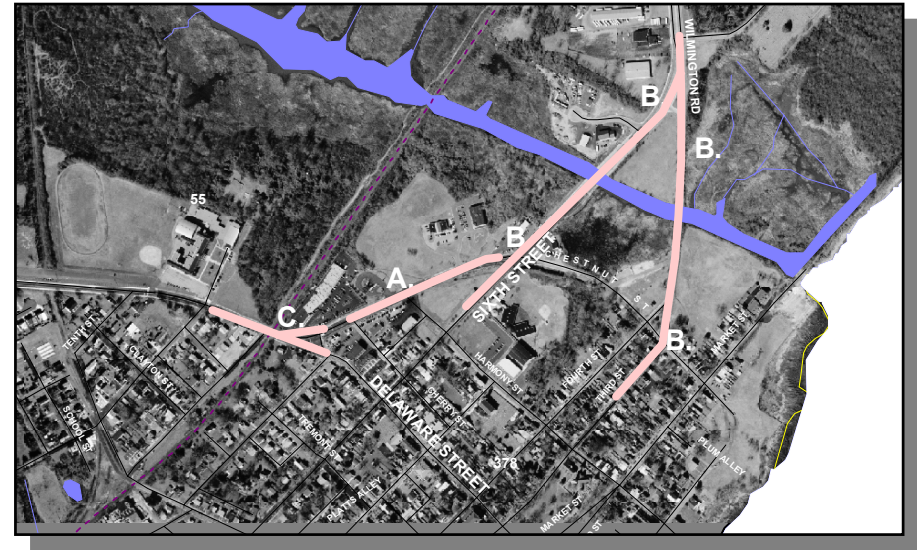


NEW CASTLE CITY IMPROVEMENTS [Project No. 24-041-02]**PROJECT SCOPE/DESCRIPTION:**

- A. **SR 9, Capacity Improvements** – Project development will begin to determine the best path forward to control and increase capacity on SR 9, between SR273 and Wilmington Road / Sixth Street/Third Street intersections.
- B. **SR 9, Wilmington Road and Third Street and Sixth Street [Project No. 24-041-02]**– Plans have begun to reconfigure a continuous alignment on SR 9. Currently the alignment of the intersection directs through traffic onto residential historical streets. This project will provide pedestrian crosswalks at both intersections and may signalize SR 9 and Sixth Street, if necessary.
- C. **SR 9, Wilmington Road and Delaware Street, Intersection Improvements** - This project is to realign the SR 9, Wilmington Road and Delaware Street intersection. The realignment of the intersection would orient through traffic to continue on SR 9, Washington Street and bypass to north of the City.
- D. **SR 9, River Road Area Improvements** – Project development work will commence in FY 2005 to determine the best path forward to relieve the area flooding. Although this area has frequently flooded, recent growth in residential development has identified this as a major problem.



NEW CASTLE CITY IMPROVEMENTS (CONTINUED)

PROJECT JUSTIFICATION: These intersection improvements were recommended from the DelDOT sponsored City of New Castle Transportation Plan, adopted by WILMAPCO in January 2000. The current geometry of the intersection encourages traffic to continue into the residential section of the City instead of using SR 9. The improvements will address the problem of cut through traffic on residential streets by encouraging traffic to remain on SR 9. A traffic signal and crosswalks will improve connections between historic New Castle and surrounding commercial areas, schools and housing.

The existing capacity of SR 9 narrows from four lanes to two-lanes as it passes through the City of New Castle. Providing a continuous four-lane section around the historic center removes the incentive for traffic to use Third Street, Sixth Street and Ninth Street as a cut-through.

SR 9 Capacity Improvements

County:

Municipality:

Funding Program:

Functional Category:

Representative District:

Senatorial District:

New Castle

New Castle

Road System – Arterials

Management

17

12, 13



NEW CASTLE CITY IMPROVEMENTS (CONTINUED)

SR 9, Wilmington Avenue and Delaware Street



NEW CASTLE CITY IMPROVEMENTS (CONTINUED)**PROJECT FUNDING INFORMATION**

Project	Funding Type	Original Estimate	Current Estimate	Authorization	Committed as of 12/31/04	Expended as of 12/31/04	Committed Unexpended as of 12/31/04	Authorization Available
New Castle City Improvements		\$ 3,080.0						
Prior Years	State			\$ 280.0	\$ 280.0	\$ 84.9	\$ 195.1	\$ 0.0
	Federal			\$ 0.0	\$ 0.0	\$ 0.0	\$ 0.0	\$ 0.0
	Other			\$ 0.0	\$ 0.0	\$ 0.0	\$ 0.0	\$ 0.0
FY 2005	State		\$ 6,030.0	\$ 930.0	\$ 709.0	\$ 0.0	\$ 709.0	\$ 221.0
	Federal			\$ 0.0	\$ 0.0	\$ 0.0	\$ 0.0	\$ 0.0
	Other			\$ 0.0	\$ 0.0	\$ 0.0	\$ 0.0	\$ 0.0
FY 2006 Request	State			\$ 770.0				\$ 991.0
	Federal			\$ 0.0				\$ 0.0
	Other			\$ 0.0				\$ 0.0
FY 2007 Projected	State			\$ 970.0				\$ 1,961.0
	Federal			\$ 2,080.0				\$ 2,080.0
	Other			\$ 0.0				\$ 0.0
FY 2008 Projected	State			\$ 200.0				\$ 2,161.0
	Federal			\$ 800.0				\$ 2,880.0
	Other			\$ 0.0				\$ 0.0
FY 2009-2011 Projected	State			\$ 0.0				\$ 2,161.0
	Federal			\$ 0.0				\$ 2,880.0
	Other			\$ 0.0				\$ 0.0
Total Projected	State			\$ 3,150.0	\$ 989.0			\$ 2,161.0
	Federal			\$ 2,880.0	\$ 0.0			\$ 2,880.0
	Other			\$ 0.0	\$ 0.0			\$ 0.0
Total All Funds		\$ 3,080.0	\$ 6,030.0	\$ 6,030.0	\$ 989.0	\$ 84.9	\$ 904.1	\$ 5,041.0

NEW CASTLE CITY IMPROVEMENTS (CONTINUED)**PROJECT TIMELINE INFORMATION**

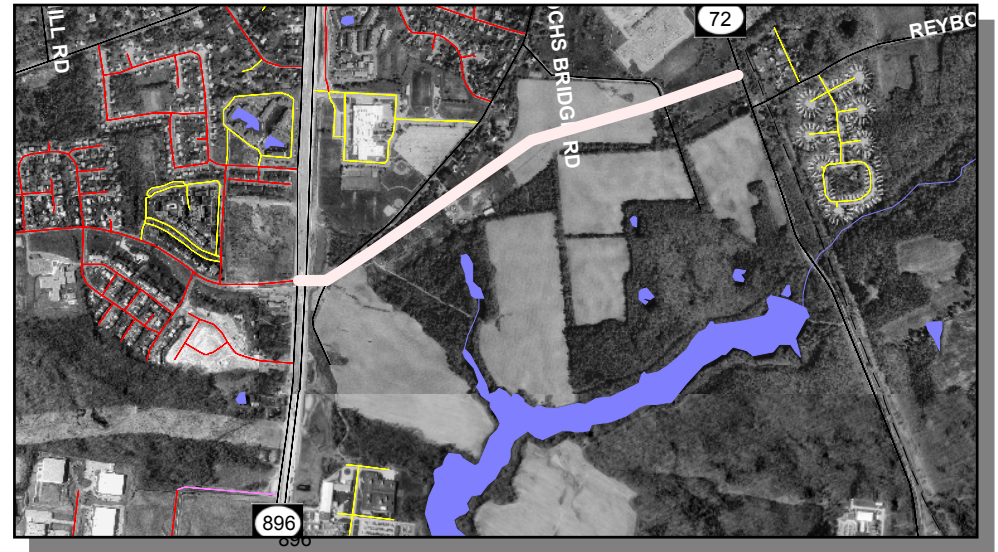
Project #	Description	Phase	Funding Schedule	Current Estimate	Prior Years	FY 2005	FY 2006	FY 2007	FY 2008	FY 2009 -2011
24-041-02	New Castle City Improvements									
	A. SR 9, Capacity Improvements	PD	100% ST	\$ 250.0	\$ 0.0	\$ 250.0	\$ 0.0	\$ 0.0	\$ 0.0	\$ 0.0
		C	80% FHWA	0.0	0.0	0.0	0.0	0.0	0.0	0.0
24-041-02	B. SR 9, Wilmington Road and Third Street	PD	100% ST	280.0	0.0	110.0	170.0	0.0	0.0	0.0
		PE	100% ST	100.0	100.0	0.0	0.0	0.0	0.0	0.0
		C	80% FHWA	800.0	0.0	0.0	0.0	800.0	0.0	0.0
24-041-02	B. SR 9, Wilmington Road and Sixth Street	PE	100% ST	250.0	180.0	70.0	0.0	0.0	0.0	0.0
		RW	100% ST	200.0	0.0	0.0	200.0	0.0	0.0	0.0
		C	80% FHWA	1,800.0	0.0	0.0	0.0	1,800.0	0.0	0.0
	C. SR 9, Wilmington Road and Delaware Street, Intersection Improvements	PD	100% ST	150.0	0.0	0.0	150.0	0.0	0.0	0.0
		PE	100% ST	250.0	0.0	0.0	0.0	250.0	0.0	0.0
		RW	100% ST	200.0	0.0	0.0	0.0	200.0	0.0	0.0
		C	80% FHWA	1,000.0	0.0	0.0	0.0	0.0	1,000.0	0.0
	D. SR 9, River Road Area Improvements	PD	100% ST	750.0	0.0	500.0	250.0	0.0	0.0	0.0
		PE	100% ST	0.0	0.0	0.0	0.0	0.0	0.0	0.0
		RW	100% ST	0.0	0.0	0.0	0.0	0.0	0.0	0.0
		C	80% FHWA	0.0	0.0	0.0	0.0	0.0	0.0	0.0
	Total All Funds			\$ 6,030.0	\$ 280.0	\$ 930.0	\$ 770.0	\$ 3,050.0	\$ 1,000.0	\$ 0.0

NEWTOWN ROAD, SR896, SOUTH COLLEGE AVENUE TO SR 72, SOUTH CHAPEL STREET [ID No. 04-00185]

PROJECT SCOPE/DESCRIPTION: Project development will determine the need, scope and cost estimate of a proposed new roadway between SR896, South College Avenue and SR 72, South Chapel Street.

PROJECT JUSTIFICATION: Increased development in the surrounding area may necessitate a need for a new alternate route between SR896, South College Avenue and SR 72, South Chapel Street to relieve congestion on Old Baltimore Pike.

County:	New Castle
Municipality:	
Funding Program:	Road System – Arterials
Functional Category:	Expansion
Representative District:	24, 27
Senatorial District:	10



NEWTOWN ROAD, SR896, SOUTH COLLEGE AVENUE TO SR 72, SOUTH CHAPEL STREET (CONTINUED)

SR 896, South College Avenue Proposed Area for Newtown Road



SR 896, South College Avenue Looking West



NEWTOWN ROAD, SR896, SOUTH COLLEGE AVENUE TO SR 72, SOUTH CHAPEL STREET (CONTINUED)**PROJECT FUNDING INFORMATION**

Project	Funding Type	Original Estimate	Current Estimate	Authorization	Committed as of 12/31/04	Expended as of 12/31/04	Committed Unexpended as of 12/31/04	Authorization Available
Newtown Road, SR896, South College Avenue to SR 72, South Chapel Street		\$ 250.0						
Prior Years	State			\$ 0.0	\$ 0.0	\$ 0.0	\$ 0.0	\$ 0.0
	Federal			\$ 0.0	\$ 0.0	\$ 0.0	\$ 0.0	\$ 0.0
	Other			\$ 0.0	\$ 0.0	\$ 0.0	\$ 0.0	\$ 0.0
FY 2005	State		\$ 250.0	\$ 0.0	\$ 0.0	\$ 0.0	\$ 0.0	\$ 0.0
	Federal			\$ 0.0	\$ 0.0	\$ 0.0	\$ 0.0	\$ 0.0
	Other			\$ 0.0	\$ 0.0	\$ 0.0	\$ 0.0	\$ 0.0
FY 2006 Request	State			\$ 0.0				\$ 0.0
	Federal			\$ 0.0				\$ 0.0
	Other			\$ 0.0				\$ 0.0
FY 2007 Projected	State			\$ 250.0				\$ 250.0
	Federal			\$ 0.0				\$ 0.0
	Other			\$ 0.0				\$ 0.0
FY 2008 Projected	State			\$ 0.0				\$ 250.0
	Federal			\$ 0.0				\$ 0.0
	Other			\$ 0.0				\$ 0.0
FY 2009-2011 Projected	State			\$ 0.0				\$ 250.0
	Federal			\$ 0.0				\$ 0.0
	Other			\$ 0.0				\$ 0.0
Total Projected	State			\$ 250.0	\$ 0.0			\$ 250.0
	Federal			\$ 0.0	\$ 0.0			\$ 0.0
	Other			\$ 0.0	\$ 0.0			\$ 0.0
Total All Funds		\$ 250.0	\$ 250.0	\$ 250.0	\$ 0.0	\$ 0.0	\$ 0.0	\$ 250.0

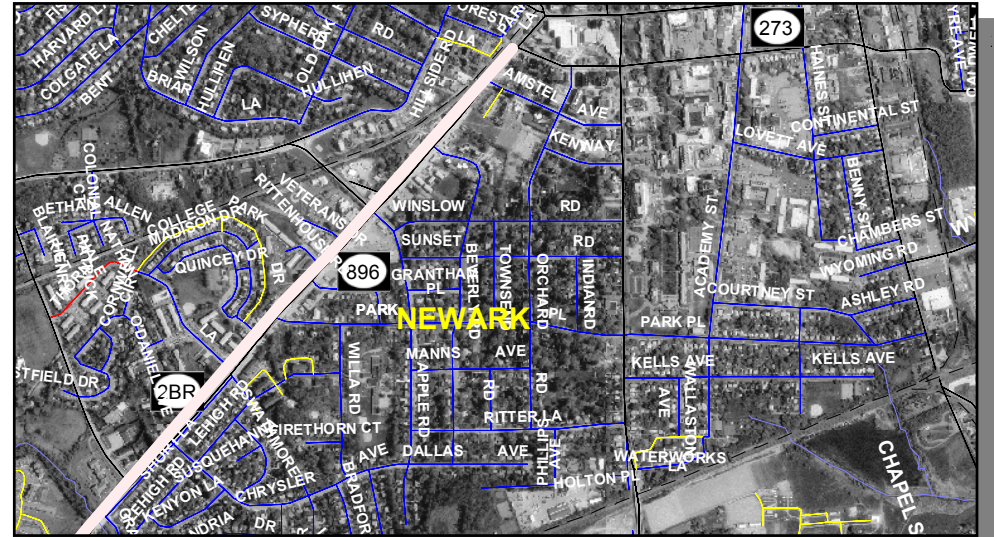
NEWTOWN ROAD, SR896, SOUTH COLLEGE AVENUE TO SR 72, SOUTH CHAPEL STREET (CONTINUED)**PROJECT TIMELINE INFORMATION**

Project #	Description	Phase	Funding Schedule	Current Estimate	Prior Years	FY 2005	FY 2006	FY 2007	FY 2008	FY 2009 -2011
	Newtown Road, SR896, South College Avenue to SR 72, South Chapel Street	PD	100% ST	\$ 250.0	\$ 0.0	\$ 0.0	\$ 0.0	\$ 250.0	\$ 0.0	\$ 0.0
	Total All Funds			\$ 250.0	\$ 0.0	\$ 0.0	\$ 0.0	\$ 250.0	\$ 0.0	\$ 0.0

SR 2, ELKTON ROAD, MARYLAND STATE LINE TO SR273, DELAWARE AVENUE, NEWARK [Project No. 24-044-01]

PROJECT SCOPE/DESCRIPTION: This project will include roadway reconstruction and intersection improvements within the city limits of Newark; safety, pedestrian and bicycle improvements from West Park Place to Delaware Avenue; and pedestrian and bicycle improvements at SR 4, Christina Parkway/SR 2, Elkton Road intersection. The project development phase will define the actual scope of work needed and develop an estimate.

PROJECT JUSTIFICATION: The roadway surface along this area is crumbling and needs a total reconstruction. The area from Amstel Avenue north to SR273, Delaware Avenue in Newark has been identified as a Highway Safety Improvement Program (HSIP) site.



County: New Castle
Municipality: Newark
Funding Program: Road System – Arterials
Functional Category: Management
Representative District: 23, 25
Senatorial District: 6



SR 2, ELKTON ROAD, MARYLAND STATE LINE TO SR273, DELAWARE AVENUE, NEWARK (CONTINUED)

SR 2, Elkton Road in Newark



SR 2, Elkton Road to Maryland State Line



SR 2, ELKTON ROAD, MARYLAND STATE LINE TO SR273, DELAWARE AVENUE, NEWARK (CONTINUED)**PROJECT FUNDING INFORMATION**

Project	Funding Type	Original Estimate	Current Estimate	Authorization	Committed as of 12/31/04	Expended as of 12/31/04	Committed Unexpended as of 12/31/04	Authorization Available
SR 2, Elkton Road, Maryland State Line to SR273, Delaware Avenue, Newark		\$ 550.0						
Prior Years	State			\$ 550.0	\$ 450.0	\$ 82.9	\$ 367.1	\$ 100.0
	Federal			\$ 0.0	\$ 0.0	\$ 0.0	\$ 0.0	\$ 0.0
	Other			\$ 0.0	\$ 0.0	\$ 0.0	\$ 0.0	\$ 0.0
FY 2005	State		\$ 1,550.0	\$ 0.0	\$ 0.0	\$ 0.0	\$ 0.0	\$ 100.0
	Federal			\$ 0.0	\$ 0.0	\$ 0.0	\$ 0.0	\$ 0.0
	Other			\$ 0.0	\$ 0.0	\$ 0.0	\$ 0.0	\$ 0.0
FY 2006 Request	State			\$ 1,000.0				\$ 1,100.0
	Federal			\$ 0.0				\$ 0.0
	Other			\$ 0.0				\$ 0.0
FY 2007 Projected	State			\$ 0.0				\$ 1,100.0
	Federal			\$ 0.0				\$ 0.0
	Other			\$ 0.0				\$ 0.0
FY 2008 Projected	State			\$ 0.0				\$ 1,100.0
	Federal			\$ 0.0				\$ 0.0
	Other			\$ 0.0				\$ 0.0
FY 2009-2011 Projected	State			\$ 0.0				\$ 1,100.0
	Federal			\$ 0.0				\$ 0.0
	Other			\$ 0.0				\$ 0.0
Total Projected	State			\$ 1,550.0	\$ 450.0			\$ 1,100.0
	Federal			\$ 0.0	\$ 0.0			\$ 0.0
	Other			\$ 0.0	\$ 0.0			\$ 0.0
Total All Funds		\$ 550.0	\$ 1,550.0	\$ 1,550.0	\$ 450.0	\$ 82.9	\$ 367.1	\$ 1,100.0

SR 2, ELKTON ROAD, MARYLAND STATE LINE TO SR273, DELAWARE AVENUE, NEWARK (CONTINUED)**PROJECT TIMELINE INFORMATION**

Project #	Description	Phase	Funding Schedule	Current Estimate	Prior Years	FY 2005	FY 2006	FY 2007	FY 2008	FY 2009 -2011
24-044-01	SR 2, Elkton Road, Maryland State Line to SR273, Delaware Avenue, Newark	PD	100% ST	\$ 550.0	\$ 550.0	\$ 0.0	\$ 0.0	\$ 0.0	\$ 0.0	\$ 0.0
		PE	100% ST	1,000.0	0.0	0.0	1,000.0	0.0	0.0	0.0
		RW	100% ST	0.0	0.0	0.0	0.0	0.0	0.0	0.0
		C	80% FHWA	0.0	0.0	0.0	0.0	0.0	0.0	0.0
	Total All Funds			\$ 1,550.0	\$ 550.0	\$ 0.0	\$ 1,000.0	\$ 0.0	\$ 0.0	\$ 0.0

SR 2, KIRKWOOD HIGHWAY AND N352, RED MILL ROAD INTERSECTION IMPROVEMENTS, NEWARK [ID No. 04-00592]

PROJECT SCOPE/DESCRIPTION: This project will commence with the Project Development phase. The improvements may include the addition of a through lane on each leg of the intersection and additional turning capacity. Pedestrian and bicycle movements will also be addressed.

PROJECT JUSTIFICATION: This intersection is rated Level Of Service (LOS) E (represents operating conditions at/or near capacity level) during the morning and evening traffic periods. The improvements address operational, capacity, pedestrian, bicycles and safety concerns.

County: New Castle
Municipality:
Funding Program: Road System – Arterials
Functional Category: Management
Representative District: 21, 24
Senatorial District: 9



SR 2, Kirkwood Highway and N352, Red Mill Road



SR 2, KIRKWOOD HIGHWAY AND N352, RED MILL ROAD INTERSECTION IMPROVEMENTS, NEWARK (CONTINUED)**PROJECT FUNDING INFORMATION**

Project	Funding Type	Original Estimate	Current Estimate	Authorization	Committed as of 12/31/04	Expended as of 12/31/04	Committed Unexpended as of 12/31/04	Authorization Available
SR 2, Kirkwood Highway and N352, Red Mill Road Intersection Improvements, Newark		\$ 250.0						
Prior Years	State			\$ 0.0	\$ 0.0	\$ 0.0	\$ 0.0	\$ 0.0
	Federal			\$ 0.0	\$ 0.0	\$ 0.0	\$ 0.0	\$ 0.0
	Other			\$ 0.0	\$ 0.0	\$ 0.0	\$ 0.0	\$ 0.0
FY 2005	State		\$ 250.0	\$ 0.0	\$ 0.0	\$ 0.0	\$ 0.0	\$ 0.0
	Federal			\$ 0.0	\$ 0.0	\$ 0.0	\$ 0.0	\$ 0.0
	Other			\$ 0.0	\$ 0.0	\$ 0.0	\$ 0.0	\$ 0.0
FY 2006 Request	State			\$ 0.0				\$ 0.0
	Federal			\$ 0.0				\$ 0.0
	Other			\$ 0.0				\$ 0.0
FY 2007 Projected	State			\$ 250.0				\$ 250.0
	Federal			\$ 0.0				\$ 0.0
	Other			\$ 0.0				\$ 0.0
FY 2008 Projected	State			\$ 0.0				\$ 250.0
	Federal			\$ 0.0				\$ 0.0
	Other			\$ 0.0				\$ 0.0
FY 2009-2011 Projected	State			\$ 0.0				\$ 250.0
	Federal			\$ 0.0				\$ 0.0
	Other			\$ 0.0				\$ 0.0
Total Projected	State			\$ 250.0	\$ 0.0			\$ 250.0
	Federal			\$ 0.0	\$ 0.0			\$ 0.0
	Other			\$ 0.0	\$ 0.0			\$ 0.0
Total All Funds		\$ 250.0	\$ 250.0	\$ 250.0	\$ 0.0	\$ 0.0	\$ 0.0	\$ 250.0

SR 2, KIRKWOOD HIGHWAY AND N352, RED MILL ROAD INTERSECTION IMPROVEMENTS, NEWARK (CONTINUED)**PROJECT TIMELINE INFORMATION**

Project #	Description	Phase	Funding Schedule	Current Estimate	Prior Years	FY 2005	FY 2006	FY 2007	FY 2008	FY 2009 -2011
	SR 2, Kirkwood Highway and N352, Red Mill Road Intersection Improvements, Newark	PD	100% ST	\$ 250.0	\$ 0.0	\$ 0.0	\$ 0.0	\$ 250.0	\$ 0.0	\$ 0.0
		PE	100% ST	0.0	0.0	0.0	0.0	0.0	0.0	0.0
		RW	100% ST	0.0	0.0	0.0	0.0	0.0	0.0	0.0
		C	80% FHWA	0.0	0.0	0.0	0.0	0.0	0.0	0.0
	Total All Funds			\$ 250.0	\$ 0.0	\$ 0.0	\$ 0.0	\$ 250.0	\$ 0.0	\$ 0.0

SR 2, KIRKWOOD HIGHWAY, FROM SR141, CENTRE ROAD TO SR100, DUPONT ROAD, ELSMERE

PROJECT SCOPE/DESCRIPTION: This project coordinates sidewalk and median improvements with the planned construction project on SR 2, Kirkwood Highway, from SR141, Centre Road to SR100, Dupont Road.

PROJECT JUSTIFICATION: This project will promote multi-modal use and improve safety in the area.

County:	New Castle
Municipality:	Elsmere
Funding Program:	Road System - Arterials
Functional Category:	Management
Representative District:	12, 13
Senatorial District:	7



SR 2, KIRKWOOD HIGHWAY, FROM SR141, CENTRE ROAD TO SR100, DUPONT ROAD, ELSMERE (CONTINUED)**PROJECT FUNDING INFORMATION**

Project	Funding Type	Original Estimate	Current Estimate	Authorization	Committed as of 12/31/04	Expended as of 12/31/04	Committed Unexpended as of 12/31/04	Authorization Available
SR 2, Kirkwood Highway, from SR141, Centre Road to SR100, DuPont Road, Elsmere		\$ 900.0						
Prior Years	State			\$ 900.0	\$ 0.0	\$ 0.0	\$ 0.0	\$ 900.0
	Federal			\$ 0.0	\$ 0.0	\$ 0.0	\$ 0.0	\$ 0.0
	Other			\$ 0.0	\$ 0.0	\$ 0.0	\$ 0.0	\$ 0.0
FY 2005	State		\$ 900.0	\$ 0.0	\$ 0.0	\$ 0.0	\$ 0.0	\$ 900.0
	Federal			\$ 0.0	\$ 0.0	\$ 0.0	\$ 0.0	\$ 0.0
	Other			\$ 0.0	\$ 0.0	\$ 0.0	\$ 0.0	\$ 0.0
FY 2006 Request	State							
	Federal							
	Other							
FY 2007 Projected	State							
	Federal							
	Other							
FY 2008 Projected	State							
	Federal							
	Other							
FY 2009-2011 Projected	State							
	Federal							
	Other							
Total Projected	State			\$ 900.0	\$ 0.0			\$ 900.0
	Federal			\$ 0.0	\$ 0.0			\$ 0.0
	Other			\$ 0.0	\$ 0.0			\$ 0.0
Total All Funds		\$ 900.0	\$ 900.0	\$ 900.0	\$ 0.0	\$ 0.0	\$ 0.0	\$ 900.0

SR 2, KIRKWOOD HIGHWAY, FROM SR141, CENTRE ROAD TO SR100, DUPONT ROAD, ELSMERE (CONTINUED)**PROJECT TIMELINE INFORMATION**

Project #	Description	Phase	Funding Schedule	Current Estimate	Prior Years	FY 2005	FY 2006	FY 2007	FY 2008	FY 2009 -2011
	SR 2, Kirkwood Highway, from SR141, Centre Road to SR100, DuPont Road, Elsmere	C	100% ST	\$ 900.0	\$ 900.0	\$ 0.0	\$ 0.0	\$ 0.0	\$ 0.0	\$ 0.0
	Total All Funds			\$ 900.0	\$ 900.0	\$ 0.0	\$ 0.0	\$ 0.0	\$ 0.0	\$ 0.0

SR 2, SOUTH UNION STREET FROM RAILROAD BRIDGE TO SYCAMORE STREET, WILMINGTON [Project No. 24-011-02]

PROJECT SCOPE/DESCRIPTION: The project will include the removal and replacement of concrete roadway curbing, sidewalks and drainage improvements.

PROJECT JUSTIFICATION: This project will promote multi-modal use and improve safety in the area. This project was delayed during the recently completed Kirkwood Highway project. Project development will begin in FY 2004.

County:	New Castle
Municipality:	Wilmington
Funding Program:	Road System – Arterials
Functional Category:	Management
Representative District:	2, 3, 13
Senatorial District:	3, 7



South Union Street



SR 2, SOUTH UNION STREET FROM RAILROAD BRIDGE TO SYCAMORE STREET, WILMINGTON (CONTINUED)**PROJECT FUNDING INFORMATION**

Project	Funding Type	Original Estimate	Current Estimate	Authorization	Committed as of 12/31/04	Expended as of 12/31/04	Committed Unexpended as of 12/31/04	Authorization Available
SR 2, South Union Street from Railroad Bridge to Sycamore Street, Wilmington		\$ 4,700.0						
Prior Years	State			\$ 500.0	\$ 500.0	\$ 0.0	\$ 500.0	\$ 0.0
	Federal			\$ 0.0	\$ 0.0	\$ 0.0	\$ 0.0	\$ 0.0
	Other			\$ 0.0	\$ 0.0	\$ 0.0	\$ 0.0	\$ 0.0
FY 2005	State		\$ 4,700.0	\$ 0.0	\$ 0.0	\$ 0.0	\$ 0.0	\$ 0.0
	Federal			\$ 0.0	\$ 0.0	\$ 0.0	\$ 0.0	\$ 0.0
	Other			\$ 0.0	\$ 0.0	\$ 0.0	\$ 0.0	\$ 0.0
FY 2006 Request	State			\$ 700.0				\$ 700.0
	Federal			\$ 0.0				\$ 0.0
	Other			\$ 0.0				\$ 0.0
FY 2007 Projected	State			\$ 700.0				\$ 1,400.0
	Federal			\$ 2,800.0				\$ 2,800.0
	Other			\$ 0.0				\$ 0.0
FY 2008 Projected	State							
	Federal							
	Other							
FY 2009-2011 Projected	State							
	Federal							
	Other							
Total Projected	State			\$ 1,900.0	\$ 500.0			\$ 1,400.0
	Federal			\$ 2,800.0	\$ 0.0			\$ 2,800.0
	Other			\$ 0.0	\$ 0.0			\$ 0.0
Total All Funds		\$ 4,700.0	\$ 4,700.0	\$ 4,700.0	\$ 500.0	\$ 0.0	\$ 500.0	\$ 4,200.0

SR 2, SOUTH UNION STREET FROM RAILROAD BRIDGE TO SYCAMORE STREET, WILMINGTON (CONTINUED)**PROJECT TIMELINE INFORMATION**

Project #	Description	Phase	Funding Schedule	Current Estimate	Prior Years	FY 2005	FY 2006	FY 2007	FY 2008	FY 2009 -2011
24-011-02	SR 2, South Union Street from Railroad Bridge to Sycamore Street, Wilmington	PE	100% ST	\$ 500.0	\$ 500.0	\$ 0.0	\$ 0.0	\$ 0.0	\$ 0.0	\$ 0.0
		RW	100% ST	700.0	0.0	0.0	700.0	0.0	0.0	0.0
		C	80% FHWA	3,500.0	0.0	0.0	0.0	3,500.0	0.0	0.0
	Total All Funds			\$ 4,700.0	\$ 500.0	\$ 0.0	\$ 700.0	\$ 3,500.0	\$ 0.0	\$ 0.0