

# ***ROAD SYSTEM***

## ***ARTERIALS***

***BLUE BALL PROPERTIES, SR141 AND US202 AREA IMPROVEMENTS*****PROJECT SCOPE/DESCRIPTION:**

On April 29, 1999 the State of Delaware announced a signature proposal that would bring the world's third largest pharmaceutical company's U.S. headquarters to the Brandywine Hundred area. Delaware's proposal to AstraZeneca was accepted, launching a first-of-its kind link between business site selection, land preservation, recreational opportunity, transportation improvements, and historic restoration. AstraZeneca and the State of Delaware joined with local officials and communities to develop a master plan for this area known as the Blue Ball Properties Project.

**The Blue Ball Properties Project**

The project consists of approximately 232 acres of land north of Wilmington in an area known as the Brandywine Hundred. Bisected by US202 and bounded on the south by I-95, this Master Plan offers over 152 acres of needed community improvements and economic development. Woodland areas and new recreational parks will all be accessible via the Northern Delaware Greenway. Transportation and infrastructure improvements will separate local and regional traffic, allowing for safe and efficient travel in the area. The much needed repair and enhancements of the degraded natural environment will bring new life to deteriorated streams and wetland areas. Historic restorations and rehabilitations to existing structures will allow for adaptive reuse. This Master Plan combines recreational, transportation, environmental, and historic improvements with substantial economic development, offered by AstraZeneca, to create a true gateway to the Brandywine Hundred Community. A more detailed individual project description, with maps, can be found on the internet at [www.blueball.net](http://www.blueball.net).

**Recreation**

Recreation elements and park trails will be implemented throughout the project in both the West and East Parks. Construction of new park trails in the gateway will link Bellevue State Park, Bringham Woods, Rockwood Museum with Brandywine Park and the City of Wilmington. East Park open play areas and multi-use playing fields will be constructed to help address the community's recreation needs.



***BLUE BALL PROPERTIES, SR141 AND US202 AREA IMPROVEMENTS (CONTINUED)*****Transportation**

Transportation improvements will be implemented throughout the project, beginning with infrastructure and transit services. Traffic signal communication fiber, cameras and other DelTRAC infrastructure will be installed. Road construction will begin on the west side of the project. A temporary six-lane road will be constructed to divert traffic from a section of US202 that needs upgrade and repair. Rockland Road will be temporarily closed at this time and will not reopen until the new West Park Drive is converted to its planned two-lane roadway design. Traffic will be diverted to the temporary West Park Drive once a new connector road between US202 and Foulk Road is in place. This will allow for more efficient and safe construction of two new overpass/bridge structures. These new structures are essential in helping to separate local and regional traffic in the gateway and to allow for bicycle path and pedestrian connections. With this critical section of US202 complete, West Park Drive will be reduced to its planned two-lane design and all other East Park Roadways will be constructed. The creation of a new Spur Road from SR141 and additional road widening and landscape improvements to sections of US202 will complete the transportation elements of the gateway.

**Environment**

Environmental restoration and improvements will first occur in the West Park with the restoration of neglected portions of Alapocas Run. These restorations will breathe new life into deteriorated wetland areas. Signature landscaping, consistent with the heritage of Delaware and the Brandywine Hundred community, will bring park-goers through over 152 acres of natural environment in both the East and West Parks. A new water quality basin will be located in the East Park and will be integrated with Matson Run. This new basin will provide local environmental education opportunities while offering a habitat for wildlife.

**Historic Restoration**

Historic restoration will occur at many locations throughout the project. The Blue Ball Dairy Barn, in the West Park, will be the main focus of the planned historic restorations. The Dairy Barn is an architecturally unique structure with a strong presence on US202 and will be restored for adaptive reuse. Other planned improvements will include the rehabilitation of the Bird Husband House and the Murphy House along with the stabilization of the existing Weldin Plantation ruins.

**Transit Improvements**

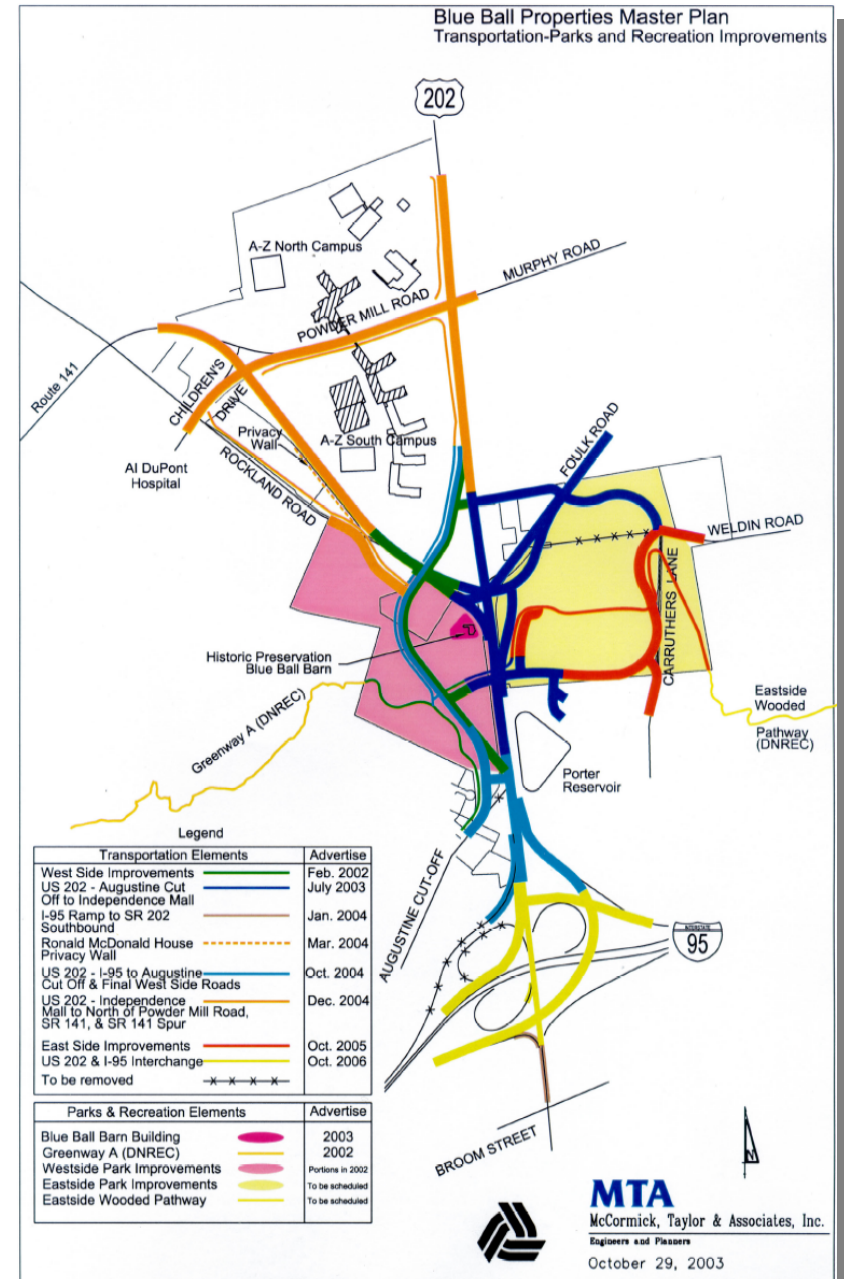
Transit Center at AstraZeneca (AZ) [Project No. 24-106-01] – Construction of bus transfer area for enhanced bus services along US202 and SR141.

**BLUE BALL PROPERTIES, SR141 AND US202 AREA IMPROVEMENTS (CONTINUED)****Delaware Department of Natural Resources and Environmental Control (DNREC)  
Led Improvements:**

- A. **West Side Wooded Greenway [Project No. 22-106-03]** – This project will provide a greenway through the Alapocas Woods.
- B. **East Side Wooded Greenway [Project No. 22-106-03]** – This project will provide a greenway through the Rock Manor Golf Course, and along Talley Road to connect to Rockwood Museum.
- C. **Bird Husband and Murphy Houses** – This project includes stabilization and restoration of these two historic structures.
- D. **Blue Ball Barn [Project No.'s 22-106-03 and 24-106-02]** – This project includes adaptive reuse of the Historic Blue Ball Barn on US202.

**DelDOT Led or No Lead Improvements:**

- E. **Stormwater Management – Payback to Astra-Zeneca [Project No. 22-106-05]** – This project includes regional stormwater management of Alapocas Run constructed by Astra-Zeneca. Payback provisions are enabled through the Bond Bill.
- F. **Stormwater Management – Matson Run and Park Amenities [Project No. 22-106-03]** – This project includes regional stormwater management along Matson Run. This project could include transportation improvements on the East Side to support the Matson Run regional stormwater management goals. The project will also include the DNREC elements of the Blue Ball Master Plan.



***BLUE BALL PROPERTIES, SR141 AND US202 AREA IMPROVEMENTS (CONTINUED)******DelDOT Led or No Lead Improvements (Continued)***

- G. **West Side Park Improvements** – This project will include additional improvements to West Park to support the Master Plan.
- H. **East Side Park Improvements [Project No. 22-106-03]** – This project includes improvements to East Park to support the Master Plan.
- I. **Ronald McDonald House Access [Project No. 23-106-04]** – Project includes construction of new access into the Ronald McDonald House on Rockland Road to support better local circulation and pedestrian access.
- J. **Ronald McDonald House Privacy Wall [Project No. 24-106-03]** – This project involves the construction of a wall along the future SR141 Spur behind the Ronald McDonald House, per approved environmental assessment.
- K. **US202, Concord Pike/Rockland Road Material Pile [Project No. 22-106-04]** – This project includes removal of large material pile at US202/Rockland Road.
- L. **US202, Concord Pike Sign Structures [Project No. 23-106-03]** – This project involves the fabrication of two sign structures as part of US202, Augustine Cutoff to Independence Mall contract.

***Transportation Elements:*****Projects M – R - Involve Preliminary Engineering and Acquisition of Right of Way.**

- M. **West Side Improvements [Project No. 22-106-01]** – This project includes a temporary six-lane bypass roadway, relocation of Rockland Road, West Side Park greenways, stormwater management, stream restoration, landscaping and an underground utility corridor.
- N. **US202, Concord Pike, Augustine Cutoff to Independence Mall [Project No. 22-106-06]** – This project includes improvements on US202, including two new underpasses at Foulk Road and the new East Park Drive, Weldin Road relocation and a road connector between US202 and Foulk Road.
- O. **East Side Roads [Project No. 23-106-05]** – This project includes a new East Park Drive; stormwater management along Matson Run; and greenway trails and other amenities of East Park.
- P. **I-95 Northbound Ramp to US202 Southbound [Project No. 23-106-07]** – This project includes the reconstruction of the ramp to address existing weaving problems. Also, signaling of the ramp.

***BLUE BALL PROPERTIES, SR141 AND US202 AREA IMPROVEMENTS (CONTINUED)******Transportation Elements (Continued):***

- Q. **US202, Concord Pike, Independence Mall to North of Powder Mill Road [Project No. 24-106-06]** – Improvements on US202 include additional turn lanes at the US202 and Powder Mill Road intersection; construction of the new SR141 Spur; realignment of Powder Mill Road; and trail along Rockland Road.
- R. **US202, Concord Pike, I-95 to Augustine Cutoff [Project No. 24-106-05]** – This project includes improvements on US202 and completion of West Park Drive.

**PROJECT JUSTIFICATION:** This project supports economic development by encouraging business development in the area, addressing transportation problems, preserving historic and environmental resources and enhancing recreational opportunities. The Master Plan for the project is dated January 2001.

<b>County:</b>	New Castle
<b>Municipality:</b>	
<b>Funding Program:</b>	Road System - Arterials
<b>Functional Category:</b>	Expansion
<b>Representative District:</b>	6, 11
<b>Senatorial District:</b>	1, 4



**BLUE BALL PROPERTIES, SR141 AND US202 AREA IMPROVEMENTS (CONTINUED)****PROJECT FUNDING INFORMATION**

Project	Funding Type	Original Estimate	Current Estimate	Authorization	Committed as of 12/31/04	Expended as of 12/31/04	Committed Unexpended as of 12/31/04	Authorization Available
Blue Ball Properties, SR141 and US202 Area Improvements		\$ 162,259.0						
Prior Years	State			\$ 90,532.7	\$ 75,940.0	\$ 42,682.6	\$ 33,257.4	\$ 14,592.7
	Federal			\$ 52,111.6	\$ 52,111.6	\$ 18,171.0	\$ 33,940.6	\$ 0.0
	Other			\$ 372.4	\$ 372.4	\$ 0.0	\$ 372.4	\$ 0.0
FY 2005	State		\$ 175,679.9	\$ 9,454.8	\$ 0.0	\$ 0.0	\$ 0.0	\$ 24,047.5
	Federal			\$ 21,208.4	\$ 21,208.4	\$ 0.0	\$ 21,208.4	\$ 0.0
	Other			\$ 0.0	\$ 0.0	\$ 0.0	\$ 0.0	\$ 0.0
FY 2006 Request	State			\$ 2,000.0				\$ 26,047.5
	Federal			\$ 0.0				\$ 0.0
	Other			\$ 0.0				\$ 0.0
FY 2007 Projected	State							
	Federal							
	Other							
FY 2008 Projected	State							
	Federal							
	Other							
FY 2009-2011 Projected	State							
	Federal							
	Other							
Total Projected	State			\$ 101,987.5	\$ 75,940.0			\$ 26,047.5
	Federal			\$ 73,320.0	\$ 73,320.0			\$ 0.0
	Other			\$ 372.4	\$ 372.4			\$ 0.0
Total All Funds		\$ 162,259.0	\$ 175,679.9	\$ 175,679.9	\$ 149,632.4	\$ 60,853.6	\$ 88,778.8	\$ 26,047.5



**BLUE BALL PROPERTIES, SR141 AND US202 AREA IMPROVEMENTS (CONTINUED)****PROJECT TIMELINE INFORMATION**

Project #	Description	Phase	Funding Schedule	Current Estimate	Prior Years	FY 2005	FY 2006	FY 2007	FY 2008	FY 2009 -2011
	<b>Blue Ball Properties, SR141 and US202 Area Improvements</b>									
	<b>Program</b>	PE, C	100% ST	\$ 44,707.5	\$ 44,707.5	\$ 0.0	\$ 0.0	\$ 0.0	\$ 0.0	\$ 0.0
		PE, C	100% PRIVATE	372.4	372.4	0.0	0.0	0.0	0.0	0.0
		PE, C	100% FHWA	5,516.2	0.0	5,516.2	0.0	0.0	0.0	0.0
24-106-01	Transit Center at Astra-Zeneca	PE	100% ST	37.0	37.0	0.0	0.0	0.0	0.0	0.0
		RW	100% ST	11.0	0.0	11.0	0.0	0.0	0.0	0.0
		C	100% ST	810.0	677.3	132.7	0.0	0.0	0.0	0.0
	<b>DNREC Led Improvements</b>									
22-106-03	A./B. West and East Side Wooded Greenways	PE, C	100% ST	1,432.0	1,432.0	0.0	0.0	0.0	0.0	0.0
	C. Bird Husbands and Murphy Houses	PE, C	100% ST	495.0	495.0	0.0	0.0	0.0	0.0	0.0
22-106-03	D. Blue Ball Barn	PE, C	100% ST	11,492.0	4,492.0	5,000.0	2,000.0	0.0	0.0	0.0
24-106-02										
	<b>DelDOT Led or No Lead Improvements</b>									
22-106-05	E. Stormwater Management - Payback to Astra-Zeneca	PE	100% ST	400.0	400.0	0.0	0.0	0.0	0.0	0.0
		C	100% ST	2,000.0	2,000.0	0.0	0.0	0.0	0.0	0.0
22-106-03	F. Stormwater Management - Matson Run & Park Amenities	PE, C	100% ST	100.0	100.0	0.0	0.0	0.0	0.0	0.0
		PE, C	100% ST	1,500.0	1,500.0	0.0	0.0	0.0	0.0	0.0
	G. West Side Park Improvements	C	100% ST	83.0	83.0	0.0	0.0	0.0	0.0	0.0
22-106-03	H. East Side Park Improvements	PE	100% ST	232.0	232.0	0.0	0.0	0.0	0.0	0.0
		C	100% ST	3,194.0	3,194.0	0.0	0.0	0.0	0.0	0.0
23-106-04	I. Ronald McDonald House Access	C	100% ST	352.0	352.0	0.0	0.0	0.0	0.0	0.0
24-106-03	J. Ronald McDonald House Privacy Wall	C	80% FHWA	1,900.0	1,484.7	415.3	0.0	0.0	0.0	0.0
22-106-04	K. US202, Concord Pike / Rockland Road Material Pile	C	100% ST	1,760.0	1,760.0	0.0	0.0	0.0	0.0	0.0



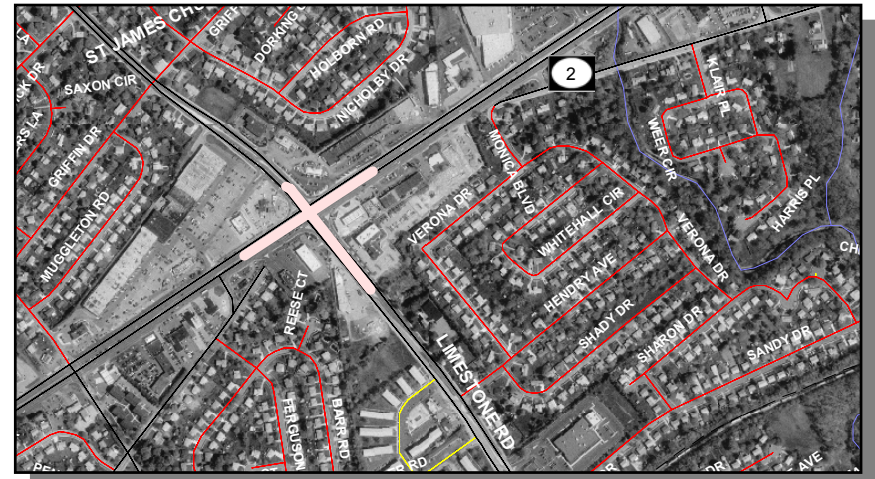
**BLUE BALL PROPERTIES, SR141 AND US202 AREA IMPROVEMENTS (CONTINUED)****PROJECT TIMELINE INFORMATION**

Project #	Description	Phase	Funding Schedule	Current Estimate	Prior Years	FY 2005	FY 2006	FY 2007	FY 2008	FY 2009 -2011
	<b>Blue Ball Properties, SR141 and US202 Area Improvements (Continued)</b>									
23-106-03	L. US202, Concord Pike Sign Structures	C	100% ST	510.0	510.0	0.0	0.0	0.0	0.0	0.0
	<i>Transportation Elements</i>									
20-106-01	Projects M - R Preliminary Engineering and Acquisition of Right of Way	PE	11% FHWA	11,300.0	11,300.0	0.0	0.0	0.0	0.0	0.0
22-106-01	M. West Side Improvements	C	80% FHWA	17,700.0	17,700.0	0.0	0.0	0.0	0.0	0.0
22-106-06	N. US202, Concord Pike, Augustine Cutoff to Independence Mall	RW	100% ST	3,200.0	3,200.0	0.0	0.0	0.0	0.0	0.0
		C	80% FHWA	28,800.0	28,800.0	0.0	0.0	0.0	0.0	0.0
23-106-05	O. East Side Roads	RW	100% ST	541.6	541.6	0.0	0.0	0.0	0.0	0.0
		C	100% FHWA	5,209.6	5,209.6	0.0	0.0	0.0	0.0	0.0
		C	100% ST	1,690.4	1,302.4	388.0	0.0	0.0	0.0	0.0
23-106-07	P. I-95 Northbound Ramp to US202 Southbound	C	80% FHWA	1,889.0	1,889.0	0.0	0.0	0.0	0.0	0.0
24-106-06	Q. US202, Concord Pike, Independence Mall to North of Powder Mill Road	PE	100% ST	962.0	962.0	0.0	0.0	0.0	0.0	0.0
		RW	100% ST	541.6	541.6	0.0	0.0	0.0	0.0	0.0
		C	80% FHWA	19,200.0	0.0	19,200.0	0.0	0.0	0.0	0.0
24-106-05	R. US202, Concord Pike, I-95 to Augustine Cutoff	RW	100% ST	541.6	541.6	0.0	0.0	0.0	0.0	0.0
		C	80% FHWA	7,200.0	7,200.0	0.0	0.0	0.0	0.0	0.0
	Total All Funds			\$ 175,679.9	\$ 143,016.7	\$ 30,663.2	\$ 2,000.0	\$ 0.0	\$ 0.0	\$ 0.0

**CHURCHMAN'S CROSSING CORRIDOR IMPROVEMENTS [Project No. 20-041-01]****PROJECT SCOPE/DESCRIPTION:**

**Intersection Improvements:** The intersections listed below will be programmed for design and construction as conditions warrant, per the triggers recommended in the Churchman's Crossing Study. The funding shown is timed to be available when these intersections meet the triggers. Monitoring of traffic conditions will be done annually and project schedules adjusted accordingly.

- **SR 2, Kirkwood Highway/N355, Harmony Road** – Safety improvements will be determined after monitoring traffic following the construction of N355, Harmony Road traffic calming measures.
- **SR 2, Kirkwood Highway/SR 7, Limestone Road [Project No. 20-111-02]** – This project added an additional left-turn lane to eastbound and westbound SR 2, Kirkwood Highway. The project also added pedestrian and transit improvements by adding sidewalks on both sides of SR 2, Kirkwood Highway from Griffin Drive to SR 7, Limestone Road; enlarging channelization islands; adding pedestrian ramps, crosswalks, and pedestrian signals at the SR 2, Kirkwood Highway/SR 7, Limestone Road intersection and upgrading four existing bus stops. This project included mill and overlay of the existing pavement on SR 2, Kirkwood Highway on both sides of the intersection and the existing pavement on SR 7, Limestone Road between S318, Milltown Road and SR 4, Newport Stanton Pike. Construction was completed Fall, 2002.

**SR 2, Kirkwood Highway/N355, Harmony Road****SR 2, Kirkwood Highway/SR 7, Limestone Road**



***CHURCHMAN'S CROSSING CORRIDOR IMPROVEMENTS (CONTINUED)***

- **SR 4, Ogletown Stanton Road/N355, Harmony Road [Project No. 24-116-01]** – Intersection improvements to be re-evaluated based on additional committed development in the area including the Christiana Hospital.

***SR 4, Ogletown Stanton Road/N355, Harmony Road***

- **SR 4, Ogletown Stanton Road/SR 7, Christiana Stanton Road Phase I, Stanton Split [Project No. 20-111-01]**– This project will add a third westbound SR 4, Ogletown Stanton Road through lane, add a third eastbound SR 7, Christiana Stanton Road left turn lane to northbound SR 7, Christiana Stanton Road, and will increase the length of the southbound SR 7, Christiana Stanton Road left-turn lane to eastbound SR 4, Ogletown Stanton Road storage lane. The project will also improve pedestrian and transit access by providing sidewalks on the west side of SR 7, Christiana Stanton road to the school entrance and on the west side of Elm Street between eastbound and westbound SR 4, Ogletown Stanton Road. The project will also add pedestrian ramps, crosswalks and pedestrian signals at the SR 4, Ogletown Stanton Road/SR 7, Christiana Stanton Road intersection and upgrade one existing bus stop.





***CHURCHMAN'S CROSSING CORRIDOR IMPROVEMENTS (CONTINUED)***

- **SR 4, Ogletown Stanton Road/SR 7, Christiana Stanton Road Phase II (J. P. Morgan)** – A third left-turn lane on eastbound SR 4, Ogletown Stanton Road and a second right-turn lane on northbound SR 7, Christiana Stanton Road were constructed in 2004 as part of approved development projects. The intersection will continue to be monitored and the scope evaluated to accommodate approved development expansion as needed.

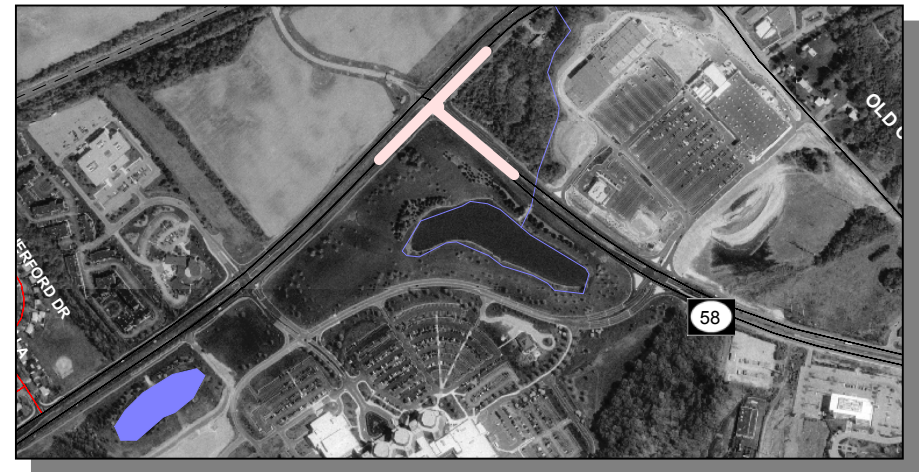


***SR 4, Ogletown Stanton Road***



- **SR 4, Ogletown Stanton Road/SR 58, Churchman's Road** - Intersection improvements to be re-evaluated based on additional committed development in the area including the Christiana Hospital.

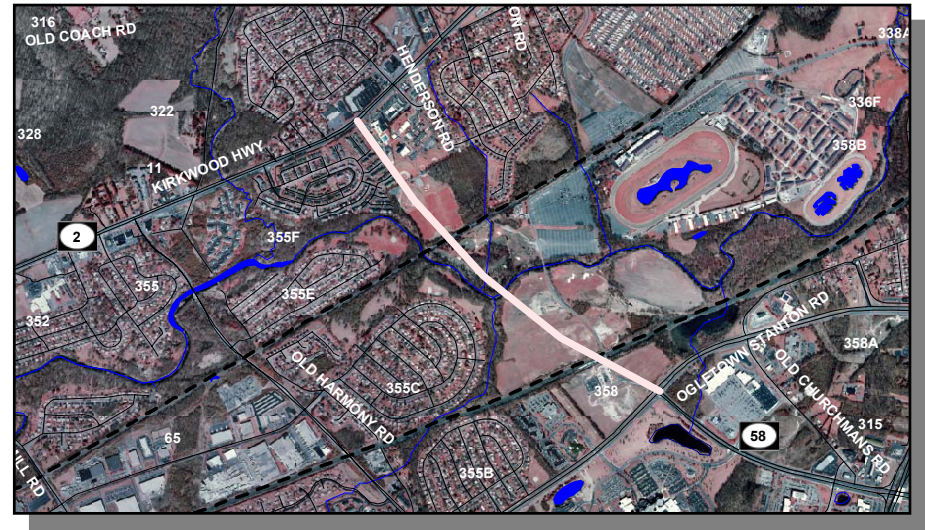
***SR 4, Ogletown Stanton Road/SR 58, Churchman's Road***



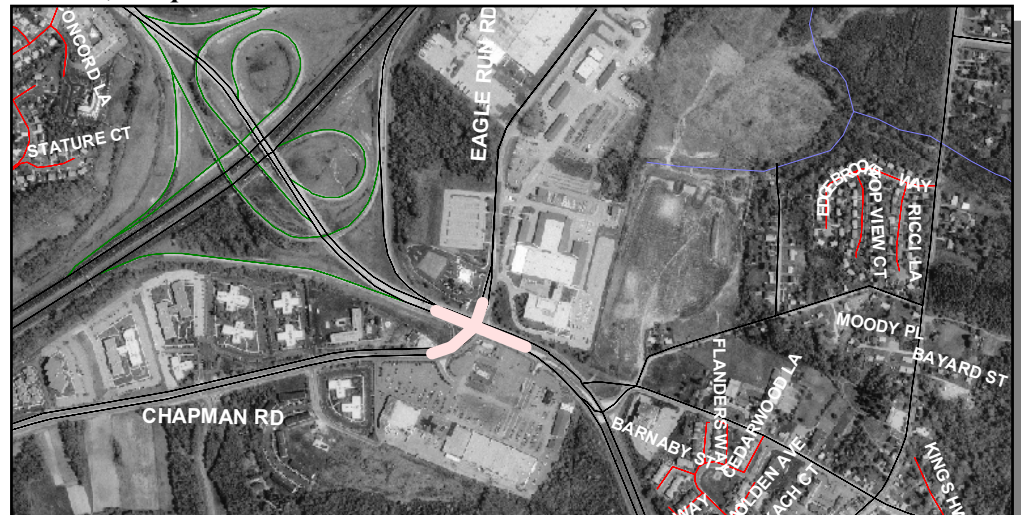


***CHURCHMAN'S CROSSING CORRIDOR IMPROVEMENTS (CONTINUED)***

- **SR 58, Churchman's Road from SR 4, Ogletown Stanton Road to SR 2, Kirkwood Highway** – Project Development will commence in FY 2006 to determine the best route for the extension of SR 58, Churchman's Road to SR 2, Kirkwood Highway, through Delaware Park.. However, due to the current Air Quality Conformity Freeze in New Castle County, no new roadway project or phase of one that expands capacity of the roadway system can move into the next phase until the freeze is remedied.



- **SR273, Christiana Ogletown Road/N347, Chapman Road** – This project contains potential safety and capacity improvements and will be studied as part of the SR273 Corridor Study.

***SR273, Christiana Ogletown Road/N347, Chapman Road***



***CHURCHMAN'S CROSSING CORRIDOR IMPROVEMENTS (CONTINUED)***

- **SR273, Christiana Ogletown Road/N355, Harmony Road** – Safety improvements will be studied after monitoring traffic following the construction of Harmony Road traffic calming measures.

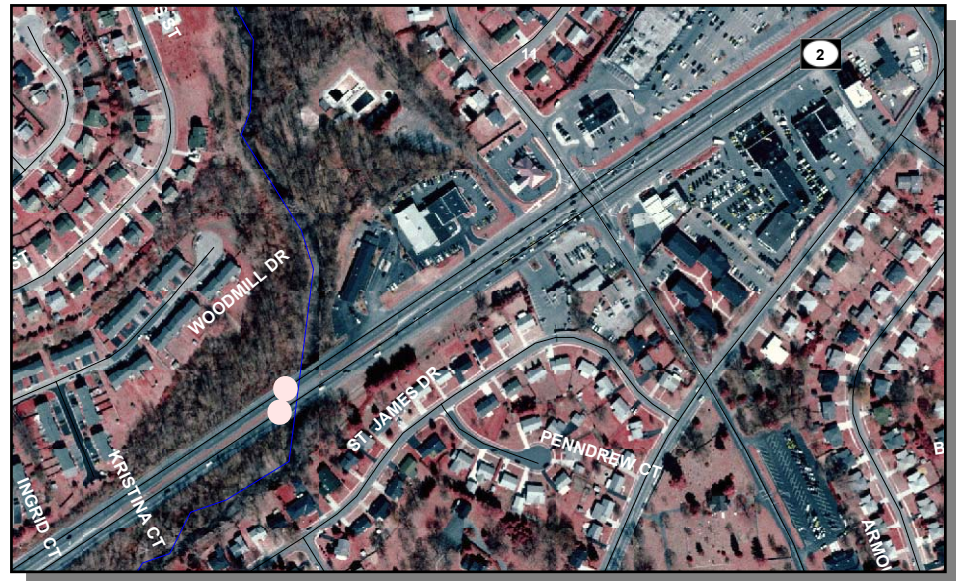
*Westbound SR273, Christiana Ogletown Road*





**CHURCHMAN'S CROSSING CORRIDOR IMPROVEMENTS (CONTINUED)****Multi-modal Improvements**

- **Areawide Sidewalks/Bus Stops [Project No.'s 99-019-03, 21-116-01, 22-116-01, 23-116-01 and 25-116-01]** – This group of projects will add sidewalk segments throughout the Churchman's Crossing area in an effort to improve pedestrian connections between communities, businesses, schools, recreational destinations and transit service. Signalized intersections, channelization islands, pedestrian ramps, crosswalks and pedestrian signals will be added. These projects will also upgrade existing or add new bus stops throughout the Churchman's Crossing area in an effort to make transit more attractive and accessible to existing/potential users.
- **Bridge 1-234 Maintenance Pedestrian Improvements** – Pedestrian improvements will be added on the north side of SR 2, Kirkwood Highway between Woodmill Drive and Griffin Drive. Bridge maintenance, including a deck replacement, will also be included in the contract.





***CHURCHMAN'S CROSSING CORRIDOR IMPROVEMENTS (CONTINUED)***

- N352, Red Mill Road Sidewalk [Project No. 21-116-02]** – This project provided a new sidewalk connection along the west side of N352, Red Mill Road between Mary Ella Drive and north of Darwin Drive, helping to link neighboring communities (Millrace, Sycamore Gardens, Admiral Club, and Red Mill Farms). This project also added bicycle lanes through the project limits to better delineate Bike Route 1 and replaced an existing bypass lane with a left turn lane into Mary Ella Drive from northbound N352, Red Mill Road. To improve safety, the project added physical medians to delineate safe travel paths, protected the left turn into Mary Ella Drive and improved the sight distance along N352, Red Mill Road at the intersection of Mary Ella Drive. Construction was completed Winter, 2002.



**PROJECT JUSTIFICATION:** These projects are being implemented as a result of the Churchman's Crossing Study.

<b>County:</b>	New Castle
<b>Municipality:</b>	
<b>Funding Program:</b>	Road System - Arterials
<b>Functional Category:</b>	Management
<b>Representative District:</b>	18, 19, 21, 24, 26
<b>Senatorial District:</b>	8, 9



**CHURCHMAN'S CROSSING CORRIDOR IMPROVEMENTS (CONTINUED)****PROJECT FUNDING INFORMATION**

Project	Funding Type	Original Estimate	Current Estimate	Authorization	Committed as of 12/31/04	Expended as of 12/31/04	Committed Unexpended as of 12/31/04	Authorization Available
Churchman's Crossing Corridor Improvements		\$ 55,165.3						
Prior Years	State			\$ 15,471.1	\$ 15,471.1	\$ 8,347.3	\$ 7,123.8	\$ 0.0
	Federal			\$ 18,088.0	\$ 18,088.0	\$ 12,034.3	\$ 6,053.7	\$ 0.0
	Other			\$ 275.0	\$ 275.0	\$ 268.6	\$ 6.4	\$ 0.0
FY 2005	State		\$ 56,373.8	\$ 2,085.1	\$ 89.9	\$ 0.0	\$ 89.9	\$ 1,995.2
	Federal			\$ 1,754.6	\$ 1,615.3	\$ 0.0	\$ 1,615.3	\$ 139.3
	Other			\$ 0.0	\$ 0.0	\$ 0.0	\$ 0.0	\$ 0.0
FY 2006 Request	State			\$ 340.0				\$ 2,335.2
	Federal			\$ 660.0				\$ 799.3
	Other			\$ 0.0				\$ 0.0
FY 2007 Projected	State			\$ 2,210.0				\$ 4,545.2
	Federal			\$ 6,640.0				\$ 7,439.3
	Other			\$ 0.0				\$ 0.0
FY 2008 Projected	State			\$ 1,250.0				\$ 5,795.2
	Federal			\$ 1,600.0				\$ 9,039.3
	Other			\$ 0.0				\$ 0.0
FY 2009-2011 Projected	State			\$ 1,200.0				\$ 6,995.2
	Federal			\$ 4,800.0				\$ 13,839.3
	Other			\$ 0.0				\$ 0.0
Total Projected	State			\$ 22,556.2	\$ 15,561.0			\$ 6,995.2
	Federal			\$ 33,542.6	\$ 19,703.3			\$ 13,839.3
	Other			\$ 275.0	\$ 275.0			\$ 0.0
Total All Funds		\$ 55,165.3	\$ 56,373.8	\$ 56,373.8	\$ 35,539.3	\$ 20,650.1	\$ 14,889.2	\$ 20,834.5

**CHURCHMAN'S CROSSING CORRIDOR IMPROVEMENTS (CONTINUED)****PROJECT TIMELINE INFORMATION**

Project #	Description	Phase	Funding Schedule	Current Estimate	Prior Years	FY 2005	FY 2006	FY 2007	FY 2008	FY 2009 -2011
	<b>Churchman's Crossing Corridor Improvements</b>									
20-041-01	<i>Projects</i>	PE, RW, C	80% FHWA	\$ 6,393.3	\$ 4,500.0	\$ 1,893.3	\$ 0.0	\$ 0.0	\$ 0.0	\$ 0.0
		PE, RW, C	100% ST	4,847.1	4,847.1	0.0	0.0	0.0	0.0	0.0
		PE, RW, C	66% FHWA	1,000.0	0.0	0.0	1,000.0	0.0	0.0	0.0
	<i>Program Management</i>	MGT	100% ST	1,200.0	450.0	150.0	0.0	150.0	450.0	0.0
	<i>Enhanced Transit Service</i>	PRO	100% ST	450.0	450.0	0.0	0.0	0.0	0.0	0.0
	<i>Intersection Improvements</i>									
	SR 2, Kirkwood Highway/N355, Harmony Road	PE	100% ST	240.0	0.0	240.0	0.0	0.0	0.0	0.0
		C	80% FHWA	1,500.0	0.0	0.0	0.0	1,500.0	0.0	0.0
20-111-02	SR 2, Kirkwood Highway/SR 7, Limestone Road	PE	100% ST	40.0	40.0	0.0	0.0	0.0	0.0	0.0
		RW	100% ST	20.0	20.0	0.0	0.0	0.0	0.0	0.0
		C	100% PRIVATE	25.0	25.0	0.0	0.0	0.0	0.0	0.0
		C	80% FHWA	1,780.0	1,780.0	0.0	0.0	0.0	0.0	0.0
24-116-01	SR 4, Ogletown Stanton Road/N355, Harmony Road	PD	100% ST	297.9	250.0	47.9	0.0	0.0	0.0	0.0
		PE	100% ST	250.0	250.0	0.0	0.0	0.0	0.0	0.0
		C	80% FHWA	2,500.0	0.0	0.0	0.0	2,500.0	0.0	0.0
20-111-01	SR 4, Ogletown Stanton Road/SR 7, Christiana Stanton Road Phase I, Stanton Split	PE	100% ST	0.0	0.0	0.0	0.0	0.0	0.0	0.0
		RW	100% ST	425.0	425.0	0.0	0.0	0.0	0.0	0.0
		C	80% FHWA	0.0	0.0	0.0	0.0	0.0	0.0	0.0
	SR 4, Ogletown Stanton Road/SR 7, Christiana Stanton Road, Phase II (J.P. Morgan)	PD	100% ST	300.0	300.0	0.0	0.0	0.0	0.0	0.0
		PE	100% ST	400.0	0.0	0.0	0.0	0.0	400.0	0.0
		RW	100% ST	0.0	0.0	0.0	0.0	0.0	0.0	0.0
		C	80% FHWA	6,000.0	0.0	0.0	0.0	0.0	0.0	6,000.0

**CHURCHMAN'S CROSSING CORRIDOR IMPROVEMENTS (CONTINUED)****PROJECT TIMELINE INFORMATION**

Project #	Description	Phase	Funding Schedule	Current Estimate	Prior Years	FY 2005	FY 2006	FY 2007	FY 2008	FY 2009 -2011
	<b>Churchman's Crossing Corridor Improvements (Continued)</b>									
	SR 4, Ogletown Stanton Road /SR 58, Churchman's Road	PD	100% ST	80.0	80.0	0.0	0.0	0.0	0.0	0.0
		PE	100% ST	320.0	320.0	0.0	0.0	0.0	0.0	0.0
		C*	80% FHWA	0.0	0.0	0.0	0.0	0.0	0.0	0.0
	SR 58, Churchman's Road from SR 4, Ogletown Stanton Road to SR 2, Kirkwood Highway	PD	100% ST	0.0	0.0	0.0	0.0	0.0	0.0	0.0
	SR273, Christiana Ogletown Road and N347, Chapman Road	PD	100% ST	400.0	400.0	0.0	0.0	0.0	0.0	0.0
		PE	100% ST	400.0	0.0	0.0	0.0	400.0	0.0	0.0
		RW	100% ST	0.0	0.0	0.0	0.0	0.0	0.0	0.0
		C	80% FHWA	2,000.0	0.0	0.0	0.0	0.0	2,000.0	0.0
	SR273, Christiana Ogletown Road and N355, Harmony Road	PE	100% ST	140.0	140.0	0.0	0.0	0.0	0.0	0.0
		C*	80% FHWA	0.0	0.0	0.0	0.0	0.0	0.0	0.0
23-041-01	SR273, Christiana Bypass and Main Street, Christiana	PD	100% ST	131.0	131.0	0.0	0.0	0.0	0.0	0.0
		PE	100% ST	530.0	530.0	0.0	0.0	0.0	0.0	0.0
		RW	80% FHWA	5,000.0	5,000.0	0.0	0.0	0.0	0.0	0.0
		C	80% FHWA	5,240.0	5,240.0	0.0	0.0	0.0	0.0	0.0
	<b>Multi-Modal Improvements</b>									
99-019-03	<b>Areawide Sidewalks / Bus Stops</b>	PE	100% ST	736.0	486.0	250.0	0.0	0.0	0.0	0.0
21-116-01		RW	100% ST	580.0	580.0	0.0	0.0	0.0	0.0	0.0
22-116-01		C	80% FHWA	7,640.0	5,140.0	0.0	0.0	2,500.0	0.0	0.0
23-116-01										
25-116-01										
	BR 1-234 Pedestrian Improvements	PE	80% FHWA	300.0	0.0	300.0	0.0	0.0	0.0	0.0
		C	80% FHWA	1,800.0	0.0	0.0	0.0	1,800.0	0.0	0.0

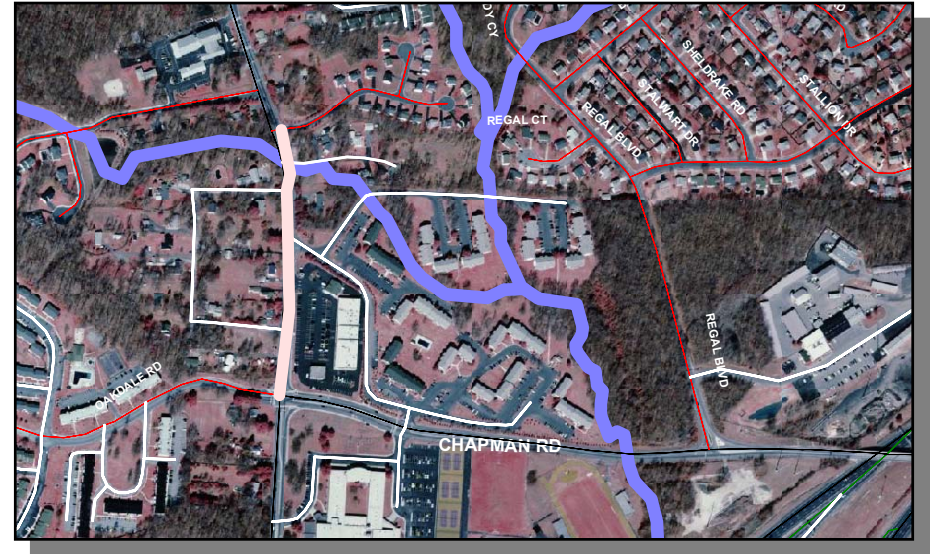
**CHURCHMAN'S CROSSING CORRIDOR IMPROVEMENTS (CONTINUED)****PROJECT TIMELINE INFORMATION**

Project #	Description	Phase	Funding Schedule	Current Estimate	Prior Years	FY 2005	FY 2006	FY 2007	FY 2008	FY 2009 -2011
	<b>Churchman's Crossing Corridor Improvements (Continued)</b>									
95-116-01	Churchman's Area Improvements	C	100% PRIVATE	250.0	250.0	0.0	0.0	0.0	0.0	0.0
21-116-02	N352, Red Mill Road Sidewalk	PE	100% ST	283.6	0.0	283.6	0.0	0.0	0.0	0.0
		RW	100% ST	100.0	100.0	0.0	0.0	0.0	0.0	0.0
		C	80% FHWA	950.0	950.0	0.0	0.0	0.0	0.0	0.0
	SR 58, Churchman's Road, SR 7, Christiana Stanton Road	RW	100% ST	650.0	650.0	0.0	0.0	0.0	0.0	0.0
		C*	80% FHWA	0.0	0.0	0.0	0.0	0.0	0.0	0.0
23-041-02	SR273, Christina Bypass, N347, Chapman Road to SR 7, Christiana Stanton Road	PE	100% ST	139.0	139.0	0.0	0.0	0.0	0.0	0.0
		RW	100% ST	1.0	1.0	0.0	0.0	0.0	0.0	0.0
		C	100% ST	1,034.9	360.0	674.9	0.0	0.0	0.0	0.0
	Total All Funds			\$ 56,373.8	\$ 33,834.1	\$ 3,839.7	\$ 1,000.0	\$ 8,850.0	\$ 2,850.0	\$ 6,000.0

***N348, SALEM CHURCH ROAD, N347, CHAPMAN ROAD TO DUNSMORE DRIVE [Project No. 22-041-01]***

**PROJECT SCOPE/DESCRIPTION:** This project was initiated to alleviate safety concerns along N348, Salem Church Road in the area of the Sandalwood Drive intersection and at the entrance to the Salem Village Square Shopping Center. The scope involves constructing a new traffic signal at the shopping center entrance and modifying the Sandalwood Drive intersection to allow only right-in/right-out movements. A concrete median on N348, Salem Church Road will be constructed for safety, as well as a dedicated left-turn lane into the shopping center from N348, Salem Church Road. By removing free left turns from both intersections, it is felt that this concept will have the greatest positive impact on safety while minimizing impacts to residents, business and the environment. In addition, this project would include upgrading the existing traffic signal and providing adequate pedestrian access at the intersection of N348, Salem Church Road and N347, Chapman Road.

**PROJECT JUSTIFICATION:** This project is a result of safety concerns expressed by the public and legislative representatives due to high accident frequency from vehicles turning left out of Salem Village Shopping Center and Sandalwood Drive entrances. The existing conditions along N348, Salem Church Road warrant the need for a signal at that location.



<b>County:</b>	New Castle
<b>Municipality:</b>	
<b>Funding Program:</b>	Road System - Arterials
<b>Functional Category:</b>	Management
<b>Representative District:</b>	24, 26
<b>Senatorial District:</b>	11



***N348, SALEM CHURCH ROAD, N347, CHAPMAN ROAD TO DUNSMORE DRIVE (CONTINUED)*****PROJECT FUNDING INFORMATION**

Project	Funding Type	Original Estimate	Current Estimate	Authorization	Committed as of 12/31/04	Expended as of 12/31/04	Committed Unexpended as of 12/31/04	Authorization Available
N348, Salem Church Road, N347, Chapman Road to Dunsmore Drive		\$ 617.2						
Prior Years	State			\$ 577.4	\$ 577.4	\$ 389.9	\$ 187.5	\$ 0.0
	Federal			\$ 643.0	\$ 616.6	\$ 29.2	\$ 587.4	\$ 26.4
	Other			\$ 0.0	\$ 0.0	\$ 0.0	\$ 0.0	\$ 0.0
FY 2005	State		\$ 1,223.8	\$ 3.4	\$ 3.4	\$ 0.0	\$ 3.4	\$ 0.0
	Federal			\$ 0.0	\$ 0.0	\$ 0.0	\$ 0.0	\$ 26.4
	Other			\$ 0.0	\$ 0.0	\$ 0.0	\$ 0.0	\$ 0.0
FY 2006 Request	State							
	Federal							
	Other							
FY 2007 Projected	State							
	Federal							
	Other							
FY 2008 Projected	State							
	Federal							
	Other							
FY 2009-2011 Projected	State							
	Federal							
	Other							
Total Projected	State			\$ 580.8	\$ 580.8			\$ 0.0
	Federal			\$ 643.0	\$ 616.6			\$ 26.4
	Other			\$ 0.0	\$ 0.0			\$ 0.0
Total All Funds		\$ 617.2	\$ 1,223.8	\$ 1,223.8	\$ 1,197.4	\$ 419.1	\$ 778.3	\$ 26.4



***N348, SALEM CHURCH ROAD, N347, CHAPMAN ROAD TO DUNSMORE DRIVE (CONTINUED)*****PROJECT TIMELINE INFORMATION**

Project #	Description	Phase	Funding Schedule	Current Estimate	Prior Years	FY 2005	FY 2006	FY 2007	FY 2008	FY 2009 -2011
22-041-01	<b>N348, Salem Church Road, N347, Chapman Road to Dunsmore Road</b>	PE	100% ST	\$ 295.6	\$ 295.6	\$ 0.0	\$ 0.0	\$ 0.0	\$ 0.0	\$ 0.0
		RW	100% ST	124.4	121.0	3.4	0.0	0.0	0.0	0.0
		C	80% FHWA	803.8	803.8	0.0	0.0	0.0	0.0	0.0
	Total All Funds			\$ 1,223.8	\$ 1,220.4	\$ 3.4	\$ 0.0	\$ 0.0	\$ 0.0	\$ 0.0