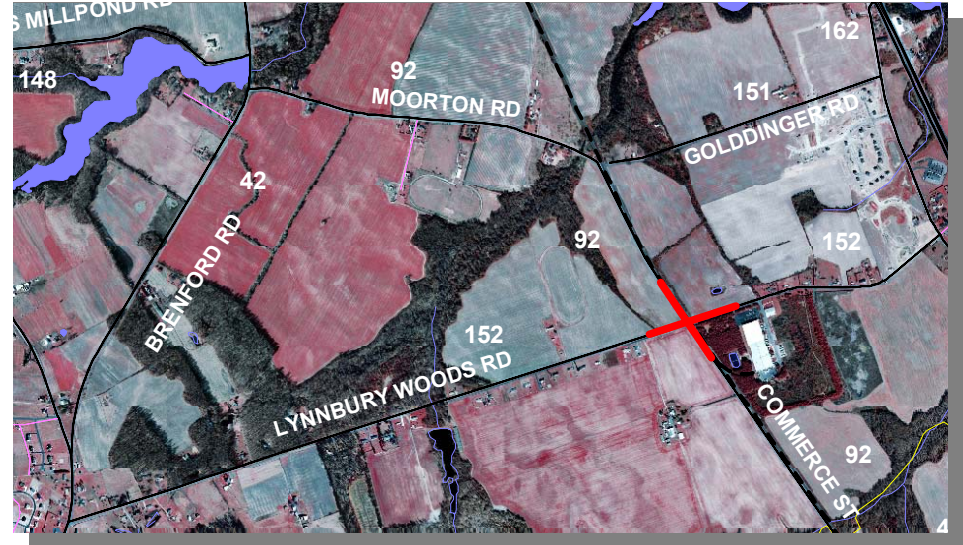


SR 15, MOORTON ROAD AND K152, LYNNBURY WOODS ROAD, INTERSECTION AND RAIL CROSSING IMPROVEMENTS [ID No. 04-00585]

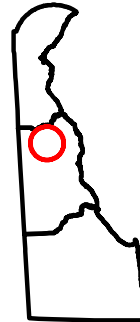
PROJECT SCOPE/DESCRIPTION: The turning movement for trucks exiting the PPG Plant on Lynnbury Woods Road onto Moorton Road is very difficult. A narrow rail crossing is very close to the intersection, which limits the turning movements. The DelDOT rail group will investigate the possibility of widening the rail crossing to better enable trucks to make this movement.

This improvement will then be reviewed after completion. If additional intersection improvements are needed, a larger full design project will be scheduled.

PROJECT JUSTIFICATION: This project was identified through the Departmental Pipeline Process and the Dover/Kent Metropolitan Planning Organization (Dover/Kent MPO).



County:	Kent
Municipality:	
Funding Program	Road System-Arterials
Functional Category:	Management
Representative District:	29
Senatorial District:	15



SR 15, MOORTON ROAD AND K152, LYNNBURY WOODS ROAD, INTERSECTION AND RAIL CROSSING IMPROVEMENTS (CONTINUED)**PROJECT FUNDING INFORMATION**

Project	Funding Type	Original Estimate	Current Estimate	Authorization	Committed as of 12/31/04	Expended as of 12/31/04	Committed Unexpended as of 12/31/04	Authorization Available
SR 15, Moorton Road and K152, Lynnbury Woods Road, Intersection and Rail Crossing Improvements		\$ 100.0						
Prior Years	State			\$ 0.0	\$ 0.0	\$ 0.0	\$ 0.0	\$ 0.0
	Federal			\$ 0.0	\$ 0.0	\$ 0.0	\$ 0.0	\$ 0.0
	Other			\$ 0.0	\$ 0.0	\$ 0.0	\$ 0.0	\$ 0.0
FY 2005	State		\$ 500.0	\$ 0.0	\$ 0.0	\$ 0.0	\$ 0.0	\$ 0.0
	Federal			\$ 0.0	\$ 0.0	\$ 0.0	\$ 0.0	\$ 0.0
	Other			\$ 0.0	\$ 0.0	\$ 0.0	\$ 0.0	\$ 0.0
FY 2006 Request	State			\$ 500.0				\$ 500.0
	Federal			\$ 0.0				\$ 0.0
	Other			\$ 0.0				\$ 0.0
FY 2007 Projected	State			\$ 0.0				\$ 500.0
	Federal			\$ 0.0				\$ 0.0
	Other			\$ 0.0				\$ 0.0
FY 2008 Projected	State			\$ 0.0				\$ 500.0
	Federal			\$ 0.0				\$ 0.0
	Other			\$ 0.0				\$ 0.0
FY 2009-2011 Projected	State			\$ 0.0				\$ 500.0
	Federal			\$ 0.0				\$ 0.0
	Other			\$ 0.0				\$ 0.0
Total Projected	State			\$ 500.0	\$ 0.0			\$ 500.0
	Federal			\$ 0.0	\$ 0.0			\$ 0.0
	Other			\$ 0.0	\$ 0.0			\$ 0.0
Total All Funds		\$ 100.0	\$ 500.0	\$ 500.0	\$ 0.0	\$ 0.0	\$ 0.0	\$ 500.0

SR 15, MOORTON ROAD AND K152, LYNNBURY WOODS ROAD, INTERSECTION AND RAIL CROSSING IMPROVEMENTS (CONTINUED)**PROJECT TIMELINE INFORMATION**

Project #	Description	Phase	Funding Schedule	Current Estimate	Prior Years	FY 2005	FY 2006	FY 2007	FY 2008	FY 2009 -2011
	SR 15, Moorton Road and K152, Lynnbury Woods Road, Intersection and Rail Crossing Improvements	PD	100% ST	\$ 500.0	\$ 0.0	\$ 0.0	\$ 500.0	\$ 0.0	\$ 0.0	\$ 0.0
	Total All Funds			\$ 500.0	\$ 0.0	\$ 0.0	\$ 500.0	\$ 0.0	\$ 0.0	\$ 0.0

US 13 AND SR 15, CANTERBURY ROAD, MEDIAN CLOSURE AND LIGHTING IMPROVEMENTS, VIOLA [ID No.04-00672]

PROJECT SCOPE/DESCRIPTION: This project includes improvements to some of the turning movements at this intersection particularly the southeast bound movement onto SR 15, Canterbury Road from southbound US 13, as well as the northwest bound movement on SR 15, Canterbury Road from northbound US 13. This improvement does not include signalization or elimination of these movements. The improvements will consist of some movement restrictions and closure of unnecessary and confusing movements at this and other median openings in the immediate vicinity. This project will also include the addition of street lighting at this intersection.

PROJECT JUSTIFICATION: Safety issues at this intersection include the unusual skew of SR 15, Canterbury Road crossing US 13. This project would improve safety as well as alleviate the confusion of motorists with the elimination of some unnecessary and unclear movements at the median openings.



County:	Kent
Municipality:	
Funding Program:	Road System – Arterials
Functional Category:	Management
Representative District:	33, 34
Senatorial District:	15



US 13 AND SR 15, CANTERBURY ROAD, MEDIAN CLOSURE AND LIGHTING IMPROVEMENTS, VIOLA (CONTINUED)

US 13 and SR 15, Canterbury Road, at Canterbury Looking West



***US 13 and SR 15, Canterbury Road,
at Canterbury Looking North***



US 13 AND SR 15, CANTERBURY ROAD, MEDIAN CLOSURE AND LIGHTING IMPROVEMENTS, VIOLA (CONTINUED)**PROJECT FUNDING INFORMATION**

Project	Funding Type	Original Estimate	Current Estimate	Authorization	Committed as of 12/31/04	Expended as of 12/31/04	Committed Unexpended as of 12/31/04	Authorization Available
US 13 and SR 15, Canterbury Road, Median Closure and Lighting Improvements, Viola		\$ 100.0						
Prior Years	State			\$ 100.0	\$ 100.0	\$ 0.0	\$ 100.0	\$ 0.0
	Federal			\$ 0.0	\$ 0.0	\$ 0.0	\$ 0.0	\$ 0.0
	Other			\$ 0.0	\$ 0.0	\$ 0.0	\$ 0.0	\$ 0.0
FY 2005	State		\$ 100.0	\$ 0.0	\$ 0.0	\$ 0.0	\$ 0.0	\$ 0.0
	Federal			\$ 0.0	\$ 0.0	\$ 0.0	\$ 0.0	\$ 0.0
	Other			\$ 0.0	\$ 0.0	\$ 0.0	\$ 0.0	\$ 0.0
FY 2006 Request	State							
	Federal							
	Other							
FY 2007 Projected	State							
	Federal							
	Other							
FY 2008 Projected	State							
	Federal							
	Other							
FY 2009-2011 Projected	State							
	Federal							
	Other							
Total Projected	State			\$ 100.0	\$ 100.0			\$ 0.0
	Federal			\$ 0.0	\$ 0.0			\$ 0.0
	Other			\$ 0.0	\$ 0.0			\$ 0.0
Total All Funds		\$ 100.0	\$ 100.0	\$ 100.0	\$ 100.0	\$ 0.0	\$ 100.0	\$ 0.0

US 13 AND SR 15, CANTERBURY ROAD, MEDIAN CLOSURE AND LIGHTING IMPROVEMENTS, VIOLA (CONTINUED)**PROJECT TIMELINE INFORMATION**

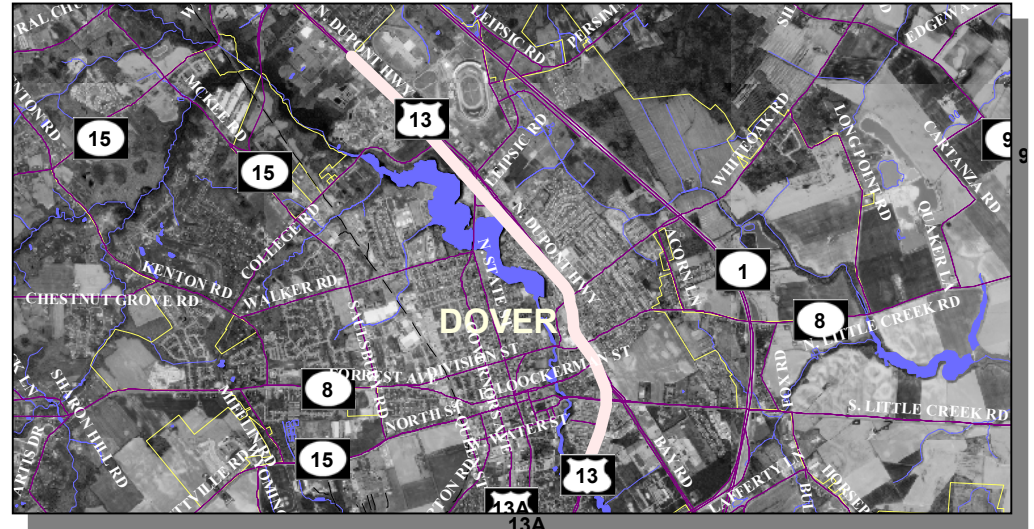
Project #	Description	Phase	Funding Schedule	Current Estimate	Prior Years	FY 2005	FY 2006	FY 2007	FY 2008	FY 2009 -2011
	US 13 and SR 15, Canterbury Road, Median Closure and Lighting Improvements, Viola	C	100% ST	\$ 100.0	\$ 100.0	\$ 0.0	\$ 0.0	\$ 0.0	\$ 0.0	\$ 0.0
	Total All Funds			\$ 100.0	\$ 100.0	\$ 0.0	\$ 0.0	\$ 0.0	\$ 0.0	\$ 0.0

US 13, DOVER CURBING, GUTTER, AND LANDSCAPING [ID No. 04-00673]

PROJECT SCOPE/DESCRIPTION: This project will consist of US 13 curbing, guttering and landscaping in the City of Dover area. The work will be completed by the department's maintenance unit in FY 2005.

PROJECT JUSTIFICATION: This project will improve the safety and aesthetics along this corridor.

County:	Kent
Municipality:	Dover
Funding Program:	Road System – Arterials
Functional Category:	Management
Representative District:	28, 29, 31, 32
Senatorial District:	14, 15, 16, 17



US 13, DOVER CURBING, GUTTER, AND LANDSCAPING (CONTINUED)

US 13 and Roosevelt Avenue Intersection Looking North



US 13 and Lowes Intersection Looking North

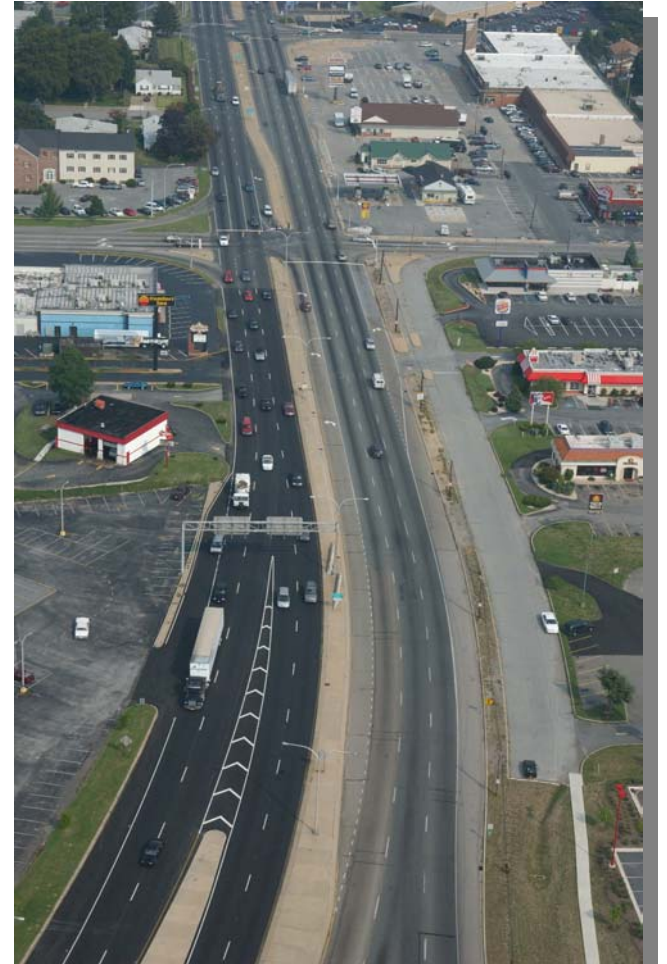


US 13, DOVER CURBING, GUTTER, AND LANDSCAPING (CONTINUED)

US 13 Looking North From Delaware State University



US 13 Looking North Towards Loockerman Street



US 13, DOVER CURBING, GUTTER, AND LANDSCAPING (CONTINUED)**PROJECT FUNDING INFORMATION**

Project	Funding Type	Original Estimate	Current Estimate	Authorization	Committed as of 12/31/04	Expended as of 12/31/04	Committed Unexpended as of 12/31/04	Authorization Available
US 13, Dover Curbing, Gutter, and Landscaping		\$ 100.0						
Prior Years	State			\$ 0.0	\$ 0.0	\$ 0.0	\$ 0.0	\$ 0.0
	Federal			\$ 0.0	\$ 0.0	\$ 0.0	\$ 0.0	\$ 0.0
	Other			\$ 0.0	\$ 0.0	\$ 0.0	\$ 0.0	\$ 0.0
FY 2005	State		\$ 100.0	\$ 100.0	\$ 100.0	\$ 0.0	\$ 100.0	\$ 0.0
	Federal			\$ 0.0	\$ 0.0	\$ 0.0	\$ 0.0	\$ 0.0
	Other			\$ 0.0	\$ 0.0	\$ 0.0	\$ 0.0	\$ 0.0
FY 2006 Request	State							
	Federal							
	Other							
FY 2007 Projected	State							
	Federal							
	Other							
FY 2008 Projected	State							
	Federal							
	Other							
FY 2009-2011 Projected	State							
	Federal							
	Other							
Total Projected	State			\$ 100.0	\$ 100.0			\$ 0.0
	Federal			\$ 0.0	\$ 0.0			\$ 0.0
	Other			\$ 0.0	\$ 0.0			\$ 0.0
Total All Funds		\$ 100.0	\$ 100.0	\$ 100.0	\$ 100.0	\$ 0.0	\$ 100.0	\$ 0.0

US 13, DOVER CURBING, GUTTER, AND LANDSCAPING (CONTINUED)**PROJECT TIMELINE INFORMATION**

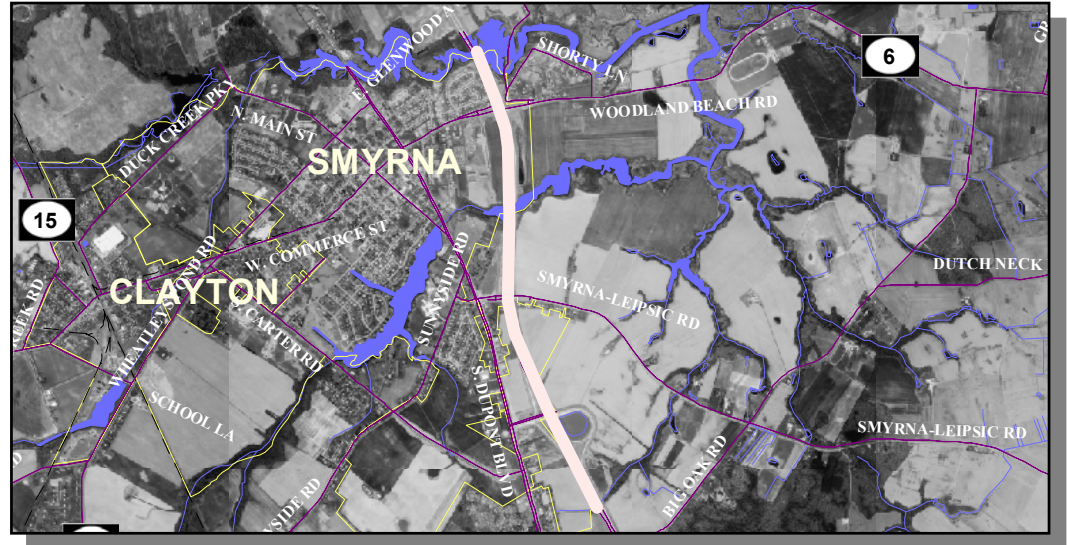
Project #	Description	Phase	Funding Schedule	Current Estimate	Prior Years	FY 2005	FY 2006	FY 2007	FY 2008	FY 2009 -2011
	US 13, Dover Curbing, Gutter, and Landscaping	C	100% ST	\$ 100.0	\$ 0.0	\$ 100.0	\$ 0.0	\$ 0.0	\$ 0.0	\$ 0.0
	Total All Funds			\$ 100.0	\$ 0.0	\$ 100.0	\$ 0.0	\$ 0.0	\$ 0.0	\$ 0.0

US 13, SOUTH OF SMYRNA TO NORTH OF SMYRNA, CURBING, GUTTER, AND LANDSCAPING [ID No. 04-00612]

PROJECT SCOPE/DESCRIPTION: This project will consist of US 13 curbing, guttering, and landscaping in the Town of Smyrna area (near south and north Smyrna SR 1 ramps). The work will be completed by the department's maintenance unit in FY 2005.

PROJECT JUSTIFICATION: This project will improve the safety and aesthetics along this corridor.

County:	Kent
Municipality:	Smyrna
Funding Program:	Road System – Arterials
Functional Category:	Management
Representative District:	28
Senatorial District:	14, 15



US 13 Looking North, South of Smyrna



US 13, SOUTH OF SMYRNA TO NORTH OF SMYRNA, CURBING, GUTTER, AND LANDSCAPING (CONTINUED)

US 13 South of Smyrna Looking Into Town



US 13 Looking North in Town of Smyrna



US 13, SOUTH OF SMYRNA TO NORTH OF SMYRNA, CURBING, GUTTER, AND LANDSCAPING (CONTINUED)**PROJECT FUNDING INFORMATION**

Project	Funding Type	Original Estimate	Current Estimate	Authorization	Committed as of 12/31/04	Expended as of 12/31/04	Committed Unexpended as of 12/31/04	Authorization Available
US 13, South of Smyrna to North of Smyrna, Curbing, Gutter, and Landscaping		\$ 100.0						
Prior Years	State			\$ 100.0	\$ 100.0	\$ 0.0	\$ 100.0	\$ 0.0
	Federal			\$ 0.0	\$ 0.0	\$ 0.0	\$ 0.0	\$ 0.0
	Other			\$ 0.0	\$ 0.0	\$ 0.0	\$ 0.0	\$ 0.0
FY 2005	State		\$ 100.0	\$ 0.0	\$ 0.0	\$ 0.0	\$ 0.0	\$ 0.0
	Federal			\$ 0.0	\$ 0.0	\$ 0.0	\$ 0.0	\$ 0.0
	Other			\$ 0.0	\$ 0.0	\$ 0.0	\$ 0.0	\$ 0.0
FY 2006 Request	State							
	Federal							
	Other							
FY 2007 Projected	State							
	Federal							
	Other							
FY 2008 Projected	State							
	Federal							
	Other							
FY 2009-2011 Projected	State							
	Federal							
	Other							
Total Projected	State			\$ 100.0	\$ 100.0			\$ 0.0
	Federal			\$ 0.0	\$ 0.0			\$ 0.0
	Other			\$ 0.0	\$ 0.0			\$ 0.0
Total All Funds		\$ 100.0	\$ 100.0	\$ 100.0	\$ 100.0	\$ 0.0	\$ 100.0	\$ 0.0

US 13, SOUTH OF SMYRNA TO NORTH OF SMYRNA, CURBING, GUTTER, AND LANDSCAPING (CONTINUED)**PROJECT TIMELINE INFORMATION**

Project #	Description	Phase	Funding Schedule	Current Estimate	Prior Years	FY 2005	FY 2006	FY 2007	FY 2008	FY 2009 -2011
	US 13, South of Smyrna to North of Smyrna, Curbing, Gutter, and Landscaping	C	100% ST	\$ 100.0	\$ 100.0	\$ 0.0	\$ 0.0	\$ 0.0	\$ 0.0	\$ 0.0
	Total All Funds			\$ 100.0	\$ 100.0	\$ 0.0	\$ 0.0	\$ 0.0	\$ 0.0	\$ 0.0

US 13A, SOUTH GOVERNOR'S AVENUE, WEBB'S LANE TO WATER STREET [Project No. 20-045-02]

PROJECT SCOPE/DESCRIPTION: A recent study recommended the need to address the deficiencies of the existing roadway and to provide a consistent roadway section throughout the corridor. The recommendations were presented at a public workshop in October 2002. The recommendations identified the need for the typical roadway section to include a 14-foot two-way center turn lane, a five-foot shoulder in each direction, curbing on both sides of the road, a three-foot grass buffer on each side of the road, a five-foot sidewalk on each side of the road and drainage improvements. At some locations an aesthetic median is proposed rather than the center-turn lane. Total pavement reconstruction is proposed.

PROJECT JUSTIFICATION: The recommendations of the study focused on improving safety, drainage, signalization and promoting various modes of transportation.



County:	Kent
Municipality:	Dover
Funding Program:	Road System – Arterials
Functional Category:	Management
Representative District:	31, 32
Senatorial District:	17



Governor's Avenue Aerial View



South Governors Avenue Planning Study

Water Street to Webb's Lane
Dover, Delaware

Artist's Renderings

Existing Conditions

An artist's rendering of a two-lane asphalt road with a single yellow center line. The road is flanked by green grass and trees. In the distance, there are some buildings and utility poles. The sky is clear and blue.

Recommended Alternative

An artist's rendering of a two-lane asphalt road with double yellow center lines and white crosswalk markings. The road is flanked by green grass and trees. In the distance, there are some buildings and utility poles. The sky is clear and blue.

Delaware Department of Transportation

NTA
McComick, Taylor & Associates, Inc.

US 13A, SOUTH GOVERNOR'S AVENUE, WEBB'S LANE TO WATER STREET (CONTINUED)**PROJECT FUNDING INFORMATION**

Project	Funding Type	Original Estimate	Current Estimate	Authorization	Committed as of 12/31/04	Expended as of 12/31/04	Committed Unexpended as of 12/31/04	Authorization Available
US 13A, South Governor's Avenue, Webb's Lane to Water Street		\$ 17,403.8						
Prior Years	State			\$ 1,162.0	\$ 1,130.8	\$ 582.8	\$ 548.0	\$ 31.2
	Federal			\$ 2,947.5	\$ 2,878.0	\$ 841.0	\$ 2,037.0	\$ 69.5
	Other			\$ 0.0	\$ 0.0	\$ 0.0	\$ 0.0	\$ 0.0
FY 2005	State		\$ 6,334.5	\$ 0.0	\$ 0.0	\$ 0.0	\$ 0.0	\$ 31.2
	Federal			\$ 0.0	\$ 0.0	\$ 0.0	\$ 0.0	\$ 69.5
	Other			\$ 0.0	\$ 0.0	\$ 0.0	\$ 0.0	\$ 0.0
FY 2006 Request	State			\$ 445.0				\$ 476.2
	Federal			\$ 1,780.0				\$ 1,849.5
	Other			\$ 0.0				\$ 0.0
FY 2007 Projected	State							
	Federal							
	Other							
FY 2008 Projected	State							
	Federal							
	Other							
FY 2009-2011 Projected	State							
	Federal							
	Other							
Total Projected	State			\$ 1,607.0	\$ 1,130.8			\$ 476.2
	Federal			\$ 4,727.5	\$ 2,878.0			\$ 1,849.5
	Other			\$ 0.0	\$ 0.0			\$ 0.0
Total All Funds		\$ 17,403.8	\$ 6,334.5	\$ 6,334.5	\$ 4,008.8	\$ 1,423.8	\$ 2,585.0	\$ 2,325.7

US 13A, SOUTH GOVERNOR'S AVENUE, WEBB'S LANE TO WATER STREET (CONTINUED)**PROJECT TIMELINE INFORMATION**

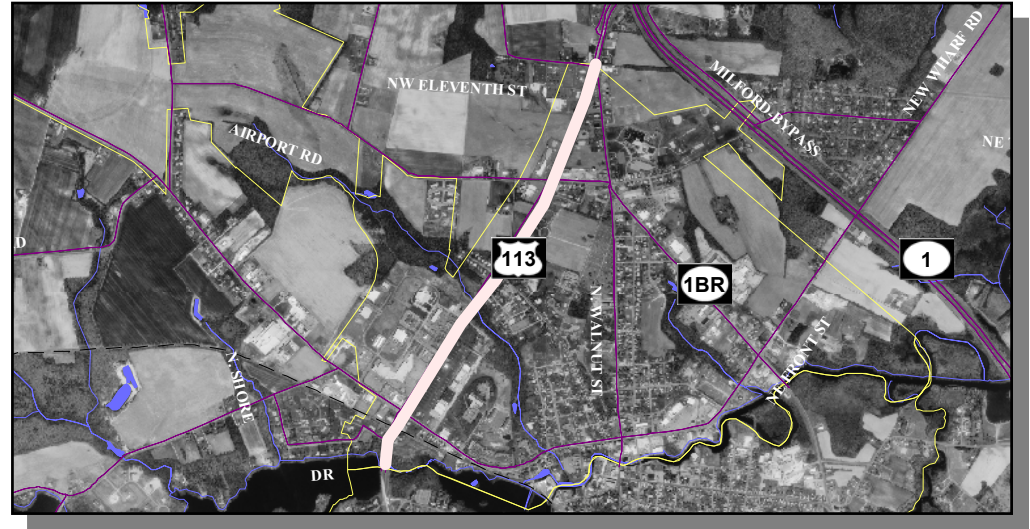
Project #	Description	Phase	Funding Schedule	Current Estimate	Prior Years	FY 2005	FY 2006	FY 2007	FY 2008	FY 2009 -2011
20-045-02	US 13 A, South Governor's Avenue, Webb's Lane to Water Street	PE	80% FHWA	\$ 2,161.9	\$ 2,161.9	\$ 0.0	\$ 0.0	\$ 0.0	\$ 0.0	\$ 0.0
		RW	80% FHWA	1,522.5	1,522.5	0.0	0.0	0.0	0.0	0.0
		C	80% FHWA	2,225.0	0.0	0.0	2,225.0	0.0	0.0	0.0
		PD	80% ST	425.1	425.1	0.0	0.0	0.0	0.0	0.0
	Total All Funds			\$ 6,334.5	\$ 4,109.5	\$ 0.0	\$ 2,225.0	\$ 0.0	\$ 0.0	\$ 0.0

US113, MILFORD CURBING, GUTTER, AND LANDSCAPING [ID No. 04-00613]

PROJECT SCOPE/DESCRIPTION: This project will consist of US113 curbing, guttering and landscaping in the Milford area. The work will be completed by the department's maintenance unit in FY 2006.

PROJECT JUSTIFICATION: This project will improve the safety and aesthetics along this corridor.

County:	Kent
Municipality:	Milford
Funding Program:	Road System – Arterials
Functional Category:	Management
Representative District:	33, 36
Senatorial District:	16, 18



US113, MILFORD CURBING, GUTTER, AND LANDSCAPING (CONTINUED)**PROJECT FUNDING INFORMATION**

Project	Funding Type	Original Estimate	Current Estimate	Authorization	Committed as of 12/31/04	Expended as of 12/31/04	Committed Unexpended as of 12/31/04	Authorization Available
US113, Milford Curbing, Gutter, and Landscaping		\$ 100.0						
Prior Years	State			\$ 0.0	\$ 0.0	\$ 0.0	\$ 0.0	\$ 0.0
	Federal			\$ 0.0	\$ 0.0	\$ 0.0	\$ 0.0	\$ 0.0
	Other			\$ 0.0	\$ 0.0	\$ 0.0	\$ 0.0	\$ 0.0
FY 2005	State		\$ 100.0	\$ 0.0	\$ 0.0	\$ 0.0	\$ 0.0	\$ 0.0
	Federal			\$ 0.0	\$ 0.0	\$ 0.0	\$ 0.0	\$ 0.0
	Other			\$ 0.0	\$ 0.0	\$ 0.0	\$ 0.0	\$ 0.0
FY 2006 Request	State			\$ 100.0				\$ 100.0
	Federal			\$ 0.0				\$ 0.0
	Other			\$ 0.0				\$ 0.0
FY 2007 Projected	State							
	Federal							
	Other							
FY 2008 Projected	State							
	Federal							
	Other							
FY 2009-2011 Projected	State							
	Federal							
	Other							
Total Projected	State			\$ 100.0	\$ 0.0			\$ 100.0
	Federal			\$ 0.0	\$ 0.0			\$ 0.0
	Other			\$ 0.0	\$ 0.0			\$ 0.0
Total All Funds		\$ 100.0	\$ 100.0	\$ 100.0	\$ 0.0	\$ 0.0	\$ 0.0	\$ 100.0

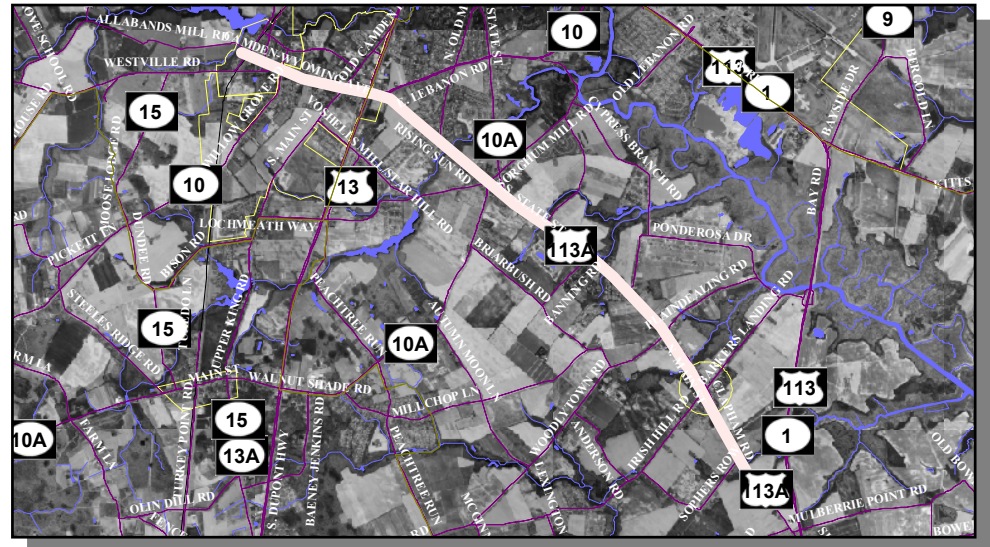
US113, MILFORD CURBING, GUTTER, AND LANDSCAPING (CONTINUED)**PROJECT TIMELINE INFORMATION**

Project #	Description	Phase	Funding Schedule	Current Estimate	Prior Years	FY 2005	FY 2006	FY 2007	FY 2008	FY 2009 -2011
	US113, Milford Curbing, Gutter, and Landscaping	C	100% ST	\$ 100.0	\$ 0.0	\$ 0.0	\$ 100.0	\$ 0.0	\$ 0.0	\$ 0.0
	Total All Funds			\$ 100.0	\$ 0.0	\$ 0.0	\$ 100.0	\$ 0.0	\$ 0.0	\$ 0.0

US113A, SOUTH STATE STREET, LITTLE HEAVEN TO SR 10, LEBANON ROAD [ID No. 04-00607]

PROJECT SCOPE/DESCRIPTION: The project development phase of this project will identify operational (those improvements that can be implemented quickly) and capital improvements (those improvements that need design and right-of-way acquisition). The project development work will commence in FY 2005 and be completed with appropriate recommendations in FY 2006.

PROJECT JUSTIFICATION: The Dover/Kent County Metropolitan Planning Organization (MPO) is in the final stages of a preliminary study and public outreach to identify areas of needed improvement along this busy corridor from Little Heaven to US 13. Expanded development in the area necessitates the need for roadway and operational improvements.



County:	Kent
Municipality:	
Funding Program:	Road System – Arterials
Functional Category:	Management
Representative District:	33, 34
Senatorial District:	16, 17



US113A, SOUTH STATE STREET, LITTLE HEAVEN TO SR 10, LEBANON ROAD (CONTINUED)

Close Up Aerial View of US113A, South State Street



US113A, South State Street Split at Little Heaven



US113A, SOUTH STATE STREET, LITTLE HEAVEN TO SR 10, LEBANON ROAD (CONTINUED)**PROJECT FUNDING INFORMATION**

Project	Funding Type	Original Estimate	Current Estimate	Authorization	Committed as of 12/31/04	Expended as of 12/31/04	Committed Unexpended as of 12/31/04	Authorization Available
US113A, South State Street, Little Heaven to SR 10, Lebanon Road		\$ 1,000.0						
Prior Years	State			\$ 0.0	\$ 0.0	\$ 0.0	\$ 0.0	\$ 0.0
	Federal			\$ 0.0	\$ 0.0	\$ 0.0	\$ 0.0	\$ 0.0
	Other			\$ 0.0	\$ 0.0	\$ 0.0	\$ 0.0	\$ 0.0
FY 2005	State		\$ 1,000.0	\$ 0.0	\$ 0.0	\$ 0.0	\$ 0.0	\$ 0.0
	Federal			\$ 0.0	\$ 0.0	\$ 0.0	\$ 0.0	\$ 0.0
	Other			\$ 0.0	\$ 0.0	\$ 0.0	\$ 0.0	\$ 0.0
FY 2006 Request	State			\$ 500.0				\$ 500.0
	Federal			\$ 0.0				\$ 0.0
	Other			\$ 0.0				\$ 0.0
FY 2007 Projected	State			\$ 500.0				\$ 1,000.0
	Federal			\$ 0.0				\$ 0.0
	Other			\$ 0.0				\$ 0.0
FY 2008 Projected	State			\$ 0.0				\$ 1,000.0
	Federal			\$ 0.0				\$ 0.0
	Other			\$ 0.0				\$ 0.0
FY 2009-2011 Projected	State			\$ 0.0				\$ 1,000.0
	Federal			\$ 0.0				\$ 0.0
	Other			\$ 0.0				\$ 0.0
Total Projected	State			\$ 1,000.0	\$ 0.0			\$ 1,000.0
	Federal			\$ 0.0	\$ 0.0			\$ 0.0
	Other			\$ 0.0	\$ 0.0			\$ 0.0
Total All Funds		\$ 1,000.0	\$ 1,000.0	\$ 1,000.0	\$ 0.0	\$ 0.0	\$ 0.0	\$ 1,000.0

US113A, SOUTH STATE STREET, LITTLE HEAVEN TO SR 10, LEBANON ROAD (CONTINUED)**PROJECT TIMELINE INFORMATION**

Project #	Description	Phase	Funding Schedule	Current Estimate	Prior Years	FY 2005	FY 2006	FY 2007	FY 2008	FY 2009 -2011
	US113A, South State Street, Little Heaven to SR 10, Lebanon Road	PD	100% ST	\$ 500.0	\$ 0.0	\$ 0.0	\$ 500.0	\$ 0.0	\$ 0.0	\$ 0.0
		PE	100% ST	500.0	0.0	0.0	0.0	500.0	0.0	0.0
		C*	80% FHWA	0.0	0.0	0.0	0.0	0.0	0.0	0.0
	Total All Funds			\$ 1,000.0	\$ 0.0	\$ 0.0	\$ 500.0	\$ 500.0	\$ 0.0	\$ 0.0