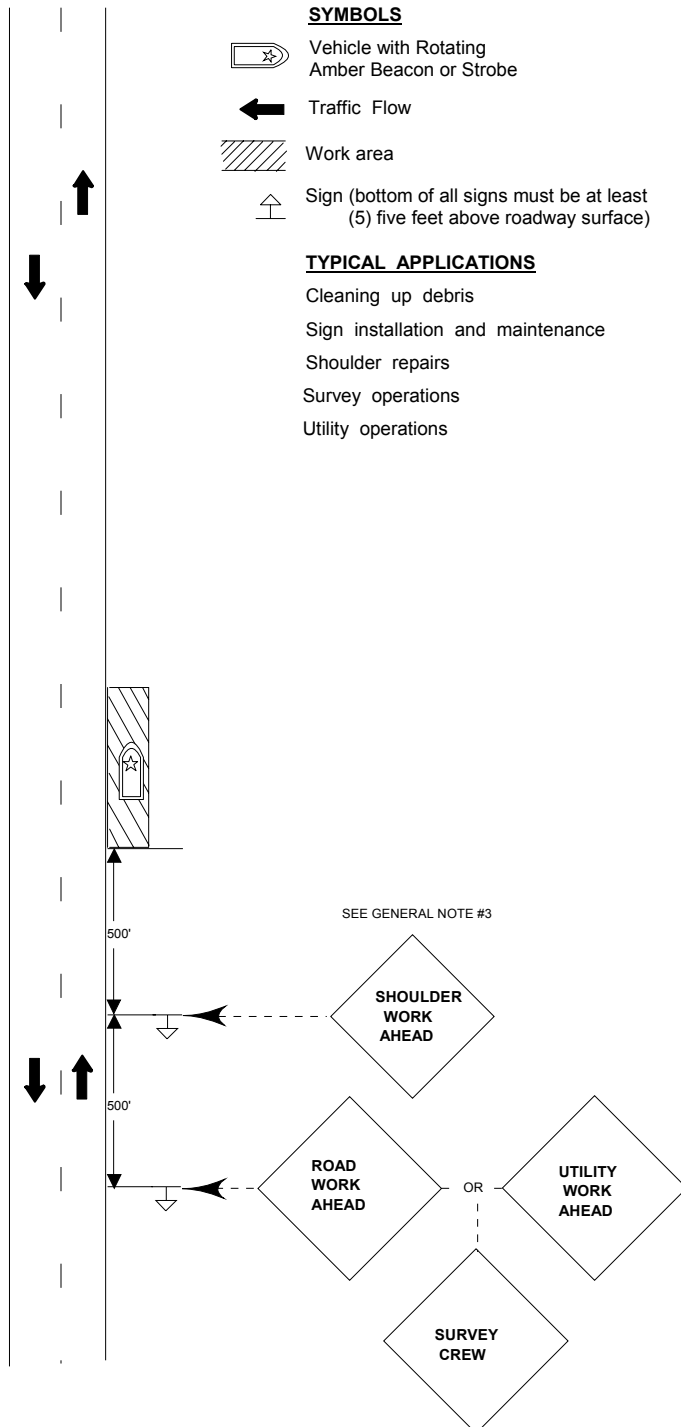


STANDARD DESIGN
TYPICAL APPLICATION OF TRAFFIC CONTROL DEVICES FOR
HIGHWAY CONSTRUCTION, MAINTENANCE AND UTILITY OPERATIONS
CASE 7 - C
TWO-LANE, TWO-WAY OR MULTILANE TRAFFIC
SHORT TIME SHOULDER CLOSURE - DAYTIME ONLY



CASE 7-C

TWO-LANE, TWO-WAY OR MULTILANE TRAFFIC SHORT TIME SHOULDER CLOSURE DAYTIME ONLY

For any operation that is outside the edge of the roadway or pavement for a period of more than twenty (20) minutes, but less than one (1) hour.

General Notes

1. All vehicles, equipment, workers (except flagger) and their activities are restricted at all times to one side of the pavement unless otherwise authorized by the Engineer.
2. Construction and maintenance operations shall be confined to the area outside of the edge of pavement.
3. When workers or vehicles encroach on the travelway, traffic control shall be in conformance with Case 7-B.
4. All signs shall be removed at completion of day's operations.
5. Longitudinal dimensions may be adjusted slightly to fit field conditions.
6. All vehicles in a work area shall display flashing lights installed for the purpose warning approaching drivers of a vehicular traffic hazard requiring unusual care in approaching, overtaking, or passing.
7. This is the minimum requirement for the condition set forth. the Traffic Engineer may require additional traffic control devices as deemed necessary.