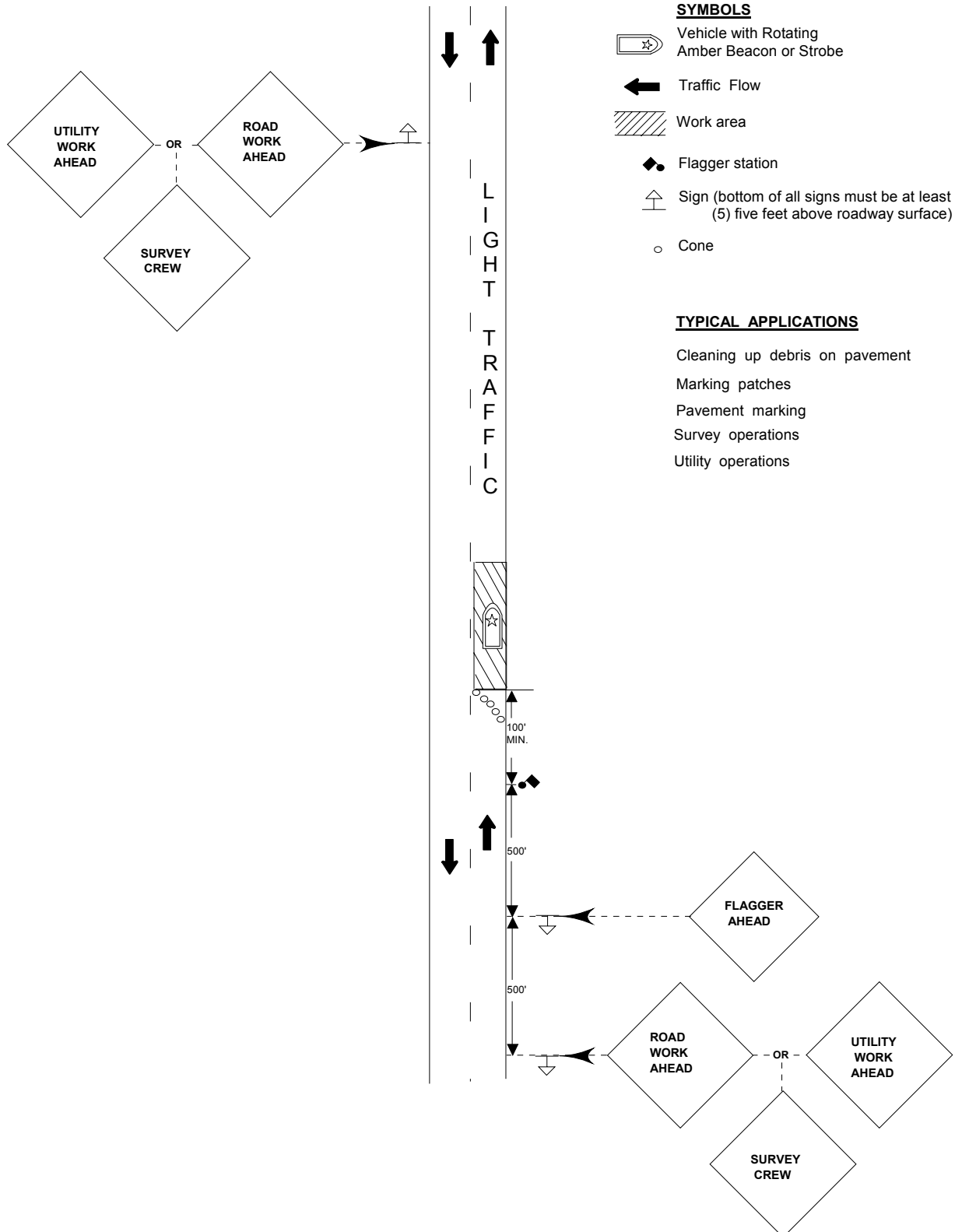


STANDARD DESIGN
TYPICAL APPLICATION OF TRAFFIC CONTROL DEVICES FOR
HIGHWAY CONSTRUCTION, MAINTENANCE AND UTILITY OPERATIONS
CASE 7 - B
TWO-LANE, TWO-WAY TRAFFIC
SHORT TIME LANE CLOSURE, DAYTIME ONLY - LIGHT TRAFFIC



CASE 7-B

TWO-LANE, TWO-WAY TRAFFIC SHORT TIME LANE CLOSURE DAYTIME ONLY - LIGHT TRAFFIC

For any operations that encroaches in the area between the centerline and outside the edge of the roadway or pavement for a period of less than one (1) hour.

General Notes

1. All vehicles, equipment, workers (except flagger) and their activities are restricted at all times to one side of the pavement unless otherwise authorized by the Engineer.
2. Construction and maintenance operations shall be confined to one traffic lane.
3. When it is necessary to stop traffic in both directions, traffic control will be in conformance with Case 7-A.
4. All signs shall be removed at completion of the day's operations.
5. Longitudinal dimensions may be adjusted slightly to fit field conditions.
6. All vehicles in a work area shall display flashing lights installed for the purpose of warning approaching drivers of a vehicular traffic hazard requiring unusual care in approaching, overtaking, or passing.
7. This is the minimum requirement for the condition set forth. The Traffic Engineer may require additional traffic control devices as deemed necessary.