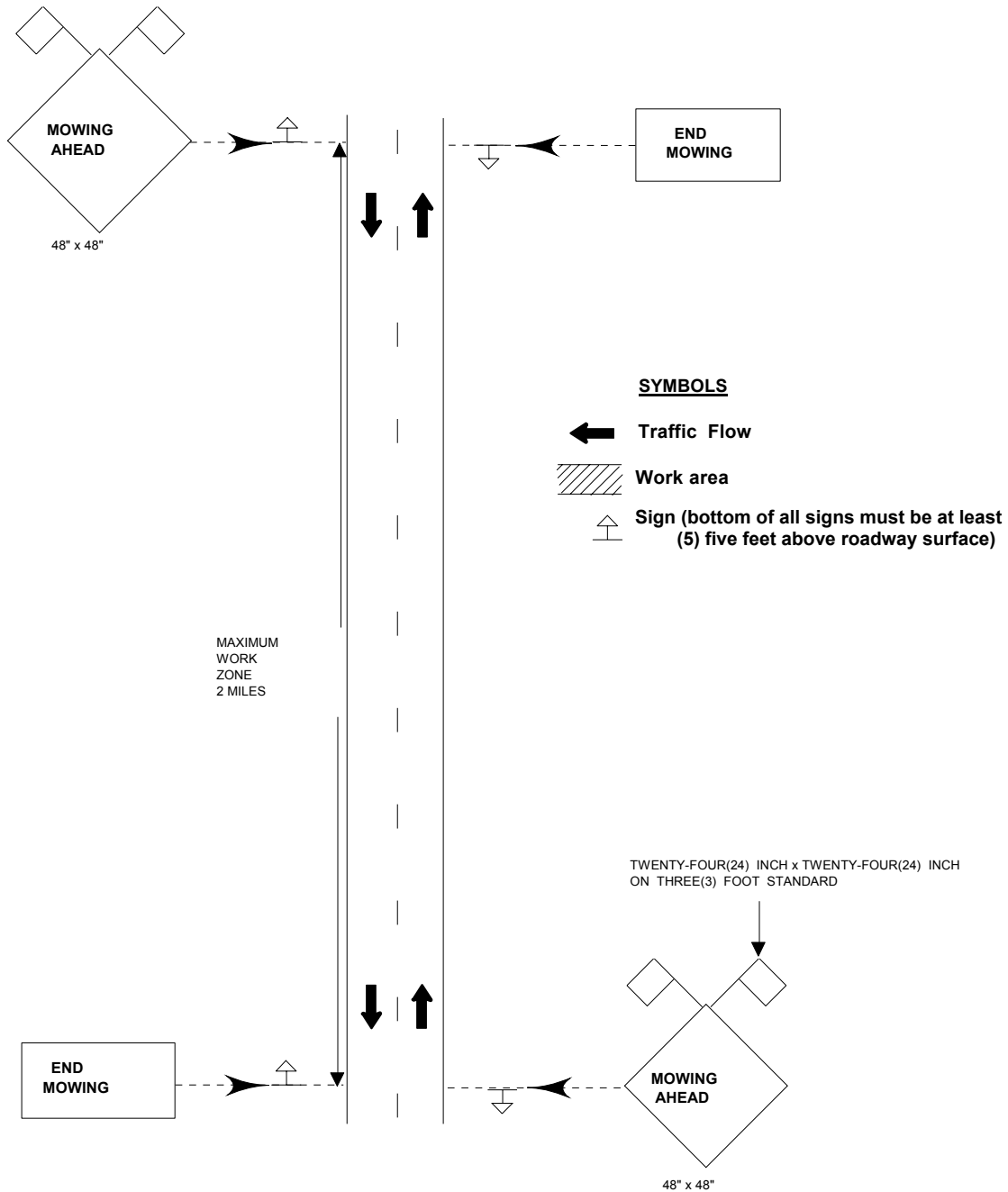


**STANDARD DESIGN**  
**TYPICAL APPLICATION OF TRAFFIC CONTROL DEVICES FOR**  
**HIGHWAY CONSTRUCTION, MAINTENANCE AND UTILITY OPERATIONS**  
**CASE 5-B**  
**TWO-LANE, TWO-WAY TRAFFIC - MOWING DAYTIME OPERATION**



## CASE 5-B

### TWO-LANE TWO-WAY TRAFFIC MOWING DAYTIME OPERATION

Where at any time vehicle, equipment, workers or their activities require an intermittent, or continuous mowing operation on the shoulder or in median.

#### General Notes

1. All vehicles, equipment, workers and their activities are restricted at all times to one side of the pavement unless otherwise authorized by the Traffic Engineer.
2. Minimum distance is 200 feet, maximum distance to be determined by the Traffic Engineer, but in no case to exceed the length of one-half (1/2) day's operation or two (2) miles whichever is less.
3. For divided highways the required advance warning signs shall be posted on both the right and left side of the roadway and all signs for traffic approaching from the opposite direction will be omitted.
4. All signs are to be removed at the completion of the day's operation.
5. All vehicles in a work area shall display flashing lights installed for the purpose of warning approaching drivers of a vehicular traffic hazard requiring unusual care in approaching, overtaking, or passing.
6. Longitudinal dimensions may be adjusted to fit field conditions.
7. This is the minimum requirements for the conditions set forth. The Traffic Engineer may require additional traffic control devices as deemed necessary.