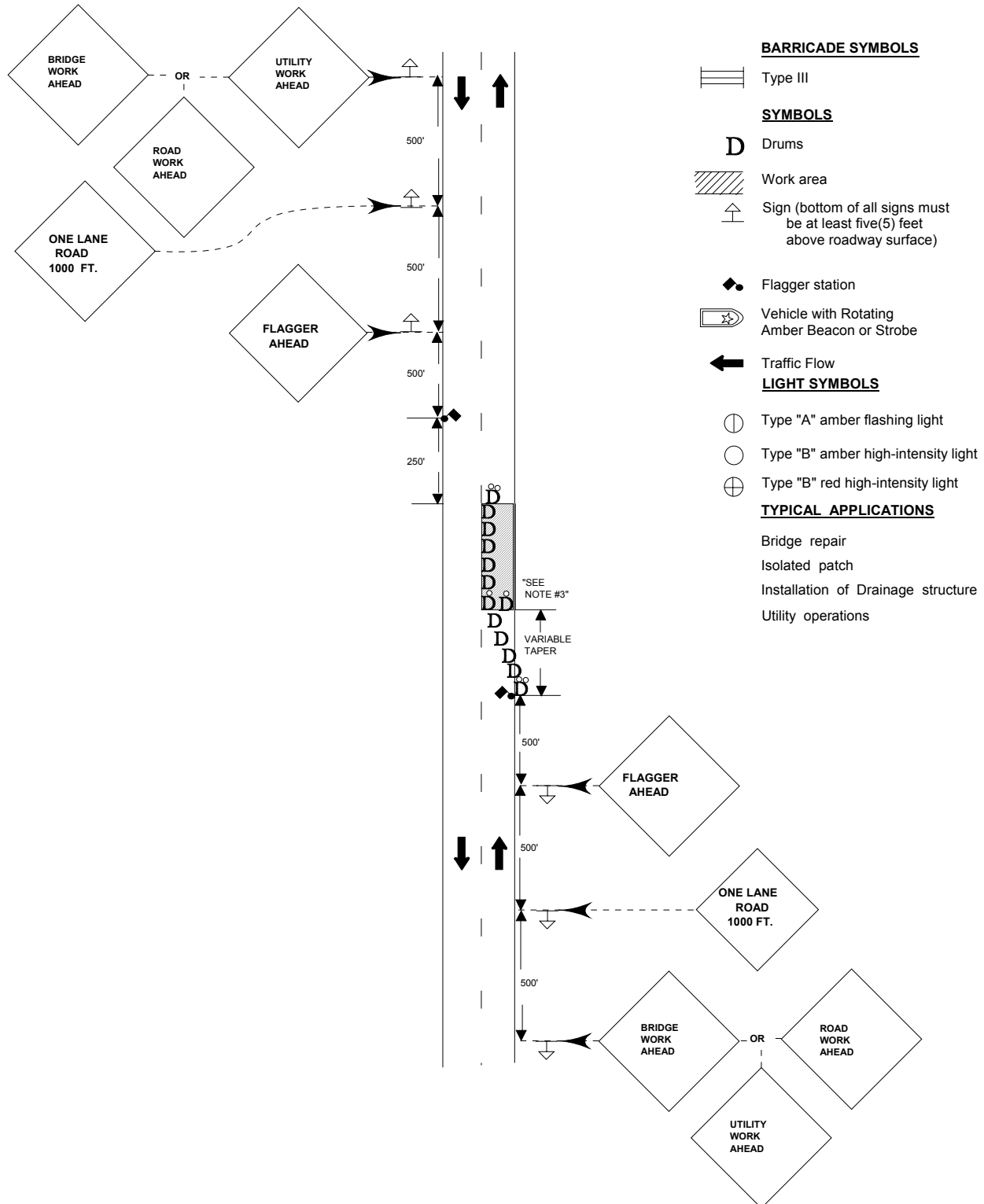


STANDARD DESIGN
TYPICAL APPLICATION OF TRAFFIC CONTROL DEVICES FOR
HIGHWAY CONSTRUCTION, MAINTENANCE AND UTILITY OPERATIONS

CASE 4
TWO-LANE, TWO-WAY TRAFFIC, DAY OR NIGHT
OPERATIONS EXCEEDING ONE DAYLIGHT PERIOD



CASE 4

TWO-LANE, TWO-WAY TRAFFIC, DAY OR NIGHT OPERATIONS OR OPERATIONS EXCEEDING ONE DAYLIGHT PERIOD

General Notes

1. All vehicles, equipment, workers (except FLAGGER) and their activities are restricted at all times to one side of the pavement, unless otherwise authorized by the Traffic Engineer.
2. Construction, maintenance or utility operations shall be confined to one (1) traffic lane, leaving the opposite lane open to traffic. At least 500 feet of both traffic lanes shall be available for traffic movement at intervals not greater than 1,000 feet. A complete traffic control plan must be approved for any project expected to exceed 1,000 feet in length including both taper and work areas.
3. The FLAGGER shall be in sight of each other or in communications at all times.
4. When traffic volumes permit, the FLAGGER AHEAD signs and the FLAGGER will not be required, except as directed by the Traffic Engineer. ONE LANE ROAD 500 FEET signs shall be installed in place of FLAGGER AHEAD signs.
5. At FLAGGER station in closed lane, a "Yield To Opposing Traffic" sign must be erected.
6. Drums shall be equipped with one(1) amber Type "B" flashing lights at the point of hazard. One(1) amber Type "B" flashing lights shall be used on the first drum in the series for delineation. This note does not apply during daylight hours. A minimum of one(1) Amber Type "B" flashing lights shall be used at night on each approach in advance the work area. One (1) amber light shall be installed above each of the first two warning signs in the series.
7. All signs shall be post mounted if closure time exceeds four (4) days, unless otherwise authorized by the Traffic Engineer.
8. When a side road intersects the highway on which work is being performed additional traffic control devices shall be erected as directed by the Traffic Engineer.
9. Longitudinal dimensions may be adjusted slightly to fit field conditions.
10. All vehicles in a work area shall display flashing lights installed for the purpose of warning approaching drivers of a vehicular traffic hazard requiring unusual care in approaching overtaking, or passing.
11. This is the minimum requirement for the condition set forth. The Traffic Engineer may require additional traffic control devices as deemed necessary.