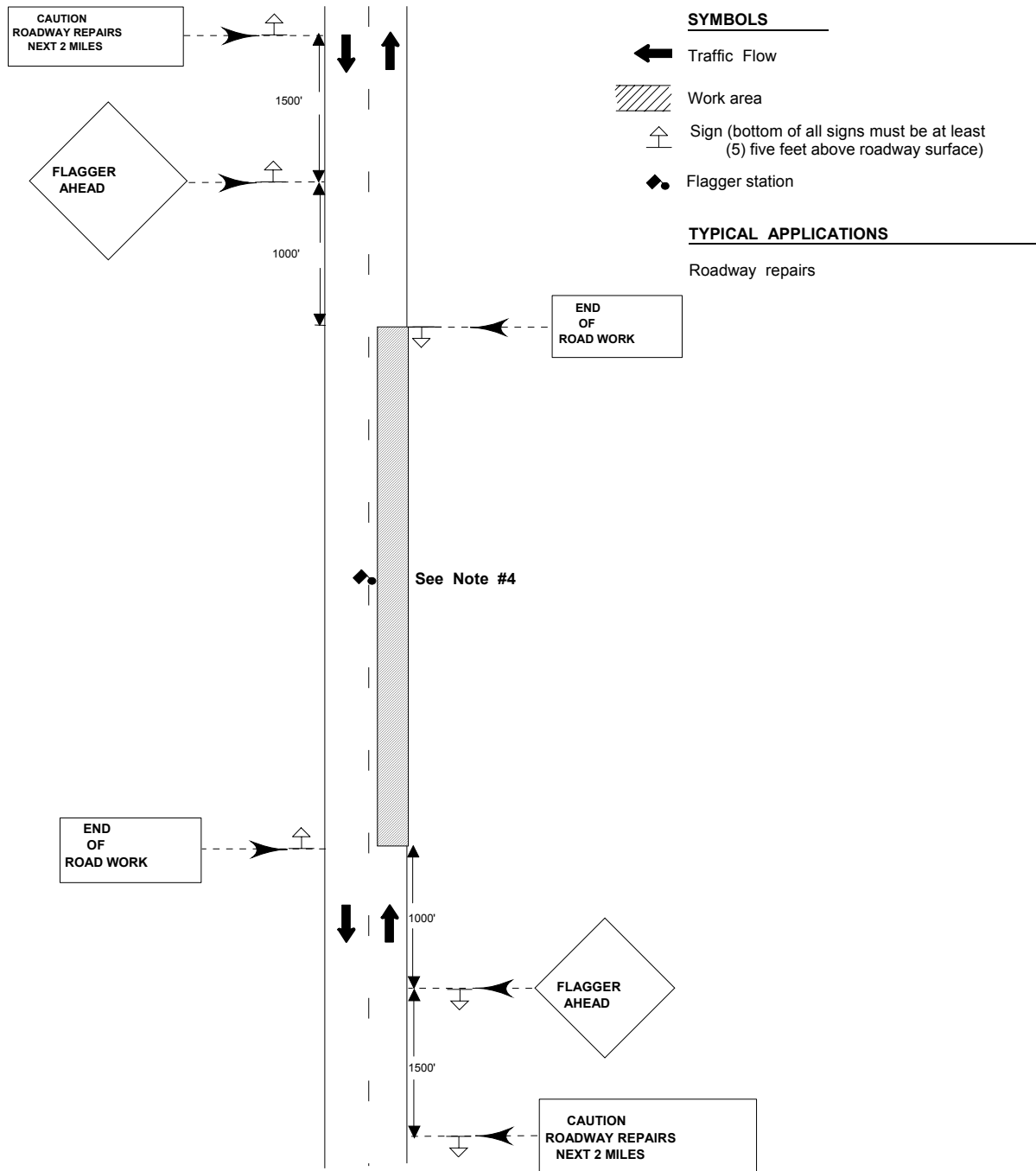


STANDARD DESIGN
TYPICAL APPLICATION OF TRAFFIC CONTROL DEVICES FOR
HIGHWAY CONSTRUCTION, MAINTENANCE AND UTILITY OPERATIONS
CASE 3 - A
TWO-LANE, TWO-WAY, TRAFFIC - MOVING DAYTIME OPERATION



CASE 3-A

TWO-LANE, TWO-WAY TRAFFIC MOVING DAYTIME OPERATION

Where, at anytime, any vehicle, equipment, workers or their activities require an intermittent or continuous moving operation which requires a substantial interference with or the closing of one travel lane.

General Notes

1. 1500 feet prior to start of work area signs 48"x 72" will be placed stating: CAUTION ROADWAY REPAIRS NEXT 2 MILES.
2. 1000 feet prior to start of work area, a sign 48"x 48" will be placed stating: FLAGGER AHEAD.
3. Not less than 200 feet nor more than 500 feet would be a truck with an approved arrow panel which would be set to flash in the "WARNING MODE". This vehicle would follow the pothole patching operation maintaining the distances given above. When moving from one location to another, all vehicles will travel on shoulder whenever possible. During patching operation, the above stated vehicle would be positioned in the lane closed to thru traffic.
4. A FLAGGER will be stationed at or near the work site to move traffic safely and expeditiously through or around the work operation.
5. All personnel working in or near the roadway must wear "orange" vests and protective headgear to identify them as being part of a "construction, maintenance or utility work force". FLAGGER must adhere to the standard FLAGGER procedures.
6. When moving from one location to another, all vehicles will travel on shoulder whenever possible.
7. Workers and equipment are confined to one (1) lane leaving adjacent lane open to traffic unless traffic is stopped by flagging.
8. The work area shall not exceed two (2) miles or one-half (1/2) day's operation, whichever is less.
9. When a side road intersects the highway on which work is being performed, additional traffic control devices are required.
10. All vehicles in a work area shall display flashing lights installed for the purpose of warning approaching drivers of a vehicular traffic hazard requiring unusual care in approaching overtaking, or passing.
11. This is the minimum requirement for the condition set forth. The Traffic Engineer may require additional traffic control devices as deemed necessary.