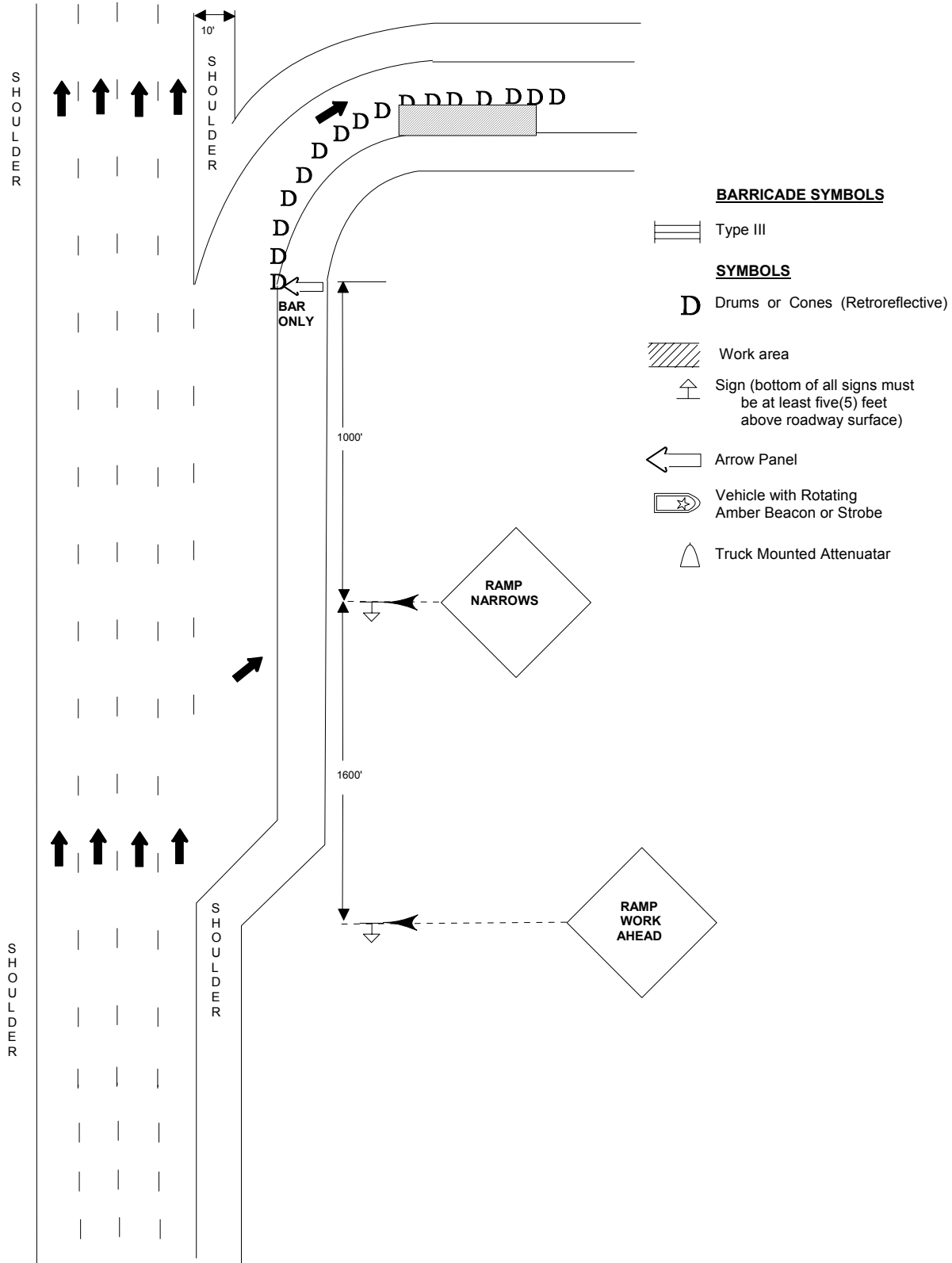


STANDARD DESIGN
TYPICAL APPLICATION OF TRAFFIC CONTROL DEVICES FOR
HIGHWAY CONSTRUCTION, MAINTENANCE AND UTILITY OPERATIONS
CASE 36
MULTI LANE LIMITED CONTROL FOR INTERSTATES AND HIGHWAYS
WORK AREAS ON RAMP - DAYTIME OPERATIONS ONLY



CASE 36

MULTILANE LIMITED CONTROL FOR INTERSTATES AND HIGHWAYS
WORK AREAS ON RAMPS - DAY TIME OPERATIONS ONLY

General Notes

1. All vehicles in a work area shall display flashing lights installed for the purpose of Warning approaching drivers of a vehicular traffic hazard requiring unusual care in approaching, overtaking, or passing.
2. Cones or plastic drums may be used.
3. This is the minimum requirements for the conditions set forth. The traffic engineer may require additional traffic control devices as deemed necessary.