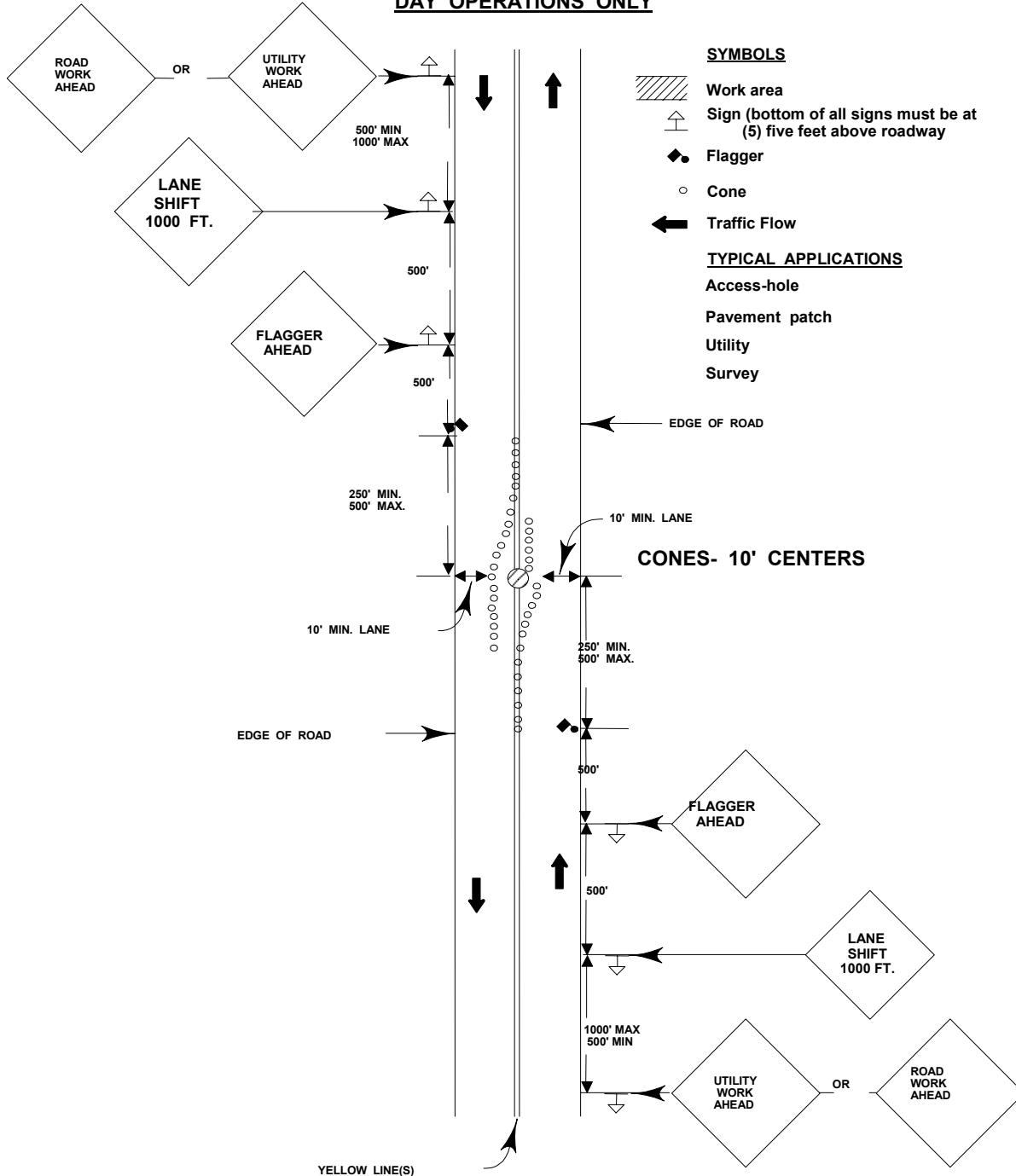


**STANDARD DESIGN
TYPICAL APPLICATION OF TRAFFIC CONTROL DEVICES FOR
HIGHWAY CONSTRUCTION, MAINTENANCE AND UTILITY OPERATIONS
CASE 34**

**TWO-LANE, TWO-WAY TRAFFIC
DAY OPERATIONS ONLY**



CASE 34

TWO-LANE, TWO-WAY or MULTILANE TRAFFIC SHORT TIME OPERATIONS DAY TIME ONLY

General Notes

1. All vehicles in a work area shall display flashing lights installed for the purpose of Warning approaching drivers of a vehicular traffic hazard requiring unusual care in approaching, overtaking, or passing.
2. All signs shall be removed at completion of the days operation.
3. Longitudinal dimensions may be adjusted slightly to fit field conditions.
4. All workers shall wear orange safety jacket.
5. The flagger shall be in sight of each other or in communication at all times.
6. When a side road intersects the highway on which work is being performed, additional traffic control devices shall be erected as directed by the traffic engineer.
7. This is the minimum requirements for the conditions set forth. The traffic engineer may require additional traffic control devices as deemed necessary.