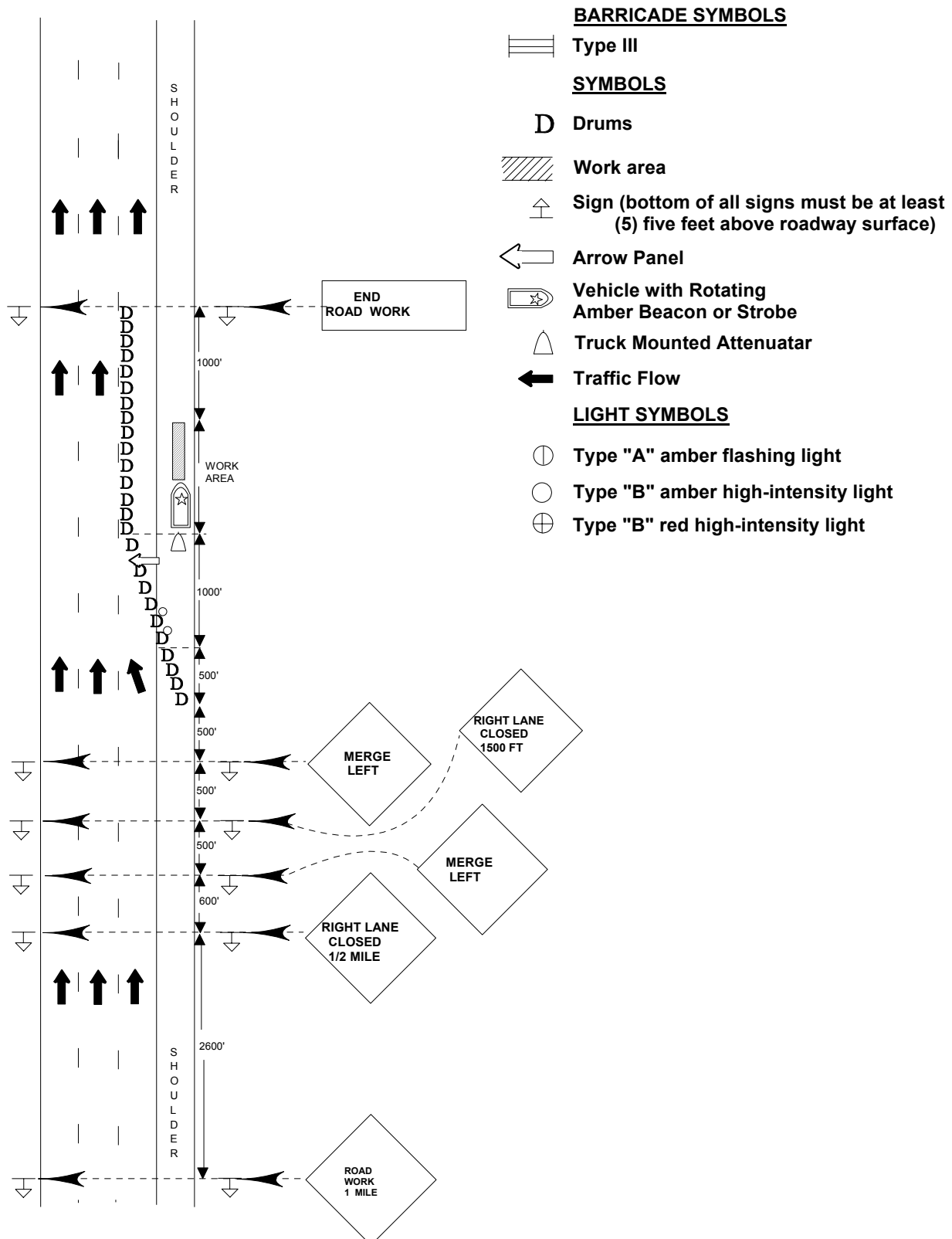


**STANDARD DESIGN
TYPICAL APPLICATION OF TRAFFIC CONTROL DEVICES FOR
HIGHWAY CONSTRUCTION, MAINTENANCE AND UTILITY OPERATIONS
CASE 33A**

**MULTI LANE LIMITED CONTROL FOR INTERSTATES AND HIGHWAYS
SHOULDER WORK - ON SHOULDER**



CASE 33A

MULTILANE LIMITED CONTROL FOR INTERSTATES AND HIGHWAYS
SHOULDER WORK - ON SHOULDER

Where at all times, all vehicles, equipment, workers and their activities are within the shoulder. (Less than 10' feet from edge of travelway).

General Notes

1. This case also applies to work performed in the median less than 10 feet from either pavement.
2. All vehicles in a work area shall display flashing lights, installed for the purpose of warning approaching drivers of a vehicular traffic hazard requiring unusual care in approaching, overtaking or passing.
3. This is the minimum requirement for the condition set forth. The Traffic Engineer may require additional traffic control devices as deemed necessary.
4. Cones may be substituted for plastic drums during daytime operation or for emergency operations of less than 48 hours.
*
5. When the duration of the work is less than two hours, the work area is confined within the protected area of the TMA, and the shoulder has a minimum width of 10 feet.