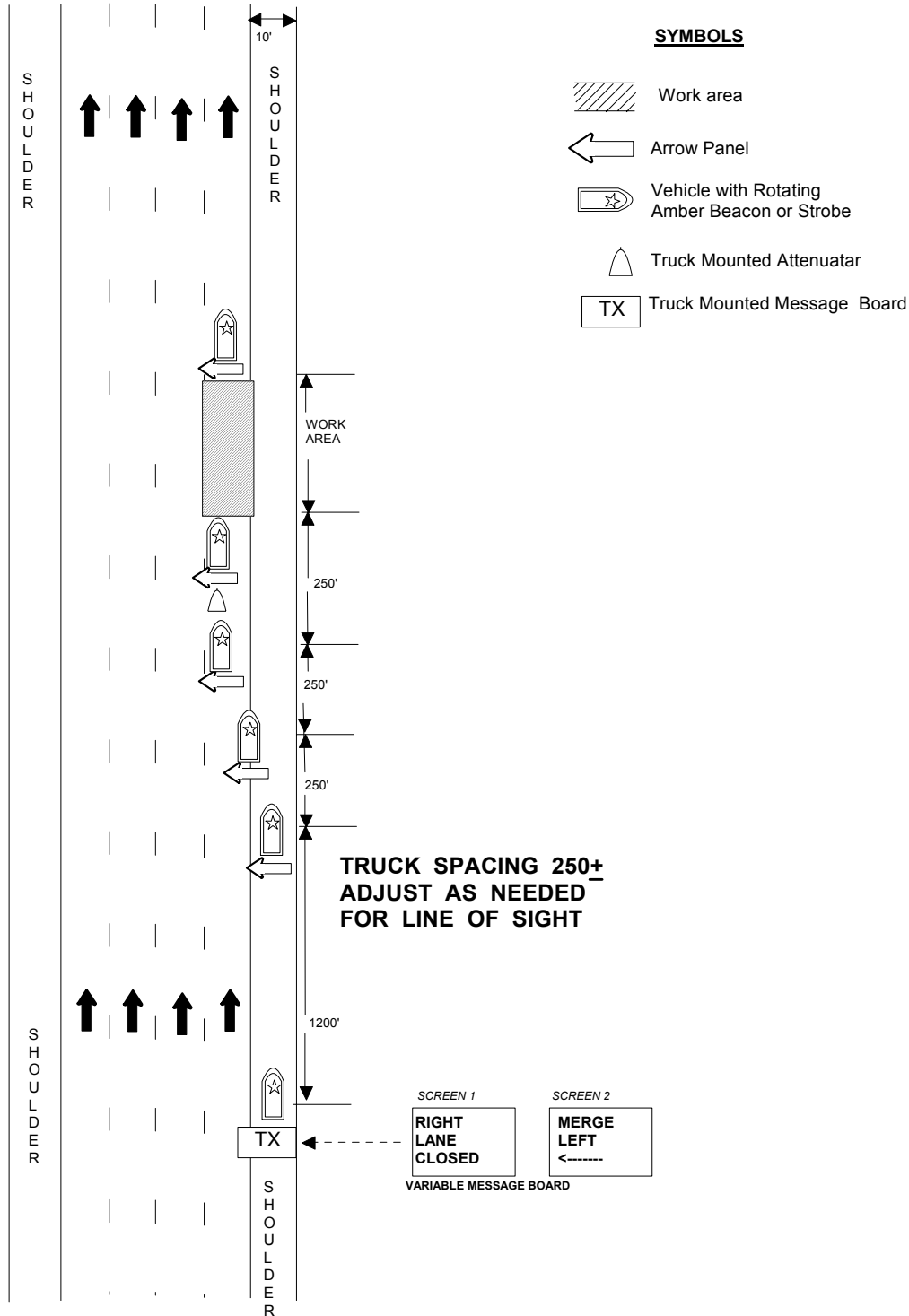


STANDARD DESIGN
TYPICAL APPLICATION OF TRAFFIC CONTROL DEVICES FOR
HIGHWAY CONSTRUCTION, MAINTENANCE AND UTILITY OPERATIONS
CASE 32
MULTI LANE LIMITED CONTROL FOR INTERSTATES AND HIGHWAYS
FOR STOP & GO OR SLOW MOVING DETOURS



CASE 32

MULTILANE LIMITED CONTROL FOR INTERSTATES AND HIGHWAYS - LIGHT TRAFFIC

General Notes

1. All vehicles, equipment, workers (except FLAGGER) and their activities are restricted at all times to one side of the pavement, unless otherwise authorized by the Engineer.
2. Longitudinal dimensions may be adjusted slightly to fit field condition when approved by the Engineer.
3. All vehicles in the work area shall display flashing lights, installed for the purpose of warning approaching drivers of a vehicular traffic hazard requiring unusual care in approaching, overtaking or passing.
4. Truck mounted attenuators (T.M.A.) shall be used before work area, unless otherwise authorized by the Engineer.
5. This is the minimum requirement for the condition set forth. The Traffic Engineer may require additional traffic control devices as deemed necessary.