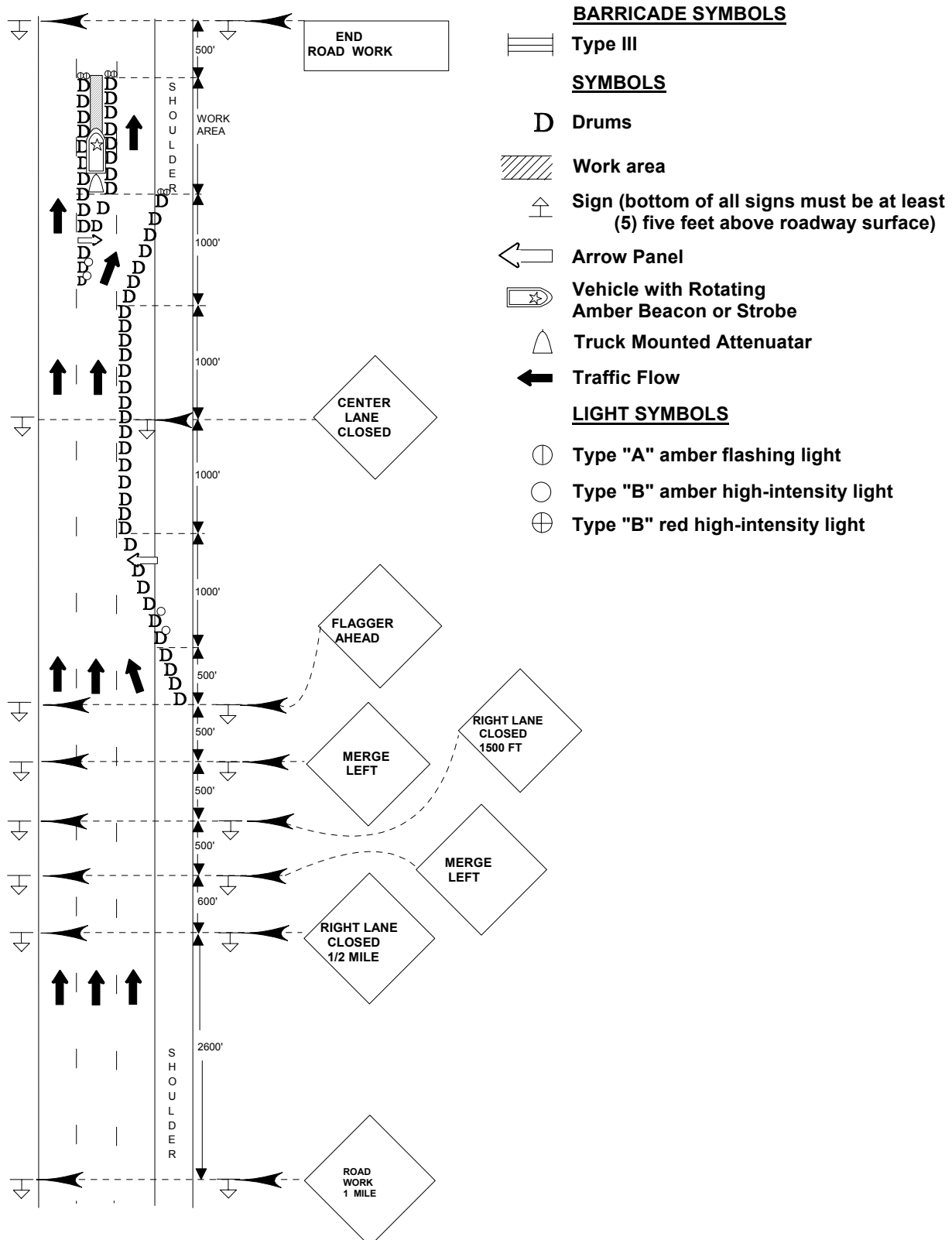


STANDARD DESIGN
TYPICAL APPLICATION OF TRAFFIC CONTROL DEVICES FOR
HIGHWAY CONSTRUCTION, MAINTENANCE AND UTILITY OPERATIONS
CASE 25
MULTI LANE LIMITED CONTROL FOR INTERSTATES AND HIGHWAYS
- HEAVY TRAFFIC



CASE 25

MULTILANE LIMITED CONTROL FOR INTERSTATES AND HIGHWAYS - HEAVY TRAFFIC

General Notes

1. All vehicles, equipment, workers (except FLAGGER) and their activities are restricted at all times to one side of the pavement, unless otherwise authorized by the Engineer.
2. The "L" distance is 1,000 feet.
3. All construction signs that are up over night shall have one (1) "B" amber warning light. Two (2) flags may be mounted on each sign if authorized by the Engineer. Flags shall be a 24" x 24" minimum on a 3 foot standard.
4. The FLAGGER shall use a stop/slow paddle.
5. Cones may be substituted for plastic drums during daytime operation.
6. Drums used on taper shall be placed at approximate right angles to the traffic flow and not more than 25 feet intervals for the first eight (8) Drums and not more than 50 feet intervals for all required.
7. Longitudinal dimensions may be adjusted slightly to fit field condition when approved by the Engineer.
8. When ramp or side roads intersect the highway on which work is being performed, additional traffic control devices shall be erected as directed by the Engineer.
9. All vehicles in the work area shall display flashing lights, installed for the purpose of warning approaching drivers of a vehicular traffic hazard requiring unusual care in approaching, overtaking or passing.
10. Truck mounted attenuators (T.M.A.) shall be used before work area, unless otherwise authorized by the Engineer.
11. Drums shall be equipped with one (1) amber type "B" flashing lights at the point of hazard. One(1) amber type "B" flashing lights shall be used on the first two(2) Drums in the series for delineation.
12. This is the minimum requirement for the condition set forth. The Traffic Engineer may require additional traffic control devices as deemed necessary.