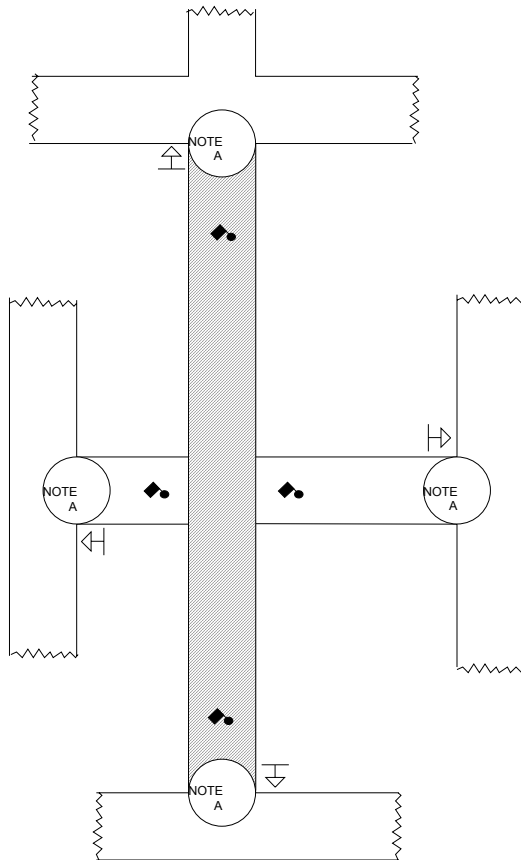



**STANDARD DESIGN**  
**TYPICAL APPLICATION OF TRAFFIC CONTROL DEVICES FOR**  
**HIGHWAY CONSTRUCTION, MAINTENANCE AND UTILITY OPERATIONS**  
**CASE 21**  
**MOVING OPERATIONS DAYTIME ONLY**

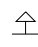


**BARRICADE SYMBOLS**

 Type III

**SYMBOLS**

 Work area

 Sign (bottom of all signs must be at least (5) five feet above roadway surface)

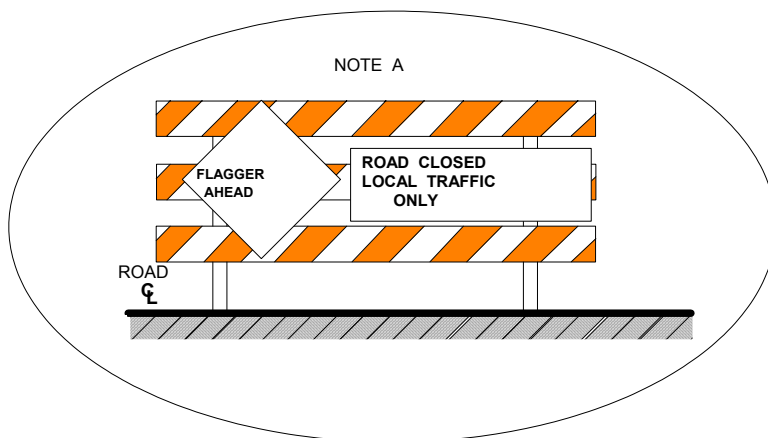
 Flagger station

**TYPICAL APPLICATIONS**

Bituminous Surface Treatment

Gas Leak

Haz. Mat. Spills



## CASE 21

### MOVING OPERATIONS - DAYTIME ONLY

#### General Notes

1. All vehicles, equipment, workers (except flagger) and their activities are restricted at all times to one traffic lane, leaving the opposite lane open to traffic.
2. No bituminous surface treatment operations shall be performed when due to insufficient light or unfavorable atmospheric conditions, persons and vehicles on the highway are not clearly discernible at a distance of 1,000 feet ahead.
3. The flaggers shall be in sight of each other or in communications at all times.
4. Flagger signs shall be displayed not less than 500 feet prior to the flagger station. The maximum distance to be determined by the Traffic Engineer, but in no case to exceed the length of one-half (1/2) days operation or two (2) miles, whichever is less.
5. The minimum distance requirements given in note #4 do not apply when the work operation starts or stops at the junction of a connecting road. In this event signs on the connecting road will be placed in accordance with Case 7-A.
6. Flagger ahead signs will be promptly removed at the cessation of work operations.
7. Drums illustrated in note A will be placed when work operation moves out of intersection and removed when road is opened to traffic in its entirety. Barricades on intersecting and side roads will be placed prior to start of work operations.
8. All vehicles in a work area shall display flashing lights installed for the purpose of warning approaching drivers of a vehicular traffic hazard requiring unusual care in approaching, overtaking, or passing.
9. This is the minimum requirement for the condition set forth. The Traffic Engineer may require additional traffic control devices as deemed necessary.