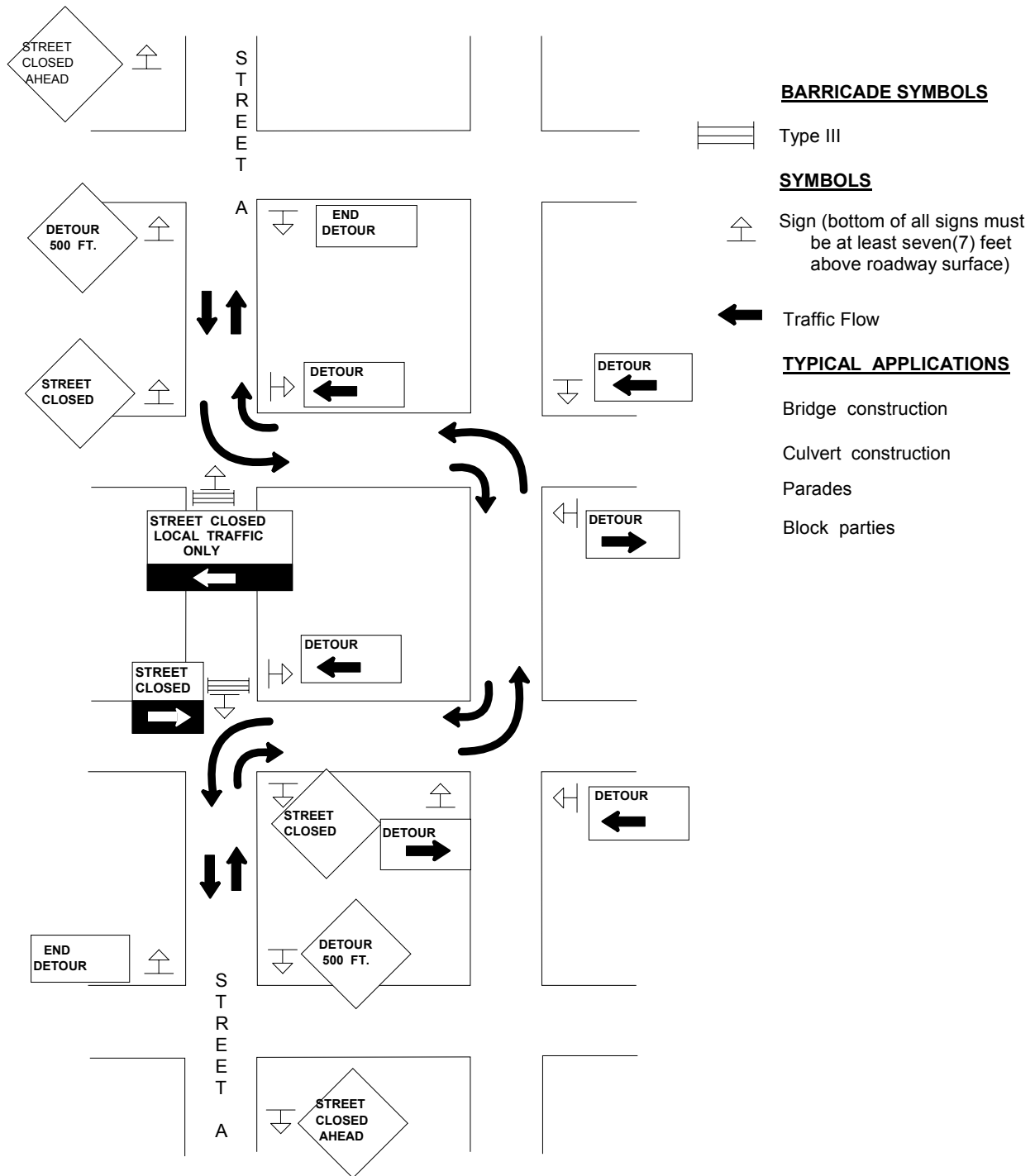


STANDARD DESIGN
TYPICAL APPLICATION OF TRAFFIC CONTROL DEVICES FOR
HIGHWAY CONSTRUCTION, MAINTENANCE AND UTILITY OPERATIONS
CASE 15 - B
TWO-LANE, TWO-WAY, TRAFFIC URBAN DETOUR FOR
DAY OR NIGHT OPERATIONS



CASE 15-B

TWO-LANE, TWO-WAY TRAFFIC URBAN DETOUR FOR DAY OR NIGHT OPERATIONS

Where, at any time, any vehicle, equipment, worker and their activities including parades, block parties, or any other activities that require the closure of a street, and a detour is in effect.

General Notes

1. ONE (1) AMBER, TYPE B flashing warning light shall be installed above each of the first two warning signs in advance of the detour.
2. If Street "A" has a stop condition at the point of closure, the advance warning (STREET CLOSED, DETOUR 500 FT. and STREET CLOSED AHEAD) signs may be omitted.
3. Two (2) RED, TYPE B flashing warning lights shall be installed on top of the Type III barricade that closes the street to all traffic.
4. One (1) AMBER, TYPE B flashing warning lights shall be installed on top of the Drum at the point of detour where local traffic is permitted access to nearer points than the actual closure.
5. All signs shall be post mounted if the closure time exceeds four (4) days, unless otherwise authorized by the Engineer.
6. When a side street intersects the street on which work is being performed, additional traffic control devices shall be erected as directed by the Engineer.
7. Longitudinal dimensions may be adjusted slightly to fit field conditions.
8. All vehicles in a work area shall display flashing lights installed for the purpose of warning approaching drivers of vehicular traffic hazard requiring unusual care in approaching drivers of a vehicular traffic hazard requiring unusual care in approaching, overtaking, or passing.
9. This is the minimum requirement for the condition set forth. The Traffic Engineer may require additional traffic control devices as deemed necessary.