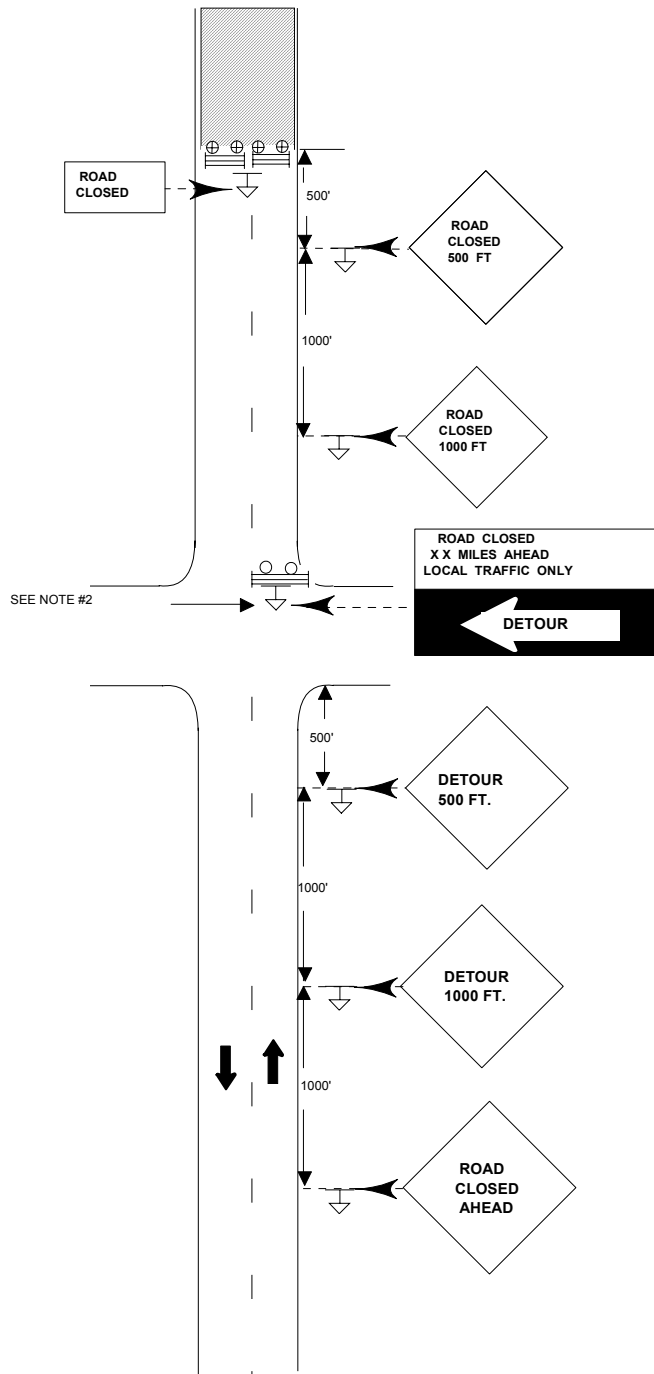


STANDARD DESIGN
TYPICAL APPLICATION OF TRAFFIC CONTROL DEVICES FOR
HIGHWAY CONSTRUCTION, MAINTENANCE AND UTILITY OPERATIONS
CASE 15 - A
TWO-LANE, TWO-WAY TRAFFIC DETOUR FOR DAY OR NIGHT OPERATIONS



BARRICADE SYMBOLS

≡ Type III

SYMBOLS

▨ Work area

⊕ Sign (bottom of all signs must be at least five(5) feet above roadway surface)

← Traffic Flow

LIGHT SYMBOLS

⊙ Type "A" amber flashing light

○ Type "B" amber high-intensity light

⊕ Type "B" red high-intensity light

TYPICAL APPLICATIONS

Bridge construction

Culvert construction

CASE 15-A

TWO-LANE, TWO-WAY TRAFFIC DETOUR FOR DAY OR NIGHT OPERATIONS

Where, at any time, any vehicle, equipment, worker or their activities require the closure of a street or highway and a detour is in effect.

General Notes

1. A minimum of six (6) Amber, Type B, flashing lights shall be used at night. One (1) Amber flashing light shall be installed above the first and second warning sign in advance of the detour. Two (2) Amber flashing lights installed on top of the Type III barricade at the point of detour, and one (1) Amber flashing light shall be installed above each of the two (2) warning signs in advance of the point of closure.
2. If the roadway is signed to stop, two (2) Red, Type B flashing lights shall be installed above the stop sign and two (2) Red, Type B flashing lights shall be installed above the barricade at point of detour. If only the cross street or road is signed to stop, the flashing lights on the barricade shall be Amber and lights on stop sign omitted.
3. The barricades, at the point of closure, shall have two (2) Red, Type B flashing lights over each travel lane.
4. All signs shall be postmounted if the closure time exceeds four (4) days, unless otherwise authorized by the Engineer.
5. When a side road intersects the highway on which work is being performed, additional traffic control devices shall be erected as directed by the Engineer.
6. Longitudinal dimensions may be adjusted slightly to fit field conditions.
7. All vehicles in a work area shall display flashing lights installed for the purpose of warning approaching drivers of a vehicular traffic hazard requiring unusual care in approaching, overtaking, or passing.
8. This is the minimum requirement for the condition set forth. The Traffic Engineer may require additional traffic control devices as deemed necessary.