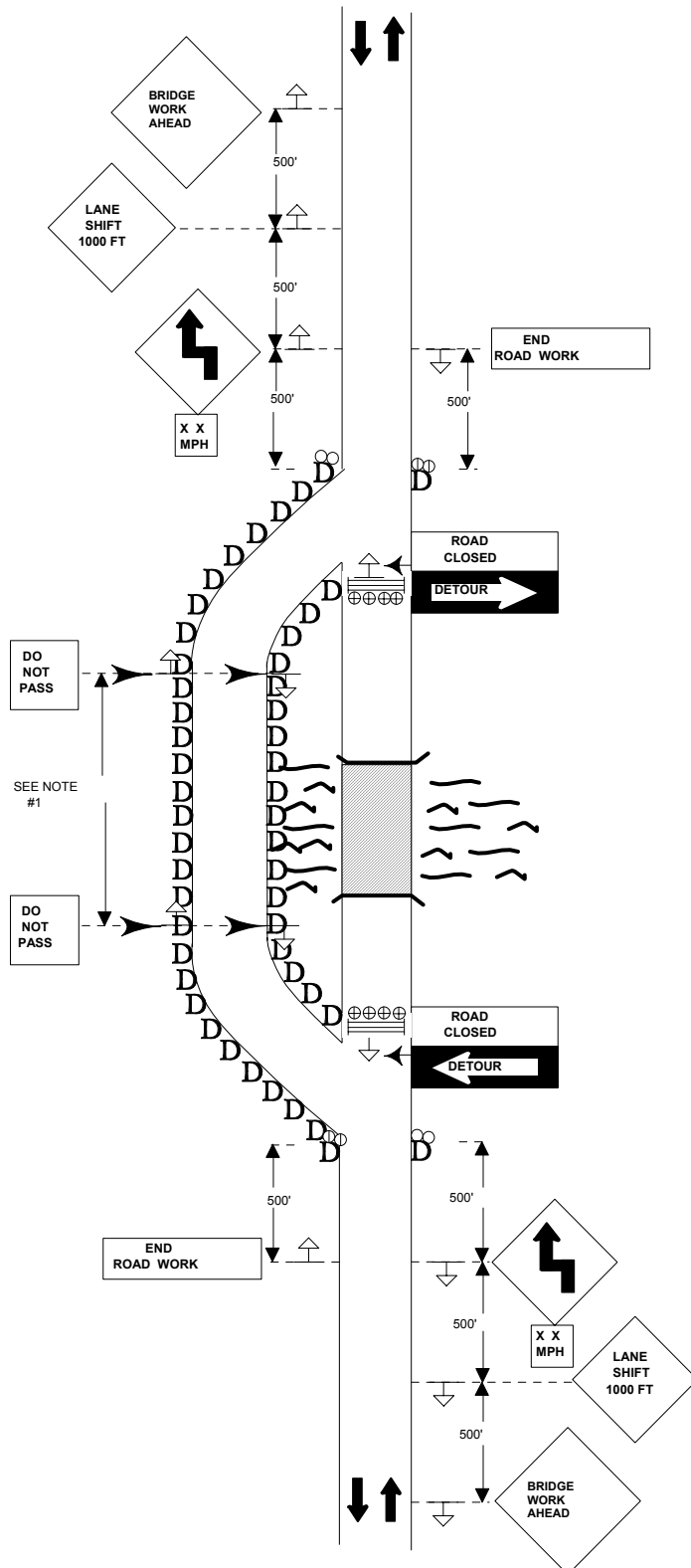


STANDARD DESIGN
TYPICAL APPLICATION OF TRAFFIC CONTROL DEVICES FOR
HIGHWAY CONSTRUCTION, MAINTENANCE AND UTILITY OPERATIONS
CASE 10 - B
TWO-LANE, TWO-WAY TRAFFIC, TEMPORARY DETOUR
DAY OR NIGHT OPERATIONS - LIGHT TRAFFIC



BARRICADE SYMBOLS

≡ Type III

SYMBOLS

D Drums

▨ Work area

⏏ Sign (bottom of all signs must be at least five(5) feet above roadway surface)

← Traffic Flow

LIGHT SYMBOLS

⦿ Type "A" amber flashing light

○ Type "B" amber high-intensity light

⊕ Type "B" red high-intensity light

TYPICAL APPLICATIONS

Bridge construction

Culvert construction

CASE 10-B

TWO-LANE, TWO-WAY TRAFFIC, TEMPORARY DETOUR - DAY OR NIGHT OPERATIONS LIGHT TRAFFIC

Where, at any time, any vehicle, equipment, workers or their activities require the closure of both lanes and a temporary runaround is constructed.

General Notes

1. On the temporary runaround, amber delineators at 25 foot centers on curves that may be increased to 50 foot spacings within the limits of the (T) tangent, shall be used to mark or outline the travelway. NOTE: Drums may be used instead of delineators with a 50 foot spacing on the curves and a 100 foot spacing on the tangent.
2. The advisory safe speed to be shown below the warning signs shall be determined at the site and approved by the Traffic Engineer.
3. All signs shall be post mounted if the closure time exceeds four (4) days, unless otherwise authorized by the Traffic Engineer.
4. A minimum of two (2) AMBER, TYPE B, high-intensity flashing warning lights shall be used at night in advance of the work area. One amber flashing light shall be installed above each of the first two (2) advance warning signs in the series.
5. Longitudinal dimensions may be adjusted slightly to fit field conditions.
6. When a side road intersects the highway on which work is being performed, additional traffic control devices shall be erected as directed by the Traffic Engineer.
7. All vehicles in a work area shall display flashing lights installed for the purpose of warning approaching drivers of a vehicular traffic hazard requiring unusual care in approaching, overtaking, or passing.
8. This is the minimum requirement for the condition set forth. The Traffic Engineer may require additional traffic control devices as deemed necessary.