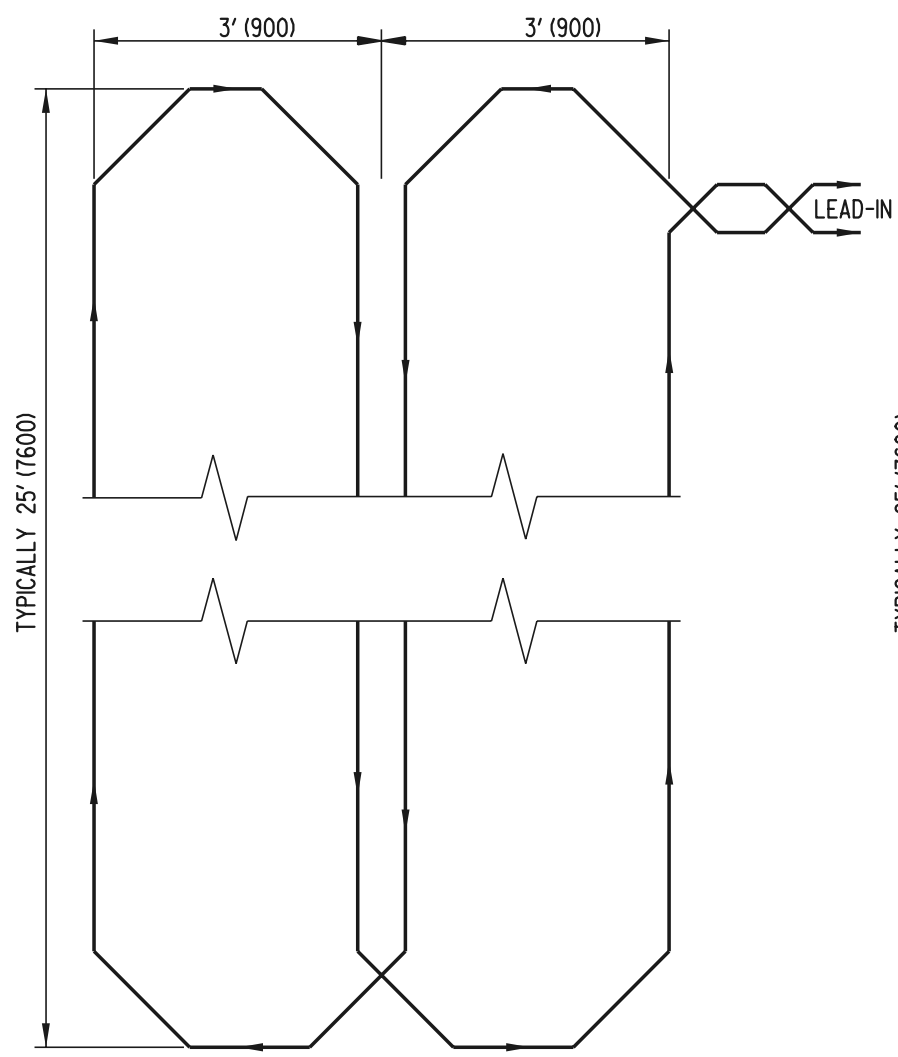
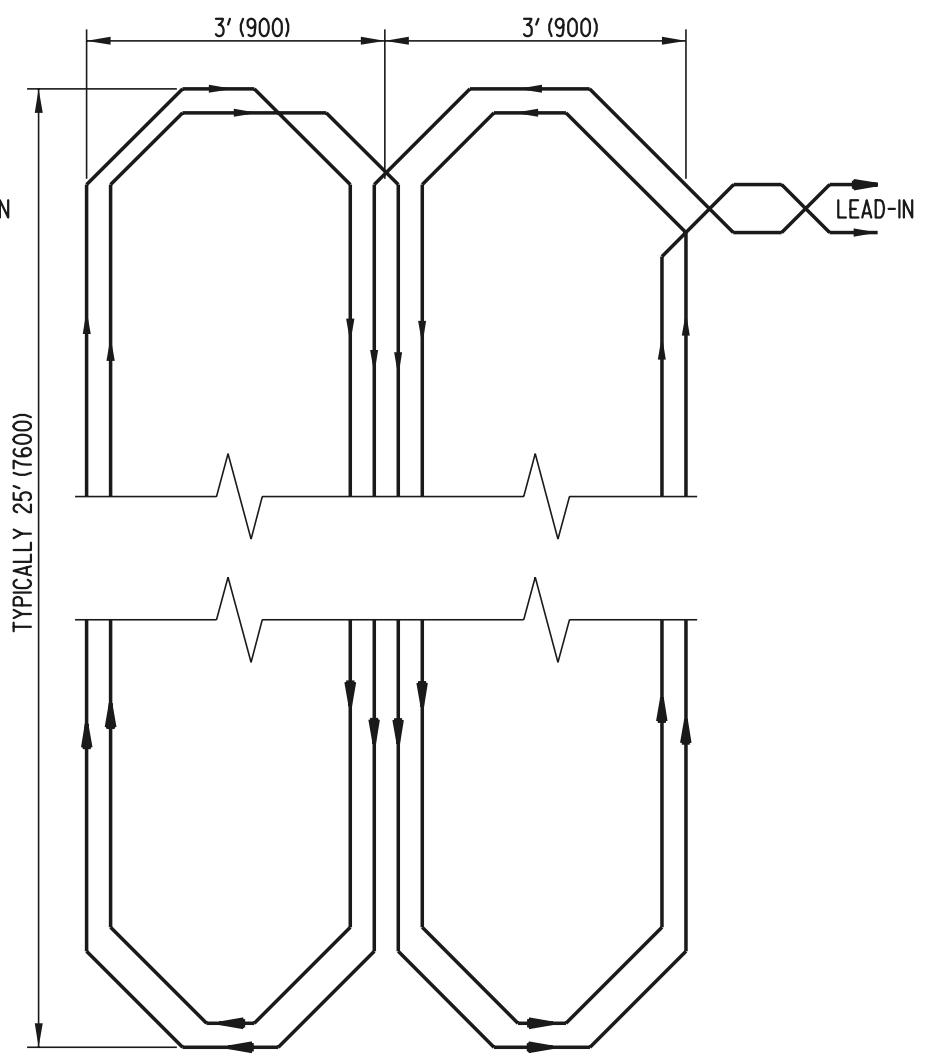


WIRE SLOT CONSTRUCTION



**SINGLE WRAP
(CONOGA WIRE)**



**TRIPLE WRAP
(#14 WIRE)**

DETAILS FOR INSTALLING DETECTOR CABLE

NOTES: 1). SAW CUTS FOR WIRE SLOT CONSTRUCTION SHALL BE EXTENDED BEYOND THE CORNERS SO THAT THE SLOT IS FULL DEPTH AT TURN POINTS. A FORTY-FIVE (45) DEGREE ANGLE SHALL BE CUT 12" (300) BACK FROM THE POINT OF THE EXTENDED CORNER.

PLAN SYMBOL

