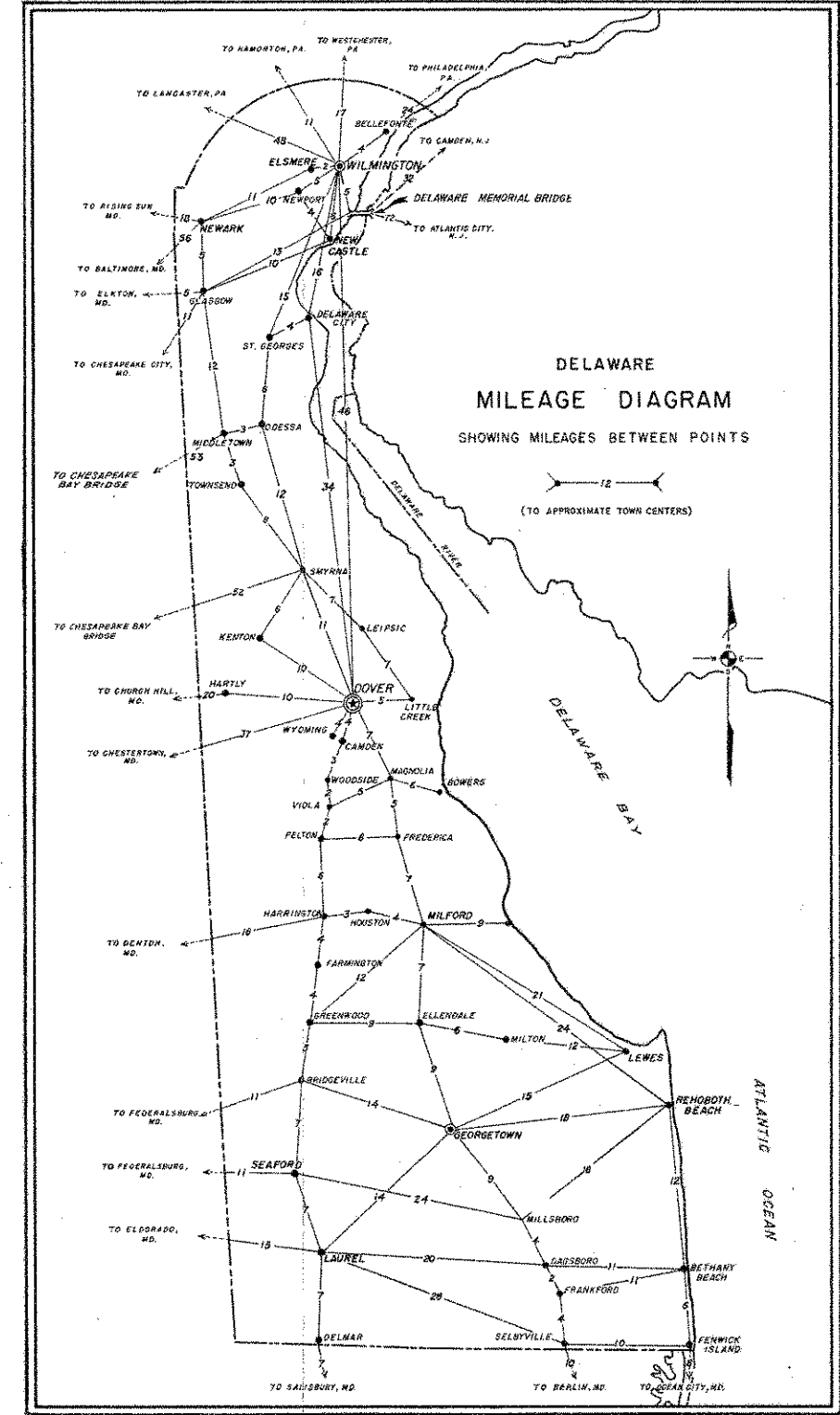
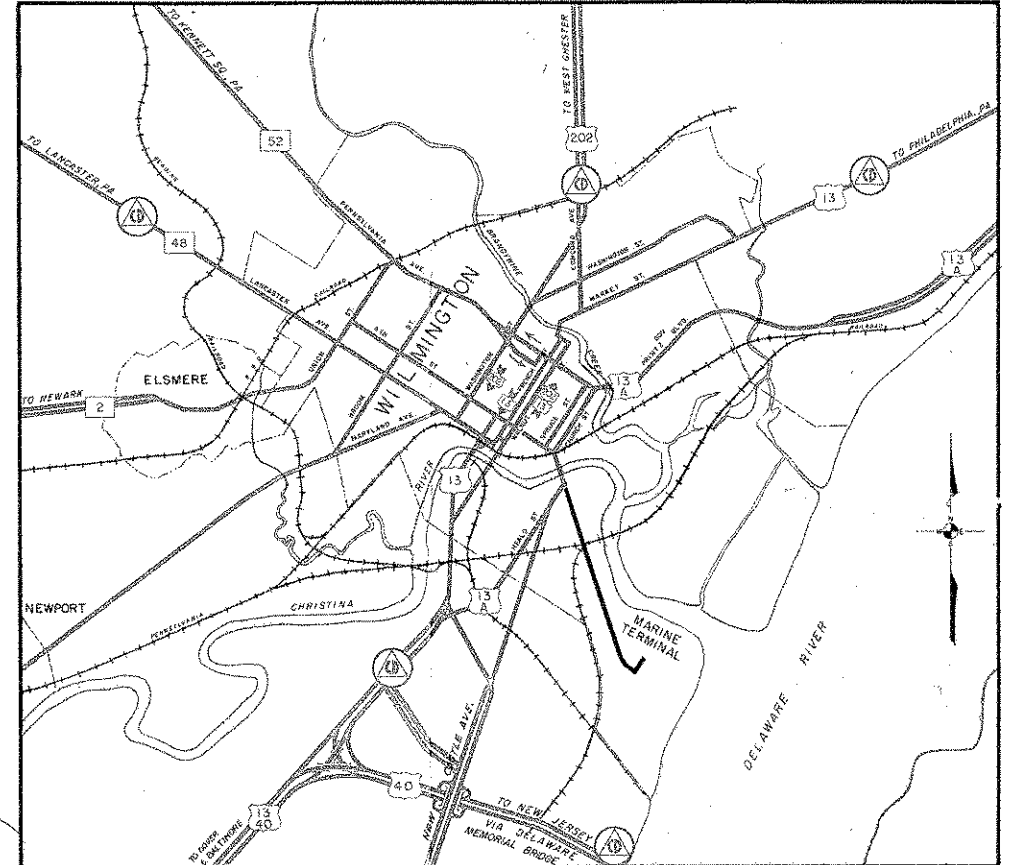
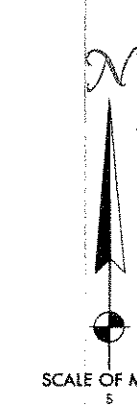


1957-1958
OFFICIAL HIGHWAY MAP
OF
DELAWARE

STATE HIGHWAY DEPARTMENT
 DOVER, DELAWARE

LEGEND

- | | | | |
|-----------------------------|-----------|-----------------------------|-----------|
| State Boundary | — — — — — | Road Types: | |
| County Boundary | — — — — — | Unimproved | — — — — — |
| Primary Highways | — — — — — | Graded and Drained Earth | — — — — — |
| Divided | — — — — — | Soil Surfaced | — — — — — |
| Undivided | — — — — — | Gravel or Stone | — — — — — |
| Other Roads | — — — — — | Low Type Bituminous | — — — — — |
| U. S. Numbered Highways | — — — — — | Paved | — — — — — |
| State Numbered Highways | — — — — — | Civil Defense Highways | — — — — — |
| State Capital | ⊙ | Free Ferry | FF |
| County Seat; Other Places | ⊙ | Forests and Reservations | — — — — — |
| Incorporated Towns | ⊙ | Railroads | — — — — — |
| Roadside Picnic Area | ▲ | Delaware Memorial Bridge | — — — — — |
| Airports and Landing Fields | ✈ | 25000 Foot Grid Delaware | — — — — — |
| | | Coordinate System | — — — — — |
| | | Public Boat Launching Sites | — — — — — |



Delaware is centrally and strategically located on the Atlantic seaboard. Within overnight traveling distance more than 50,000,000 people may be served with its products. Air, rail, water and modern highway transportation facilities provide prompt service between points in Delaware and the principal cities of the East and South. This central location, close to raw materials, makes Delaware the Delaware State Development Department, Dover.

When you contemplate a new plant site or if you are planning an expansion program, you will do well to locate in Delaware for industrial opportunities and information. Delaware State Development Department, Dover.



FOR FREE DISTRIBUTION ONLY

HON. J. CALTEB BOGGS, GOVERNOR

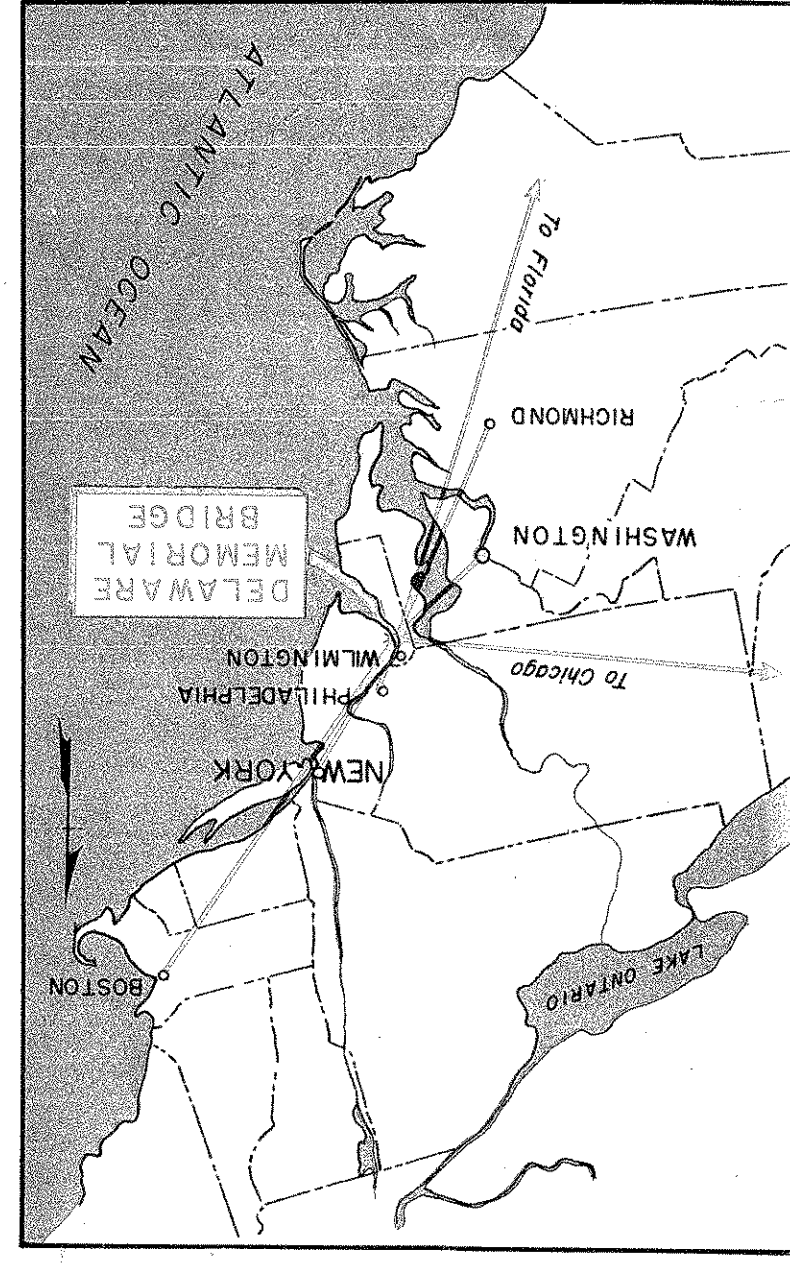
STATE HIGHWAY DEPARTMENT

1957-58

DELaware

MAP OFFICIAL HIGHWAY

J. GORSON SMITH, Chairman
 BENJAMIN ASKEMAN
 THOMAS G. ADAMS
 DR. J. BRADY BROWN
 DAVID B. CHASE
 SAMUEL J. FOX
 FRANK R. GREER
 EDWARD KELLY
 WILLIAM F. RICHMONSON
 HUGH R. SHAW, Jr.
 BENJAMIN F. SHAW, II
 ROBERT D. THOMPSON
 RICHARD A. HAYES, Chief Engineer
 JAMES J. DEWITT, Secretary



"NO PASSING ZONES"

HILLS: DASHES CENTER LINE, SOLID LINE NO PASSING

CURVES: DASHES CENTER LINE, SOLID LINE NO PASSING

NO CROSSING DOUBLE CENTER LINE

FOUR LANE HIGHWAY

Delaware's No Passing zones are marked on the pavement with white lines and are strictly enforced. The rule is simple. A white line on your side of the center line means that you must not overtake or pass a vehicle or drive to the left half of the roadway until the white line on your side ends. Frequently, there is a white line on both sides which means that passing is prohibited from either direction.

DELAWARE STATE POLICE

LOCATION	TELEPHONE NUMBER
Troop 1 — U.S. 13 North of Wilmington	OL 2-8211
Troop 2 — U.S. 13 South of Wilmington	OL 4-2436
Troop 3 — U.S. 13 North of Dover	Dover 5756
Troop 4 — U.S. 113 North of Georgetown	Georgetown 2534
Troop 5 — U.S. 13 North of Bridgeville	Bridgeville 600
Headquarters — U.S. 13 South of Wilmington	EA 8-7504

WATCH FOR THESE SIGNS

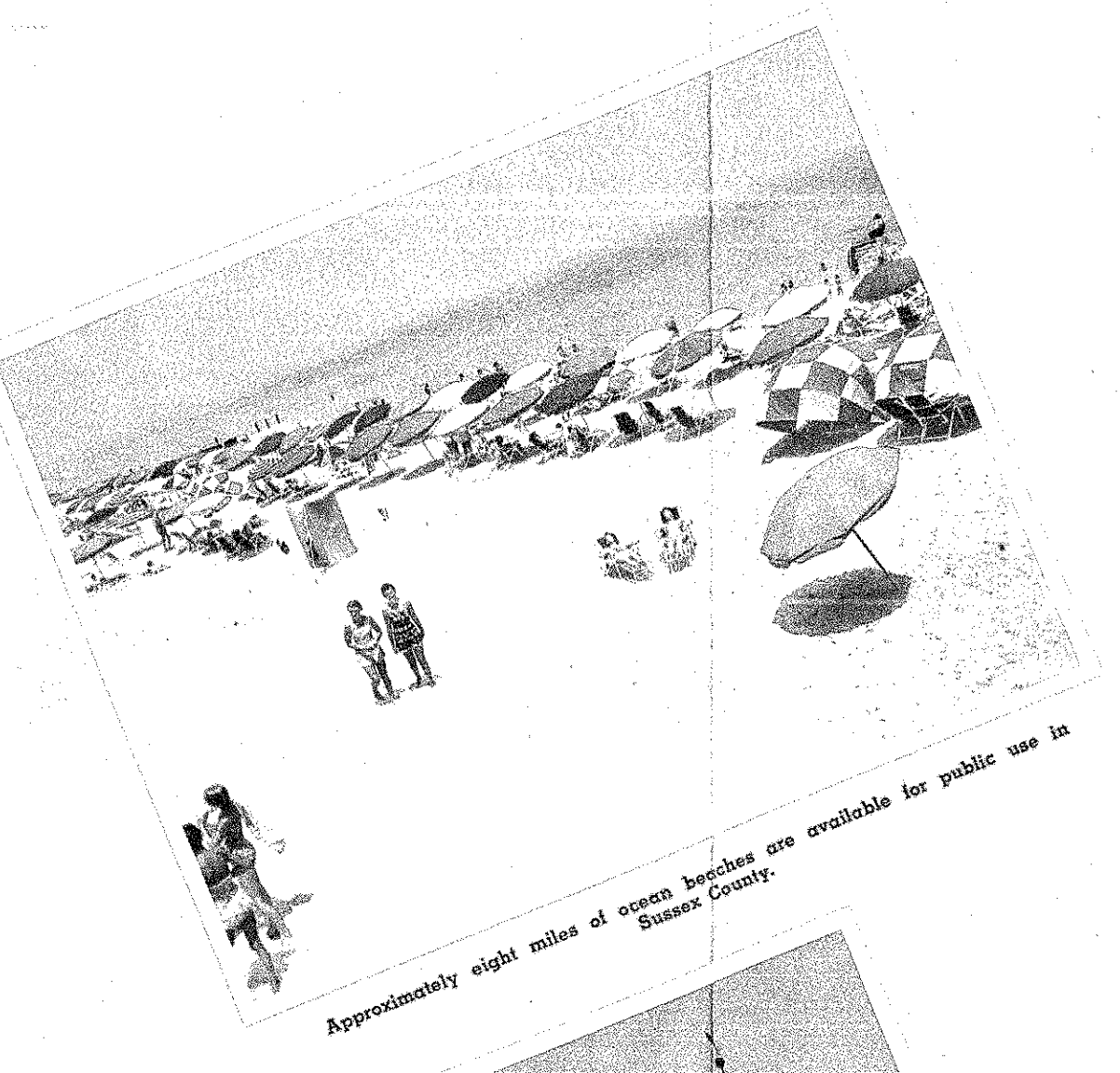
Roadside PICNIC AREA

TRASH CAN 1000 FT.

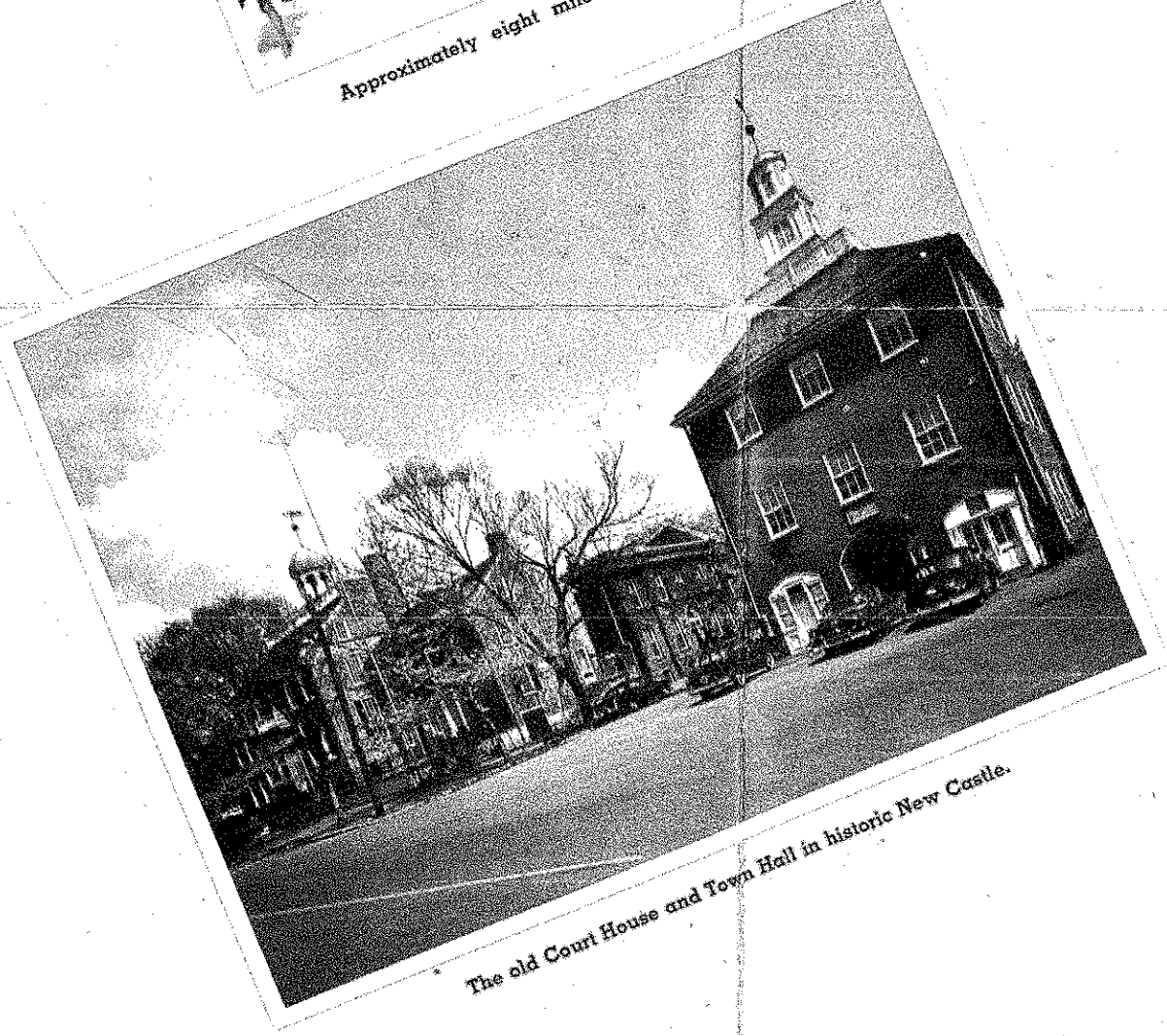
Roadside picnic areas with tables under shade trees are maintained for your enjoyment. This sign will point out these areas for you.

Refuse cans are placed at intervals along Delaware Highways. "Help Keep Delaware Clean" by depositing trash in these cans.

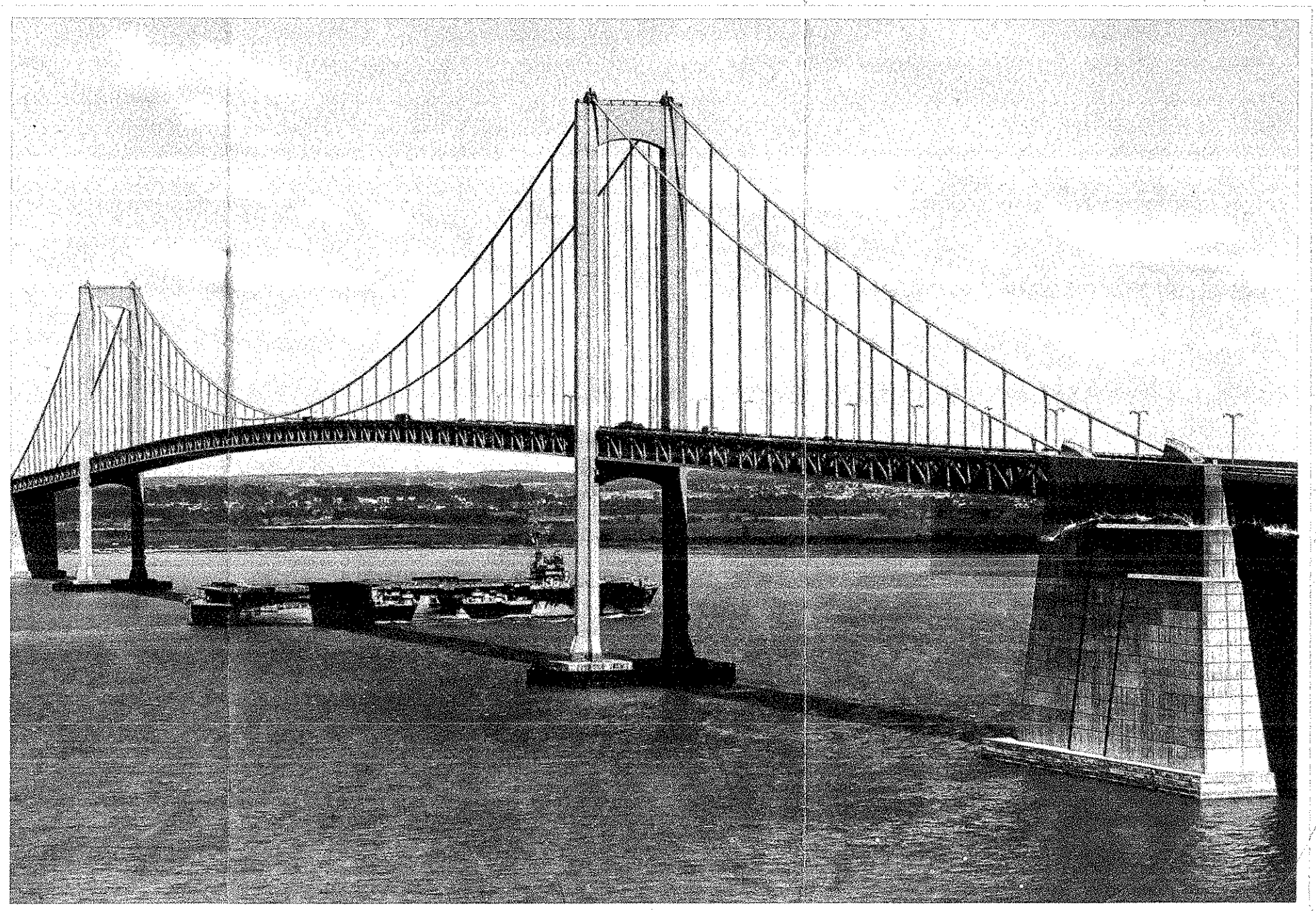
"SLOW DOWN AND LIVE"



Approximately eight miles of ocean beaches are available for public use in Sussex County.



The old Court House and Town Hall in Historic New Castle.



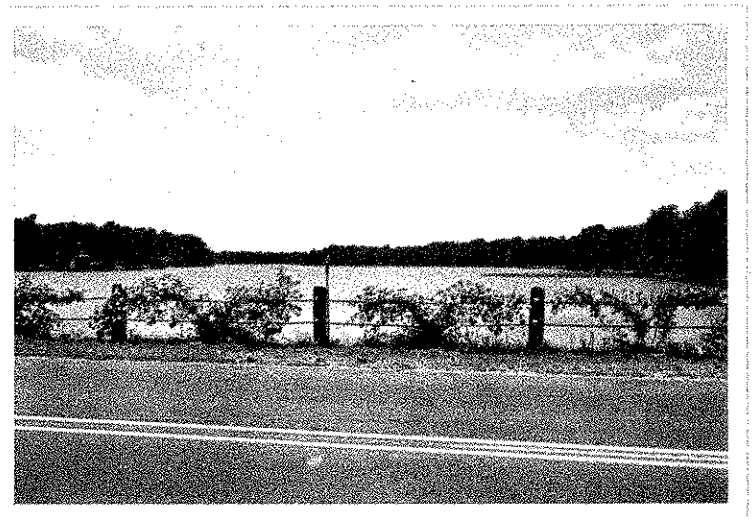
The Delaware Memorial Bridge, a vital link across the Delaware River, South of Wilmington. During 1955 over 8,000,000 vehicles crossed this four laned, 2 mile long, suspension bridge.

Things are happening in progressive, industrial and agricultural Delaware, "The Blue Hen State"—first to ratify the Federal Constitution in 1787. Fastest growing state east of the Mississippi River; fifth fastest growing in the nation—more and more businesses, industries and people call Delaware "home." Delightful, diversified—and one of the thirteen original colonies—the state attracts thousands of visitors annually to its priceless historic and cultural institutions.

Surrounded east and north by Delaware Bay and the Atlantic Ocean, Delaware has its own summer playgrounds with excellent fishing and water sports. State Parks and roadside rests offer the traveler recreational interludes and fun.

Fine state highways, motels, hotels and restaurants dot the state. Fine fruits and vegetables in season and "Delmarvalious" chicken are available at well-kept roadside stands.

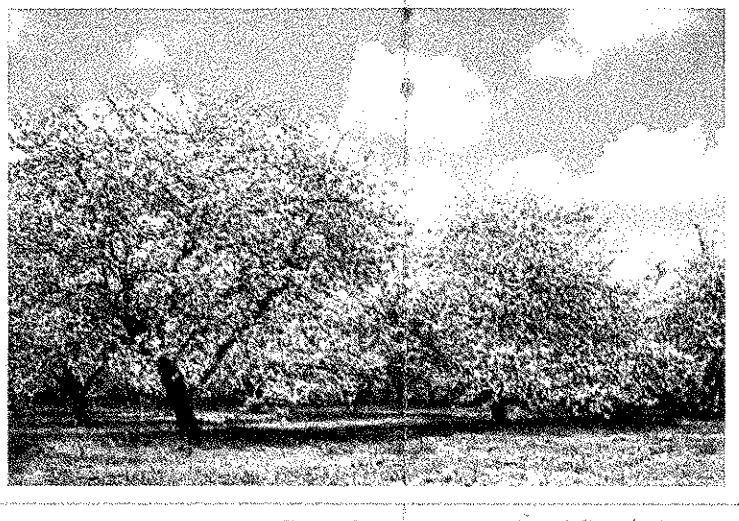
Come see us soon—stay awhile—or become a permanent resident of "Delaware"—the state that grows naturally.



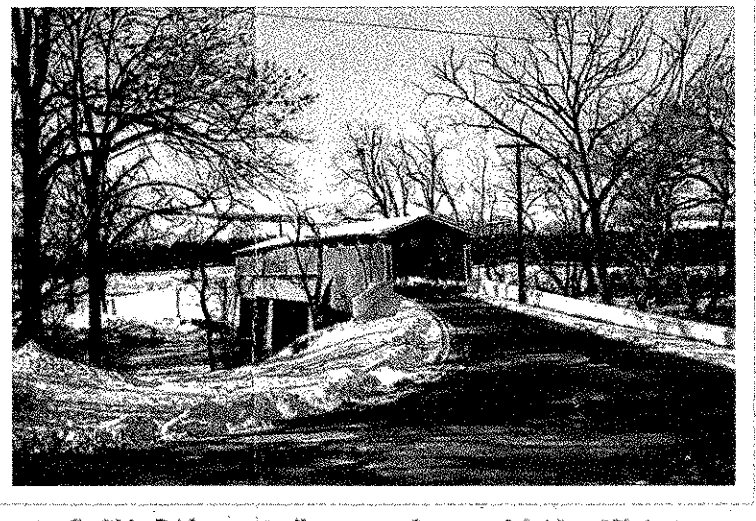
Well stocked fresh water lakes, readily accessible by modern highways, abound in Delaware.



Tomatoes, an important crop, are grown and processed in Delaware.



Apple blossoms in Kent County, a promise of fine fruit to follow.



Smith's Bridge, a well preserved covered bridge 188 feet long, is located in Northern Delaware.