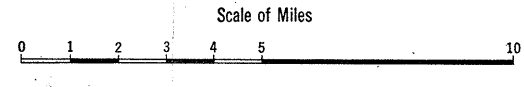


STATE OF  
DELAWARE

State Highway Department  
Dover, Delaware

OFFICIAL ROAD MAP  
1932

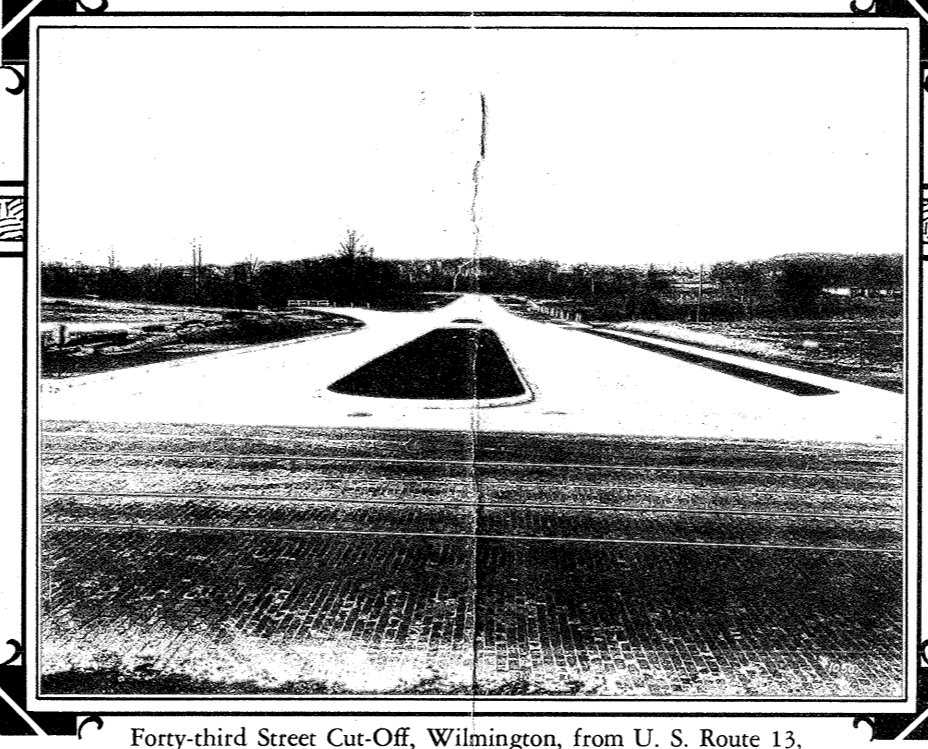


- LEGEND**
- Delaware State Highways completed
  - - - Delaware State Highways under construction
  - Delaware State Highways silt and gravel
  - Improved County Roads
  - Other Roads
  - ① U.S. Highway Numbers
  - ② State Highway Numbers
- Main through routes are shown in heavy lines
- Approximate Population of Cities and Towns (1930)
- |                     |                   |
|---------------------|-------------------|
| ⊙ Over 100,000      | ⊙ 5,000 to 10,000 |
| ⊙ 50,000 to 100,000 | ⊙ 2,500 to 5,000  |
| ⊙ 25,000 to 50,000  | ⊙ 1,000 to 2,500  |
| ⊙ 10,000 to 25,000  | ⊙ Under 1,000     |

Dover: Laid out by order of Wm. Penn, 1717  
State House built 1722  
Became Capital 1777  
First Delaware Regiment Mustered in Revolution  
Presbyterian Church 1714  
Christ Church 1784

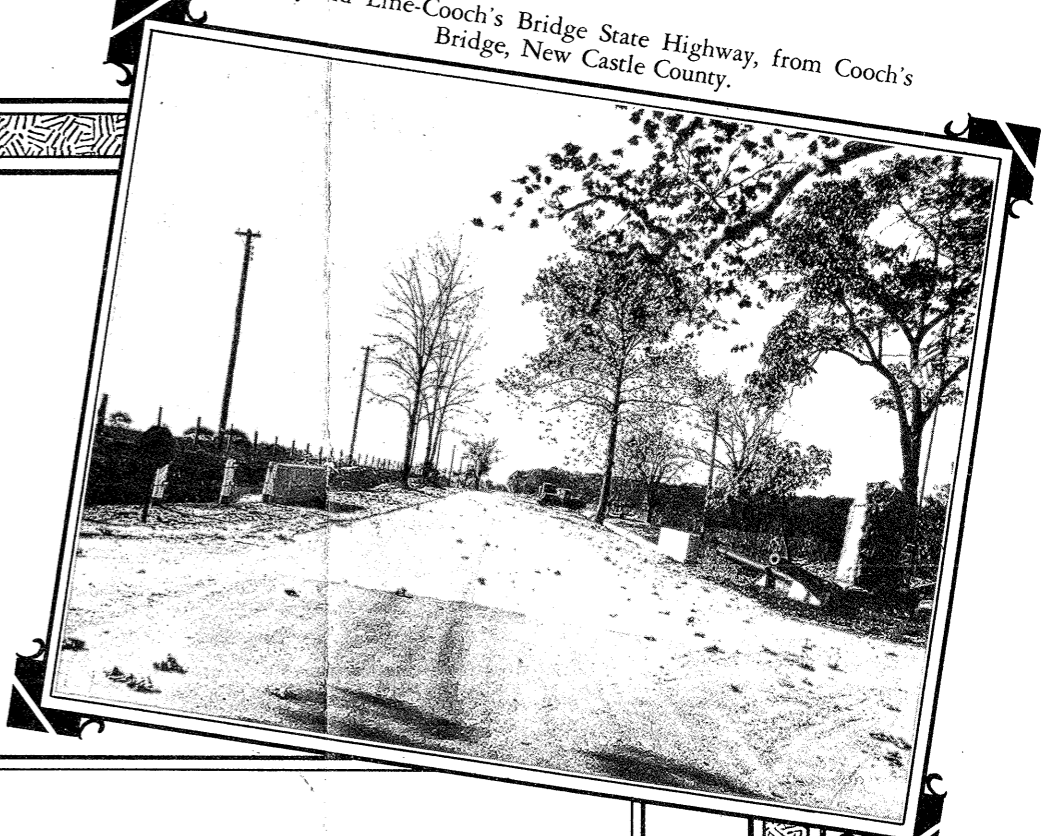


Bridge over Red Clay Creek, Wilmington-Newark State Highway at Marshallton, New Castle County.

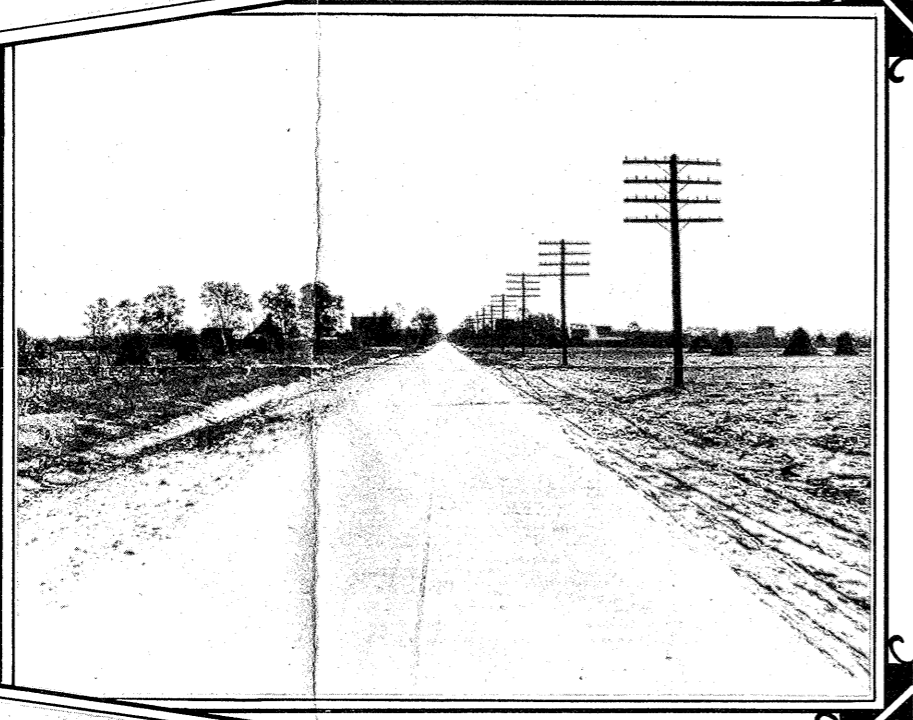


Forty-third Street Cut-Off, Wilmington, from U. S. Route 13, New Castle County.

Maryland Line-Cooch's Bridge State Highway, from Cooch's Bridge, New Castle County.

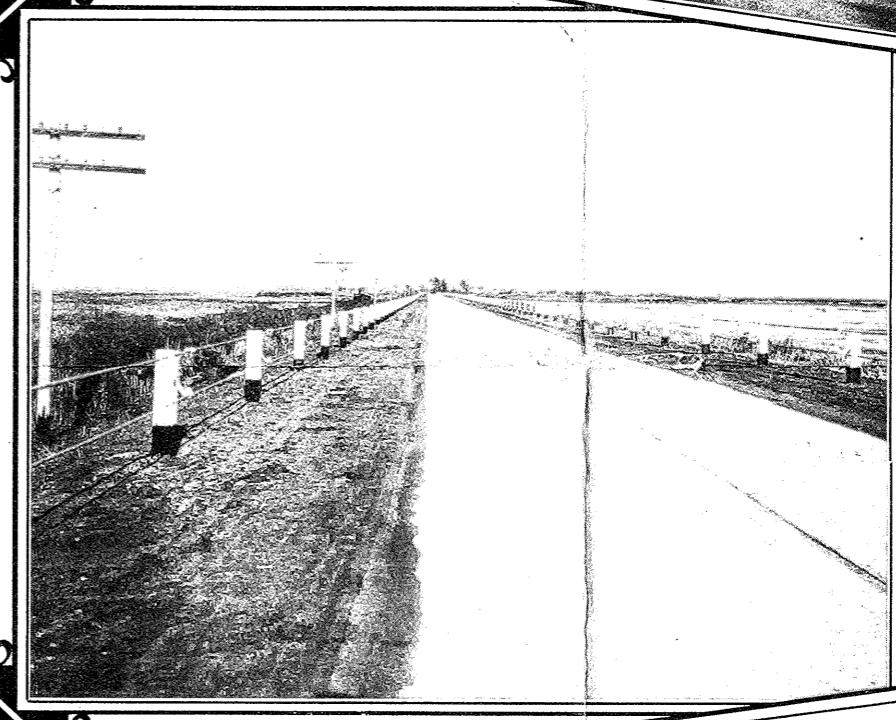


Laurel-Independence School, State Highway, Sussex County.

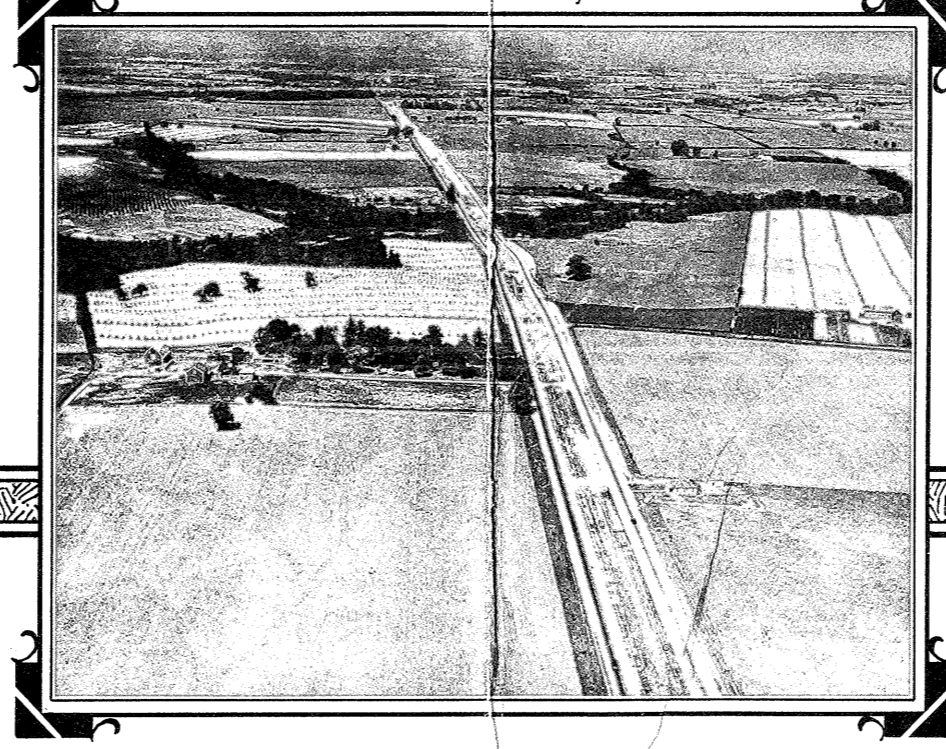


**DELAWARE**

Port Penn-Delaware City State Highway, Near Delaware City, New Castle County.



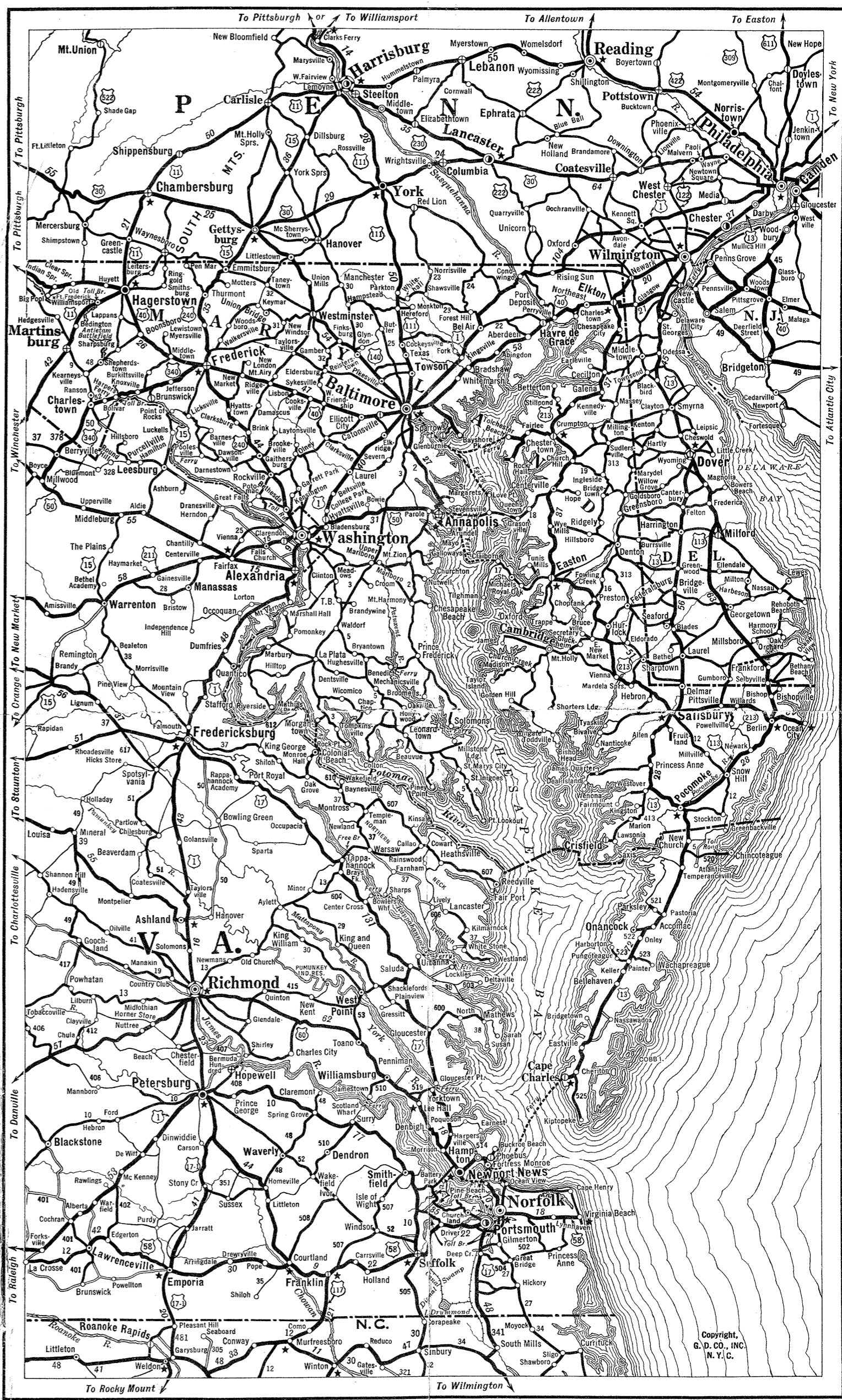
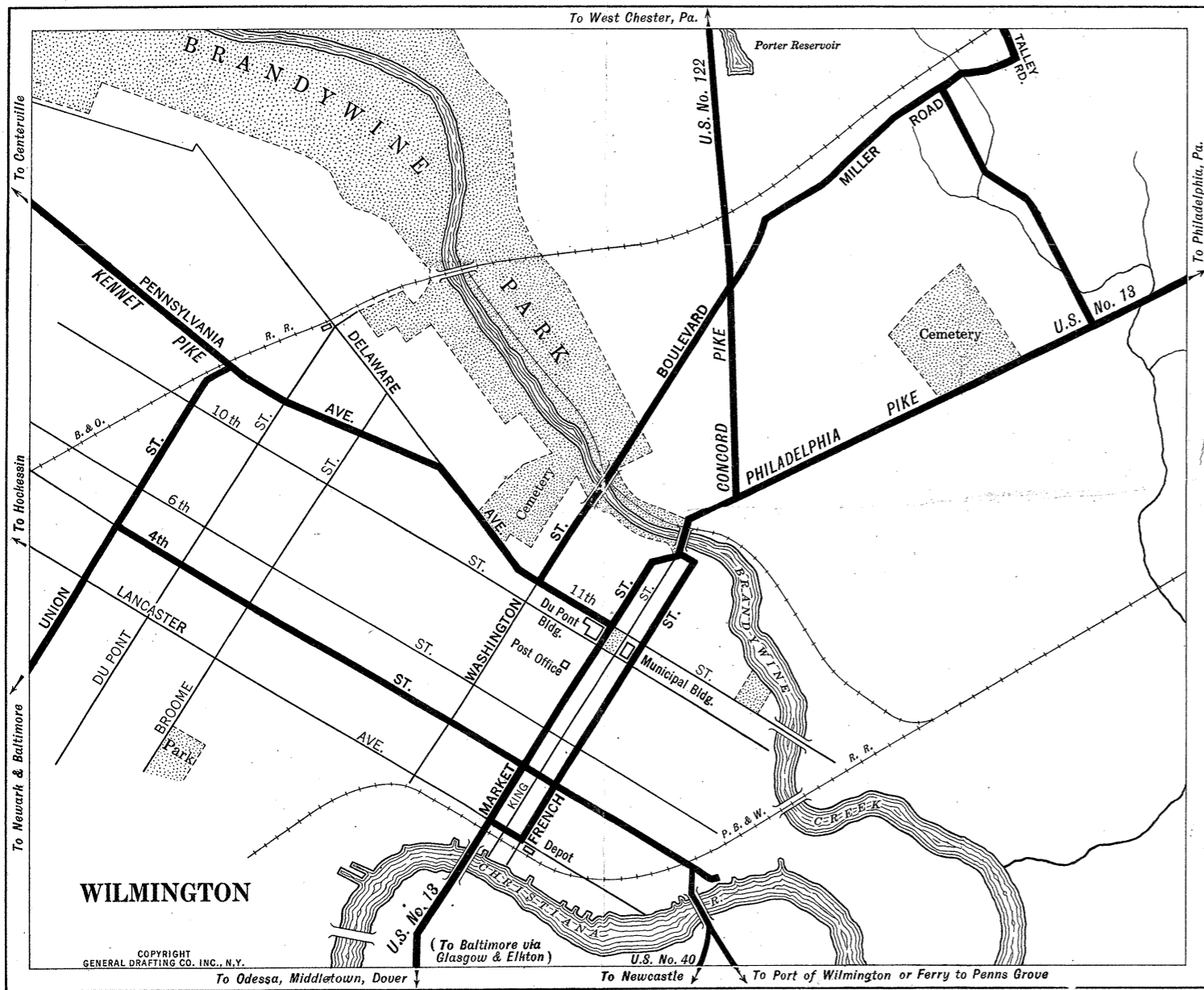
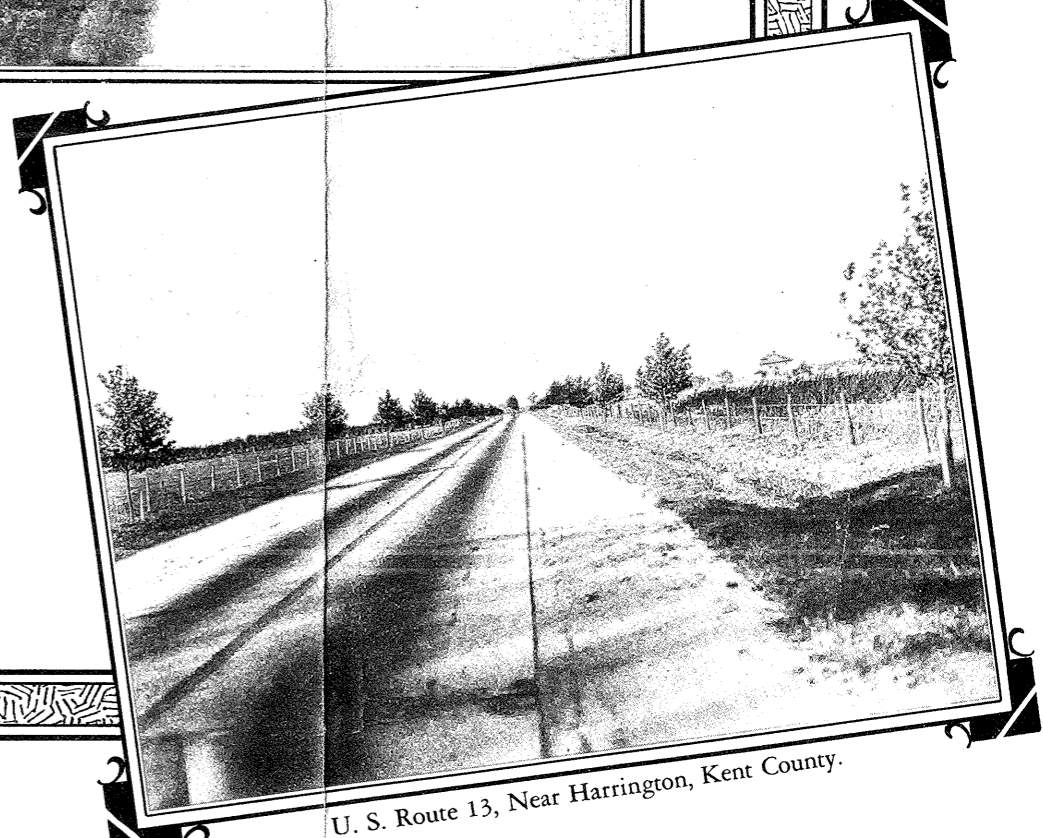
St. Georges-State Road Dual Highway, U. S. Route 13, New Castle County.



State Highway from Hartly to Sudlersville Road, Kent County.



U. S. Route 13, Near Harrington, Kent County.



**RULES OF THE ROAD**

- The State Highway Department will appreciate the cooperation of motorists in observing the following regulations:
1. Be careful and courteous.
  2. On Four lane highways, keep to the right and do not cross white line.
  3. Do not stop or park on paved portion of highway.
  4. Come to Full Stop before entering Main highways.
  5. Use extreme care in overtaking and passing other vehicles.
  6. Never pass a vehicle, going in the same direction on a hill, curve or at a road intersection.
  7. Do not pass to the right when overtaking another vehicle.
  8. Remember that wet roads are slippery—reduce speed accordingly.
  9. Give hand signals when changing speed or direction.
  10. Keep pace with the majority of traffic on heavily traveled highways. If autos are jamming up behind you or you are continually being passed, you are going too slow, speed up.

Motorists requiring Police Service should report to nearest State Highway Police Station.

- Station No. 1 Penny Hill 'Phone Holly Oak 34
- Station No. 2 State Road 'Phone Wilmington 4041
- Station No. 3 Dover 'Phone Dover 34
- Station No. 4 Georgetown 'Phone Georgetown 34
- Station No. 5 Bridgeville 'Phone Bridgeville 31

**MAP OF THE STATE OF DELAWARE**



**OFFICIAL ROAD MAP**

1932

State Highway Department

- F. V. du Pont, Chairman Wilmington
- C. Douglass Buck Wilmington
- Newton L. Grubb Grubbs Corner
- Charles W. Cullen Georgetown
- J. Henry Hazel Dover

W. W. Mack, Chief Engineer  
Allen Craig, Secretary